



SOLANO
COMMUNITY COLLEGE



Solano Community College Measure Q Quarterly Progress Update

June 15, 2022

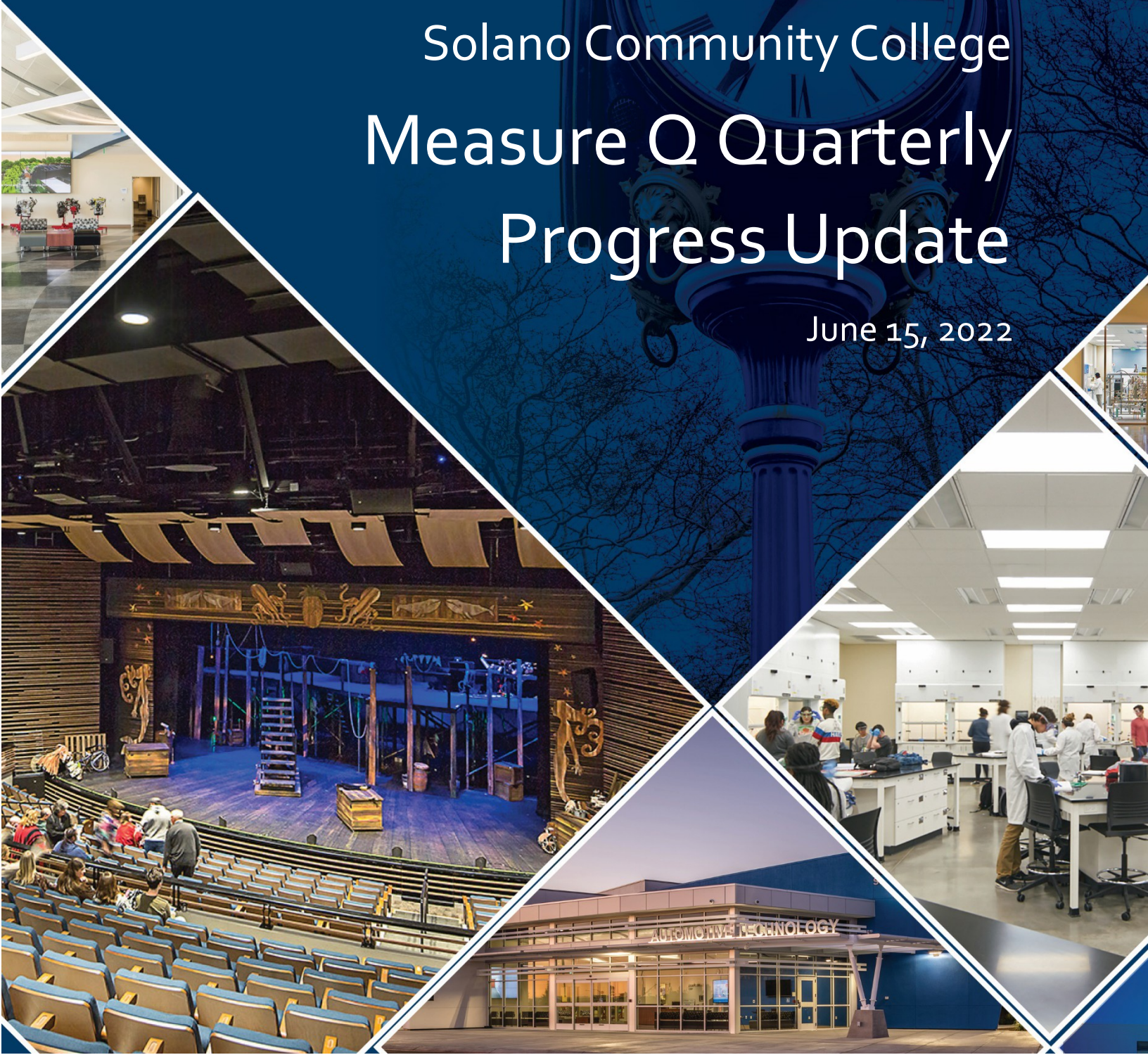


TABLE OF CONTENTS

1. GENERAL INFORMATION	
A. Executive Summary	2
B. Project Team.....	3
2. PROGRAM SUMMARY	
A. Current Activities	5
B. Next 90 Days.....	10
C. Issues.....	11
3. FAIRFIELD CAMPUS SUMMARY	
A. Current Activities	12
B. Next 90 Days.....	12
C. Issues.....	13
4. VACAVILLE CAMPUS SUMMARY	
A. Current Activities	14
B. Next 90 Days.....	14
C. Issues.....	14
5. VALLEJO CAMPUS SUMMARY	
A. Current Activities	15
B. Next 90 Days.....	15
C. Issues.....	15
6. DISTRICTWIDE PROJECTS SUMMARY	
A. Current Activities	16
B. Next 90 Days.....	16
C. Issues.....	16
7. FINANCIAL SUMMARY	
A. Budget Update	17
B. Reserve Status.....	17
C. Contract Status	17
D. Payment Status.....	17
8. PROGRAM BUDGET SUMMARY	
A. Program Budget Summary	18
9. SCHEDULE FOR MAJOR ACTIVE BUILDING PROJECTS	
A. Schedule for Major Active Building Projects.....	19
10. PROJECT REPORTS	
A. Individual Project Reports – Active	20
B. Individual Project Reports – In Close-Out.....	20
C. Individual Project Reports – Closed.....	20

1. GENERAL INFORMATION

A. EXECUTIVE SUMMARY

Measure Q, approved by the voters in 2012, authorized general obligation bonds in the amount of \$348,000,000 for acquiring, constructing and repairing facilities, sites and equipment in order to prepare Solano County and City of Winter's students and veterans for universities and jobs.

This Solano CCD Measure Q Quarterly Progress Update report is produced for the District and made available to the Board of Trustees, the Citizens Bond Oversight Committee (CBOC), and interested parties. This report describes program and project progress and expenditures from January 1, 2022 through March 31, 2022.

In this report, you will find the following sections:

- **Program Summary** of current activities, 90-day look ahead and notes about any issues.
- **Campus Summaries** for Fairfield, Vacaville and Vallejo campuses. These sections highlight the current activities, 90-day look ahead and any issues.
- **Financial Summary** section, which summarizes the expenditures to date and variance from the last report.
- **Program Budget Summary**, based on the Board-approved Bond Spending Plan as of November 17, 2021, organized by program, campus and project. It includes a total of all expenditures as of March 31, 2022.
- **Schedule for Major Active Building Projects.**
- **Project Reports** section with more detailed information for individual projects, organized as "active", "in close-out", or "closed."

Brief monthly project updates may be found on the District's website, www.solano.edu. Click on Bonds Program. Click on Active Project Status & Updates.

B. PROJECT TEAM

OWNER – SOLANO COMMUNITY COLLEGE DISTRICT:

There are many staff and faculty members of the Solano Community College District who contribute to the success of the Measure Q Bond Program. Following are some of the key staff who actively participate in delivery of the overall program and its projects.

- James “Kimo” Calilan, Director of Technology Services and Support
- Celia Esposito-Noy, Ed.D., Superintendent-President
- Lucky Lofton, Executive Bonds Manager
- Jim Petromilli, Interim Chief Technology Officer
- Laura Scott, Bond Purchasing Agent
- Susan Wheet, Vice President Finance and Administration
- Jason Yi, Project Manager

PROGRAM & DESIGN MANAGER:

- Kitchell CEM

CONSTRUCTION MANAGERS:

- Swinerton Management and Consulting Services

DISTRICT CONSULTANTS CURRENTLY ACTIVE:

- **District Project Labor Agreement Coordination Consultant:** Vlaming and Associates
- **District Construction Counsel:** Dannis Woliver Kelley (DWK)

PROJECT-SPECIFIC ARCHITECTS and ENGINEERS CURRENTLY ACTIVE:

- **Library/Learning Resource Center (FF Campus):** First Carbon Solutions (Environmental), Ninyo & Moore (Geotechnical), Noll & Tam Architects, Optima Inspections (Inspector), PMP Environmental, 3QC, Inc.
- **Early Learning Center Expansion:** HMR Architects
- **Fairfield Campus Central Plant and Electrification Study:** Salas O’Brien
- **On-Campus Housing Project:** The Scion Group
- **Aeronautics - Nut Tree Facility Improvements (VV Campus):** CSW/ST2
- **Vacaville Center Annex Building Corbels Removal Project Phase 2 (VV Campus):** CA Architects
- **Solar Energy Project:** Optony
- **Small Capital Projects:** Aedis Architects, Consolidated Engineering Laboratories, CSW/ST2, HMR Architects, Optima Inspections, Salas O’Brien
- **ADA Improvements Project:** Sally Swanson Architects

BOARD APPROVED CONSULTANT POOLS

DISTRICT POOL OF ENVIRONMENTAL CONSULTANTS:

- Dudek
- First Carbon Solutions
- Rincon Consultants, Inc.

DISTRICT POOL OF CIVIL ENGINEERING CONSULTANTS:

- Coffman Engineers
- Complete Project Solutions, Inc.
- Creegan + D'Angelo
- CSW/ST2

DISTRICT POOL OF ARCHITECTS:

- Aedis Architects
- CA Architects
- DLR Group/Kwan Henmi
- Dreyfuss + Blackford Architecture
- HGA
- HMR Architects
- JK Architecture Engineering
- Lionakis
- MADI Group, Inc.
- Noll & Tam Architects
- Smith Group
- tBP Architecture, Inc.

DISTRICT POOL OF CM SERVICES FIRMS:

- Cordoba Corporation
- Cumming
- JGM+CBMG
- Kitchell CEM
- Swinerton Management & Consulting
- Vanir

DISTRICT POOL OF GEOTECHNICAL SERVICES FIRMS:

- A3GEO, Inc.
- Ninyo & Moore
- Wallace Kuhl & Associates

DISTRICT POOL OF MEP (MECHANICAL-ELECTRICAL-PLUMBING) SERVICES FIRMS:

- IMEG Corp.
- Salas O'Brien

DISTRICT POOL OF MATERIAL TESTING AND SPECIAL INSPECTIONS SERVICES FIRMS:

- Apex Testing Laboratories
- Applied Materials & Engineering, Inc.
- Consolidated Engineering Laboratories
- Construction Testing Services, Inc.
- Geocon Consultants, Inc.
- Ninyo & Moore
- Terraco
- Wallace Kuhl & Associates

DISTRICT POOL OF DSA INSPECTOR SERVICES FIRMS:

- Optima Inspections Incorporated
- K & B Construction Services, Inc.
- TYR, Inc.

DISTRICT POOL OF COMMISSIONING SERVICES FIRMS:

- 3QC, Inc.
- Engineering Economics, Inc.
- Enovity, Inc.
- GLUMAC
- Guttman & Blaevoet
- Interface Engineering, Inc.

DISTRICT POOL OF ENERGY CONSULTING SERVICES FIRMS:

- Aedis Architects
- ARC Alternatives
- Optony Inc.
- Sage Energy Consulting, Inc.

Please note that the Measure Q Bond Program has had a Board-approved Small, Local and Diverse Business Enterprises (SLDBE) Program since 2015. This Program ensures inclusion of Solano County businesses in contracting and supplier opportunities generated by the Measure Q Bond Program. This Program collects and reports data for General Contractors and Design-Builders directly contracted by the District. This Program does not collect data or report on subcontractors and suppliers working on projects when their agreement is not directly with the District unless reports, including this information, by a General Contractor or Design-Builder are submitted. This Program also does not collect data on Construction Managers, Architects, Engineers and other Consultants. As a result, this report does not reflect information on SLDBE firms and companies in these categories.

2. PROGRAM SUMMARY

A. CURRENT ACTIVITIES

1. Financials and Funding

- a. \$3,011,089 was expended this reporting period, January 1, 2022 – March 31, 2022. The total expended to March 31, 2022 for the entire Measure Q Bond Program was \$206,122,651 (58.2% spent).

2. Planning

- a. **Consultant Pools.** All but the Commissioning Services firms pool were refreshed in 2019. This remaining pool will be refreshed in 2022. A new Energy Consulting Services pool was established in February 2021.
- b. **District Design Standards (including Signage Standards):** District staff and Bond program team members continue to review and revise the Design Standards.
- c. **Facilities Master Plan:** With the completion and Board of Trustees adoption of the 2020 Facilities Master Plan Update, work on implementing the recommendations found within the Update continued throughout the quarter.
- d. **Series D and E Bond Issuances:** With the successful issuance of the Series D bonds completed on November 17, 2020, and the Series E bonds completed on October 6, 2021, overall program and project planning continued throughout the quarter focusing on the incorporation of Series D and Series E funds to deliver on going and newly identified projects.

3. Project Update for Active Projects

FAIRFIELD CAMPUS:

- **Library/Learning Resource Center Project (Building 100 Replacement):** Construction continues. Interior Work – painting; mechanical/electrical/plumbing including system testing/balancing; data center move; fire alarm testing and inspection; elevator work; and door operators/access readers. Exterior Work – landscaping and irrigation; and fire lane work. Punchlist work and commissioning at new building. Existing Building 100 abatement completed and demolition began. Held Ribbon Cutting Ceremony at new building on March 14, 2022.
- **Building 300 Modernization Project:** Pending proposal receipt from study consultant for anticipated scope of work to move into design.
- **Early Learning Center Expansion Project:** Design proceeding, coordination between designer and modular building fabricator on going.
- **On Campus Housing Project:** Needs assessment/market analysis continues. SB 169 \$150,000 planning grant is pending final budget approval. Survey development continues. Feasibility study will proceed once assessment and market analysis are complete.
- **Small Capital Projects:**
 - B1800B Exterior Roof Canopy – *Project is now closed.*
 - Baseball and Softball Clubhouse Replacement – Site construction work has begun. Portable building drawings reviewed and released; fabrication is in process.
 - Building 1800B Print Shop – *Project is now closed.*
 - Early College High School Portables – *Project is now closed.*
 - Fairfield Campus Building Exteriors – *Project is now closed.*

- Fairfield Campus Central Plant and Electrification – Final report has been submitted with Project scope recommendations. Consultant proposal received and reviewed – contract for project design is in process. Once contract is executed, work will begin.
- Fairfield Campus Pool and Equipment Study – Final report has been submitted with Project scope recommendations. Budget/funding alignment and Project approval from the Board required to begin.
- Fairfield Campus Substation #3 Study – Final report has been submitted with Project scope recommendations. Consultant proposal received and reviewed – contract for design of Substations #4 and #4 is in process. Once contract is executed, work will begin.
- Pedestrian & Vehicular Wayfinding Signs – A few pedestrian signs remain to be installed, which will occur now that the new Library/Learning Resource Center is complete and demolition of old Building 100 is underway. Project close out is in process.

VACAVILLE CAMPUS:

- **Vacaville Classroom Building ‘Annex’ Renovation (Phase 2) – Corbels Removal:** All work is complete. Project close out is proceeding.
- **Aeronautics Nut Tree Facility Improvements:** Meetings continued with Solano County Building Department, Vacaville City Building Department, City of Vacaville’s Utility and Public Works Department, and PG&E prior to bidding. Bidding is in process.
- **Vacaville Annex Cares Act Upgrade:** This project consists of upgrading the indoor ventilation by replacing HVAC equipment and controls, as measures to reduce the spread of infection. The existing roof will also be removed and replaced.

VALLEJO CAMPUS:

- **Small Capital Projects:**
 - Belvedere Fence – County comments pending – 3-4 month review period.
 - Autotech Vehicle Security – Design work has proceeded and is in review by the District prior to submitting to DSA.

DISTRICTWIDE PROJECTS:

- **IT Infrastructure Project (Phase 2):** Equipment purchases and installations continue. Planning for and implementation of Series D and Series E funded work continues.
- **IT Infrastructure Project (Phase 3):** Planning for and implementation of Series D and Series E funded work continues. Equipment purchases and installations continue.
- **Infrastructure Improvements – Solar Energy:** Design-Builder/Operator-Maintainer proposals were received and are under review.

- **Small Capital Projects:**
 - Fairfield Campus Door Hardware Installation – This Project will upgrade door hardware and improve building security.
- **ADA Improvements (Phase 1):**
 - Work continued on updating the ADA Transition Plan and Barrier Removal Program with data collection complete and the report in production. Work on the Self Evaluation Study of Policies and Procedures continues.
- **Planning, Assessments & Program Management:**
 - On-going activities of the District Bond team, program management team, and consultants to support the Bond Program. Throughout the quarter, COVID-19 impacts and project adjustments have been a significant focus for the Bond team and District staff to address with the goal to eliminate and/or reduce negative impacts to projects.
 - Work on both the Series D and Series E bond spending plan, project planning and implementation is proceeding.

4. Communications

- a. **User Groups:**
 - User groups for the Library/Learning Resource Center and other Small Capital Projects met as needed to develop and deliver projects.
- b. **Community Outreach:**
 - In 2015, the Board approved a Small, Local and Diverse Business Enterprises (SLDBE) Program to ensure inclusion of Solano County businesses in contracting and supplier opportunities generated by the Measure Q Bond Program.
 - Revisions to the SLDBE Program were approved by the Board on June 6, 2018. For contracts initiated after June 6, 2018, the participation goal was revised to be 20% of the construction cost, achievable through the combined participation of the following:
 - Local DBE Businesses (minimum 10%)
 - Local non-DBE Businesses
 - Non-local DBE Businesses

The participation goal is per project for large projects, and overall for small projects. The status of SLDBE participation in the Bond projects is tracked and reported at regular intervals, with a final reporting at the end of each project.

Following are the current participation statistics.

- Status: Small Capital Projects – Phase 1 (participation goal 15%)
Construction Contracts, \$1.64M, (100% contracts in place)
Certified Small Local Diverse Businesses \$160,782 9.80%
Local Businesses \$261,291 15.93%
- Status: Small Capital Projects – Phase 2 (participation goal 20%)
Construction Contracts, \$4.69M
Certified Small Local Diverse Businesses \$117,557 2.66%
Local Businesses \$1,408,703 31.91%
Non-local Certified DBEs \$2,211,719 50.10%
- Library/Learning Resource Center (participation goal 20%)
Construction Contracts, \$32,946,433 (100% contracts in place)
Certified Small Local Diverse Businesses \$4,630,311 14.02%
Local Businesses \$718,961 2.18%
Non-local Certified DBEs \$7,609,396 23.04%

c. **City and Local Agency Communications:**

- Communications with the Airport Manager’s Office, Solano County Building Department, Vacaville City Building Department and PG&E regarding Nut Tree Aeronautics facility improvements and work coordination.

5. Citizens Bond Oversight Committee (CBOC):

- a. A CBOC Meeting was held on January 11, 2022. The CBOC discussed stakeholder engagement, CABOC (California Association of Bond Oversight Committees), leveraging bond funds with other funds, and COVID-19 challenges. There was a presentation (with discussion) on Project Changes. The February 16, 2022 Quarterly Progress Report was reviewed and questions were answered. Project updates were provided and questions addressed.
- b. The next CBOC Meeting is tentatively scheduled for July 12, 2022.

6. Board of Trustee Actions – Bond Program Related Items

Board Meeting Minutes can be viewed on the College’s website, www.solano.edu.

a. **January 19, 2022 Regular Board Meeting,**

4000 Suisun Valley Road, Fairfield

The following Consent and Action Items were approved at this meeting:

- Notice of Completion for Construction Services for the Cooling Tower Maintenance Project
- Measure Q Bond Projection Initiation – IT Infrastructure Improvements Project, Phase 4
- Measure Q Bond Project Initiation – Small Capital Projects, Phase 4
- Measure Q Bond Project Initiation – Vacaville Annex Cares Act Upgrade Project
- Surplus Excess Furniture for the Library/Learning Resource Center Project (Building 100 Replacement)

b. **February 2, 2022 Regular Board Meeting, Board Study Session**

4000 Suisun Valley Road, Fairfield

The following Consent and Action Items were approved at this meeting:

- Notice of Completion for Construction Services for the Fire Lane Electrical Vault Lids Project
- Contract to Lovgren & Associates for Storage of New Furniture for the Library/Learning Resource Center
- Contract Amendment #2 to Optima Inspections, Inc. for Project Inspector Services for the Library/Learning Resource Center

c. **February 16, 2022 Regular Board Meeting,**

4000 Suisun Valley Road, Fairfield

The following Consent and Action Item was approved at this meeting:

- Change Order #1 to Development Group, Inc. for Information Technology Equipment and Implementation Services for the Library/Learning Resource Center.

d. **March 2, 2022 Regular Board Meeting, Board Study Session**

4000 Suisun Valley Road, Fairfield

The following Consent and Action Items were approved at this meeting:

- Notice of Completion for Construction Services for the Vacaville Center Annex Corbels Removal Project (Phase 3)
- Measure Q Bond Project Initiation - Central Plant Replacement Project
- Contract Award to Salas O'Brien for Professional Services for the Fairfield Campus Central Plant Replacement Project
- Measure Q Bond Project Initiation – Replace Substations #3 and #4
- Contract Award to Salas O'Brien for Professional Services for the Fairfield Campus Replacement Substations #3 and #4 Project
- Approval of Contract Change Order #19 to BHM Construction, Inc. for the Fairfield Library/Learning Resource Center Project
- Contract Amendment #3 to Noll & Tam Architects for Professional Services for the Library/Learning Resource Center Project (Building 100 Replacement)
- Contract Amendment #1 to PMP Environmental Consulting, Inc. for Professional Services for the Library/Learning Resource Center (Building 100 Replacement) Project

e. **March 16, 2022 Regular Board Meeting,**

4000 Suisun Valley Road, Fairfield

The following Consent and Action Items were approved at this meeting:

- There were no Consent or Action Items at this meeting.

B. PROGRAM - NEXT 90 DAYS

1. Continued oversight of active projects and planning for future projects.
2. Continued monitoring of impacts and adjustments made in response to COVID-19.
3. Continued user engagement in all active building projects.
4. Ongoing communication with the campus community regarding any interruptions related to upcoming construction activities.
5. Citizens Bond Oversight Committee Meeting.
6. Continue with Outreach events and efforts.
7. Continued Design Standards updates.

8. Continued implementation and regular monitoring of the updated Bond Spending Plan reflecting the inclusion and implementation of projects using Series D and Series E funds and in response to the 2020 Facilities Master Plan Update.

C. PROGRAM – ISSUES

1. Continued monitoring of and addressing any impacts that arise from COVID-19. There have been some supply chain interruptions and labor/material impacts, which have been mitigated or fully accommodated by projects in design and construction.

3. FAIRFIELD CAMPUS SUMMARY

A. CURRENT ACTIVITIES – Please see the attached project sheets (Section 10 of this Report) for detailed information about the projects. The following is a list of current projects:

1.	Library/Learning Resource Center (Building 100 Replacement)	Section 10, Active Projects
2.	Building 300 Modernization	Section 10, Active Projects
3.	Early Learning Center Expansion	Section 10, Active Projects
4.	On Campus Housing	Section 10, Active Projects
5.	Small Capital Projects – B1800B Exterior Roof Canopy	Section 10, Closed Projects
6.	Small Capital Projects – Baseball and Softball Clubhouse Replacement	Section 10, Active Projects
7.	Small Capital Projects – Early College High School Portables	Section 10, Closed Projects
8.	Small Capital Projects – Fairfield Campus Building Exteriors	Section 10, Closed Projects
9.	Small Capital Projects – Fairfield Campus Central Plant and Electrification	Section 10, Projects in Close Out
10.	Small Capital Projects – Fairfield Campus Substations #3 and #4	Section 10, Active Projects
11.	Small Capital Projects – Fairfield Campus Pool and Equipment	Section 10, Active Projects
12.	Small Capital Projects – Pedestrian & Vehicular Wayfinding Signs	Section 10, Projects in Close Out
13.	Small Capital Projects (Phases 1 and 2) – Other: Fairfield Campus Door Hardware Installation	Section 10, Active Projects

B. NEXT 90 DAYS

1. Library/Learning Resource Center (Building 100 Replacement): Complete demolition of old Building 100. Complete architectural and mechanical punch lists at new building. Complete landscaping where old building is being demolished.
2. Building 300 Modernization: Receive consultant proposal from Initial Study designer for design services. Obtain Board Approval of consultant contract and begin design.
3. Early Learning Center Expansion: Complete Construction Document Phase. DSA Submittal, back-check and approval.
4. On Campus Housing: Continue work on the Needs Assessment/Market Analysis and Feasibility Study Phases. Complete and issue surveys and data collection for assessment and analysis.
5. Small Capital Projects – B1800B Exterior Roof Canopy: *This Project is now closed.*

6. Small Capital Projects – Baseball and Softball Clubhouse Replacement: Complete site demolition. Complete site infrastructure improvements. Complete modular building installation.
7. Small Capital Projects – Early College High School Portables: *This Project is now closed.*
8. Small Capital Projects – Fairfield Campus Building Exteriors: *This Project is now closed.*
9. Small Capital Projects – Fairfield Campus Central Plant and Electrification: Study complete and in Project close out. Begin design of recommended Project scope once consultant contract is approved. *New Project Sheet to be provided with future Quarterly Report for the Project which developed as a result of the Study.*
10. Small Capital Projects – Fairfield Campus Substations #3 and #4: Begin design once consultant contract is approved. *Project Sheet to be provided with future Quarterly Report.*
11. Small Capital Projects – Fairfield Campus Pool and Equipment: Align budget/funding with Project scope. Receive Board approval for consultant contract. Begin design work. *Project Sheet to be provided with future Quarterly Report.*
12. Small Capital Projects – Pedestrian & Vehicular Wayfinding Signs: Install remaining pedestrian signs following completion of the new Library/Learning Resource Center Building, demolition of old Building 100, and site work in the area of old Building 100. Close out Project.
13. Small Capital Projects (Phases 1 and 2) – Other:
 - i. Fairfield Campus Door Hardware Installation

Please note that these small projects do not have additional details on status due to their small scale and generally quick delivery timeframe. They are listed here and included on one “Project Report” sheet in Section 10 of this Report for informational purposes only.

C. ISSUES

1. Monitoring of and addressing any impacts that arise from COVID-19.

4. VACAVILLE CAMPUS SUMMARY

- A. CURRENT ACTIVITIES** – Please see the attached project sheets (Section 10 of this Report) for detailed information about each project. The following is a list of current projects:

1.	Vacaville Classroom Building ‘Annex’ Renovation (Phase 2) - Corbels Removal	Section 10, Projects in Close Out
2.	Aeronautics Nut Tree Facility Improvements	Section 10, Active Projects
3.	Vacaville Annex Cares Act Upgrade	Section 10, Active Projects

B. NEXT 90 DAYS

1. Vacaville Classroom Building ‘Annex’ Renovation (Phase 2) - Corbels Removal: Complete Project close out.
2. Aeronautics Nut Tree Facility Improvements: Start construction, including PG&E work. Complete construction and close out Project.
3. Vacaville Annex Cares Act Upgrade: Receive DSA comments and approval. Bid Project work.

C. ISSUES

1. Monitoring of and addressing any impacts that arise from COVID-19.

5. VALLEJO CAMPUS SUMMARY

A. CURRENT ACTIVITIES – Please see the attached project sheets (Section 10 of this Report) for detailed information about each project. The following is a list of current projects:

1.	Small Capital Projects (Phases 1 and 2) – Other: Belvedere Fence, and Autotech Vehicle Security	Section 10, Active Projects
----	--	-----------------------------

B. NEXT 90 DAYS

1. Small Capital Projects (Phases 1 and 2) – Other:
 - i. Belvedere Fence
 - ii. Autotech Vehicle Security

Please note that these small projects do not have additional details on status due to their small scale and generally quick delivery timeframe. They are listed here and included on one “Project Report” sheet in Section 10 of this Report for informational purposes only.

C. ISSUES

1. Monitoring and addressing any impacts that arise from COVID-19.

6. DISTRICTWIDE PROJECTS SUMMARY

- A. CURRENT ACTIVITIES** – Please see the attached project sheets (Section 10 of this Report) for detailed information about each project. The following is a list of current projects:

1.	IT Infrastructure Improvements (Phase 2)	Section 10, Active Projects
2.	IT Infrastructure Improvements (Phase 3)	Section 10, Active Projects
3.	Infrastructure Improvements – Solar Energy	Section 10, Active Projects
4.	ADA Improvements (Phase 1)	Section 10, Active Projects
5.	Planning, Assessments & Program Management	Section 10, Active Projects

B. NEXT 90 DAYS

1. IT Infrastructure Improvements (Phase 2): Equipment purchases and installations to continue. Continue planning and implementing projects associated with Series D and Series E funding.
2. IT Infrastructure Improvements (Phase 3): Continue planning and implementing projects associated with Series D and Series E funding. Equipment purchases and installations to continue.
3. Infrastructure Improvements – Solar Energy: Select Design-Builder/Operator-Maintainer Team. Negotiate required agreements and receive Board approval. This will include a Public Hearing.
4. ADA Improvements (Phase 1): Continue with implementation of updating the ADA Transition Plan and Barrier Removal Program. Continue work on Self Evaluation of Policies and Procedures.
5. Planning, Assessments & Program Management: On-going activities of the District Bond team, program management team, and consultants to support the Bond Program and its projects. Continue work on Design Standards revisions and updates. Continue planning for and implementation of projects funded with Series D and Series E bond funds.

C. ISSUES

1. No major issues or concerns at this time.

7. FINANCIAL SUMMARY

A. BUDGET UPDATE

1. Please see the attached “Program Summary Budget” for a project-by-project view of the budget.
 - a. Through March 31, 2021, a total of \$206,122,651 (58.2% of total original Bond plus interest) has been expended against the Bond Program budget of \$353,997,340.
 - b. This financial period, January 1, 2022 through March 31, 2022, expenditures totaled \$3,011,089.
 - c. Total amount drawn from original Bond has been \$289,996,899.
 - d. Total interest accrued has been \$5,997,340.
 - e. Total remaining amount available for future tranches is \$58,003,101.
2. Projected spending cash flow continues to be monitored in relation to Bond spending requirements.

B. RESERVE STATUS

Reserve for the Measure Q Bond Program is based on the approved November 17, 2021 Revised Bond Spending Plan. Bond interest accrues annually.

C. CONTRACT STATUS

The Program Summary Report provides “Current Project Budget” and “Measure Q Expenditure” information through March 31, 2022.

D. PAYMENT STATUS

Contractor and Consultant payments have been processed within a satisfactory time period.

8. PROGRAM BUDGET SUMMARY

- A. Program Budget Summary – organized by Program, Campus and Project, and based upon Board of Trustees approved November 17, 2021 Revised Bond Spending Plan.



June 15, 2022 Quarterly Report

Status ⁽⁴⁾	PROJECT NAME	MEASURE Q PROJECT BUDGET AS OF 2/17/2021 BSP ⁽¹⁾	BOT APPROVED CHANGE	MEASURE Q PROJECT BUDGET AS OF 11/17/2021 BSP ⁽²⁾	OTHER FUNDING BUDGET ⁽³⁾	OTHER FUNDING EXPENDITURES AS OF 3/31/2022	MEASURE Q EXPENDITURES AS OF 3/31/2021	MEASURE Q PERCENT SPENT	PROJECT NO.
	FF CAMPUS								
A	Library & Learning Resource Center	\$ 23,300,000	\$ -	\$ 23,300,000	\$ 20,691,000	\$ 19,888,592	\$ 17,733,454	76.1%	820110
C	Performing Arts Building (Phase 1) B1200 Renovation	\$ 6,229,718	\$ -	\$ 6,229,718	\$ 13,760,000	\$ 13,760,000	\$ 6,229,718	100.0%	821210/821220/821215
F	Performing Arts Building (Phase 2)/Costume Shops	\$ 12,033,151	\$ (11,800,000)	\$ 233,151	\$ -	\$ -	\$ 33,151	14.2%	821230
C	Science Building (Phase 1)	\$ 35,005,734	\$ -	\$ 35,005,734	\$ -	\$ -	\$ 35,005,734	100.0%	820310
A	Science & Math Building (Phase 2)/B300 Renovation	\$ 3,000,000	\$ (1,000,000)	\$ 2,000,000	\$ -	\$ -	\$ 28,430	1.4%	820320
F	Career Technology Building (CTE)	\$ 4,500,000	\$ -	\$ 4,500,000	\$ -	\$ -	\$ -	0.0%	TBD
C	Agriculture (Horticulture)	\$ 1,371,000	\$ (22,533)	\$ 1,348,467	\$ -	\$ -	\$ 1,348,467	100.0%	821030/821035
F	Modernization B1400	\$ 4,000,000	\$ -	\$ 4,000,000	\$ -	\$ -	\$ -	0.0%	TBD
A	On-Campus Housing	\$ 500,000	\$ -	\$ 500,000	\$ -	\$ -	\$ 31,662	6.3%	822020
A	Early Learning Center Expansion	\$ 2,500,000	\$ 2,500,000	\$ 5,000,000	\$ -	\$ -	\$ 26,668	0.5%	820220
	VV CAMPUS								
A	VV Classroom Building Purchase & Renovation	\$ 7,904,466	\$ (500,000)	\$ 7,404,466	\$ -	\$ -	\$ 7,184,069	97.0%	830200/830210/830220
A	VV Annex Cares Act Upgrade	\$ -	\$ 1,000,000	\$ 1,000,000	\$ 1,000,000	\$ 19,350	\$ -	0.0%	830240
C	Biotechnology & Science Building	\$ 33,315,666	\$ -	\$ 33,315,666	\$ -	\$ -	\$ 33,315,666	100.0%	830310/830320/830330
A	Aeronautics & Workforce Development Building	\$ 2,084,730	\$ (200,000)	\$ 1,884,730	\$ -	\$ -	\$ 1,409,708	74.8%	830400/830410/830420
F	Student Success Center/LRC	\$ 1,200,000	\$ (1,000,000)	\$ 200,000	\$ -	\$ -	\$ -	0.0%	TBD
F	Fire Training	\$ 500,000	\$ (300,000)	\$ 200,000	\$ -	\$ -	\$ -	0.0%	TBD
C	Vacaville Center HVAC Upgrade	\$ 2,150,306	\$ -	\$ 2,150,306	\$ -	\$ -	\$ 2,150,306	100.0%	830230
	VJ CAMPUS								
C	Vallejo Property Purchase Belvedere	\$ 4,794,343	\$ -	\$ 4,794,343	\$ -	\$ -	\$ 4,794,343	100.0%	840310
C	Vallejo Property Purchase Northgate	\$ 6,871,471	\$ -	\$ 6,871,471	\$ -	\$ -	\$ 6,871,471	100.0%	840910
F	Site Improvements	\$ -	\$ -	\$ -	\$ -	\$ -	\$ -	0.0%	840920/840320
C	Autotechnology Building	\$ 23,735,961	\$ -	\$ 23,735,961	\$ -	\$ -	\$ 23,735,961	100.0%	840210/840220
F	Student Success Center/LRC	\$ 1,200,000	\$ (1,000,000)	\$ 200,000	\$ -	\$ -	\$ -	0.0%	TBD
F	Career Technology Building	\$ 18,200,000	\$ (8,100,000)	\$ 10,100,000	\$ -	\$ -	\$ -	0.0%	TBD
C	Vallejo Center HVAC Upgrade	\$ 2,135,178	\$ -	\$ 2,135,178	\$ -	\$ -	\$ 2,135,178	100.0%	840430
	INFRASTRUCTURE IMPROVEMENTS								
A	IT Infrastructure Improvements	\$ 14,200,000	\$ (729,000)	\$ 13,471,000	\$ -	\$ -	\$ 6,916,953	51.3%	812100/812500 to 812590
C	Utility Infrastructure Upgrade (Energy)	\$ 24,671,331	\$ -	\$ 24,671,331	\$ 712,447	\$ 712,447	\$ 24,671,331	100.0%	814010/814020/814030/ 814040/814050
A	5 Megawatt Solar Installation (Solar Energy)	\$ 13,000,000	\$ (2,500,000)	\$ 10,500,000	\$ -	\$ -	\$ 50,949	0.5%	814060
F	Replacement Substations 3, 4 and 5	\$ 3,000,000	\$ 5,500,000	\$ 8,500,000	\$ -	\$ -	\$ -	0.0%	TBD
F	Modernize Pool and Equipment	\$ 2,500,000	\$ -	\$ 2,500,000	\$ -	\$ -	\$ -	0.0%	TBD
F	Central Plant Replacement	\$ -	\$ 16,000,000	\$ 16,000,000	\$ -	\$ -	\$ -	0.0%	TBD
F	Water Conservation/Environmental Impact Improvements	\$ -	\$ 3,000,000	\$ 3,000,000	\$ -	\$ -	\$ -	0.0%	TBD
F	Underground Hydraulic Chilled & Hot Water Loops	\$ -	\$ 1,000,000	\$ 1,000,000	\$ -	\$ -	\$ -	0.0%	TBD
F	HVAC Environmental Safety Upgrades	\$ -	\$ 6,500,000	\$ 6,500,000	\$ -	\$ -	\$ -	0.0%	TBD
F	Underground 12,000 Volt Campus Loop	\$ -	\$ 2,500,000	\$ 2,500,000	\$ -	\$ -	\$ -	0.0%	TBD
	ADA & CLASSROOM IMPROVEMENTS								
A	Small Capital Projects	\$ 30,877,958	\$ (6,043,999)	\$ 24,833,959	\$ -	\$ -	\$ 10,179,687	41.0%	813005 to 813099
A	ADA Improvements	\$ 8,000,000	\$ -	\$ 8,000,000	\$ 50,000	\$ 50,000	\$ 643,118	8.0%	813210, 815010-815030
	PLANNING, ASSESSMENTS & PROGRAM MANAGEMENT								
A	Program Management, District Support and Planning	\$ 53,563,000	\$ (4,827,000)	\$ 48,736,000	\$ -	\$ 1,918	\$ 21,044,205	43.2%	811010/811011/811020/ 811021/811030
	RESERVE, INTEREST & TREASURY FEES								
	Program Reserve	\$ 6,837,831	\$ 279,280	\$ 7,117,111	\$ -	\$ -	\$ -	-	
	Treasury Fees	\$ -	\$ 558,748	\$ 558,748	\$ -	\$ -	\$ 582,423	104%	
	TOTAL BOND SPENDING PLAN	\$ 353,181,844	\$ 353,997,340	\$ 36,213,447	\$ 34,432,308	\$ 206,122,651	\$ 58,2%		

⁽¹⁾ Per Bond Spending Plan Revision Approved by BOT 2/17/2021

⁽²⁾ Per Bond Spending Plan Revision Approved by BOT 11/17/2021

⁽³⁾ Note other funding sources include State Funding, Proposition 39 Energy, Solano Transportation Authority and Cares Act

⁽⁴⁾ A=Active Project; F=Future Project/Project On Hold; C=Closed Project

9. SCHEDULE FOR MAJOR ACTIVE BUILDING PROJECTS

- A. Schedule for Major Active Building Projects based on November 17, 2021 Board-Approved Revised Bond Spending Plan.

Note that the following schedule for IT Infrastructure Improvements reflects Phase 2 (Tranche 2) and Phase 3 (Tranche 3), as these are the projects that are active.

Completed projects are no longer included.



Schedule for Major Active Building Projects
Solano Community College
Per Bond Spending Plan Approved 11/17/2021

	2013		2014		2015		2016		2017		2018		2019		2020		2021		2022		2023		2024		2025		
	Q1	Q2	Q3	Q4	Q1	Q2	Q3	Q4	Q1	Q2	Q3	Q4	Q1	Q2	Q3	Q4	Q1	Q2	Q3	Q4	Q1	Q2	Q3	Q4	Q1	Q2	
IT INFRASTRUCTURE IMPROVEMENTS																											
June 15, 2022																											
IT Infrastructure Improvements Phase 2, including B100 Generator																											
August 2017 Schedule/Budget																											
December 2017 Schedule/Budget																											
Current Schedule (% of current phase)																											
Current Expenditures (% of Budget)																											
Current Expenditures (\$)																											
IT Infrastructure Improvements Phase 3																											
February 2021 Schedule/Budget																											
Current Schedule (% of current phase)																											
Current Expenditures (% of Budget)																											
Current Expenditures (\$)																											
Solar Energy - 5 Megawatt Solar Installation																											
February 2021 Schedule/Budget																											
November 2021 Schedule/Budget																											
Current Schedule (% of current phase)																											
Current Expenditures (% of Budget)																											
Current Expenditures (\$)																											
ADA & CLASSROOM IMPROVEMENTS																											
Small Capital Projects Phase 1																											
August 2014 Schedule/Budget																											
September 2016 Schedule/Budget																											
March 1, 2017 Schedule/Budget																											
May 1, 2019 Schedule/Budget																											
March 18, 2020 Schedule/Budget																											
February 17, 2021 Schedule/Budget																											
Current Schedule (% of current phase)																											
Current Expenditures (% of Budget)																											
Current Expenditures (\$)																											
Small Capital Projects Phase 2																											
April 2017 Schedule/Budget																											
May 1, 2019 Schedule/Budget																											
November 20, 2019 Schedule/Budget																											
March 18, 2020 Schedule/Budget																											
October 7, 2020 Schedule/Budget																											
February 17, 2021 Schedule/Budget																											
Current Schedule (% of current phase)																											
Current Expenditures (% of Budget)																											
Current Expenditures (\$)																											

Notes:
⁽¹⁾Library/Learning Resource Center (Building 100 Replacement) - Current schedule reflects both State and Measure Q funded scope. However, only Measure Q Budget and Expenditures are reflected here.
⁽²⁾Yacaville Annex Cares Act Upgrade (HVAC/Roof) - Current schedule reflects both Cares Act and Measure Q funded scope. However, only Measure Q Budget and Expenditures are reflected here.

10. PROJECT REPORTS

- A. Project Report Updates for Active Projects
- B. Project Report Update for Projects in Close-Out
- C. Project Report Updates for Closed Projects

Project Reports include a dashboard column next to schedule and budget indicating one of the following:

- “Green” – OK. Project is on schedule and on budget.
- “Yellow” – Caution. Project is significantly delayed with some impacts, but solutions are in place to mitigate any impacts. Project is at 0% budget contingency remaining balance, and project is not near completion.
- “Red” – Project is significantly delayed and/or over budget and may require Board approval of budget change.

ACTIVE PROJECTS



**Solano Community College
Library/Learning Resource Center
(Building 100 Replacement)**

A/E: Noll & Tam Architects

Contractor: BHM Construction

Status: Active



PROJECT SUMMARY

Project: Library/Learning Resource Center

Project Scope:

This project includes design and construction of a new Fairfield Campus Library/Learning Resource Center to replace the B100 Library, demolition of old portable buildings and B100 Library, and site restoration of these areas. The project will include the following components: planning, surveys and technical studies, design, construction, demolition, furniture, fixtures and equipment, inspection and project/construction management.

Project Manager:	Lucky Lofton	Status:	Active
Construction Manager:	Cary Talbott (Swinerton)		
Original Project Budget:	\$42,681,000	Current Project Budget:	\$43,991,000
Project Start:	November 2017	Project End:	July 2022

Legend	
<input type="checkbox"/>	Not Started
<input type="checkbox"/>	In Progress
<input checked="" type="checkbox"/>	Completed

SCHEDULE

DESCRIPTION	Design			DSA	BID	IN CONST	% Comp.	OCCUPIED	ON SCHED	COMMENTS
	SD	DD	CD							
Construction Phase	<input checked="" type="checkbox"/>	<input checked="" type="checkbox"/>	<input checked="" type="checkbox"/>	<input checked="" type="checkbox"/>	<input checked="" type="checkbox"/>	<input type="checkbox"/>	96.0%	<input type="checkbox"/>	Yes	Construction Phase

BUDGET

FUNDING SOURCE: Measure Q, State and Cares Act

JCAF	Amount Budgeted			Total Budget (A)	Encumbered (B)	Forecast to Complete (C)	Forecast at Completion (B+C)	Expenditures to Date (E)	Encumbrance Balance (B-E=F)	Budget Balance (A-B=G)
	Measure Q	State Capital Outlay	Cares Act							
1. SITE ACQUISITION	\$ -	\$ -	\$ -	\$ -	\$ -	\$ -	\$ -	\$ -	\$ -	\$ -
2. PLANS	\$ 48,217	\$ -	\$ -	\$ 48,217	\$ 48,217	\$ -	\$ 48,217	\$ 45,417	\$ 2,800	\$ -
3. WORKING DRAWINGS	\$ 202,849	\$ -	\$ -	\$ 202,849	\$ 102,849	\$ 100,000	\$ 202,849	\$ 62,438	\$ 40,412	\$ 100,000
4. CONSTRUCTION	\$ 18,300,333	\$ -	\$ -	\$ 18,300,333	\$ 17,873,518	\$ 426,815	\$ 18,300,333	\$ 14,479,278	\$ 3,394,240	\$ 426,815
5. CONTINGENCY	\$ 19,447	\$ -	\$ -	\$ 19,447	\$ -	\$ 19,447	\$ 19,447	\$ -	\$ -	\$ 19,447
6. ARCHITECTURAL AND ENGINEERING OVERSIGHT	\$ 572,821	\$ -	\$ -	\$ 572,821	\$ 544,655	\$ 28,166	\$ 572,821	\$ 371,461	\$ 173,194	\$ 28,166
7. TESTS AND INSPECTIONS	\$ 236,117	\$ -	\$ -	\$ 236,117	\$ 187,795	\$ 48,323	\$ 236,117	\$ 169,100	\$ 18,695	\$ 48,323
8. CONSTRUCTION MANAGEMENT	\$ 1,222,362	\$ -	\$ -	\$ 1,222,362	\$ 1,222,362	\$ -	\$ 1,222,362	\$ 469,653	\$ 752,710	\$ -
9. TOTAL CONSTRUCTION COSTS (4 THRU 8 ABOVE)	\$ 20,351,080	\$ -	\$ -	\$ 20,351,080	\$ 19,828,330	\$ 522,750	\$ 20,351,080	\$ 15,489,492	\$ 4,338,838	\$ 522,750
10. FURNITURE AND GROUP II EQUIPMENT	\$ 2,697,854	\$ -	\$ -	\$ 2,697,854	\$ 2,681,981	\$ 15,873	\$ 2,697,854	\$ 2,136,108	\$ 545,873	\$ 15,873
MEASURE Q - PROJECT COST	\$ 23,300,000	\$ -	\$ -	\$ 23,300,000	\$ 22,661,377	\$ 638,623	\$ 23,300,000	\$ 17,733,454	\$ 4,927,923	\$ 638,623
1. SITE ACQUISITION	\$ -	\$ -	\$ -	\$ -	\$ -	\$ -	\$ -	\$ -	\$ -	\$ -
2. PLANS	\$ -	\$ 1,543,000	\$ -	\$ 1,543,000	\$ 1,543,000	\$ -	\$ 1,543,000	\$ 1,543,000	\$ -	\$ -
3. WORKING DRAWINGS	\$ -	\$ 1,209,000	\$ -	\$ 1,209,000	\$ 1,209,000	\$ -	\$ 1,209,000	\$ 1,209,000	\$ -	\$ -
4. CONSTRUCTION	\$ -	\$ 15,101,485	\$ -	\$ 15,101,485	\$ 15,101,485	\$ -	\$ 15,101,485	\$ 15,101,485	\$ -	\$ -
5. CONTINGENCY	\$ -	\$ -	\$ -	\$ -	\$ -	\$ -	\$ -	\$ -	\$ -	\$ -
6. ARCHITECTURAL AND ENGINEERING OVERSIGHT	\$ -	\$ 404,908	\$ -	\$ 404,908	\$ 404,908	\$ -	\$ 404,908	\$ 401,332	\$ 3,576	\$ -
7. TESTS AND INSPECTIONS	\$ -	\$ 467,460	\$ -	\$ 467,460	\$ 467,460	\$ -	\$ 467,460	\$ 467,460	\$ -	\$ -
8. CONSTRUCTION MANAGEMENT	\$ -	\$ 965,146	\$ -	\$ 965,146	\$ 965,146	\$ -	\$ 965,146	\$ 941,914	\$ 23,232	\$ -
9. TOTAL CONSTRUCTION COSTS (4 THRU 8 ABOVE)	\$ -	\$ 16,939,000	\$ -	\$ 16,939,000	\$ 16,939,000	\$ -	\$ 16,939,000	\$ 16,912,191	\$ 26,809	\$ -
10. FURNITURE AND GROUP II EQUIPMENT	\$ -	\$ -	\$ -	\$ -	\$ -	\$ -	\$ -	\$ -	\$ -	\$ -
STATE CAPITAL OUTLAY - PROJECT COST	\$ -	\$ 19,691,000	\$ -	\$ 19,691,000	\$ 19,691,000	\$ -	\$ 19,691,000	\$ 19,664,191	\$ 26,809	\$ -
TOTAL CONSTRUCTION COSTS	\$ -	\$ -	\$ 1,000,000	\$ 1,000,000	\$ 773,901	\$ 226,099	\$ 1,000,000	\$ 224,401	\$ 549,500	\$ 226,099
CARES ACT - PROJECT COST	\$ -	\$ -	\$ 1,000,000	\$ 1,000,000	\$ 773,901	\$ 226,099	\$ 1,000,000	\$ 224,401	\$ 549,500	\$ 226,099
TOTAL PROJECT COST	\$ 23,300,000	\$ 19,691,000	\$ 1,000,000	\$ 43,991,000	\$ 43,126,278	\$ 864,722	\$ 43,991,000	\$ 37,622,047	\$ 5,504,231	\$ 864,722

Issues and Concerns

1. None.

Next 90 Days

1. Complete demolition of Building 100.
2. Complete architectural and mechanical punch lists.
3. Complete landscaping where old building was demolished.



Building 100 Demolition



Building 100 Demolition



Solano Community College Building 300 Modernization

A/E: Aedis Architects

Contractor: TBD

Status: Active



PROJECT SUMMARY

Project: Building 300 Modernization

Project Scope:

Building 300 Modernization Project is to renovate existing Building 300 on the Fairfield Campus. The project goal is to modernize the aging building to meet current standards. The project includes the following components: feasibility study, assessment, planning, design and construction.

Project Manager:	Noe Ramos	Status:	Pre-Design
Original Project Budget:	\$3,000,000	Current Project Budget:	\$2,000,000
Project Start:	April 2021	Project End:	November 2023

Legend	
<input type="checkbox"/>	Not Started
<input type="checkbox"/>	In Progress
<input checked="" type="checkbox"/>	Completed

SCHEDULE

DESCRIPTION	Design			DSA	BID	IN CONST	% Comp.	OCCUPIED	CLOSE-OUT	ON SCHED	COMMENTS
	SD	DD	CD								
Pre-Design Phase / Initial Study	<input type="checkbox"/>	<input type="checkbox"/>	<input type="checkbox"/>	<input type="checkbox"/>	<input type="checkbox"/>	<input type="checkbox"/>	100%	<input type="checkbox"/>	<input type="checkbox"/>	Yes	Initial Study Complete

OK

BUDGET

FUNDING SOURCE: Measure Q

JCAF	Amount Budgeted			Total Budget (A)	Encumbered (B)	Forecast to Complete (C)	Forecast at Completion (B+C)	Expenditures to Date (E)	Encumbrance Balance (B-E=F)	Budget Balance (A-B=G)
	Measure Q	State Capital Outlay	Prop 39							
1. SITE ACQUISITION	\$ -	\$ -	\$ -	\$ -	\$ -	\$ -	\$ -	\$ -	\$ -	\$ -
2. PLANS	\$ 52,645	\$ -	\$ -	\$ 52,645	\$ 28,430	\$ 24,215	\$ 52,645	\$ 28,430	\$ -	\$ 24,215
3. WORKING DRAWINGS	\$ 112,300	\$ -	\$ -	\$ 112,300	\$ -	\$ 112,300	\$ 112,300	\$ -	\$ -	\$ 112,300
4. CONSTRUCTION	\$ 1,500,000	\$ -	\$ -	\$ 1,500,000	\$ -	\$ 1,500,000	\$ 1,500,000	\$ -	\$ -	\$ 1,500,000
5. CONTINGENCY	\$ 175,230	\$ -	\$ -	\$ 175,230	\$ -	\$ 175,230	\$ 175,230	\$ -	\$ -	\$ 175,230
6. ARCHITECTURAL AND ENGINEERING OVERSIGHT	\$ 50,325	\$ -	\$ -	\$ 50,325	\$ -	\$ 50,325	\$ 50,325	\$ -	\$ -	\$ 50,325
7. TESTS AND INSPECTIONS	\$ 49,500	\$ -	\$ -	\$ 49,500	\$ -	\$ 49,500	\$ 49,500	\$ -	\$ -	\$ 49,500
8. CONSTRUCTION MANAGEMENT	\$ -	\$ -	\$ -	\$ -	\$ -	\$ -	\$ -	\$ -	\$ -	\$ -
9. TOTAL CONSTRUCTION COSTS (4 THRU 8 ABOVE)	\$ 1,775,055	\$ -	\$ -	\$ 1,775,055	\$ -	\$ 1,775,055	\$ 1,775,055	\$ -	\$ -	\$ 1,775,055
10. FURNITURE AND GROUP II EQUIPMENT	\$ 60,000	\$ -	\$ -	\$ 60,000	\$ -	\$ 60,000	\$ 60,000	\$ -	\$ -	\$ 60,000
11. TOTAL PROJECT COST	\$ 2,000,000	\$ -	\$ -	\$ 2,000,000	\$ 28,430	\$ 1,971,570	\$ 2,000,000	\$ 28,430	\$ -	\$ 1,971,570

OK

Issues and Concerns

1. No issues or concerns at this time.

Next 90 Days

1. Receive Architectural proposal from Initial Study Architect for design services.
2. Board Approval of Architectural Agreement.
3. Start project design.



Exterior of Building 300



Exterior of Building 300



Solano Community College On-Campus Housing

A/E: The Scion Group

Contractor: TBD

Status: Active



PROJECT SUMMARY

Project: On-Campus Housing	
Project Scope: The On-Campus Housing Project includes evaluating and assessing the need for and feasibility of on-campus housing at the Fairfield Campus. This project is anticipated as a partnership project whereby the District will work with a third party to plan, build, operate and maintain a housing project located on campus property. This is commonly referred to as a "P3" project. The current project cost estimate assumes that funding for this project will primarily be paid for by the third party, and the District will pay for the initial needs analysis and feasibility study. The project includes the following components: needs assessment and feasibility study, partner selection, planning, design, construction, and operations and maintenance services.	Project Manager: Priscilla Meckley Status: Active Original Project Budget: \$500,000 Current Project Budget: \$500,000 Project Start: June 2021 Project End: August 2026 (project occupancy)

Legend
<input type="checkbox"/> Not Started
<input type="checkbox"/> In Progress
<input checked="" type="checkbox"/> Completed

SCHEDULE

DESCRIPTION	Design			DSA	BID	IN CONST	% Comp.	OCCUPIED	CLOSE-OUT	ON SCHED	COMMENTS
	SD	DD	CD								
Needs Assessment / Market Study and Feasibility Study	<input type="checkbox"/>	<input type="checkbox"/>	<input type="checkbox"/>	<input type="checkbox"/>	<input type="checkbox"/>	<input type="checkbox"/>	11%	<input type="checkbox"/>	<input type="checkbox"/>	Yes	These initial phases of the Project are expected to be complete by June 2022.

BUDGET

FUNDING SOURCE: Measure Q

JCAF	Amount Budgeted			Total Budget (A)	Encumbered (B)	Forecast to Complete (C)	Forecast at Completion (B+C)	Expenditures to Date (E)	Encumbrance Balance (B-E=F)	Budget Balance (A-B=G)
	Measure Q	State Capital Outlay	Prop 39							
1. SITE ACQUISITION	\$ -	\$ -	\$ -	\$ -	\$ -	\$ -	\$ -	\$ -	\$ -	\$ -
2. PLANS	\$ 100,000	\$ -	\$ -	\$ 100,000	\$ 71,112	\$ 28,888	\$ 100,000	\$ 31,662	\$ 39,450	\$ 28,888
3. WORKING DRAWINGS	\$ 220,000	\$ -	\$ -	\$ 220,000	\$ -	\$ 220,000	\$ 220,000	\$ -	\$ -	\$ 220,000
4. CONSTRUCTION	\$ -	\$ -	\$ -	\$ -	\$ -	\$ -	\$ -	\$ -	\$ -	\$ -
5. CONTINGENCY	\$ -	\$ -	\$ -	\$ -	\$ -	\$ -	\$ -	\$ -	\$ -	\$ -
6. ARCHITECTURAL AND ENGINEERING OVERSIGHT	\$ 180,000	\$ -	\$ -	\$ 180,000	\$ -	\$ 180,000	\$ 180,000	\$ -	\$ -	\$ 180,000
7. TESTS AND INSPECTIONS	\$ -	\$ -	\$ -	\$ -	\$ -	\$ -	\$ -	\$ -	\$ -	\$ -
8. CONSTRUCTION MANAGEMENT	\$ -	\$ -	\$ -	\$ -	\$ -	\$ -	\$ -	\$ -	\$ -	\$ -
9. TOTAL CONSTRUCTION COSTS (4 THRU 8 ABOVE)	\$ 180,000	\$ -	\$ -	\$ 180,000	\$ -	\$ 180,000	\$ 180,000	\$ -	\$ -	\$ 180,000
10. FURNITURE AND GROUP II EQUIPMENT	\$ -	\$ -	\$ -	\$ -	\$ -	\$ -	\$ -	\$ -	\$ -	\$ -
11. TOTAL PROJECT COST	\$ 500,000	\$ -	\$ -	\$ 500,000	\$ 71,112	\$ 428,888	\$ 500,000	\$ 31,662	\$ 39,450	\$ 428,888

Issues and Concerns

1. No issues or concerns at this time.

Next 90 Days

1. Continue with Needs Assessment / Market Analysis and Feasibility Study Phases of the Project.



Solano Community College Fairfield Campus - Early Learning Center Expansion

A/E: HMR Architects

Contractor: TBD

Status: Active



PROJECT SUMMARY

Project: Early Learning Center Expansion

Project Scope:

The Early Learning Center Program is outgrowing its existing facility, work done under this project will be to expand the existing Child Development Center Program to provide care for additional children. The project includes the following components: design and construction.

Project Manager: Noe Ramos **Status:** Construction Document Phase

Original Project Budget: \$2,500,000 **Current Project Budget:** \$5,000,000

Project Start: October 2021 **Project End:** July 2023

Legend	
<input type="checkbox"/>	Not Started
<input type="checkbox"/>	In Progress
<input checked="" type="checkbox"/>	Completed

SCHEDULE

DESCRIPTION	Design			DSA	BID	IN CONST	% Comp.	OCCUPIED	CLOSE-OUT	ON SCHED	COMMENTS
	SD	DD	CD								
Construction Document Phase	<input checked="" type="checkbox"/>	<input checked="" type="checkbox"/>	<input type="checkbox"/>	<input type="checkbox"/>	<input type="checkbox"/>	<input type="checkbox"/>	40%	<input type="checkbox"/>	<input type="checkbox"/>	Yes	

BUDGET

FUNDING SOURCE: Measure Q

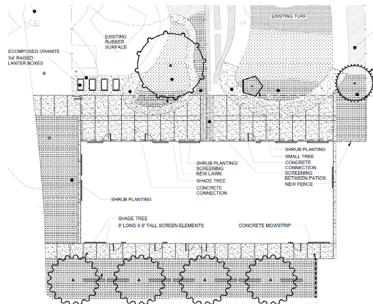
JCAF	Amount Budgeted			Total Budget (A)	Encumbered (B)	Forecast to Complete (C)	Forecast at Completion (B+C)	Expenditures to Date (E)	Encumbrance Balance (B-E=F)	Budget Balance (A-B=G)
	Measure Q	State Capital Outlay	Prop 39							
1. SITE ACQUISITION	\$ -	\$ -	\$ -	\$ -	\$ -	\$ -	\$ -	\$ -	\$ -	\$ -
2. PLANS	\$ -	\$ -	\$ -	\$ -	\$ -	\$ -	\$ -	\$ -	\$ -	\$ -
3. WORKING DRAWINGS	\$ 185,950	\$ -	\$ -	\$ 185,950	\$ 130,950	\$ 55,000	\$ 185,950	\$ 24,188	\$ 106,762	\$ 55,000
4. CONSTRUCTION	\$ 2,587,818	\$ -	\$ -	\$ 2,587,818	\$ 2,480	\$ 2,585,338	\$ 2,587,818	\$ 2,480	\$ -	\$ 2,585,338
5. CONTINGENCY	\$ 430,352	\$ -	\$ -	\$ 430,352	\$ -	\$ 430,352	\$ 430,352	\$ -	\$ -	\$ 430,352
6. ARCHITECTURAL AND ENGINEERING OVERSIGHT	\$ 21,050	\$ -	\$ -	\$ 21,050	\$ 21,050	\$ -	\$ 21,050	\$ -	\$ 21,050	\$ -
7. TESTS AND INSPECTIONS	\$ 85,398	\$ -	\$ -	\$ 85,398	\$ 9,300	\$ 76,098	\$ 85,398	\$ -	\$ 9,300	\$ 76,098
8. CONSTRUCTION MANAGEMENT	\$ -	\$ -	\$ -	\$ -	\$ -	\$ -	\$ -	\$ -	\$ -	\$ -
9. TOTAL CONSTRUCTION COSTS (4 THRU 8 ABOVE)	\$ 3,124,618	\$ -	\$ -	\$ 3,124,618	\$ 32,830	\$ 3,091,788	\$ 3,124,618	\$ 2,480	\$ 30,350	\$ 3,091,788
10. FURNITURE AND GROUP II EQUIPMENT	\$ 1,689,432	\$ -	\$ -	\$ 1,689,432	\$ 1,689,432	\$ -	\$ 1,689,432	\$ -	\$ 1,689,432	\$ -
11. TOTAL PROJECT COST	\$ 5,000,000	\$ -	\$ -	\$ 5,000,000	\$ 1,853,212	\$ 3,146,788	\$ 5,000,000	\$ 26,668	\$ 1,826,544	\$ 3,146,788

Issues and Concerns

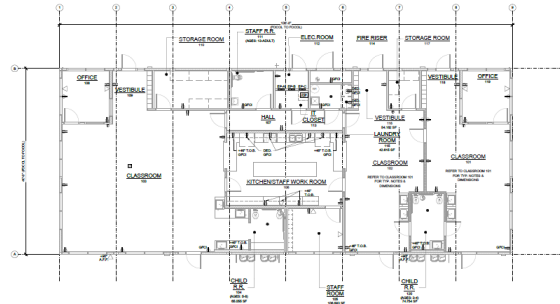
1. No issues or concerns at this time.

Next 90 Days

1. Complete Construction Document Phase.
2. DSA Submittal.
3. DSA Back-check.
4. DSA Approval.



Construction Document Phase - Site Plan



Construction Document Phase - Floor Plan



**Solano Community College
Vacaville Annex Cares Act Upgrade**

A/E: Salas O'Brien

Contractor: TBD

Status: Active



PROJECT SUMMARY

Project: Vacaville Annex Cares Act Upgrade (HVAC/ROOF)

Project Scope:

This project consists of upgrading the indoor ventilation by replacing HVAC equipment, controls, as measures to reduce the spread of infection. The existing roof will also be removed and replaced. The project includes the following components: design and construction.

Project Manager:	Jason Yi/Noe Ramos	Status:	DSA
Original Project Budget:	\$2,000,000	Current Project Budget:	\$2,000,000
Project Start:	September 2021	Project End:	June 2023

Legend	
<input type="checkbox"/>	Not Started
<input type="checkbox"/>	In Progress
<input checked="" type="checkbox"/>	Completed

SCHEDULE

DESCRIPTION	Design			DSA	BID	IN CONST	% Comp.	OCCUPIED	ON SCHED	COMMENTS
	SD	DD	CD							
DSA Review	<input checked="" type="checkbox"/>	<input checked="" type="checkbox"/>	<input checked="" type="checkbox"/>	<input type="checkbox"/>	<input type="checkbox"/>	<input type="checkbox"/>	75%	<input type="checkbox"/>	Yes	

OK

BUDGET

FUNDING SOURCE: Measure Q and Cares Act

JCAF	Amount Budgeted			Total Budget (A)	Encumbered (B)	Forecast to Complete (C)	Forecast at Completion (B+C)	Expenditures to Date (E)	Encumbrance Balance (B-E=F)	Budget Balance (A-B=G)
	Measure Q	State Capital Outlay	Cares Act							
1. SITE ACQUISITION	\$ -	\$ -	\$ -	\$ -	\$ -	\$ -	\$ -	\$ -	\$ -	\$ -
2. PLANS	\$ -	\$ -	\$ -	\$ -	\$ -	\$ -	\$ -	\$ -	\$ -	\$ -
3. WORKING DRAWINGS	\$ 8,350	\$ -	\$ 185,850	\$ 194,200	\$ 185,850	\$ 8,350	\$ 194,200	\$ 84,538	\$ 101,312	\$ 8,350
4. CONSTRUCTION	\$ 876,000	\$ -	\$ 740,136	\$ 1,616,136	\$ -	\$ 1,616,136	\$ 1,616,136	\$ -	\$ -	\$ 1,616,136
5. CONTINGENCY	\$ 87,600	\$ -	\$ 74,014	\$ 161,614	\$ -	\$ 161,614	\$ 161,614	\$ -	\$ -	\$ 161,614
6. ARCHITECTURAL AND ENGINEERING OVERSIGHT	\$ -	\$ -	\$ -	\$ -	\$ -	\$ -	\$ -	\$ -	\$ -	\$ -
7. TESTS AND INSPECTIONS	\$ 28,050	\$ -	\$ -	\$ 28,050	\$ -	\$ 28,050	\$ 28,050	\$ -	\$ -	\$ 28,050
8. CONSTRUCTION MANAGEMENT	\$ -	\$ -	\$ -	\$ -	\$ -	\$ -	\$ -	\$ -	\$ -	\$ -
9. TOTAL CONSTRUCTION COSTS (4 THRU 8 ABOVE)	\$ 991,650	\$ -	\$ 814,150	\$ 1,805,800	\$ -	\$ 1,805,800	\$ 1,805,800	\$ -	\$ -	\$ 1,805,800
10. FURNITURE AND GROUP II EQUIPMENT	\$ -	\$ -	\$ -	\$ -	\$ -	\$ -	\$ -	\$ -	\$ -	\$ -
TOTAL PROJECT COST	\$ 1,000,000	\$ -	\$ 1,000,000	\$ 2,000,000	\$ 185,850	\$ 1,814,150	\$ 2,000,000	\$ 84,538	\$ 101,312	\$ 1,814,150

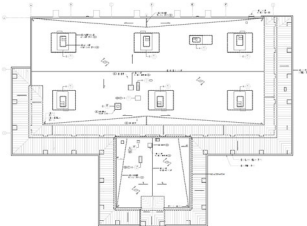
OK

Issues and Concerns

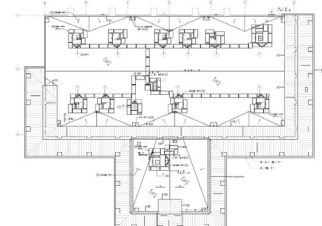
1. None.

Next 90 Days

1. Receive DSA Comments.
2. DSA Approval.
3. Start Bidding Process.



Annex Building - Roof Demo Plan



Annex Building - New Roof Plan



Solano Community College Aeronautics Nut Tree Facility Improvements

A/E: CSW/Stuber-Stroeh

Contractor: Lister Construction Inc.

Status: Active



PROJECT SUMMARY

Project: Aeronautics Nut Tree Facility Improvements

Project Scope:
This project consists of the expansion of the existing parking lot and the installation of a new sewer line connection at the District's hanger at the Nut Tree Airport. The scope includes paving, striping, drainage, and installation of a new sewer line.

Project Manager: Noe Ramos **Status:** Bid Phase

Original Project Budget: \$619,881 **Current Project Budget:** \$619,881

Project Start: September 2019 **Project End:** October 2022

Legend	
<input type="checkbox"/>	Not Started
<input type="checkbox"/>	In Progress
<input checked="" type="checkbox"/>	Completed

SCHEDULE

DESCRIPTION	Design			DSA	BID	IN CONST	% Comp.	OCCUPIED	CLOSE-OUT	ON SCHED	COMMENTS	OK
	SD	DD	CD									
Bid Phase	<input checked="" type="checkbox"/>	<input checked="" type="checkbox"/>	<input checked="" type="checkbox"/>	N/A	<input checked="" type="checkbox"/>	<input type="checkbox"/>	100%	<input type="checkbox"/>	<input type="checkbox"/>	Yes	Bid Phase Complete.	OK

BUDGET

FUNDING SOURCE: Measure Q

JCAF	Amount Budgeted			Total Budget (A)	Encumbered (B)	Forecast to Complete (C)	Forecast at Completion (B+C)	Expenditures to Date (E)	Encumbrance Balance (B-E=F)	Budget Balance (A-B=G)	OK
	Measure Q	State Capital Outlay	Prop 39								
1. SITE ACQUISITION	\$ -	\$ -	\$ -	\$ -	\$ -	\$ -	\$ -	\$ -	\$ -	\$ -	
2. PLANS	\$ 39,827	\$ -	\$ -	\$ 39,827	\$ 39,827	\$ -	\$ 39,827	\$ 32,627	\$ 7,200	\$ -	
3. WORKING DRAWINGS	\$ 50,800	\$ -	\$ -	\$ 50,800	\$ 37,658	\$ 13,142	\$ 50,800	\$ 33,850	\$ 3,808	\$ 13,142	
4. CONSTRUCTION	\$ 461,754	\$ -	\$ -	\$ 461,754	\$ 78,382	\$ 383,372	\$ 461,754	\$ 78,382	\$ -	\$ 383,372	OK
5. CONTINGENCY	\$ 35,500	\$ -	\$ -	\$ 35,500	\$ -	\$ 35,500	\$ 35,500	\$ -	\$ -	\$ 35,500	
6. ARCHITECTURAL AND ENGINEERING OVERSIGHT	\$ 14,000	\$ -	\$ -	\$ 14,000	\$ -	\$ 14,000	\$ 14,000	\$ -	\$ -	\$ 14,000	
7. TESTS AND INSPECTIONS	\$ 18,000	\$ -	\$ -	\$ 18,000	\$ -	\$ 18,000	\$ 18,000	\$ -	\$ -	\$ 18,000	
8. CONSTRUCTION MANAGEMENT	\$ -	\$ -	\$ -	\$ -	\$ -	\$ -	\$ -	\$ -	\$ -	\$ -	
9. TOTAL CONSTRUCTION COSTS (4 THRU 8 ABOVE)	\$ 529,254	\$ -	\$ -	\$ 529,254	\$ 78,382	\$ 450,872	\$ 529,254	\$ 78,382	\$ -	\$ 450,872	
10. FURNITURE AND GROUP II EQUIPMENT	\$ -	\$ -	\$ -	\$ -	\$ -	\$ -	\$ -	\$ -	\$ -	\$ -	
11. TOTAL PROJECT COST	\$ 619,881	\$ -	\$ -	\$ 619,881	\$ 155,868	\$ 464,013	\$ 619,881	\$ 144,860	\$ 11,008	\$ 464,013	

Issues and Concerns

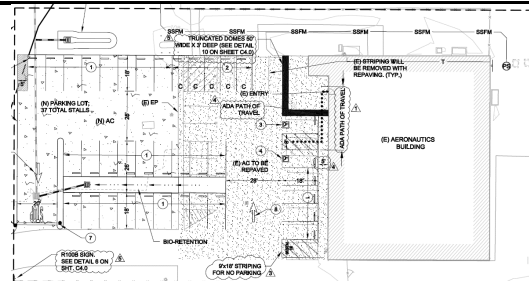
1. No issues or concerns at this time.

Next 90 Days

1. Receive approval from Solano County Building Department, prior to Construction.
2. Start Construction Phase with Lister Construction Inc.
5. Complete PG&E Construction Portion.
4. Complete Construction, start project Closeout.



Project Location - Nut Tree Airport



Project Site Plan



Solano Community College IT Infrastructure Improvements (Phase 2)

A/E: N/A

Contractor: N/A

Status: Active



PROJECT SUMMARY

Project: IT Infrastructure Improvements

Project Scope:

IT Infrastructure Improvements project is a District wide technology infrastructure project intended to provide necessary network, communication systems, desktop services and equipment improvements in support of instructional, student support and office spaces. The project includes the following components: planning, assessment, surveys, design and construction; IT and security equipment procurement; and project/construction management.

Project Manager:	James (Kimo) Caillan	Status:	Active
Total Project Budget:	\$14,200,000	Current Ph 2 Project Budget:	\$2,689,020
Original Ph 2 Project Budget:	\$2,489,000		
Project Start:	May 2017	Project End (Phase 2):	June 2022

Legend
<input type="checkbox"/> Not Started
<input type="checkbox"/> In Progress
<input checked="" type="checkbox"/> Completed

SCHEDULE

DESCRIPTION	Design			DSA	BID	IN CONST	% Comp.	OCCUPIED	CLOSE-OUT	ON SCHED	COMMENTS
	SD	DD	CD								
Procurement and Installation	<input type="checkbox"/>	<input type="checkbox"/>	<input type="checkbox"/>	<input type="checkbox"/>	<input type="checkbox"/>	<input type="checkbox"/>	99%	<input type="checkbox"/>	<input type="checkbox"/>	Yes	In various phases across all different procurements.

OK

BUDGET

FUNDING SOURCE: Measure Q

JCAF	Amount Budgeted			Total Budget (A)	Encumbered (B)	Forecast to Complete (C)	Forecast at Completion (B+C)	Expenditures to Date (E)	Encumbrance Balance (B-E=F)	Budget Balance (A-B=G)
	Measure Q	State Capital Outlay	Prop 39							
1. Classroom Tech Upgrades	\$ 1,090,288	\$ -	\$ -	\$ 1,090,288	\$ 1,084,863	\$ 5,424	\$ 1,090,288	\$ 1,084,863	\$ -	\$ 5,424
2. Computer Lab Computer Replacement (CLOSED)	\$ 75,273	\$ -	\$ -	\$ 75,273	\$ 75,273	\$ -	\$ 75,273	\$ 75,273	\$ -	\$ -
3. Faculty/Staff/Student Computer Replacement	\$ 257,753	\$ -	\$ -	\$ 257,753	\$ 257,753	\$ -	\$ 257,753	\$ 257,753	\$ -	\$ -
4. Student Laptop Replacement (CLOSED)	\$ 67,526	\$ -	\$ -	\$ 67,526	\$ 67,526	\$ -	\$ 67,526	\$ 67,526	\$ -	\$ -
5. Building 100 Generator (CLOSED)	\$ 490,321	\$ -	\$ -	\$ 490,321	\$ 490,321	\$ -	\$ 490,321	\$ 490,321	\$ -	\$ -
6. Security Camera System Upgrade	\$ 10,509	\$ -	\$ -	\$ 10,509	\$ 10,509	\$ -	\$ 10,509	\$ 10,509	\$ -	\$ -
7. Security Camera Replacement Program	\$ 8,496	\$ -	\$ -	\$ 8,496	\$ 8,496	\$ -	\$ 8,496	\$ 8,496	\$ -	\$ -
8. Annual Network Upgrades	\$ 403,784	\$ -	\$ -	\$ 403,784	\$ 403,784	\$ -	\$ 403,784	\$ 403,784	\$ -	\$ -
9. Printer & Copier Replacement	\$ 65,249	\$ -	\$ -	\$ 65,249	\$ 65,249	\$ -	\$ 65,249	\$ 65,249	\$ -	\$ -
10. Email System Upgrade	\$ 110,641	\$ -	\$ -	\$ 110,641	\$ 110,641	\$ -	\$ 110,641	\$ 110,641	\$ -	\$ -
11. Vacaville (Annex) Technology Upgrade	\$ 109,181	\$ -	\$ -	\$ 109,181	\$ 109,181	\$ -	\$ 109,181	\$ 109,181	\$ -	\$ -
11. TOTAL PROJECT COST	\$ 2,689,020	\$ -	\$ -	\$ 2,689,020	\$ 2,683,595	\$ 5,424	\$ 2,689,020	\$ 2,683,595	\$ -	\$ 5,424

OK

Issues and Concerns

1. No issues or concerns at this time.

Next 90 Days

1. Continue technology upgrades and improvements.



**Solano Community College
IT Infrastructure Improvements (Phase 3)**

A/E: N/A

Contractor: N/A

Status: Active



PROJECT SUMMARY

Project: IT Infrastructure Improvements

Project Scope:

IT Infrastructure Improvements project is a District wide technology infrastructure project intended to provide necessary network, communication systems, desktop services and equipment improvements in support of instructional, student support and office spaces. The project includes the following components: planning, assessment, surveys, design and construction; IT and security equipment procurement; and project/construction management.

Project Manager: James (Kimo) Callian **Status:** Active
Total Project Budget: \$14,200,000
Original Ph 3 Project Budget: \$1,700,000 **Current Ph 3 Project Budget:** \$1,700,000
Project Start: March 2021 **Project End (Phase 3):** November 2023

Legend	
<input type="checkbox"/>	Not Started
<input type="checkbox"/>	In Progress
<input checked="" type="checkbox"/>	Completed

SCHEDULE

DESCRIPTION	Design			DSA	BID	IN CONST	% Comp.	OCCUPIED	CLOSE-OUT	ON SCHED	COMMENTS
	SD	DD	CD								
Procurement and Installation	<input type="checkbox"/>	<input type="checkbox"/>	<input type="checkbox"/>	<input type="checkbox"/>	<input type="checkbox"/>	<input type="checkbox"/>	15%	<input type="checkbox"/>	<input type="checkbox"/>	Yes	In various phases across all different procurements.

BUDGET

FUNDING SOURCE: Measure Q

JCAF	Amount Budgeted			Total Budget (A)	Encumbered (B)	Forecast to Complete (C)	Forecast at Completion (B+C)	Expenditures to Date (E)	Encumbrance Balance (B-E=F)	Budget Balance (A-B=G)
	Measure Q	State Capital Outlay	Prop 39							
1. Classroom Tech Upgrades	\$ 384,000	\$ -	\$ -	\$ 384,000	\$ 112,912	\$ 271,088	\$ 384,000	\$ 107,559	\$ 5,353	\$ 271,088
2. Faculty/Staff/Student Computer Replacement	\$ 345,000	\$ -	\$ -	\$ 345,000	\$ 306,375	\$ 38,625	\$ 345,000	\$ 102,035	\$ 204,340	\$ 38,625
3. Security Camera System Upgrade	\$ 150,000	\$ -	\$ -	\$ 150,000		\$ 150,000	\$ 150,000	\$ -	\$ -	\$ 150,000
4. Annual Network Upgrades	\$ 445,000	\$ -	\$ -	\$ 445,000		\$ 445,000	\$ 445,000	\$ -	\$ -	\$ 445,000
5. Printer & Copier Replacement	\$ 50,000	\$ -	\$ -	\$ 50,000	\$ 48,392	\$ 1,608.48	\$ 50,000	\$ 12,783	\$ 35,608	\$ 1,608
6. Safety and Data Security Upgrade	\$ 326,000	\$ -	\$ -	\$ 326,000		\$ 326,000	\$ 326,000	\$ -	\$ -	\$ 326,000
11. TOTAL PROJECT COST	\$ 1,700,000	\$ -	\$ -	\$ 1,700,000	\$ 467,678	\$ 1,232,322	\$ 1,700,000	\$ 222,377	\$ 245,301	\$ 1,232,322

Issues and Concerns

1. No issues or concerns at this time.

Next 90 Days

1. Continue classroom and other technology upgrades.
2. Copier and computer upgrades.



Solano Community College Infrastructure Improvements - Solar Energy

A/E: Optyon Inc.

Contractor: TBD

Status: Active



PROJECT SUMMARY

Project: Infrastructure Improvements - Solar Energy			
Project Scope: The Solar Energy Project is to add solar production to the District's Fairfield Campus with the application of solar photovoltaic arrays. The project goal is to completely offset current energy consumption with the potential of over production (up to 5 megawatts) for the Fairfield Campus. The project includes the following components: feasibility study, assessment, planning, design, construction, and operations/maintenance.			
Project Manager: Noe Ramos		Status: RFQ/P Phase	
Original Project Budget: \$13,000,000		Current Project Budget: \$10,500,000	
Project Start: April 2021		Project End: July 2023	

Legend
<input type="checkbox"/> Not Started
<input type="checkbox"/> In Progress
<input checked="" type="checkbox"/> Completed

SCHEDULE

DESCRIPTION	Design			DSA	BID	IN CONST	% Comp.	OCCUPIED	CLOSE-OUT	ON SCHED	COMMENTS
	SD	DD	CD								
RFQ/P Phase	<input type="checkbox"/>	<input type="checkbox"/>	<input type="checkbox"/>	<input type="checkbox"/>	<input type="checkbox"/>	<input type="checkbox"/>	90%	<input type="checkbox"/>	<input type="checkbox"/>	Yes	Contract Negotiations.

OK

BUDGET

FUNDING SOURCE: Measure Q

JCAF	Amount Budgeted			Total Budget (A)	Encumbered (B)	Forecast to Complete (C)	Forecast at Completion (B+C)	Expenditures to Date (E)	Encumbrance Balance (B-E=F)	Budget Balance (A-B=G)
	Measure Q	State Capital Outlay	Prop 39							
1. SITE ACQUISITION	\$ -	\$ -	\$ -	\$ -	\$ -	\$ -	\$ -	\$ -	\$ -	\$ -
2. PLANS	\$ 269,875	\$ -	\$ -	\$ 269,875	\$ 15,875	\$ 254,000	\$ 269,875	\$ 15,875	\$ -	\$ 254,000
3. WORKING DRAWINGS	\$ 483,825	\$ -	\$ -	\$ 483,825	\$ 86,425	\$ 397,400	\$ 483,825	\$ 35,074	\$ 51,351	\$ 397,400
4. CONSTRUCTION	\$ 7,875,000	\$ -	\$ -	\$ 7,875,000	\$ -	\$ 7,875,000	\$ 7,875,000	\$ -	\$ -	\$ 7,875,000
5. CONTINGENCY	\$ 1,347,219	\$ -	\$ -	\$ 1,347,219	\$ -	\$ 1,347,219	\$ 1,347,219	\$ -	\$ -	\$ 1,347,219
6. ARCHITECTURAL AND ENGINEERING OVERSIGHT	\$ 264,206	\$ -	\$ -	\$ 264,206	\$ 47,400	\$ 216,806	\$ 264,206	\$ -	\$ 47,400	\$ 216,806
7. TESTS AND INSPECTIONS	\$ 259,875	\$ -	\$ -	\$ 259,875	\$ -	\$ 259,875	\$ 259,875	\$ -	\$ -	\$ 259,875
8. CONSTRUCTION MANAGEMENT	\$ -	\$ -	\$ -	\$ -	\$ -	\$ -	\$ -	\$ -	\$ -	\$ -
9. TOTAL CONSTRUCTION COSTS (4 THRU 8 ABOVE)	\$ 9,746,300	\$ -	\$ -	\$ 9,746,300	\$ 47,400	\$ 9,698,900	\$ 9,746,300	\$ -	\$ 47,400	\$ 9,698,900
10. FURNITURE AND GROUP II EQUIPMENT	\$ -	\$ -	\$ -	\$ -	\$ -	\$ -	\$ -	\$ -	\$ -	\$ -
11. TOTAL PROJECT COST	\$ 10,500,000	\$ -	\$ -	\$ 10,500,000	\$ 149,700	\$ 10,350,300	\$ 10,500,000	\$ 50,949	\$ 98,751	\$ 10,350,300

OK

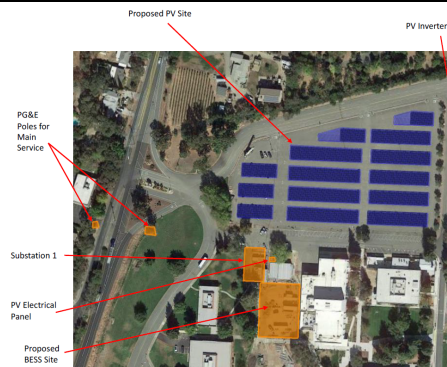
Issues and Concerns

- Current market conditions are causing dramatic shifts in costs of solar components.

Next 90 Days

- Select Design-Build Team.
- Contract Negotiations.
- Board Approval of Solar Project Design-Build Team.

No Photo Available



Proposed PV and BESS Locations



Solano Community College Small Capital Projects Phase 1 - Other

A/E: N/A

Contractor: N/A

Status: Active



PROJECT SUMMARY

Project: Small Capital Projects Phase 1 - Other

Project Scope:

Small Capital Projects is a project consisting of smaller scale projects intended to provide necessary instructional, student support and office space improvements District wide. This summary sheet is to capture expenditures for mini-scale projects with expenditures less than \$59,160 or very close to this dollar amount. [Beginning January 1, 2021, the dollar limit was increased from \$58,242 to \$59,160 to remain aligned with the annual adjustments routinely made in accordance with P.C.C. (Public Contract Code) policies and processes. In the future, this dollar adjustment will be made when it is made for P.C.C. projects.]

Project Manager: Various **Status:** Active

Original Project Budget: \$200,000 **Current Project Budget:** \$650,000

Project Start: January 2014 **Project End:** August 2023

Legend	
<input type="checkbox"/>	Not Started
<input type="checkbox"/>	In Progress
<input checked="" type="checkbox"/>	Completed

SCHEDULE

DESCRIPTION	Design				DSA	BID	IN CONST	% Comp.	OCCUPIED	CLOSE-OUT	ON SCHED	COMMENTS
	SD	DD	CD									
Small scale projects, part of the Small Capital Projects overall scope and budget.	<input type="checkbox"/>	<input type="checkbox"/>	<input type="checkbox"/>	<input type="checkbox"/>	<input type="checkbox"/>	<input type="checkbox"/>	NA	<input type="checkbox"/>	<input type="checkbox"/>	Yes	These small projects move quickly through the project delivery process. At any one time, there will be projects in most phases.	OK

Expenditures

FUNDING SOURCE: Measure Q

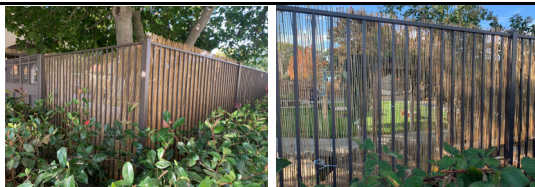
Projects	Amount Budgeted			Total Budget (A)	Encumbered (B)	Forecast to Complete (C)	Forecast at Completion (B+C)	Expenditures to Date (E)	Encumbrance Balance (B-E=F)	Budget Balance (A-B=G)
	Measure Q	State Capital Outlay	Prop 39							
1. B1400 FF&E (CLOSED)	\$ 35,450	\$ -	\$ -	\$ 35,450	\$ 35,450	\$ -	\$ 35,450	\$ 35,450	\$ -	\$ -
2. Vacaville FF&E/Shelving Design & Installation (CLOSED)	\$ 6,930	\$ -	\$ -	\$ 6,930	\$ 6,930	\$ -	\$ 6,930	\$ 6,930	\$ -	\$ -
3. Baseball Field (CLOSED)	\$ 5,303	\$ -	\$ -	\$ 5,303	\$ 5,303	\$ -	\$ 5,303	\$ 5,303	\$ -	\$ -
4. Vacaville and Vallejo Center Signage (CLOSED)	\$ 11,480	\$ -	\$ -	\$ 11,480	\$ 11,480	\$ -	\$ 11,480	\$ 11,480	\$ -	\$ -
5. Building 100 Data Center (CLOSED)	\$ 5,000	\$ -	\$ -	\$ 5,000	\$ 5,000	\$ -	\$ 5,000	\$ 5,000	\$ -	\$ -
6. Child Development FF&E (CLOSED)	\$ 1,988	\$ -	\$ -	\$ 1,988	\$ 1,988	\$ -	\$ 1,988	\$ 1,988	\$ -	\$ -
7. Building 300 Feasibility Study (CLOSED)	\$ 23,445	\$ -	\$ -	\$ 23,445	\$ 23,445	\$ -	\$ 23,445	\$ 23,445	\$ -	\$ -
8. Building 1600 Classroom Improvements (CLOSED)	\$ 38,189	\$ -	\$ -	\$ 38,189	\$ 38,189	\$ -	\$ 38,189	\$ 38,189	\$ -	\$ -
9. Building 1800 Classroom Improvements (CLOSED)	\$ 32,670	\$ -	\$ -	\$ 32,670	\$ 32,670	\$ -	\$ 32,670	\$ 32,670	\$ -	\$ -
10. Building 300 Feasibility Study (CLOSED)	\$ 23,445	\$ -	\$ -	\$ 23,445	\$ 23,445	\$ -	\$ 23,445	\$ 23,445	\$ -	\$ -
11. Building 1300 Kiln (CLOSED)	\$ 44,408	\$ -	\$ -	\$ 44,408	\$ 44,408	\$ -	\$ 44,408	\$ 44,408	\$ -	\$ -
12. Building 1800 Mechatronics Presentation Walls (CLOSED)	\$ 51,947	\$ -	\$ -	\$ 51,947	\$ 51,947	\$ -	\$ 51,947	\$ 51,947	\$ -	\$ -
13. Building 1400 Food Service Area Assessment (CLOSED)	\$ 18,800	\$ -	\$ -	\$ 18,800	\$ 18,800	\$ -	\$ 18,800	\$ 18,800	\$ -	\$ -
14. Asbestos Abatement (B100, B1900) (CLOSED)	\$ 26,980	\$ -	\$ -	\$ 26,980	\$ 26,980	\$ -	\$ 26,980	\$ 26,980	\$ -	\$ -
15. Site Lighting Improvements (FF) (Alternate) (CLOSED)	\$ 35,350	\$ -	\$ -	\$ 35,350	\$ 35,350	\$ -	\$ 35,350	\$ 35,350	\$ -	\$ -
16. Building 100 Lobby Tables, Electrical & Lighting (CLOSED)	\$ 19,300	\$ -	\$ -	\$ 19,300	\$ 19,300	\$ -	\$ 19,300	\$ 19,300	\$ -	\$ -
17. FF Campus Entry Sidewalk Improvements-Design (CLOSED)	\$ 36,358	\$ -	\$ -	\$ 36,358	\$ 36,358	\$ -	\$ 36,358	\$ 36,358	\$ -	\$ -
18. Glides for New Classroom Furniture (CLOSED)	\$ 4,780	\$ -	\$ -	\$ 4,780	\$ 4,780	\$ -	\$ 4,780	\$ 4,780	\$ -	\$ -
19. Swing Space Portables (CLOSED)	\$ 6,707	\$ -	\$ -	\$ 6,707	\$ 6,707	\$ -	\$ 6,707	\$ 6,707	\$ -	\$ -
20. Hydronic Pump Insulation (CLOSED)	\$ 11,975	\$ -	\$ -	\$ 11,975	\$ 11,975	\$ -	\$ 11,975	\$ 11,975	\$ -	\$ -
21. Fire Alarm Panel Connectors (CLOSED)	\$ 5,554	\$ -	\$ -	\$ 5,554	\$ 5,554	\$ -	\$ 5,554	\$ 5,554	\$ -	\$ -
22. Fairfield Campus Directories (CLOSED)	\$ 65,453	\$ -	\$ -	\$ 65,453	\$ 65,453	\$ -	\$ 65,453	\$ 65,453	\$ -	\$ -
23. B100 Lobby Tables (CLOSED)	\$ 7,866	\$ -	\$ -	\$ 7,866	\$ 7,866	\$ -	\$ 7,866	\$ 7,866	\$ -	\$ -
24. Bench for Campus Entry Internment (CLOSED)	\$ 1,915	\$ -	\$ -	\$ 1,915	\$ 1,915	\$ -	\$ 1,915	\$ 1,915	\$ -	\$ -
25. Building 200 Entry Tower Fascia Replacement (CLOSED)	\$ 11,400	\$ -	\$ -	\$ 11,400	\$ 11,400	\$ -	\$ 11,400	\$ 11,400	\$ -	\$ -
26. Building 200 Fence Painting (CLOSED)	\$ 36,000	\$ -	\$ -	\$ 36,000	\$ 36,000	\$ -	\$ 36,000	\$ 36,000	\$ -	\$ -
27. Belvedere Fence	\$ 52,525	\$ -	\$ -	\$ 52,525	\$ 13,012	\$ 39,513	\$ 52,525	\$ 12,885	\$ 127	\$ 39,513
11. TOTAL PROJECT COST	\$ 621,219	\$ -	\$ -	\$ 621,219	\$ 581,706	\$ 39,513	\$ 621,219	\$ 581,579	\$ 127	\$ 39,513

Issues and Concerns

1. No issues or concerns at this time.

Next 90 Days

1. Belvedere Property Fence: Complete property line survey, discuss findings with HOA and bid fence work.



B200: Fencing Repainting



B200: Fascia Repair



Solano Community College Small Capital Projects Phase 2 - Other

A/E: Various

Contractor: Various

Status: Active



PROJECT SUMMARY

Project: Small Capital Projects - Other

Project Scope:
Small Capital Projects is a project consisting of smaller scale projects intended to provide necessary instructional, student support and office space improvements District wide. This summary sheet is to capture expenditures for mini-scale projects with expenditures less than \$59,160 or very close to this dollar amount. (Beginning January 1, 2021, the dollar limit was increased from \$58,242 to \$59,160 to remain aligned with the annual adjustments routinely made in accordance with P.C.C. (Public Contract Code) policies and processes. In the future, this dollar adjustment will be made when it is made for P.C.C. projects.]

Project Manager: Jason Yi/Noe Ramos	Status: Active
Original Project Budget: \$50,000	Current Project Budget: \$1,000,000
Project Start: July 2018	Project End: December 2023

Legend	
<input type="checkbox"/>	Not Started
<input type="checkbox"/>	In Progress
<input checked="" type="checkbox"/>	Completed

SCHEDULE

DESCRIPTION	Design			DSA	BID	IN CONST	% Comp.	OCCUPIED	CLOSE-OUT	ON SCHED	COMMENTS
	SD	DD	CD								
Small scale projects, part of the Small Capital Projects overall scope and budget.	<input type="checkbox"/>	<input type="checkbox"/>	<input type="checkbox"/>	<input type="checkbox"/>	<input type="checkbox"/>	<input type="checkbox"/>	NA	<input type="checkbox"/>	<input type="checkbox"/>	Yes	These small projects move quickly through the project delivery process. At any one time, there will be projects in most phases.

OK

Expenditures

FUNDING SOURCE: Measure Q

Projects	Amount Budgeted			Total Budget (A)	Encumbered (B)	Forecast to Complete (C)	Forecast at Completion (B+C)	Expenditures to Date (E)	Encumbrance Balance (B-E=F)	Budget Balance (A-B=G)
	Measure Q	State Capital Outlay	Prop 39							
1. Upgrade HVAC System VV and VJ - Design (Closed)	\$ 2,400	\$ -	\$ -	\$ 2,400	\$ 2,400	\$ -	\$ 2,400	\$ 2,400	\$ -	\$ -
2. Autotech Acoustic Study (Closed)	\$ 14,380	\$ -	\$ -	\$ 14,380	\$ 14,380	\$ -	\$ 14,380	\$ 14,380	\$ -	\$ -
3. Building 1200 Signage (Closed)	\$ 8,180	\$ -	\$ -	\$ 8,180	\$ 8,180	\$ -	\$ 8,180	\$ 8,180	\$ -	\$ -
4. Portables Low Voltage Revisions (Closed)	\$ 27,745	\$ -	\$ -	\$ 27,745	\$ 27,745	\$ -	\$ 27,745	\$ 27,745	\$ -	\$ -
5. Building 300 Exterior Signage (Closed)	\$ 3,037	\$ -	\$ -	\$ 3,037	\$ 3,037	\$ -	\$ 3,037	\$ 3,037	\$ -	\$ -
6. Building 1800B Print Shop (Closed)	\$ 30,720	\$ -	\$ -	\$ 30,720	\$ 30,720	\$ -	\$ 30,720	\$ 30,720	\$ -	\$ -
7. Childcare Building 200A Repair (Closed)	\$ 24,631	\$ -	\$ -	\$ 24,631	\$ 24,631	\$ -	\$ 24,631	\$ 24,631	\$ -	\$ -
8. Biotech Casework Improvement (Closed)	\$ 30,500	\$ -	\$ -	\$ 30,500	\$ 30,500	\$ -	\$ 30,500	\$ 30,500	\$ -	\$ -
9. Pedestrian & Vehicle Wayfinding Signs (Design) (Closed)	\$ 1,131	\$ -	\$ -	\$ 1,131	\$ 1,131	\$ -	\$ 1,131	\$ 1,131	\$ -	\$ -
10. Autotech Dyno Room Reconfiguration (Closed)	\$ 45,794	\$ -	\$ -	\$ 45,794	\$ 45,794	\$ -	\$ 45,794	\$ 45,794	\$ -	\$ -
11. Room 1315 Countertop Replacement (Closed)	\$ 14,000	\$ -	\$ -	\$ 14,000	\$ 14,000	\$ -	\$ 14,000	\$ 14,000	\$ -	\$ -
12. Building 1900 Administration Office Renovation (Closed)	\$ 38,671	\$ -	\$ -	\$ 38,671	\$ 38,671	\$ -	\$ 38,671	\$ 38,671	\$ -	\$ -
13. Early Learning Center Modernization (Design) (Closed)	\$ 12,500	\$ -	\$ -	\$ 12,500	\$ 12,500	\$ -	\$ 12,500	\$ 12,500	\$ -	\$ -
14. Portable Relocation (Closed)	\$ 13,534	\$ -	\$ -	\$ 13,534	\$ 13,534	\$ -	\$ 13,534	\$ 13,534	\$ -	\$ -
15. B1500 Corridor Painting (Closed)	\$ 7,187	\$ -	\$ -	\$ 7,187	\$ 7,187	\$ -	\$ 7,187	\$ 7,187	\$ -	\$ -
16. Pool Deck Repair (Closed)	\$ 6,000	\$ -	\$ -	\$ 6,000	\$ 6,000	\$ -	\$ 6,000	\$ 6,000	\$ -	\$ -
17. B800 Wall Paper Repair (Closed)	\$ 2,485	\$ -	\$ -	\$ 2,485	\$ 2,485	\$ -	\$ 2,485	\$ 2,485	\$ -	\$ -
18. Parking Lot 6 Seal Coat (Closed)	\$ 12,137	\$ -	\$ -	\$ 12,137	\$ 12,137	\$ -	\$ 12,137	\$ 12,137	\$ -	\$ -
19. Pool Cover Replacement (Closed)	\$ 9,234	\$ -	\$ -	\$ 9,234	\$ 9,234	\$ -	\$ 9,234	\$ 9,234	\$ -	\$ -
20. Building 1900 Trench Drain (Closed)	\$ 29,145	\$ -	\$ -	\$ 29,145	\$ 29,145	\$ -	\$ 29,145	\$ 29,145	\$ -	\$ -
21. Fairfield Campus Perimeter Road Striping (Closed)	\$ 55,060	\$ -	\$ -	\$ 55,060	\$ 55,060	\$ -	\$ 55,060	\$ 55,060	\$ -	\$ -
22. B1600 Cosmetology Improvement (Closed)	\$ 24,790	\$ -	\$ -	\$ 24,790	\$ 24,790	\$ -	\$ 24,790	\$ 24,790	\$ -	\$ -
23. Room 808 Repairs (Closed)	\$ 6,230	\$ -	\$ -	\$ 6,230	\$ 6,230	\$ -	\$ 6,230	\$ 6,230	\$ -	\$ -
24. Vallejo Center Drinking Fountain and Water Line (Closed)	\$ 6,000	\$ -	\$ -	\$ 6,000	\$ 6,000	\$ -	\$ 6,000	\$ 6,000	\$ -	\$ -
25. Vacaville Center Storage Enclosure (Closed)	\$ 27,787	\$ -	\$ -	\$ 27,787	\$ 27,787	\$ -	\$ 27,787	\$ 27,787	\$ -	\$ -
26. Chiller #3 Circuit Breaker Replacement (Closed)	\$ 7,368	\$ -	\$ -	\$ 7,368	\$ 7,368	\$ -	\$ 7,368	\$ 7,368	\$ -	\$ -
27. FF Sprinkler System Upgrade (Closed)	\$ 30,054	\$ -	\$ -	\$ 30,054	\$ 30,054	\$ -	\$ 30,054	\$ 30,054	\$ -	\$ -
28. Building 300 HVAC Assessment (Closed)	\$ 29,540	\$ -	\$ -	\$ 29,540	\$ 29,540	\$ -	\$ 29,540	\$ 29,540	\$ -	\$ -
29. Building 400 Lighting Replacement (Closed)	\$ 29,400	\$ -	\$ -	\$ 29,400	\$ 29,400	\$ -	\$ 29,400	\$ 29,400	\$ -	\$ -
30. Central Plant Cooling Tower Platform Repair (Closed)	\$ 22,327	\$ -	\$ -	\$ 22,327	\$ 22,327	\$ -	\$ 22,327	\$ 22,327	\$ -	\$ -
31. Central Plant Valve Actuators Repair (Closed)	\$ 31,372	\$ -	\$ -	\$ 31,372	\$ 31,372	\$ -	\$ 31,372	\$ 31,372	\$ -	\$ -
32. B1800A Heating Hot Water Piping Repair (Closed)	\$ 9,500	\$ -	\$ -	\$ 9,500	\$ 9,500	\$ -	\$ 9,500	\$ 9,500	\$ -	\$ -
33. Science Building Improvements (Closed)	\$ 11,241	\$ -	\$ -	\$ 11,241	\$ 11,241	\$ -	\$ 11,241	\$ 11,241	\$ -	\$ -
34. FF Campus Pool and Equipment Study	\$ 32,555	\$ -	\$ -	\$ 32,555	\$ 32,555	\$ -	\$ 32,555	\$ 11,945	\$ 20,610	\$ -
35. FF Campus Substation #3 Study	\$ 34,240	\$ -	\$ -	\$ 34,240	\$ 34,240	\$ -	\$ 34,240	\$ 25,473	\$ 8,768	\$ -
36. Building 2700 Lab Controls (Closed)	\$ 59,000	\$ -	\$ -	\$ 59,000	\$ 59,000	\$ -	\$ 59,000	\$ 59,000	\$ -	\$ -
37. FF Campus Door Hardware Installation	\$ 55,940	\$ -	\$ -	\$ 55,940	\$ 55,940	\$ -	\$ 55,940	\$ -	\$ 55,940	\$ -
38. Vallejo Autotech Vehicle Security	\$ 49,520	\$ -	\$ -	\$ 49,520	\$ 49,520	\$ -	\$ 49,520	\$ 23,522	\$ 25,998	\$ -
11. TOTAL PROJECT COST	\$ 855,334	\$ -	\$ -	\$ 855,334	\$ 855,334	\$ -	\$ 855,334	\$ 744,019	\$ 111,315	\$ -

OK

Issues and Concerns

1. No issues or concerns at this time.

Next 90 Days

1. Continue work on various small projects. Due to scale and quickness of project completion, status update details are not generally provided on many of these very minor projects.



Solano Community College Small Capital Projects - Baseball and Softball Clubhouse Replacement

A/E: HMR Architects

Contractor: Arthulia Inc.

Status: Active



PROJECT SUMMARY

Project: Small Capital Projects - Baseball and Softball Clubhouse Replacement

Project Scope:

The Baseball and Softball Clubhouse Replacement Project consists of the replacement of the existing clubhouses used by the Baseball and Softball programs with Division of State Architect (DSA) approved modular buildings. The project will include the following components: planning, design and construction.

Project Manager: Noe Ramos

Status: Construction Phase

Original Project Budget: \$600,000

Current Project Budget: \$860,000

Project Start: July 2019

Project End: December 2022

Legend	
<input type="checkbox"/>	Not Started
<input type="checkbox"/>	In Progress
<input checked="" type="checkbox"/>	Completed

SCHEDULE

DESCRIPTION	Design			DSA	BID	IN CONST	% Comp.	OCCUPIED	CLOSE-OUT	ON SCHED	COMMENTS
	SD	DD	CD								
Construction Phase	<input checked="" type="checkbox"/>	<input checked="" type="checkbox"/>	<input checked="" type="checkbox"/>	<input checked="" type="checkbox"/>	<input checked="" type="checkbox"/>	<input checked="" type="checkbox"/>	10%	<input type="checkbox"/>	<input type="checkbox"/>	Yes	

BUDGET

FUNDING SOURCE: Measure Q

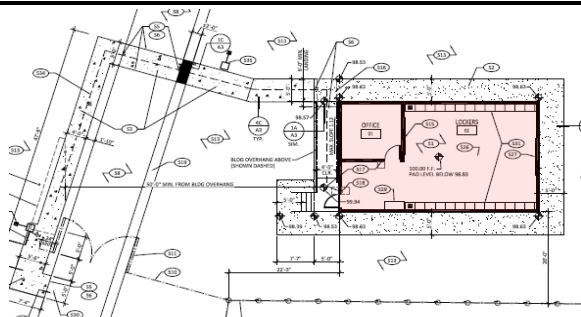
JCAF	Amount Budgeted			Total Budget (A)	Encumbered (B)	Forecast to Complete (C)	Forecast at Completion (B+C)	Expenditures to Date (E)	Encumbrance Balance (B-E=F)	Budget Balance (A-B=G)
	Measure Q	State Capital Outlay	Prop 39							
1. SITE ACQUISITION	\$ -	\$ -	\$ -	\$ -	\$ -	\$ -	\$ -	\$ -	\$ -	\$ -
2. PLANS	\$ -	\$ -	\$ -	\$ -	\$ -	\$ -	\$ -	\$ -	\$ -	\$ -
3. WORKING DRAWINGS	\$ 60,800	\$ -	\$ -	\$ 60,800	\$ 54,049	\$ 6,751	\$ 60,800	\$ 43,853	\$ 10,196	\$ 6,751
4. CONSTRUCTION	\$ 440,000	\$ -	\$ -	\$ 440,000	\$ 344,740	\$ 95,260	\$ 440,000	\$ 12,205	\$ 332,535	\$ 95,260
5. CONTINGENCY	\$ 29,200	\$ -	\$ -	\$ 29,200	\$ -	\$ 29,200	\$ 29,200	\$ -	\$ -	\$ 29,200
6. ARCHITECTURAL AND ENGINEERING OVERSIGHT	\$ -	\$ -	\$ -	\$ -	\$ -	\$ -	\$ -	\$ -	\$ -	\$ -
7. TESTS AND INSPECTIONS	\$ 30,000	\$ -	\$ -	\$ 30,000	\$ 10,300	\$ 19,700	\$ 30,000	\$ -	\$ 10,300	\$ 19,700
8. CONSTRUCTION MANAGEMENT	\$ -	\$ -	\$ -	\$ -	\$ -	\$ -	\$ -	\$ -	\$ -	\$ -
9. TOTAL CONSTRUCTION COSTS (4 THRU 8 ABOVE)	\$ 499,200	\$ -	\$ -	\$ 499,200	\$ 355,040	\$ 144,160	\$ 499,200	\$ 12,205	\$ 342,835	\$ 144,160
10. FURNITURE AND GROUP II EQUIPMENT	\$ 300,000	\$ -	\$ -	\$ 300,000	\$ 272,470	\$ -	\$ 272,470	\$ 179,314	\$ 93,156	\$ 27,530
11. TOTAL PROJECT COST	\$ 860,000	\$ -	\$ -	\$ 860,000	\$ 681,559	\$ 150,911	\$ 832,470	\$ 235,372	\$ 446,187	\$ 178,441

Issues and Concerns

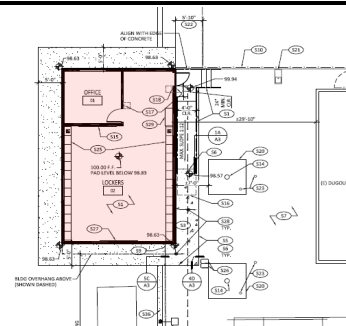
1. No issues or concerns at this time.

Next 90 Days

1. Complete Site Demolition.
2. Complete Site Infrastructure Improvements.
3. Complete Modular Building Installation.



Baseball Clubhouse - Site Plan



Softball Clubhouse - Site Plan



**Solano Community College
Planning, Assessments & Program Management**

Program Manager: Kitchell CEM

Contractor: N/A

Status: Active



PROJECT SUMMARY

Project: Planning, Assessments & Program Management	
Project Scope: This Bond Spending Plan budget category includes District wide Planning, Assessments and Program Management. It is comprised of work associated with overall bond program implementation, including district bond team, program management services, professional services bond (bond counsel, bond performance audit), professional services for bond start-up and District EMP/FMP/Standards/Studies.	Program Manager: Priscilla Meckley Status: Active
	Original Project Budget: \$25,400,000 Current Project Budget: \$48,736,000
	Project Start: July 2013 Project End: December 2032

Legend	
<input type="checkbox"/>	Not Started
<input type="checkbox"/>	In Progress
<input checked="" type="checkbox"/>	Completed

SCHEDULE

DESCRIPTION	Design			DSA	BID	IN CONST	% Comp.	OCCUPIED	CLOSE-OUT	ON SCHED	COMMENTS	OK
	SD	DD	CD									
This project sheet includes budget and expenditure information for the duration of the bond program.	NA	NA	NA	NA	NA	NA	NA	NA	NA	Yes	This project does not have traditional project phases.	OK

Expenditures

FUNDING SOURCE: Measure Q

Categories	Amount Budgeted			Total Budget (A)	Encumbered (B)	Forecast to Complete (C)	Forecast at Completion (B+C)	Expenditures to Date (E)	Encumbrance Balance (B-E=F)	Budget Balance (A-B=G)	OK
	Measure Q	State Capital Outlay	Prop 39								
1. Program Management Consultants	\$ 31,197,888	\$ -	\$ -	\$ 31,197,888	\$ 18,086,513	\$ 13,111,375	\$ 31,197,888	\$ 12,317,480	\$ 5,769,033	\$ 13,111,375	
2. Program Management District Staff	\$ 9,966,054	\$ -	\$ -	\$ 9,966,054	\$ 4,002,348	\$ 5,963,706	\$ 9,966,054	\$ 4,002,348	\$ -	\$ 5,963,706	
3. Professional Services Bond	\$ 3,280,126	\$ -	\$ -	\$ 3,280,126	\$ 1,362,683	\$ 1,917,443	\$ 3,280,126	\$ 1,264,060	\$ 98,623	\$ 1,917,443	
4. Professional Services Bond Start-up (Series A)	\$ 919,350	\$ -	\$ -	\$ 919,350	\$ 919,350	\$ 0	\$ 919,350	\$ 919,350	\$ -	\$ 0	
5. Professional Services Bond Start-up (Series B)	\$ 306,954	\$ -	\$ -	\$ 306,954	\$ 306,954	\$ 0	\$ 306,954	\$ 306,954	\$ -	\$ 0	
6. Professional Services Bond Start-up	\$ 809,717	\$ -	\$ -	\$ 809,717	\$ 550,347	\$ 259,370	\$ 809,717	\$ 550,347	\$ -	\$ 259,370	
7. EMP/FMP/District Standards Bond	\$ 2,255,911	\$ -	\$ -	\$ 2,255,911	\$ 1,691,401	\$ 564,510	\$ 2,255,911	\$ 1,683,665	\$ 7,736	\$ 564,510	
	\$ -	\$ -	\$ -	\$ -	\$ -	\$ -	\$ -	\$ -	\$ -	\$ -	
	\$ -	\$ -	\$ -	\$ -	\$ -	\$ -	\$ -	\$ -	\$ -	\$ -	
	\$ -	\$ -	\$ -	\$ -	\$ -	\$ -	\$ -	\$ -	\$ -	\$ -	
11. TOTAL PROJECT COST	\$ 48,736,000	\$ -	\$ -	\$ 48,736,000	\$ 26,919,596	\$ 21,816,404	\$ 48,736,000	\$ 21,044,205	\$ 5,875,391	\$ 21,816,404	

Issues and Concerns

1. No issues or concerns at this time.

Next 90 Days

- On-going activities of the District bond team, program management team, and consultants to support the Bond program and its projects.
- Continued planning and implementation of the bond spending plan update(s) in response to the adopted 2020 Facilities Master Plan update, and Series D and Series E bond fund issuances.

PROJECTS IN CLOSE OUT



Solano Community College VV Classroom Building 'Annex' Renovation (Phase 2)

A/E: CA Architects

Contractor: McCuen Construction **Status:** Active



(Primary Project)

PROJECT SUMMARY

Project: VV Classroom Building Renovation (Phase 2)

Project Scope:

Vacaville Classroom Building Renovation includes required DSA Certification building upgrades to provide instructional and student support spaces at the Vacaville Center site. The project will include the following components: building purchase, planning, assessments, surveys, design and construction; furniture, fixtures and equipment; project/construction management.

Project Manager: Noe Ramos (Corbels Project)

Status: Financial Closeout

Original Project Budget: \$4,607,681

Current Project Budget: \$3,812,147

Project Start: May 2017

Project End: February 2022

Legend	
<input type="checkbox"/>	Not Started
<input type="checkbox"/>	In Progress
<input checked="" type="checkbox"/>	Completed

SCHEDULE

DESCRIPTION	Design			DSA	BID	IN CONST	% Comp.	OCCUPIED	CLOSE-OUT	ON SCHED	COMMENTS
	SD	DD	CD								
See Comments.	<input checked="" type="checkbox"/>	<input checked="" type="checkbox"/>	<input checked="" type="checkbox"/>	<input checked="" type="checkbox"/>	<input checked="" type="checkbox"/>	<input checked="" type="checkbox"/>	100%	<input checked="" type="checkbox"/>	<input checked="" type="checkbox"/>	Yes	Building Project construction completed and closed. Several small additional projects in progress.

OK

BUDGET

FUNDING SOURCE: Measure Q

JCAF	Amount Budgeted			Total Budget (A)	Encumbered (B)	Forecast to Complete (C)	Forecast at Completion (B+C)	Expenditures to Date (E)	Encumbrance Balance (B-E=F)	Budget Balance (A-B=G)
	Measure Q	State Capital Outlay	Prop 39							
1. SITE ACQUISITION	\$ -	\$ -	\$ -	\$ -	\$ -	\$ -	\$ -	\$ -	\$ -	\$ -
2. PLANS	\$ 139,607	\$ -	\$ -	\$ 139,607	\$ 139,537	\$ 70	\$ 139,607	\$ 139,537	\$ -	\$ 70
3. WORKING DRAWINGS	\$ 274,569	\$ -	\$ -	\$ 274,569	\$ 274,569	\$ -	\$ 274,569	\$ 245,889	\$ 28,680	\$ -
4. CONSTRUCTION	\$ 2,723,481	\$ -	\$ -	\$ 2,723,481	\$ 2,713,481	\$ 10,000	\$ 2,723,481	\$ 2,649,926	\$ 63,555	\$ 10,000
5. CONTINGENCY	\$ 91,070	\$ -	\$ -	\$ 91,070	\$ -	\$ 91,070	\$ 91,070	\$ -	\$ -	\$ 91,070
6. ARCHITECTURAL AND ENGINEERING OVERSIGHT	\$ 107,570	\$ -	\$ -	\$ 107,570	\$ 102,050	\$ 5,520	\$ 107,570	\$ 102,050	\$ -	\$ 5,520
7. TESTS AND INSPECTIONS	\$ 320,204	\$ -	\$ -	\$ 320,204	\$ 303,071	\$ 17,133	\$ 320,204	\$ 303,071	\$ -	\$ 17,133
8. CONSTRUCTION MANAGEMENT	\$ 155,000	\$ -	\$ -	\$ 155,000	\$ 150,632	\$ 4,368	\$ 155,000	\$ 150,632	\$ -	\$ 4,368
9. TOTAL CONSTRUCTION COSTS (4 THRU 8 ABOVE)	\$ 3,397,325	\$ -	\$ -	\$ 3,397,325	\$ 3,269,234	\$ 128,091	\$ 3,397,325	\$ 3,205,679	\$ 63,555	\$ 128,091
10. FURNITURE AND GROUP II EQUIPMENT	\$ 646	\$ -	\$ -	\$ 646	\$ 646	\$ -	\$ 646	\$ 646	\$ -	\$ -
11. TOTAL PROJECT COST	\$ 3,812,147	\$ -	\$ -	\$ 3,812,147	\$ 3,683,986	\$ 128,161	\$ 3,812,147	\$ 3,591,751	\$ 92,235	\$ 128,161

OK

Issues and Concerns

1. No issues or concerns at this time.

Next 90 Days

1. Financial Closeout



Installation of new fascia board - Phase 2



Repairs of existing column - Phase 2



Solano Community College Small Capital Projects - Pedestrian & Vehicle Wayfinding Signs

A/E: Clearstory, Inc.

Contractor: Ellis & Ellis

Status: Active



PROJECT SUMMARY

Project: Small Capital Projects - Pedestrian & Vehicle Wayfinding Signs

Project Scope:

The Pedestrian & Vehicle Wayfinding Signs Project consists of design/installation of new exterior vehicle wayfinding signs and the procurement of pedestrian signs to provide necessary wayfinding information on the Fairfield Campus. This project will include the following components: design and construction.

Project Manager: Noe Ramos **Status:** Installation Phase

Original Project Budget: \$109,635 **Current Project Budget:** \$170,767

Project Start: July 2019 **Project End:** February 2022

Legend	
<input type="checkbox"/>	Not Started
<input type="checkbox"/>	In Progress
<input checked="" type="checkbox"/>	Completed

SCHEDULE

DESCRIPTION	Design			DSA	BID	IN CONST	% Comp.	OCCUPIED	CLOSE-OUT	ON SCHED	COMMENTS
	SD	DD	CD								
Construction Phase	<input checked="" type="checkbox"/>	<input checked="" type="checkbox"/>	<input checked="" type="checkbox"/>	N/A	<input checked="" type="checkbox"/>	<input type="checkbox"/>	90%	<input type="checkbox"/>	<input type="checkbox"/>	Yes	

BUDGET

FUNDING SOURCE: Measure Q

JCAF	Amount Budgeted			Total Budget (A)	Encumbered (B)	Forecast to Complete (C)	Forecast at Completion (B+C)	Expenditures to Date (E)	Encumbrance Balance (B-E=F)	Budget Balance (A-B=G)
	Measure Q	State Capital Outlay	Prop 39							
1. SITE ACQUISITION	\$ -	\$ -	\$ -	\$ -	\$ -	\$ -	\$ -	\$ -	\$ -	\$ -
2. PLANS	\$ -	\$ -	\$ -	\$ -	\$ -	\$ -	\$ -	\$ -	\$ -	\$ -
3. WORKING DRAWINGS	\$ 1,355	\$ -	\$ -	\$ 1,355	\$ 1,355	\$ -	\$ 1,355	\$ 1,355	\$ -	\$ -
4. CONSTRUCTION	\$ 97,706	\$ -	\$ -	\$ 97,706	\$ 64,886	\$ 32,820	\$ 97,706	\$ 64,886	\$ -	\$ 32,820
5. CONTINGENCY	\$ -	\$ -	\$ -	\$ -	\$ -	\$ -	\$ -	\$ -	\$ -	\$ -
6. ARCHITECTURAL AND ENGINEERING OVERSIGHT	\$ -	\$ -	\$ -	\$ -	\$ -	\$ -	\$ -	\$ -	\$ -	\$ -
7. TESTS AND INSPECTIONS	\$ -	\$ -	\$ -	\$ -	\$ -	\$ -	\$ -	\$ -	\$ -	\$ -
8. CONSTRUCTION MANAGEMENT	\$ -	\$ -	\$ -	\$ -	\$ -	\$ -	\$ -	\$ -	\$ -	\$ -
9. TOTAL CONSTRUCTION COSTS (4 THRU 8 ABOVE)	\$ 97,706	\$ -	\$ -	\$ 97,706	\$ 64,886	\$ 32,820	\$ 97,706	\$ 64,886	\$ -	\$ 32,820
10. FURNITURE AND GROUP II EQUIPMENT	\$ 71,706	\$ -	\$ -	\$ 71,706	\$ 52,522	\$ -	\$ 52,522	\$ 52,522	\$ -	\$ 19,184
11. TOTAL PROJECT COST	\$ 170,767	\$ -	\$ -	\$ 170,767	\$ 118,762	\$ 32,820	\$ 151,583	\$ 118,762	\$ -	\$ 52,004

Issues and Concerns

1. None at this time.

Next 90 Days

1. Installation of remaining pedestrian signs will occur once LLRC Building is complete.
2. Close out of project.



Vehicle Wayfinding Signs - Example Installation



Pedestrian Wayfinding Signs - Example Installation





Solano Community College Small Capital Projects - FF Campus Central Plant and Electrification

A/E: Salas O'Brien

Contractor: N/A

Status: Active



PROJECT SUMMARY

Project: Small Capital Projects - FF Campus Central Plant and Electrification

Project Scope:
The Fairfield Campus Central Plant and Electrification Study Project is intended to develop a Clean Energy Plant Concept(s) report, which will provide a quantitative path forward in defining a cost-effective central plant modernization project.

Project Manager: Jason Yi **Status:** Financial Closeout

Original Project Budget: \$72,360 **Current Project Budget:** \$72,360

Project Start: August 2021 **Project End:** March 2022

Legend	
<input type="checkbox"/>	Not Started
<input type="checkbox"/>	In Progress
<input checked="" type="checkbox"/>	Completed

SCHEDULE

DESCRIPTION	Design			DSA	BID	IN CONST	% Comp.	OCCUPIED	CLOSE-OUT	ON SCHED	COMMENTS
	SD	DD	CD								
Study / Feasibility	<input type="checkbox"/>	<input type="checkbox"/>	<input type="checkbox"/>	<input type="checkbox"/>	<input type="checkbox"/>	<input type="checkbox"/>	100%	<input type="checkbox"/>	<input type="checkbox"/>	Yes	

BUDGET

FUNDING SOURCE: Measure Q

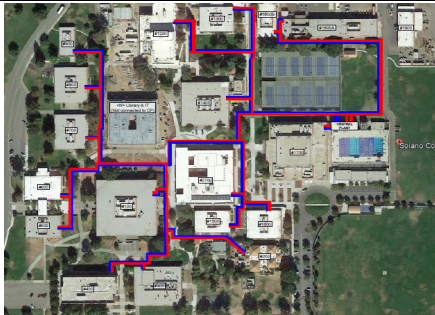
JCAF	Amount Budgeted			Total Budget (A)	Encumbered (B)	Forecast to Complete (C)	Forecast at Completion (B+C)	Expenditures to Date (E)	Encumbrance Balance (B-E=F)	Budget Balance (A-B=G)
	Measure Q	State Capital Outlay	Prop 39							
1. SITE ACQUISITION	\$ -	\$ -	\$ -	\$ -	\$ -	\$ -	\$ -	\$ -	\$ -	\$ -
2. PLANS	\$ -	\$ -	\$ -	\$ -	\$ -	\$ -	\$ -	\$ -	\$ -	\$ -
3. WORKING DRAWINGS	\$ 72,360	\$ -	\$ -	\$ 72,360	\$ 72,360	\$ -	\$ 72,360	\$ 52,053	\$ 20,308	\$ -
4. CONSTRUCTION	\$ -	\$ -	\$ -	\$ -	\$ -	\$ -	\$ -	\$ -	\$ -	\$ -
5. CONTINGENCY	\$ -	\$ -	\$ -	\$ -	\$ -	\$ -	\$ -	\$ -	\$ -	\$ -
6. ARCHITECTURAL AND ENGINEERING OVERSIGHT	\$ -	\$ -	\$ -	\$ -	\$ -	\$ -	\$ -	\$ -	\$ -	\$ -
7. TESTS AND INSPECTIONS	\$ -	\$ -	\$ -	\$ -	\$ -	\$ -	\$ -	\$ -	\$ -	\$ -
8. CONSTRUCTION MANAGEMENT	\$ -	\$ -	\$ -	\$ -	\$ -	\$ -	\$ -	\$ -	\$ -	\$ -
9. TOTAL CONSTRUCTION COSTS (4 THRU 8 ABOVE)	\$ -	\$ -	\$ -	\$ -	\$ -	\$ -	\$ -	\$ -	\$ -	\$ -
10. FURNITURE AND GROUP II EQUIPMENT	\$ -	\$ -	\$ -	\$ -	\$ -	\$ -	\$ -	\$ -	\$ -	\$ -
11. TOTAL PROJECT COST	\$ 72,360	\$ -	\$ -	\$ 72,360	\$ 72,360	\$ -	\$ 72,360	\$ 52,053	\$ 20,308	\$ -

Issues and Concerns

1. No issues or concerns at this time.

Next 90 Days

1. Financial Closeout.



CHW & HHW Schematic Overview: Fairfield Campus



Existing Central Plant Photo

CLOSED PROJECTS



**MEASURE Q BOND
CLOSED PROJECTS**

PROJECT NAME	FINAL COST⁽¹⁾	QUARTER CLOSED
FF CAMPUS		
Performing Arts Building (Phase 1 B1200 Renovation):		
Performing Arts Costume Workshop	\$95,386	9/30/2017
Performing Arts Swing Space	\$1,137,703	3/31/2018
Performing Arts Building (Phase 1, B1200 Renovation)	\$18,976,510	12/31/2018
Science Building (Phase 1)	\$35,005,734	6/30/2020
Agriculture (Horticulture):		
Horticulture (Phase 1)	\$948,805	12/31/2020
Horticulture (Phase 2) - Modular Restroom	\$399,662	3/31/2021
VV CAMPUS		
VV Classroom Building Purchase & Renovation:		
Vacaville Classroom Building Purchase	\$2,492,118	9/30/2015
Vacaville Classroom Building Renovation (Phase 1)	\$1,100,200	6/30/2017
Biotechnology & Science Building:		
Biotechnology & Science Swing Space	\$31,730	6/30/2016
Biotechnology & Science Building	\$32,161,129	9/30/2019
Vacaville Center Intersection Improvements	\$1,122,807	12/31/2019
Vacaville Center HVAC Upgrade	\$2,150,306	9/30/2019
VJ CAMPUS		
Vallejo Property Purchase Belvedere	\$4,794,343	9/30/2015
Vallejo Property Purchase Northgate	\$6,871,471	6/30/2015
Autotechnology Building:		
Autotechnology Building	\$22,454,303	6/30/2018
Autotechnology Swing Space	\$1,281,659	3/31/2018
Vallejo Center HVAC Upgrade	\$2,135,178	9/30/2018
INFRASTRUCTURE IMPROVEMENTS		
IT Infrastructure Improvements:		
IT Infrastructure Improvements (Phase 1)	\$4,010,980	6/30/2017
IT Infrastructure Improvements (Phase 2) – B100 Generator Project	\$490,321	9/30/2018
Utility Infrastructure Upgrade (Energy):		
Utility Infrastructure Upgrade (Energy) – ESCO Lighting	\$628,994	3/31/2015
Utility Infrastructure Upgrade (Energy) – ESCO Mechanical	\$5,857,375	3/31/2016
Utility Infrastructure Upgrade – Site Lighting Improvements	\$150,321	12/31/2016
Utility Infrastructure Upgrade – Fairfield Substation #1 & #2 Replacement	\$2,088,015	12/31/2018
Utility Infrastructure Upgrade – Solar Voltaic	\$16,659,074	12/31/2018

PROJECT NAME	FINAL COST ⁽¹⁾	QUARTER CLOSED
ADA & CLASSROOM IMPROVEMENTS		
Small Capital Projects:		
Building 100 Adjunct Center	\$77,334	3/31/2015
Building 100 Staff Lounge	\$33,165	3/31/2015
HVAC Systems	\$115,372	3/31/2015
Building 1400 FF&E	\$35,450	12/31/2018
Vacaville FF&E/Shelving Design & Installation	\$6,930	12/31/2018
Baseball Field	\$5,303	12/31/2018
Vacaville and Vallejo Center Signage	\$11,480	12/31/2018
Child Development FF&E	\$1,988	12/31/2018
Building 100 Data Center	\$5,000	12/31/2018
21st Century Classroom (Phase 1)	\$141,059	6/30/2016
Middle College High School	\$196,184	12/31/2016
Building 1600 Classroom Improvement	\$38,189	3/31/2016
Building 1800 Classroom Improvement	\$32,670	6/30/2016
Building 300 Feasibility Study	\$23,445	12/31/2018
Building 1600 Re-Roofing	\$205,007	9/30/2016
CDFS Building Window Shades & Building 200 Kitchen Renovation	\$209,067	12/31/2016
Building 1300 Kiln Fence	\$44,408	9/30/2016
Building 100 Academic Success and Tutoring Expansion	\$204,568	3/31/2017
21st Century Classroom (Phase 2)	\$139,937	12/31/2016
Building 1800 Mechatronics Presentation Walls	\$51,947	12/31/2018
Building 1400 Food Service Area Assessment	\$18,800	12/31/2018
Hydronic Pumps Replacement	\$96,731	9/30/2016
FF&E Replacement (Phase 1)	\$348,466	9/30/2018
Asbestos Abatement (B100, B1900)	\$26,980	12/31/2018
Site Lighting Improvements (FF) (Alternate)	\$35,350	12/31/2018
Building 100 Lobby Tables, Electrical and Lighting	\$19,300	12/31/2018
FF Campus Entry Sidewalk Improvements - Phase 1	\$36,358	12/31/2018
Hydronic Pump Insulation	\$11,975	12/31/2018
Glides for New Classroom Furniture	\$4,780	12/31/2018
Swing Space Portables	\$6,707	12/31/2018
Fire Alarm Panel Connectors	\$5,554	12/31/2018
B100 Lobby Tables	\$7,866	12/31/2018
Fairfield Campus Directories	\$65,453	12/31/2018
Bench for Fairfield Campus Entry	\$1,915	12/31/2018
Softball Bleachers Replacement Project	\$490,172	6/30/2018
B1800 Exiting Corridor	\$160,167	12/31/2018
B1800 Makers Space & Robotics Lab Renovation	\$433,666	12/31/2018
Building 1200 Signage	\$8,180	12/31/2018
Vacaville & Vallejo Centers HVAC Upgrade Design	\$102,066	3/31/2019
B600 Room 604 Renovation	\$106,340	6/30/2019
Building 300 Exterior Signage	\$3,037	12/31/2019
Childcare Building 200A Repair	\$24,631	3/31/2020
Room 1315 Countertop Replacement	\$14,000	3/31/2020
Portable Relocation	\$13,534	3/31/2020
B1500 Corridor Painting	\$7,187	3/31/2020
Pool Deck Repair	\$6,000	3/31/2020
B800 Wall Paper Repair	\$2,485	3/31/2020
Parking Lot 6 Seal Coat	\$12,137	3/31/2020
Pool Cover Replacement	\$9,234	3/31/2020
Scoreboard Replacement	\$132,047	3/31/2020

PROJECT NAME	FINAL COST⁽¹⁾	QUARTER CLOSED
Districtwide Security Lockdown System	\$270,009	6/30/2020
Building 800 Parking Lot Rehabilitation	\$59,980	6/30/2020
Parking Lot #1 Resurfacing	\$1,384,419	12/31/2020
Bleacher Replacement - Baseball & Soccer	\$333,286	3/31/2021
B300 Modifications - Graphics and Mailroom	\$312,710	6/30/2021
Districtwide FF&E	\$186,392	12/31/2021
Capital Equipment	\$783,112	12/31/2021
Fairfield Campus Building Exteriors ⁽²⁾	\$571,081	3/31/2022
Early College High School Portables ⁽²⁾	\$736,198	3/31/2022
B1800B Exterior Roof Canopy ⁽²⁾	\$560,239	3/31/2022
ADA Improvements:		
Fairfield Campus Entry Sidewalk Improvements (ADA Improvements)	\$438,082	12/31/2018
⁽¹⁾ Final cost included other funding sources.		
⁽²⁾ Final Project Sheet included with this Quarterly Report.		



Solano Community College
Small Capital Projects - Fairfield Campus Building Exteriors

A/E: Aedis, Inc.

Contractor: Jeff Painting/Color New Status: Completed



PROJECT SUMMARY

Project: Small Capital Projects - Fairfield Campus Building Exteriors

Project Scope:

The Fairfield Campus Building Exteriors Project consists of design work, miscellaneous exterior building repairs, and the complete exterior painting of select buildings on the Fairfield Campus. This work will assist with wayfinding throughout the Fairfield Campus. This project will be completed in multiple phases. This project will include the following components: design and construction.

Project Manager: Noe Ramos **Status:** Completed

Original Project Budget: \$1,000,000 **Current Project Budget:** \$571,081

Project Start: March 2020 **Project End:** January 2022

Legend	
<input type="checkbox"/>	Not Started
<input type="checkbox"/>	In Progress
<input checked="" type="checkbox"/>	Completed

SCHEDULE

DESCRIPTION	Design			DSA	BID	IN CONST	% Comp.	OCCUPIED	CLOSE-OUT	ON SCHED	COMMENTS
	SD	DD	CD								
Phase 1 Exteriors Project	<input checked="" type="checkbox"/>	<input checked="" type="checkbox"/>	<input checked="" type="checkbox"/>	<input checked="" type="checkbox"/>	<input checked="" type="checkbox"/>	<input checked="" type="checkbox"/>	100%	<input checked="" type="checkbox"/>	<input checked="" type="checkbox"/>	YES	Completed - Phase 1
Phase 2 Exteriors Project	<input checked="" type="checkbox"/>	<input checked="" type="checkbox"/>	<input checked="" type="checkbox"/>	<input checked="" type="checkbox"/>	<input checked="" type="checkbox"/>	<input checked="" type="checkbox"/>	100%	<input checked="" type="checkbox"/>	<input checked="" type="checkbox"/>	YES	Completed - Phase 2

BUDGET

FUNDING SOURCE: Measure Q

JCAF	Amount Budgeted			Total Budget (A)	Encumbered (B)	Forecast to Complete (C)	Forecast at Completion (B+C)	Expenditures to Date (E)	Encumbrance Balance (B-E=F)	Budget Balance (A-B=G)
	Measure Q	State Capital Outlay	Prop 39							
1. SITE ACQUISITION	\$ -	\$ -	\$ -	\$ -	\$ -	\$ -	\$ -	\$ -	\$ -	\$ -
2. PLANS	\$ -	\$ -	\$ -	\$ -	\$ -	\$ -	\$ -	\$ -	\$ -	\$ -
3. WORKING DRAWINGS	\$ 53,221	\$ -	\$ -	\$ 53,221	\$ 53,221	\$ -	\$ 53,221	\$ 53,221	\$ -	\$ -
4. CONSTRUCTION	\$ 517,860	\$ -	\$ -	\$ 517,860	\$ 517,860	\$ -	\$ 517,860	\$ 517,860	\$ -	\$ -
5. CONTINGENCY	\$ -	\$ -	\$ -	\$ -	\$ -	\$ -	\$ -	\$ -	\$ -	\$ -
6. ARCHITECTURAL AND ENGINEERING OVERSIGHT	\$ -	\$ -	\$ -	\$ -	\$ -	\$ -	\$ -	\$ -	\$ -	\$ -
7. TESTS AND INSPECTIONS	\$ -	\$ -	\$ -	\$ -	\$ -	\$ -	\$ -	\$ -	\$ -	\$ -
8. CONSTRUCTION MANAGEMENT	\$ -	\$ -	\$ -	\$ -	\$ -	\$ -	\$ -	\$ -	\$ -	\$ -
9. TOTAL CONSTRUCTION COSTS (4 THRU 8 ABOVE)	\$ 517,860	\$ -	\$ -	\$ 517,860	\$ 517,860	\$ -	\$ 517,860	\$ 517,860	\$ -	\$ -
10. FURNITURE AND GROUP II EQUIPMENT	\$ -	\$ -	\$ -	\$ -	\$ -	\$ -	\$ -	\$ -	\$ -	\$ -
11. TOTAL PROJECT COST	\$ 571,081	\$ -	\$ -	\$ 571,081	\$ 571,081	\$ -	\$ 571,081	\$ 571,081	\$ -	\$ -

Issues and Concerns

1. None at this time.

Next 90 Days

1. Completed.



Building 1200



Building 400



Solano Community College Small Capital Projects - Early College High School Portables

A/E: HMR Architects, Inc.

Contractor: Arthulia, Inc.

Status: Completed



PROJECT SUMMARY

Project: Small Capital Projects - Early College High School Portables

Project Scope:

Small Capital Project - Early College High School Portables consists of the addition of two portable classrooms on the Fairfield Campus. These classrooms will be utilized by the Early College High School Program during the upcoming school year - Fall 2020. The project will include the following components: design, DSA submittal and construction.

Project Manager: Noe Ramos **Status:** Completed

Original Project Budget: \$750,000 **Current Project Budget:** \$736,198

Project Start: March 2020 **Project End:** August 2021

Legend	
<input type="checkbox"/>	Not Started
<input type="checkbox"/>	In Progress
<input checked="" type="checkbox"/>	Completed

SCHEDULE

DESCRIPTION	Design			DSA	BID	IN CONST	% Comp.	OCCUPIED	CLOSE-OUT	ON SCHED	COMMENTS
	SD	DD	CD								
Close Out Phase	■	■	■	■	■	■	100%	■	■	YES	

OK

BUDGET

FUNDING SOURCE: Measure Q

JCAF	Amount Budgeted			Total Budget (A)	Encumbered (B)	Forecast to Complete (C)	Forecast at Completion (B+C)	Expenditures to Date	Encumbrance Balance (B-E=F)	Budget Balance (A-B=G)
	Measure Q	State Capital Outlay	Prop 39							
1. SITE ACQUISITION	\$ -	\$ -	\$ -	\$ -	\$ -	\$ -	\$ -	\$ -	\$ -	\$ -
2. PLANS	\$ -	\$ -	\$ -	\$ -	\$ -	\$ -	\$ -	\$ -	\$ -	\$ -
3. WORKING DRAWINGS	\$ 46,209	\$ -	\$ -	\$ 46,209	\$ 46,209	\$ -	\$ 46,209	\$ 46,209	\$ -	\$ -
4. CONSTRUCTION	\$ 247,500	\$ -	\$ -	\$ 247,500	\$ 247,500	\$ -	\$ 247,500	\$ 247,500	\$ -	\$ -
5. CONTINGENCY	\$ -	\$ -	\$ -	\$ -	\$ -	\$ -	\$ -	\$ -	\$ -	\$ -
6. ARCHITECTURAL AND ENGINEERING OVERSIGHT	\$ -	\$ -	\$ -	\$ -	\$ -	\$ -	\$ -	\$ -	\$ -	\$ -
7. TESTS AND INSPECTIONS	\$ 19,792	\$ -	\$ -	\$ 19,792	\$ 19,792	\$ -	\$ 19,792	\$ 19,792	\$ -	\$ -
8. CONSTRUCTION MANAGEMENT	\$ -	\$ -	\$ -	\$ -	\$ -	\$ -	\$ -	\$ -	\$ -	\$ -
9. TOTAL CONSTRUCTION COSTS (4 THRU 8 ABOVE)	\$ 267,292	\$ -	\$ -	\$ 267,292	\$ 267,292	\$ -	\$ 267,292	\$ 267,292	\$ -	\$ -
10. FURNITURE AND GROUP II EQUIPMENT	\$ 422,697	\$ -	\$ -	\$ 422,697	\$ 422,697	\$ -	\$ 422,697	\$ 422,697	\$ -	\$ -
11. TOTAL PROJECT COST	\$ 736,198	\$ -	\$ -	\$ 736,198	\$ 736,198	\$ -	\$ 736,198	\$ 736,198	\$ -	\$ -

OK

Issues and Concerns

1. No issues or concerns at this time.

Next 90 Days

1. Completed.



Portable Classrooms - Front



Portable Classrooms - Back



Solano Community College Small Capital Projects - B1800B Exterior Roof Canopy

A/E: HMR Architects, Inc. Contractor: J-Walt Construction Status: Completed



PROJECT SUMMARY

Project: Small Capital Projects - B1800B Exterior Roof Canopy

Project Scope: Small Capital Projects - B1800B Exterior Roof Canopy consists of replacing a failing existing roof structure serving an outdoor lab space for students learning to use welding equipment and various pieces of machinery. The scope of work includes design for the replacement of the existing roof structure with a new structure to provide students a safe learning environment. The project will include the following components: planning, design and construction.	Project Manager: Jason Yi Status: Completed Original Project Budget: \$350,000 Current Project Budget: \$560,239 Project Start: May 2020 Project End: September 2021
---	--

Legend
<input type="checkbox"/> Not Started
<input type="checkbox"/> In Progress
<input checked="" type="checkbox"/> Completed

SCHEDULE

DESCRIPTION	Design			DSA	BID	IN CONST	% Comp.	OCCUPIED	CLOSE-OUT	ON SCHED	COMMENTS
	SD	DD	CD								
Project Close Out	<input type="checkbox"/>	<input type="checkbox"/>	<input checked="" type="checkbox"/>	<input checked="" type="checkbox"/>	<input checked="" type="checkbox"/>	<input checked="" type="checkbox"/>	100%	<input checked="" type="checkbox"/>	<input checked="" type="checkbox"/>	YES	

BUDGET

FUNDING SOURCE: Measure Q

JCAF	Amount Budgeted			Total Budget (A)	Encumbered (B)	Forecast to Complete (C)	Forecast at Completion (B+C)	Expenditures to Date	Encumbrance Balance (B-E=F)	Budget Balance (A-B=G)
	Measure Q	State Capital Outlay	Prop 39							
1. SITE ACQUISITION	\$ -	\$ -	\$ -	\$ -	\$ -	\$ -	\$ -	\$ -	\$ -	\$ -
2. PLANS	\$ -	\$ -	\$ -	\$ -	\$ -	\$ -	\$ -	\$ -	\$ -	\$ -
3. WORKING DRAWINGS	\$ 44,825	\$ -	\$ -	\$ 44,825	\$ 44,825	\$ -	\$ 44,825	\$ 44,825	\$ -	\$ -
4. CONSTRUCTION	\$ 486,835	\$ -	\$ -	\$ 486,835	\$ 486,835	\$ -	\$ 486,835	\$ 486,835	\$ -	\$ -
5. CONTINGENCY	\$ -	\$ -	\$ -	\$ -	\$ -	\$ -	\$ -	\$ -	\$ -	\$ -
6. ARCHITECTURAL AND ENGINEERING OVERSIGHT	\$ -	\$ -	\$ -	\$ -	\$ -	\$ -	\$ -	\$ -	\$ -	\$ -
7. TESTS AND INSPECTIONS	\$ 28,579	\$ -	\$ -	\$ 28,579	\$ 28,579	\$ -	\$ 28,579	\$ 28,579	\$ -	\$ -
8. CONSTRUCTION MANAGEMENT	\$ -	\$ -	\$ -	\$ -	\$ -	\$ -	\$ -	\$ -	\$ -	\$ -
9. TOTAL CONSTRUCTION COSTS (4 THRU 8 ABOVE)	\$ 515,414	\$ -	\$ -	\$ 515,414	\$ 515,414	\$ -	\$ 515,414	\$ 515,414	\$ -	\$ -
10. FURNITURE AND GROUP II EQUIPMENT	\$ -	\$ -	\$ -	\$ -	\$ -	\$ -	\$ -	\$ -	\$ -	\$ -
11. TOTAL PROJECT COST	\$ 560,239	\$ -	\$ -	\$ 560,239	\$ 560,239	\$ -	\$ 560,239	\$ 560,239	\$ -	\$ -

Issues and Concerns

1. None at this time.

Next 90 Days

1. Completed.



Completed Canopy Structure



Completed Canopy Structure

