

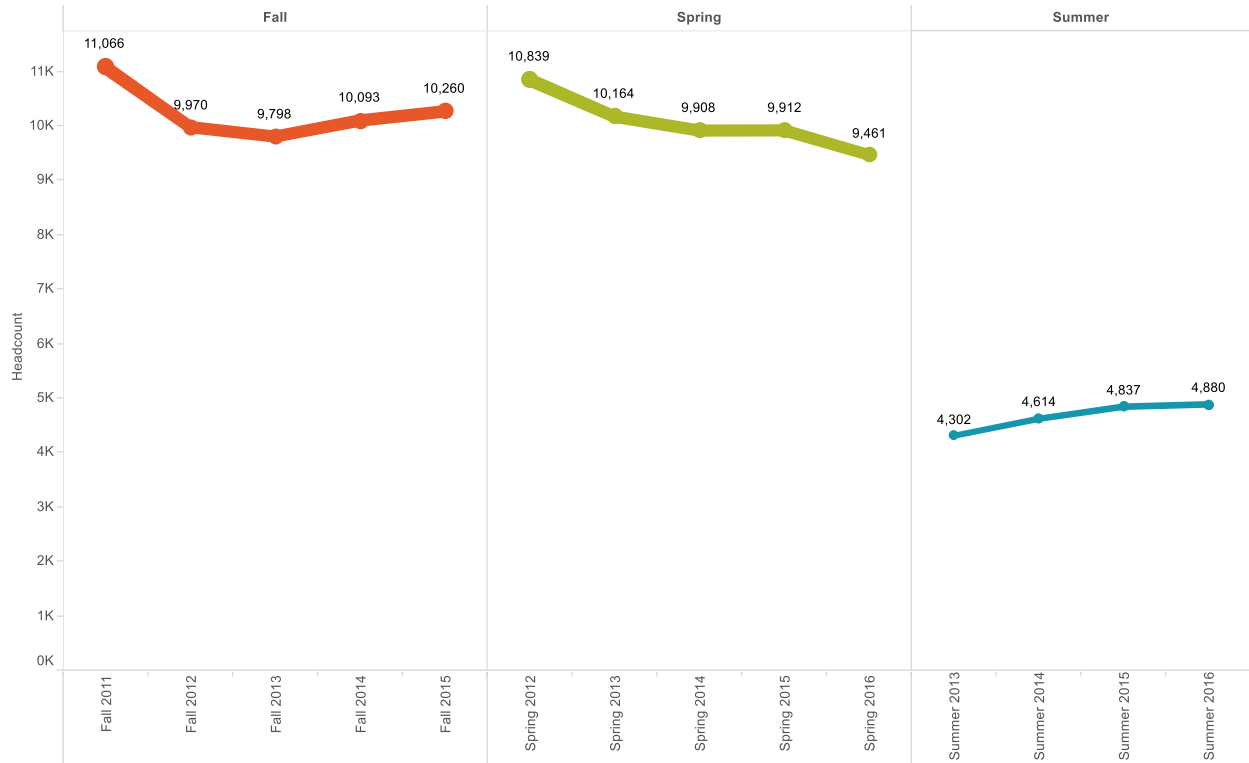
SOLANO COMMUNITY COLLEGE: CONTEXTUAL DATA

TABLE OF CONTENTS

- Student Demographics 2
 - Student Headcounts 2
 - Student Enrollments 3
 - 2015/2016 Enrollments by Zip Code 4
 - Percent Headcount by Gender 5
 - Percent Headcount by Student Ethnicity 6
 - Percent Headcount by Age Group 7
 - Percent Headcount by Terms Attended 8
- Course Schedule Data 9
 - Fall 2015 Top 25 Courses Sections over 90% Full 9
 - FTEF by Workload Type 10
 - Percent Change in Section Count 11
 - Percent Changes in FTEF 12
 - Percent Changes in Census Enrollment 13
 - Percent Changes in FTES 14
 - Percent Change Average Enrollment 15
 - Percent Change in Average Efficiency 16
- Student Success and Equity Data 17
 - 2015/2016 Course Enrollment and Success Plot 17
 - 2015/2016 Section Success Rates Variance 18
 - 2015/2016 Online and Face to Face Comparison 19
 - Disproportionate Impact Top 12 Classes: Table A 20
 - Disproportionate Impact Top 12 Classes: Table B 21

STUDENT DEMOGRAPHICS

STUDENT HEADCOUNTS



Charts show unique student headcounts by term

STUDENT ENROLLMENTS

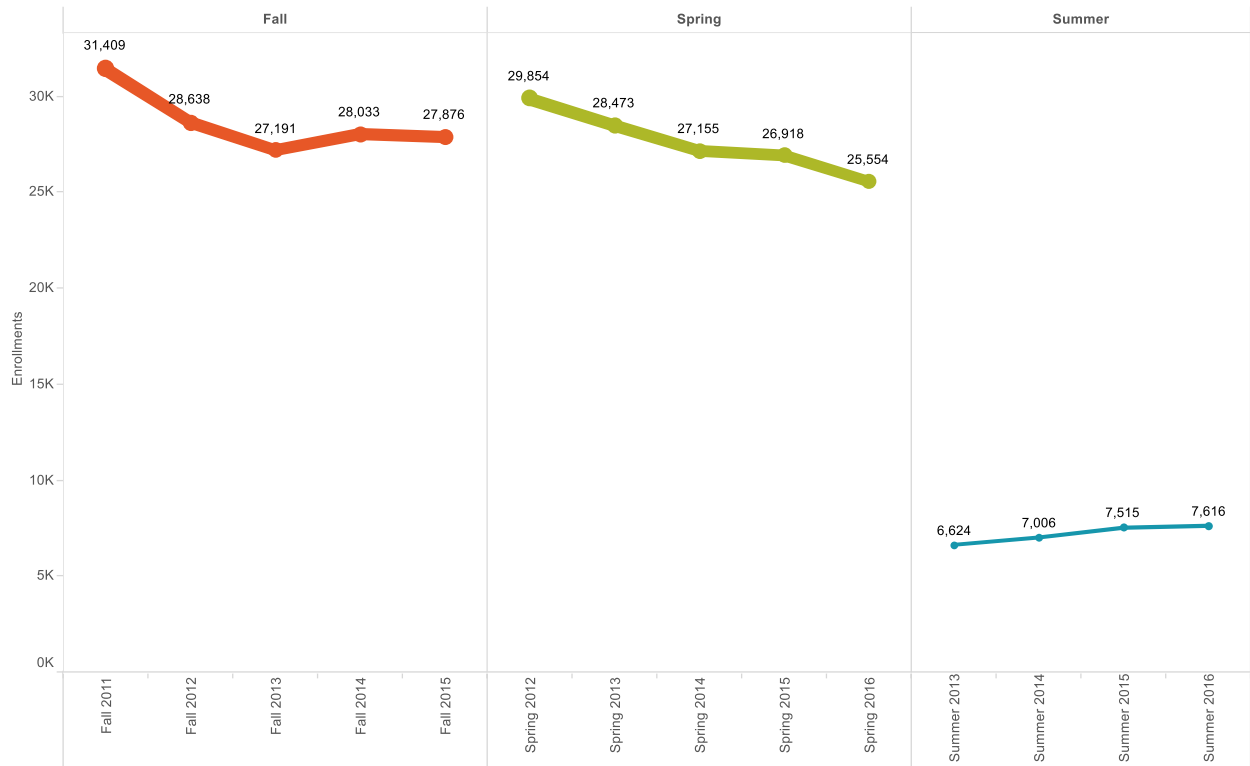
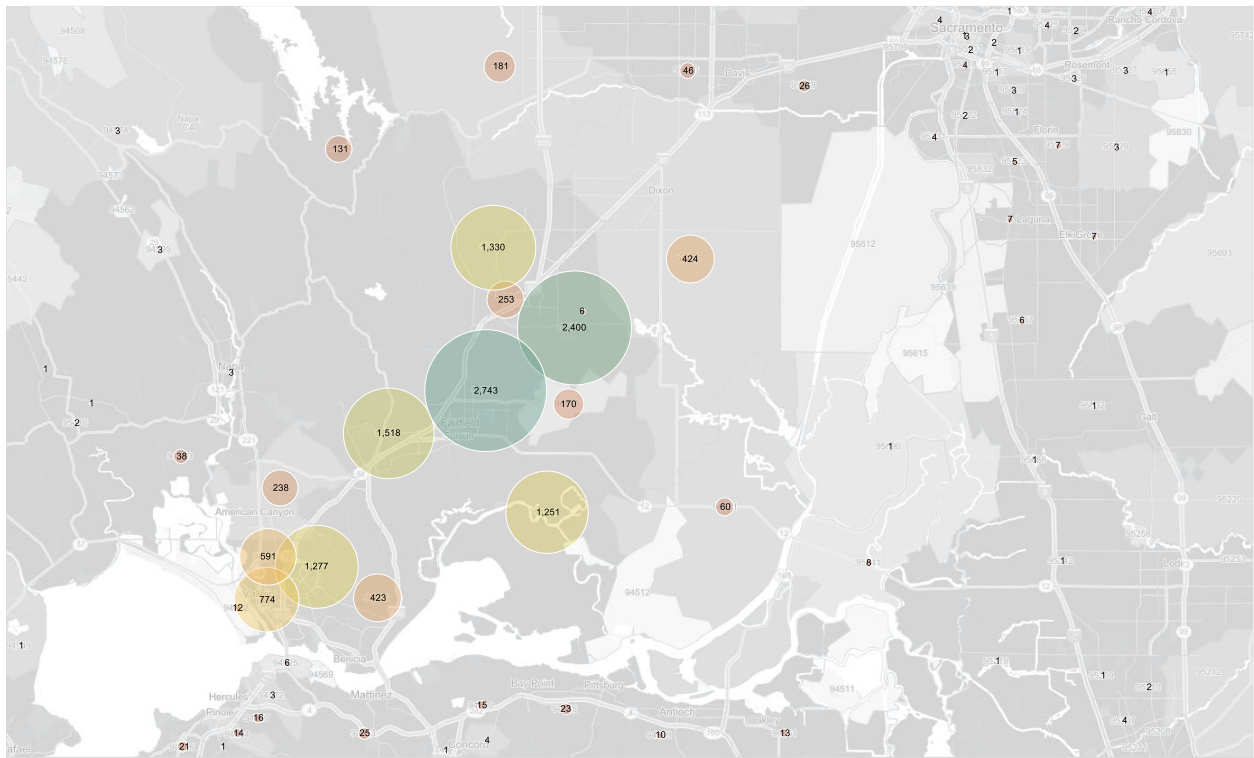


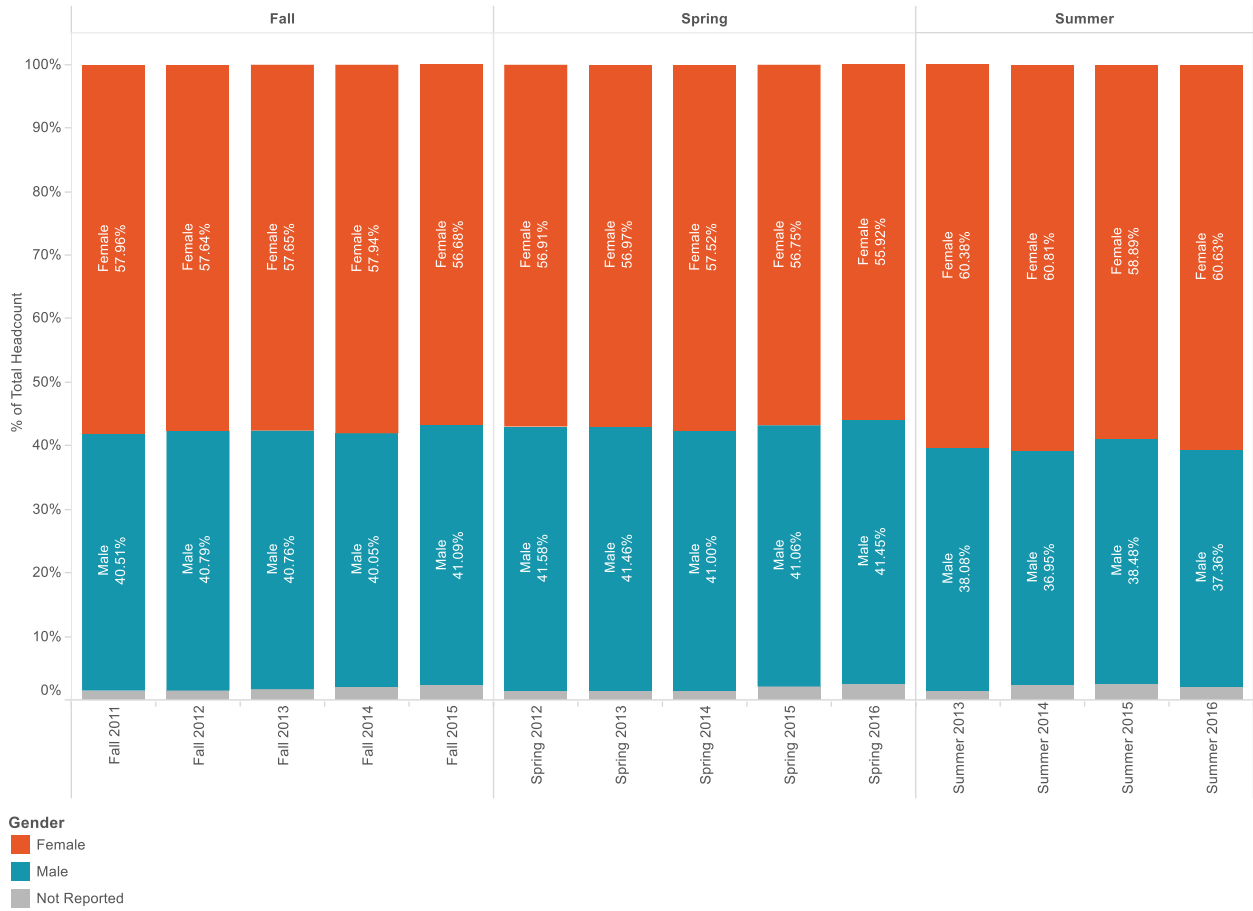
Chart shows student enrollments by term

2015/2016 ENROLLMENTS BY ZIP CODE



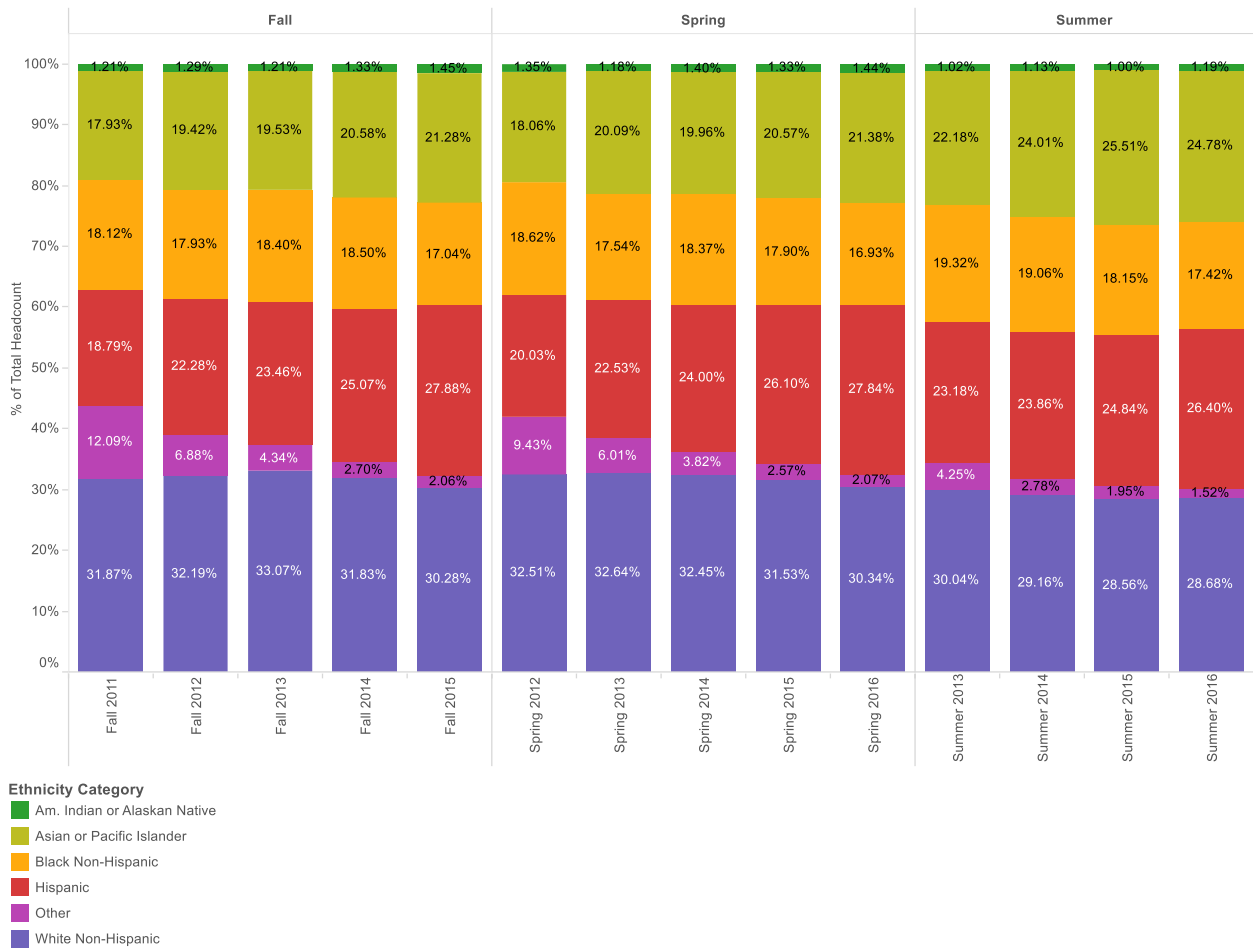
Map shows 2015/2016 enrollments by Zip Code

PERCENT HEADCOUNT BY GENDER



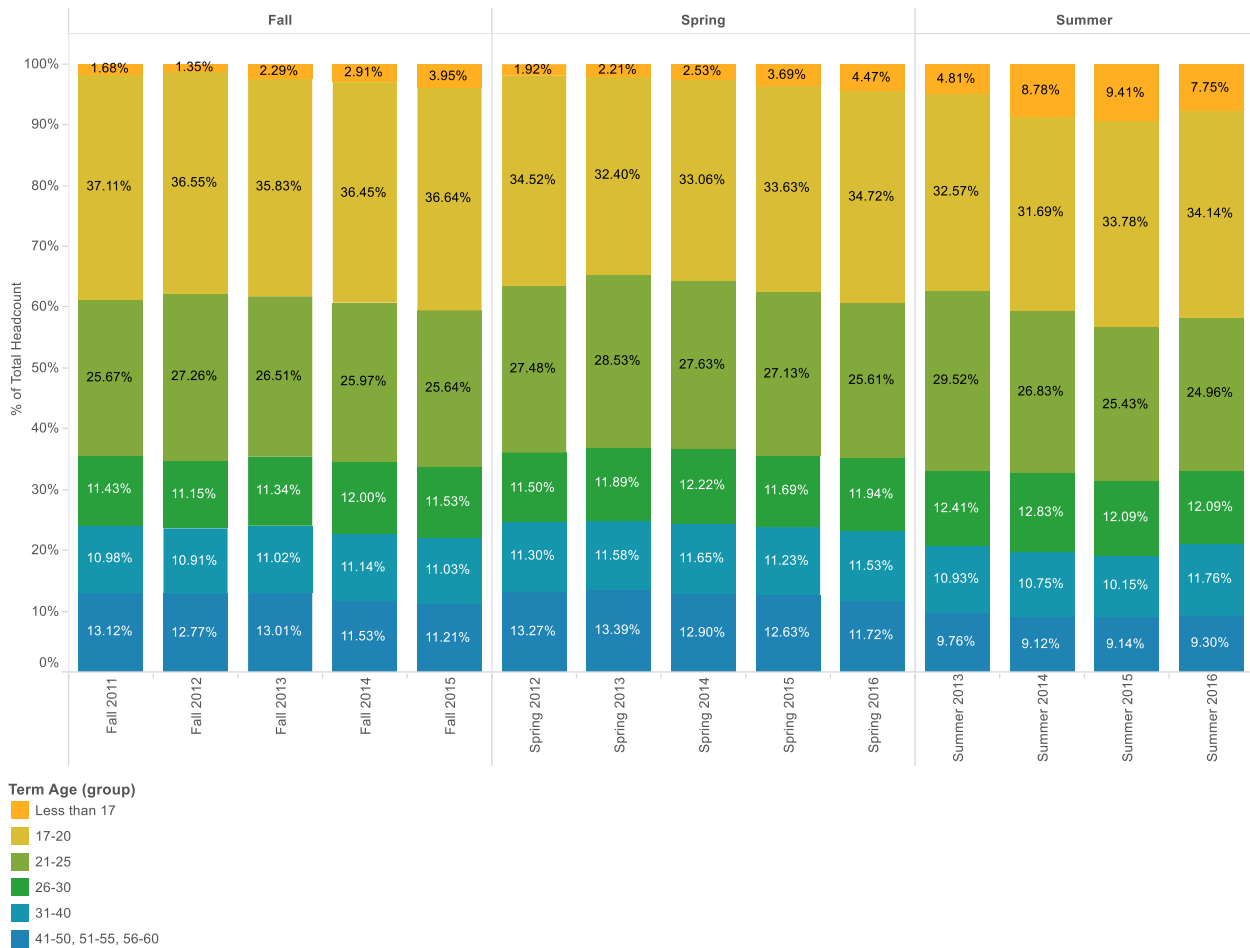
Bar chart shows percent headcount by gender

PERCENT HEADCOUNT BY STUDENT ETHNICITY



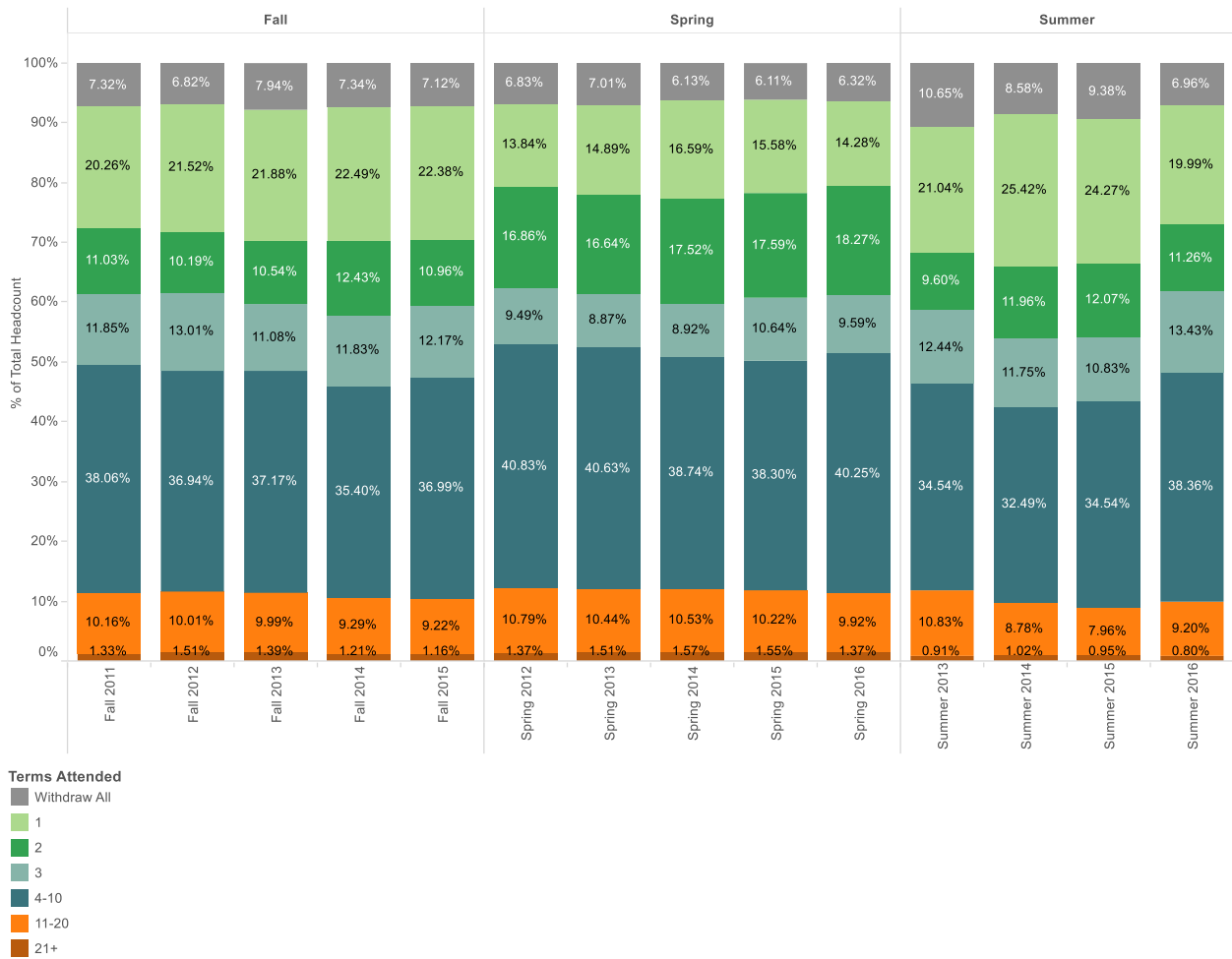
Bar chart shows percent headcount by ethnicity

PERCENT HEADCOUNT BY AGE GROUP



Bar chart shows percent headcount by age group

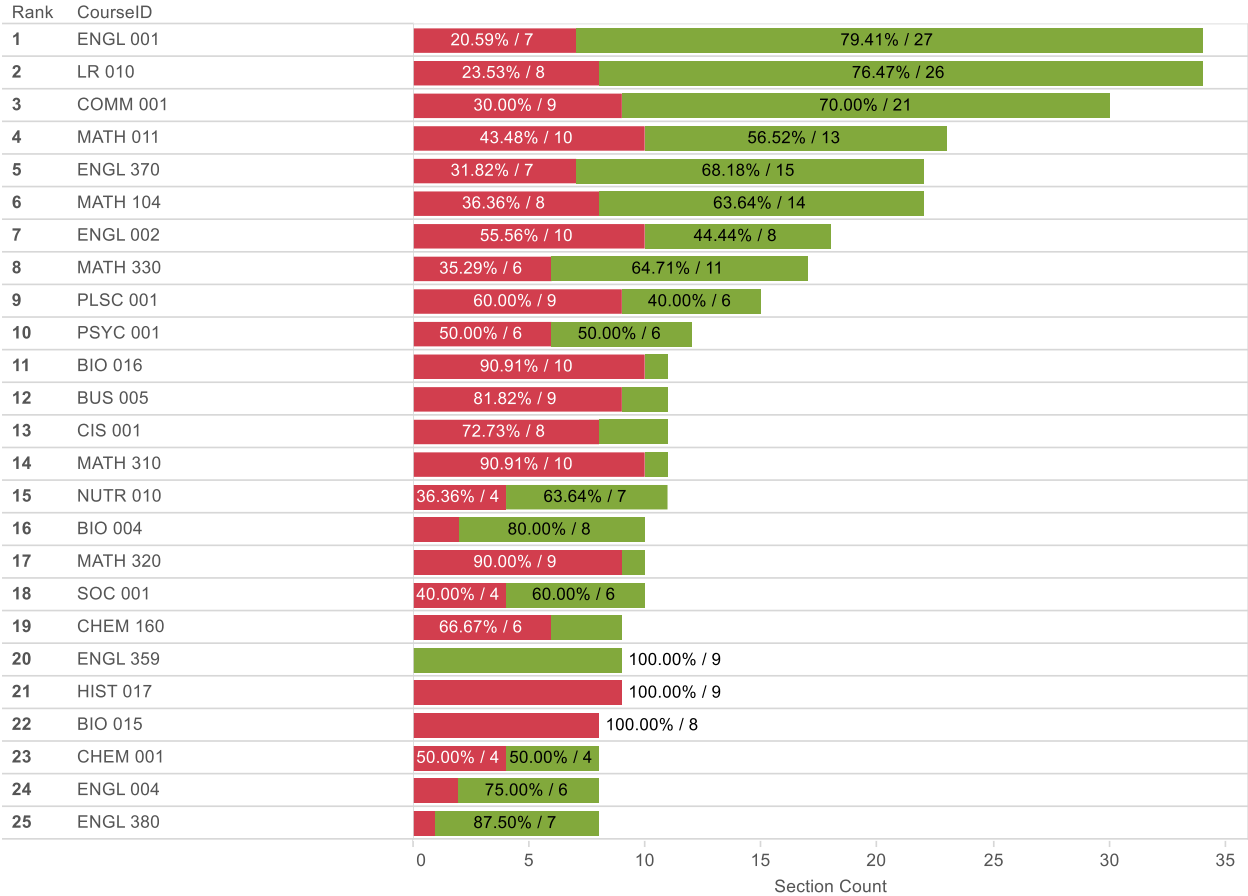
PERCENT HEADCOUNT BY TERMS ATTENDED



Bar chart shows percent headcount by number of terms student has attended SCC

COURSE SCHEDULE DATA

FALL 2015 TOP 25 COURSES SECTIONS OVER 90% FULL

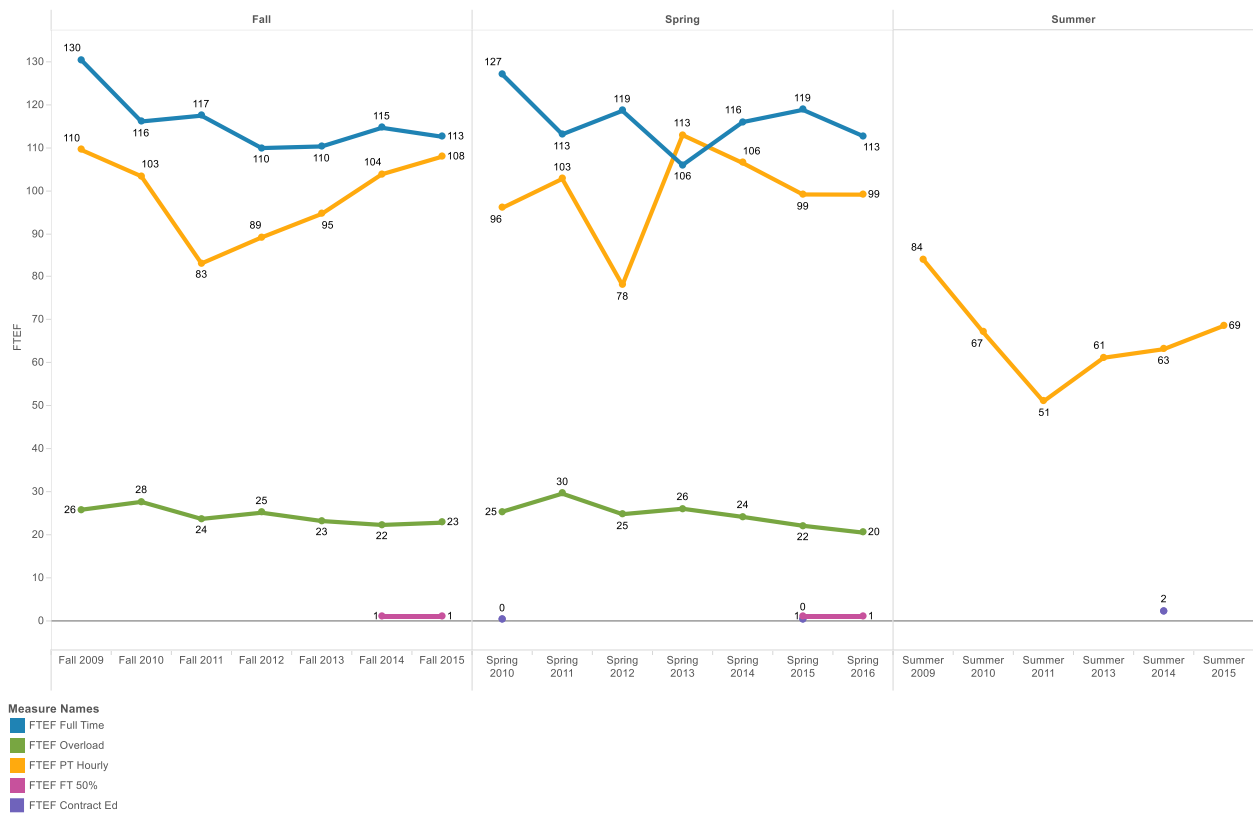


Over % Fill Status

- Over 90%
- Under 90%

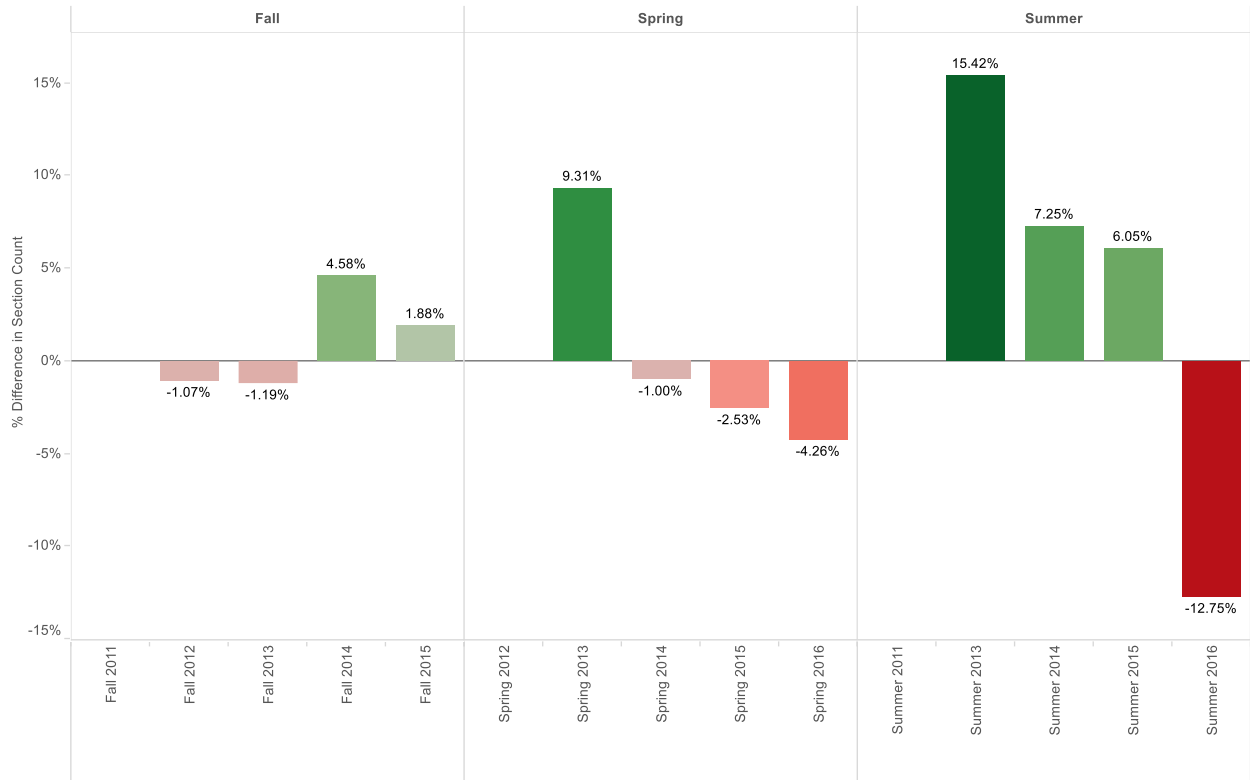
Bar chart shows top 25 courses in Fall 2015 based on number of sections offered. Coloration shows percentage of those sections that are over or under 90% full

FTEF BY WORKLOAD TYPE



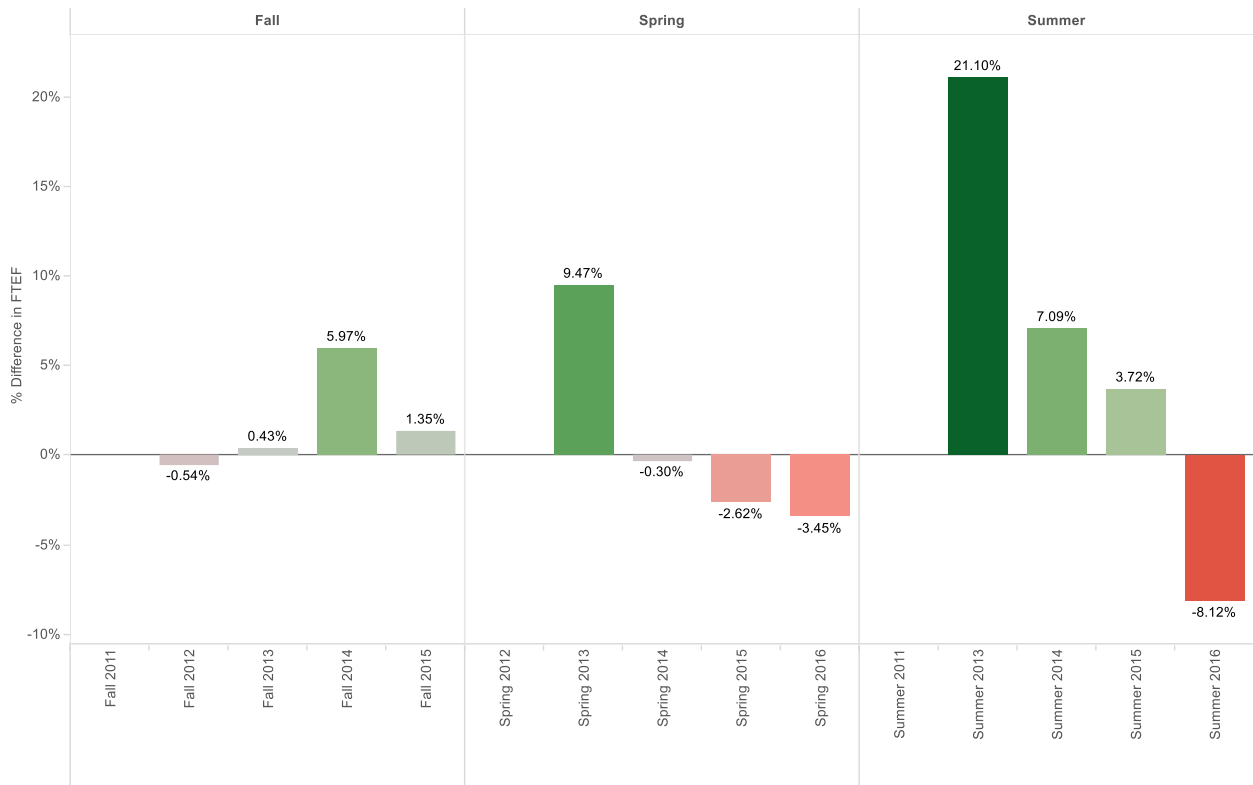
Line chart shows FTEF by workload type by semester

PERCENT CHANGE IN SECTION COUNT



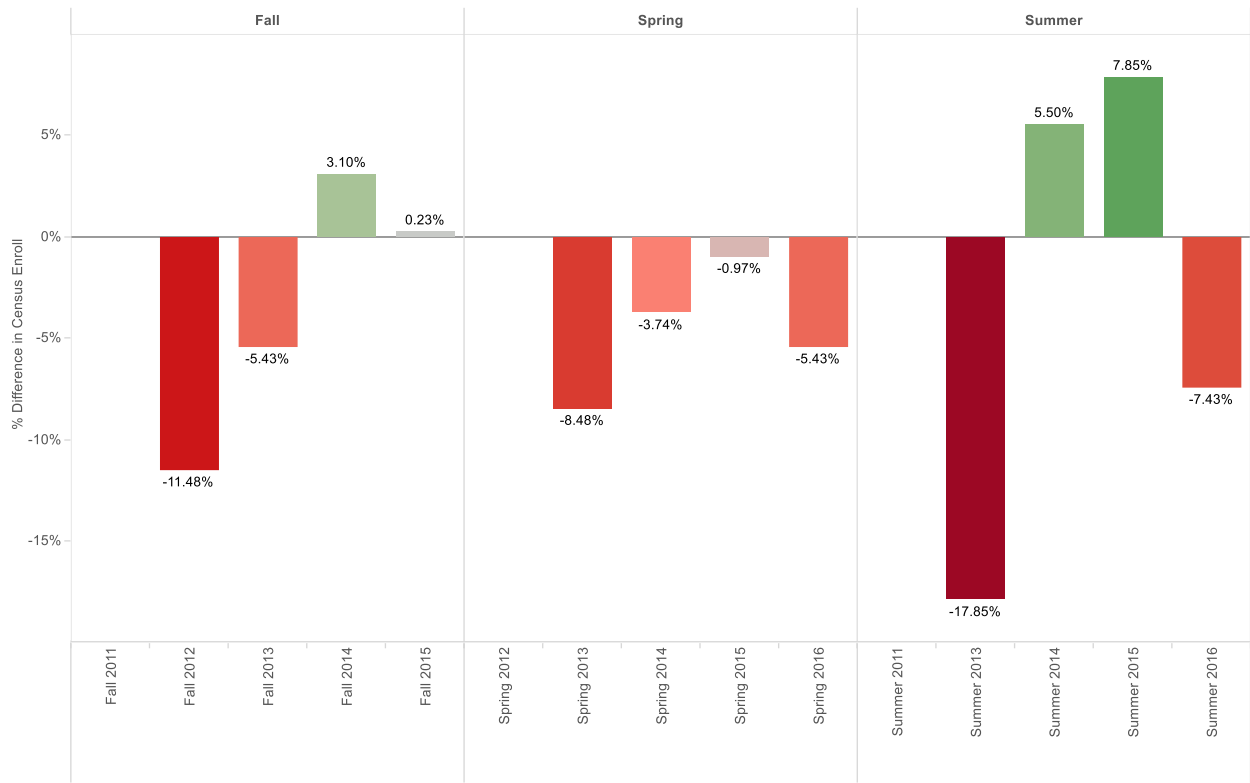
Bar chart shows term to term percent change in section count.

PERCENT CHANGES IN FTEF



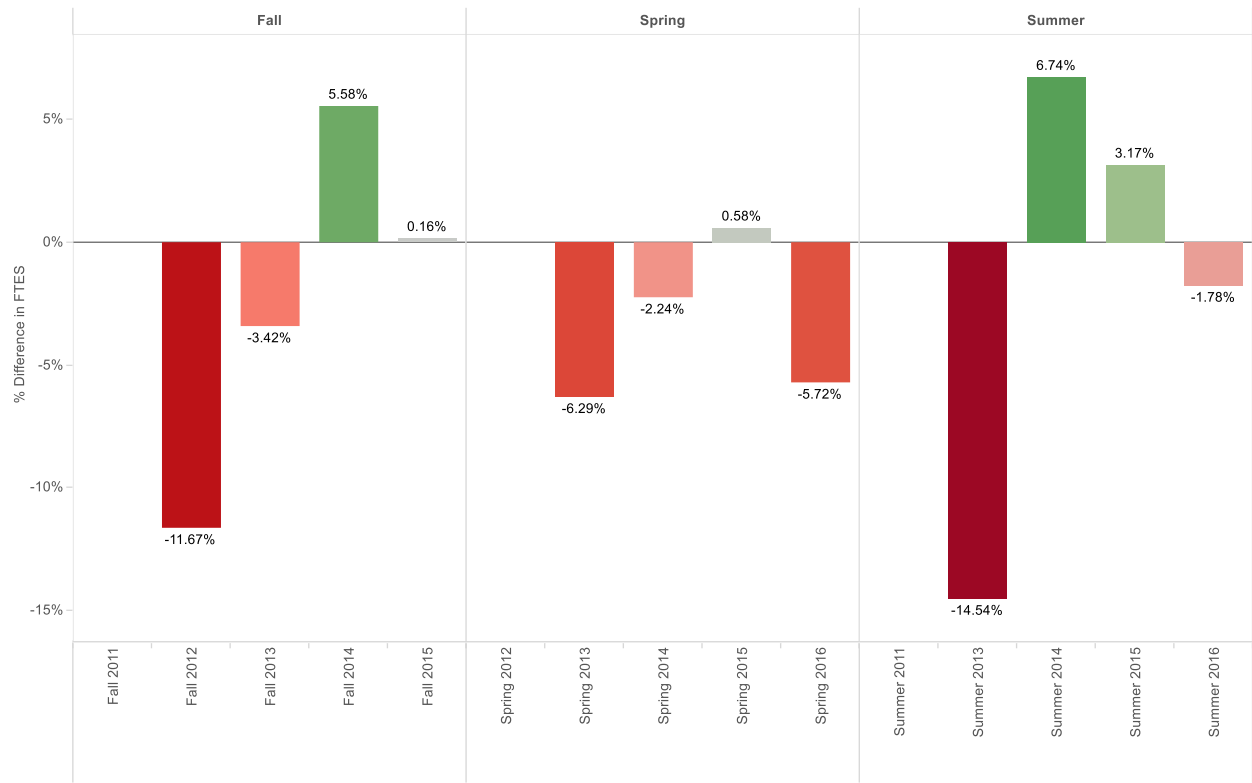
Bar chart shows term to term percent change in FTEF

PERCENT CHANGES IN CENSUS ENROLLMENT



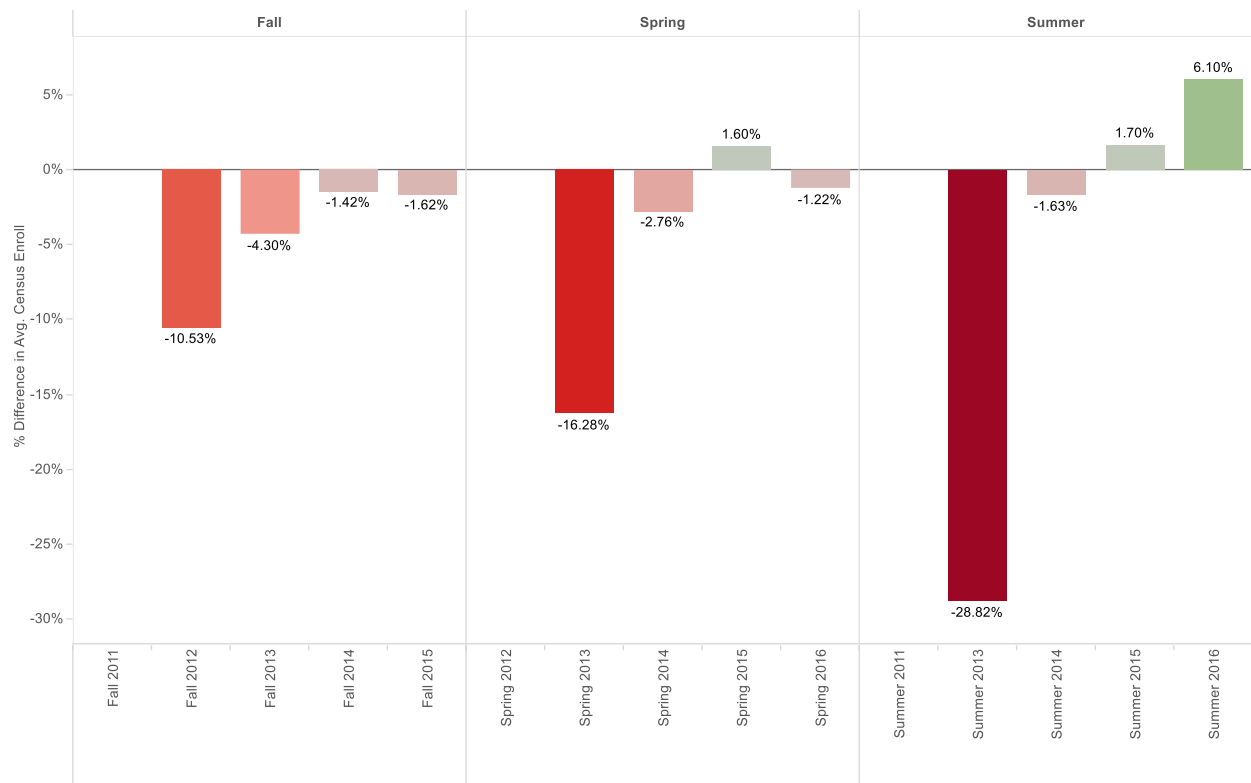
Bar chart shows term to term percent change in total census enrollment

PERCENT CHANGES IN FTES



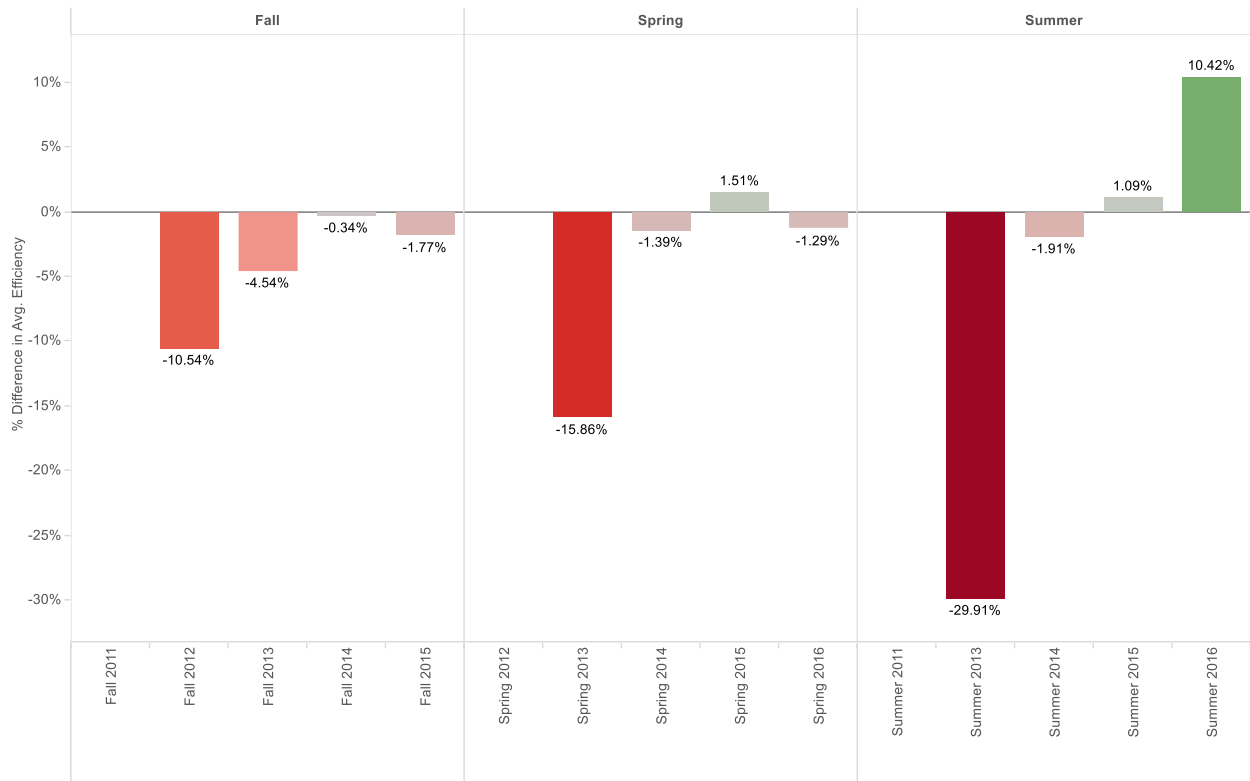
Bar chart shows term to term percent change in FTES

PERCENT CHANGE AVERAGE ENROLLMENT



Bar chart shows term to term percent change in average census enrollment (class size)

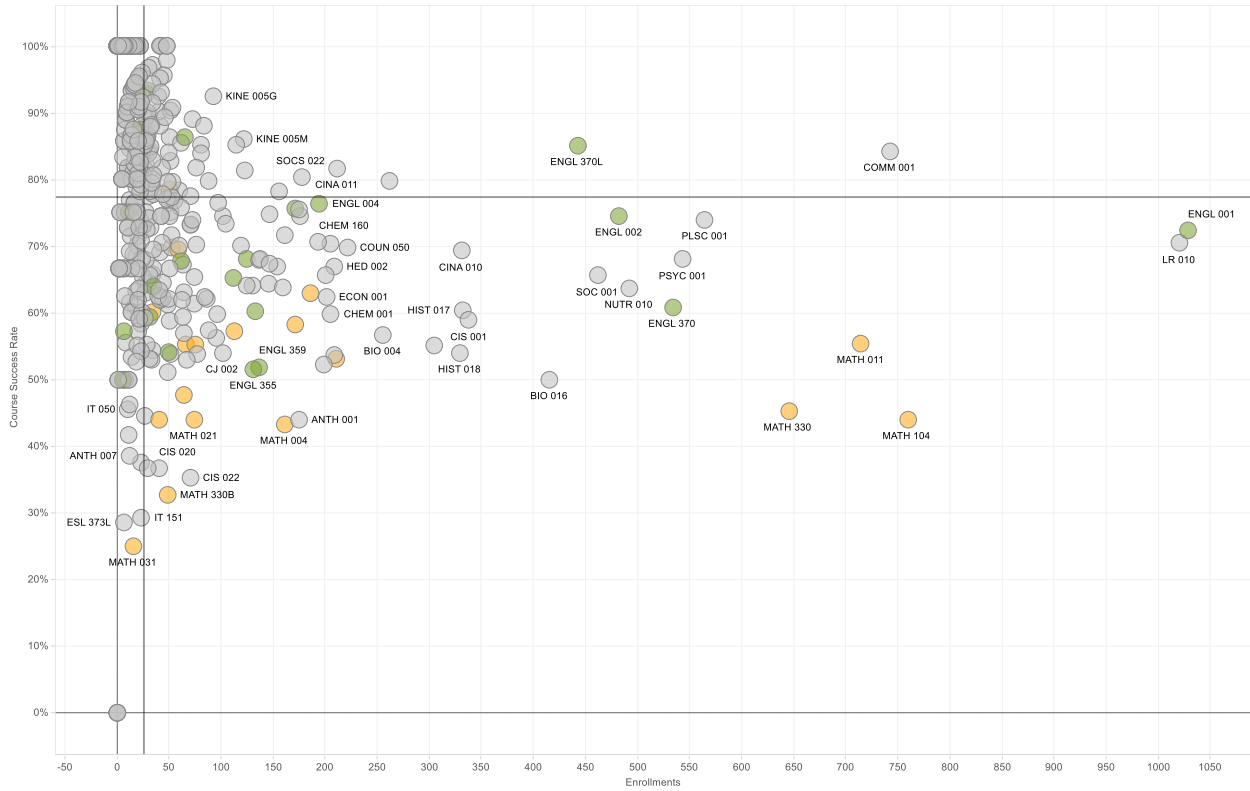
PERCENT CHANGE IN AVERAGE EFFICIENCY



Bar chart shows term to term percent change in efficiency

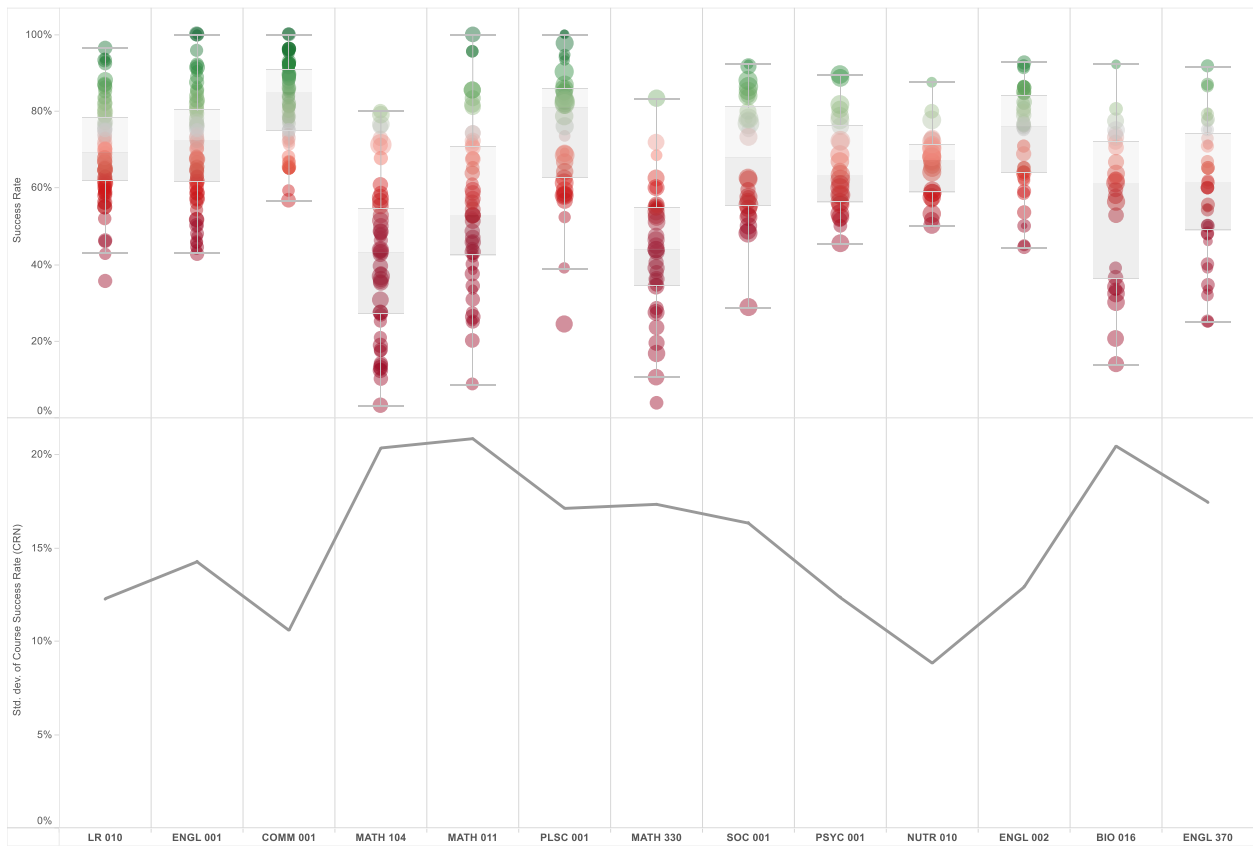
STUDENT SUCCESS AND EQUITY DATA

2015/2016 COURSE ENROLLMENT AND SUCCESS PLOT



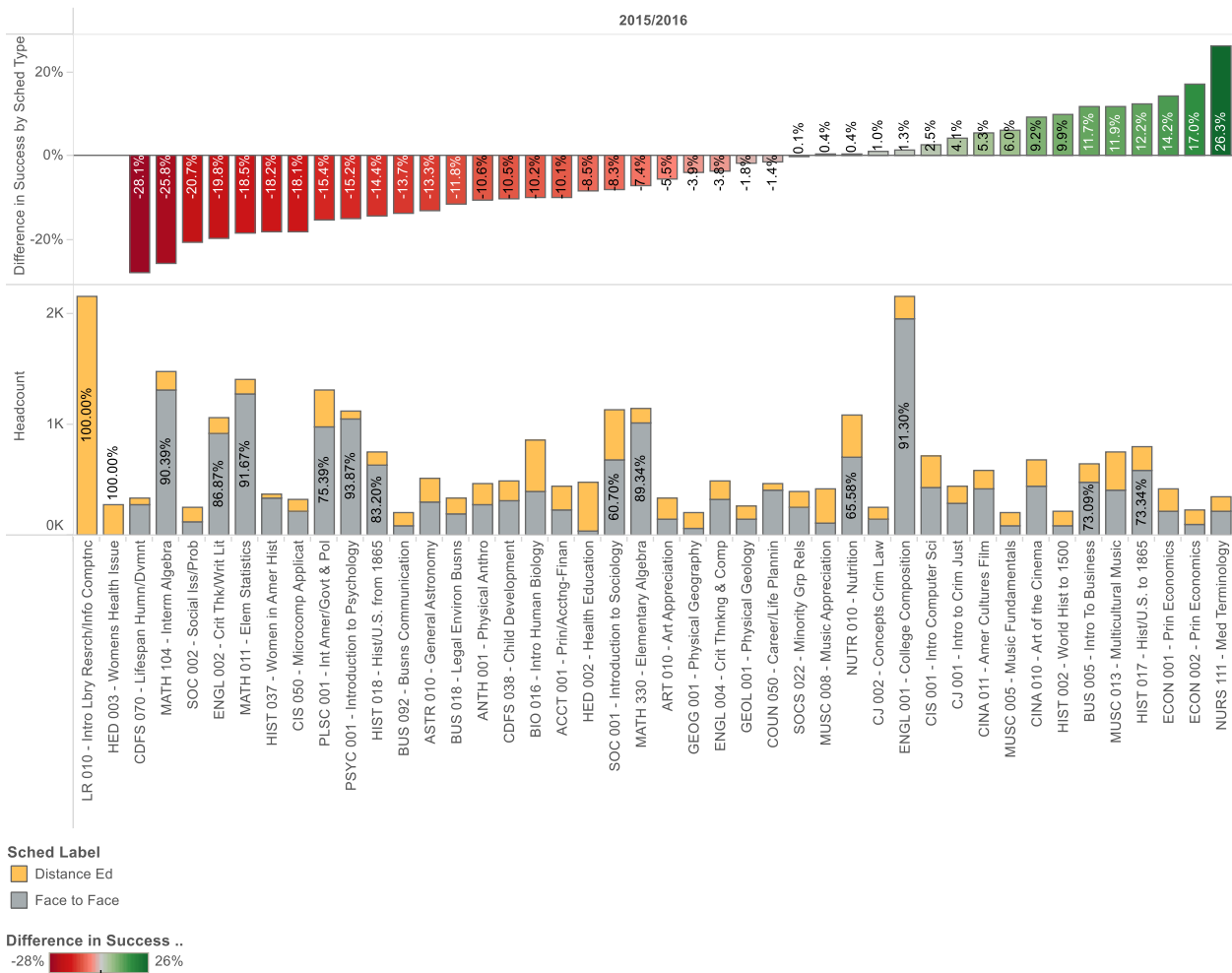
Scatter plot shows courses by total enrollment and success rate in 2015 and 2016. Math (yellow) and English (green) highlighted.

2015/2016 SECTION SUCCESS RATES VARIANCE



Upper chart shows section success rate while bottom chart shows standard deviation of section success rates for top 12 courses (based on enrollment)

2015/2016 ONLINE AND FACE TO FACE COMPARISON



Upper chart shows difference in success rates between online and face to face students. Lower chart shows headcount of students by schedule type.

DISPROPORTIONATE IMPACT TOP 12 CLASSES: TABLE B



Key
■ Highest
■ Impact
■ No Impact
■ Suppressed

Chart shows top 12 courses (second 6) success rates with disproportionate impact (80% of max) highlighted.