

Fall 2016 Enrollment Report

Data correct as of: 07-Sep-16 07:58:16

In Fall 2016 SCC offered 941 sections with 342 unique courses offered. This made available 31,390 seats that were filled by 25971 student enrollments generating 3,258.45 FTES (this may not include Positive Attendance FTES that are calculated at the end of the semester)

The following subject designations are excluded from this report: OCED, LC, TUTR

Section 1: Enrollment Statistics for Fall 2016

This section show enrollment statistics for Fall 2016. Each table shows

Sections: Count of number of sections offered

Over 90% Full: Count of number of sections that are over 90% full

% Over 90% Full: Percent of sections that are over 90% full

Under 50% Full: Count of sections that are under 50% full

% Under 50% Full: Percent of sections that are under 50% full

Seats: Total number of seats available to students

Enrollments: Total number of student enrollments

FTES: Total Full Time Equivalent Students

Average Fill Rate: The average of all sections fill rates

FTE Faculty: Number of Full Time Equivalent Faculty

FTEF Full Time: FTEF of Full Time Faculty

1.1: Division Level

	Division Level Statistics										
	Sections	Over 90% Full	% Over 90% Full	Under 50% Full	% Under 50% Full	Seats	Enrollments	FTES	Average Fill Rate	FTE Faculty	FTEF Full Time
Total	941	425	45%	95	10%	31,390	25,971	3,258	83	237	113
Liberal Arts	291	145	50%	20	7%	8,835	7,441	863	86	69.1	29.8
Mathematics and Science	234	109	47%	23	10%	7,275	6,324	1,139	85	69.9	35.0
Social & Behavioral Sciences	128	48	38%	17	13%	5,387	4,218	418	78	26.1	11.0
Applied Technology & Business	126	36	29%	21	17%	4,470	3,354	436	75	33.8	16.2
Health Sciences	94	43	46%	12	13%	3,390	2,701	279	81	28.6	18.0
IT & Learning Resources	45	33	73%	2	4%	1,350	1,303	43	97	3.0	0.1
Counseling & Spec. Services	14	8	57%	0	0%	425	412	39	99	3.1	1.0
Vacaville & Travis	9	3	33%	0	0%	258	218	42	84	3.0	2.0

1.2: Campus Level

Campus Level Statistics											
Sections	Over 90% Full	% Over 90% Full	Under 50% Full	% Under 50% Full	Seats	Enrollments	FTEs	Average Fill Rate	FTE Faculty	FTE Full Time	
Total	941	425	45%	95	10%	31,390	25,971	3,258	83	237	113
Main Campus - Fairfield	709	345	49%	67	9%	23,503	19,868	2,425	85	178	91
Vacaville Center	118	50	42%	14	12%	4,003	3,204	440	80	29	11
Vallejo Center	104	28	27%	12	12%	3,627	2,712	356	77	26	9
Travis Air Force Base	7	2	29%	1	14%	185	142	14	77	2	
Nut Tree Airport - Vacaville	2	0	0%	0	0%	48	34	23	71	2	2
Other	1	0	0%	1	100%	24	11	0	46	0	

1.3: Delivery Method Level

Delivery Method Level Statistics											
Sections	Over 90% Full	% Over 90% Full	Under 50% Full	% Under 50% Full	Seats	Enrollments	FTEs	Average Fill Rate	FTE Faculty	FTE Full Time	
Total	941	425	45%	95	10%	31,390	25,971	3,258	83	237	113
Lecture and/or discussion	434	201	46%	49	11%	15,406	12,469	1,337	83	93	39
Lecture/Lab	271	133	49%	15	6%	8,071	7,033	1,333	88	105	55
Online	162	73	45%	4	2%	6,147	5,353	479	88	28	14
Laboratory/Studio/Activity	52	15	29%	14	27%	1,504	966	90	70	9	4
Directed Study/Independ. Study	17	2	12%	13	76%	77	24	2	33	0	0
Hybrid	5	1	20%	0	0%	185	126	18	69	1	1

	Subject Area Level Statistics (Top 20 by Sections)										
	Sections	Over 90% Full	% Over 90% Full	Under 50% Full	% Under 50% Full	Seats	Enrollments	FTEs	Average Fill Rate	FTE Faculty	FTE Full Time
Total	941	425	45%	95	10%	31,390	25,971	3,258	83	237	113
English	125	78	62%	1	1%	3,475	3,263	398	94	30	12
Mathematics	104	58	56%	6	6%	3,413	3,121	552	90	29	16
Biological Sciences	57	22	39%	10	18%	1,578	1,314	264	78	17	10
Kinesiology	46	18	39%	1	2%	1,435	1,204	123	84	9	7
Learning Resources	45	33	73%	2	4%	1,350	1,303	43	97	3	0
Communication Studies	41	30	73%	2	5%	1,045	958	91	93	9	4
Computer & Info Science	32	7	22%	6	19%	1,081	760	91	69	7	4
Chemistry	29	17	59%	1	3%	780	717	181	93	13	5
Music	28	4	14%	8	29%	1,165	745	69	66	5	2
Art	26	12	46%	0	0%	764	687	103	89	7	5
History	25	12	48%	0	0%	1,155	999	100	86	5	1
Child Develop. & Fam. Studies	22	9	41%	3	14%	750	581	57	77	5	2
Political Science	22	6	27%	7	32%	931	672	67	68	4	2
Psychology	21	10	48%	0	0%	930	823	82	89	4	3
Criminal Justice	20	5	25%	5	25%	905	660	66	72	4	2
Nursing	19	6	32%	9	47%	815	468	25	60	12	7
Sociology	19	8	42%	2	11%	816	622	62	78	4	2
Spanish	15	7	47%	1	7%	445	387	54	87	4	2
Business	14	3	21%	0	0%	530	439	39	82	2	1
Counseling	14	8	57%	0	0%	425	412	39	99	3	1
Others	217	72	33%	31	14%	7,602	5,836	755	77	59	26

	Course Level Statistics (Top 20 by Sections Offered)										
	Sections	Over 90% Full	% Over 90% Full	Under 50% Full	% Under 50% Full	Seats	Enrollments	FTEs	Average Fill Rate	FTE Faculty	FTEF Full Time
Total	941	425	45%	95	10%	31,390	25,971	3,258	83	237	113
LR 010	45	33	73%	2	4%	1,350	1,303	43	97	3	0.1
ENGL 001	44	33	75%	1	2%	1,320	1,316	174	100	12	3.4
COMM 001	31	25	81%	0	0%	775	769	76	99	6	1.8
MATH 011	21	14	67%	0	0%	735	688	115	94	6	2.5
ENGL 002	19	12	63%	0	0%	570	504	67	88	5	2.7
MATH 104	18	13	72%	0	0%	630	642	129	102	6	3.7
MATH 330	17	8	47%	0	0%	680	586	118	86	6	3.2
PLSC 001	16	6	38%	4	25%	775	595	59	78	3	1.6
ENGL 360	13	12	92%	0	0%	325	330	52	102	4	1.8
PSYC 001	12	6	50%	0	0%	600	549	54	92	2	1.8
SOC 001	12	3	25%	1	8%	600	441	44	74	2	1.4
NUTR 010	11	9	82%	0	0%	550	518	52	94	2	1.8
ENGL 370	10	6	60%	0	0%	250	226	23	90	2	0.2
ENGL 370L	10	3	30%	0	0%	250	215	10	86	1	
BIO 004	9	9	100%	0	0%	216	266	80	123	5	3.6
BIO 016	9	1	11%	1	11%	450	302	30	67	2	1.2
ENGL 004	9	2	22%	0	0%	225	191	25	85	2	1.5
HIST 017	9	6	67%	0	0%	425	365	36	85	2	
CHEM 001	8	6	75%	0	0%	224	217	65	97	4	3.0
BIO 015	7	0	0%	0	0%	210	150	30	71	3	1.6
CDFS 038	7	5	71%	0	0%	245	220	22	90	1	0.4
CHEM 160	7	2	29%	0	0%	196	164	33	84	3	0.5
CIS 001	7	3	43%	0	0%	278	250	34	90	2	1.0
COUN 050	7	5	71%	0	0%	210	204	20	97	1	0.4
ENGL 310D	7	5	71%	0	0%	210	206	19	98	1	0.2
GEOL 001	7	2	29%	0	0%	210	164	16	78	1	1.2

Course Level Statistics (Top 20 by Sections Offered)											
Sections	Over 90% Full	% Over 90% Full	Under 50% Full	% Under 50% Full	Seats	Enrollments	FTEs	Average Fill Rate	FTE Faculty	FTE Full Time	
HIST 018	7	2	29%	0	0%	350	283	28	81	1	0.6
MUSC 013	7	2	29%	1	14%	350	295	30	84	1	0.2
OT 162	7	0	0%	3	43%	294	167	8	57	1	0.5
Others	548	192	35%	82	15%	17,887	13,845	1,766	78	145	71.3

Section 2: Historic Trend Data for Fall

This section shows a series of charts showing Fall trend line information for a number of measures. These include

Total FTES: Sum of all FTES in a term

Total FTEF: Sum of all FTEF in a term

FTE Students per FTE Faculty: FTES/FTEF

Spaces Available: Sum of all seats available in a term

Enrollments: Sum of all enrollments taken in a term

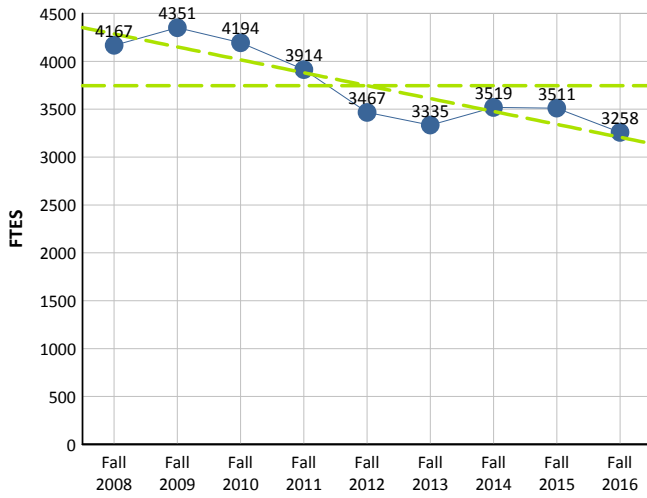
Median Fill Rate: Median of all sections fill rate

Unique Courses: Count of unique courses offered in a term

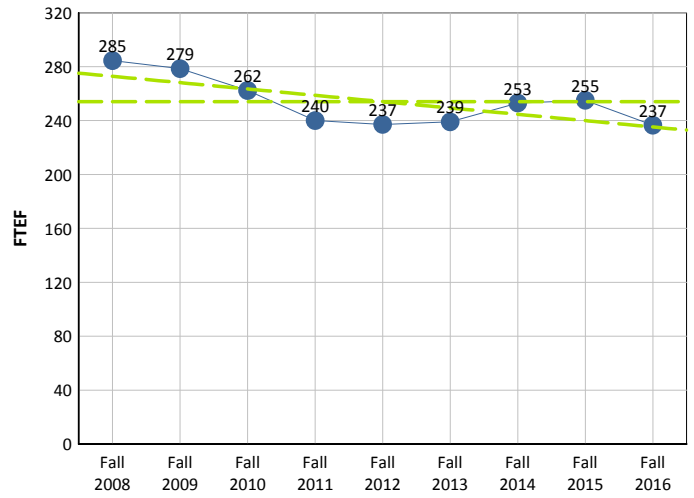
Sections Offered: Total sections offered in a term

% Under 50% Full: % of all sections with a fill rate below 50%

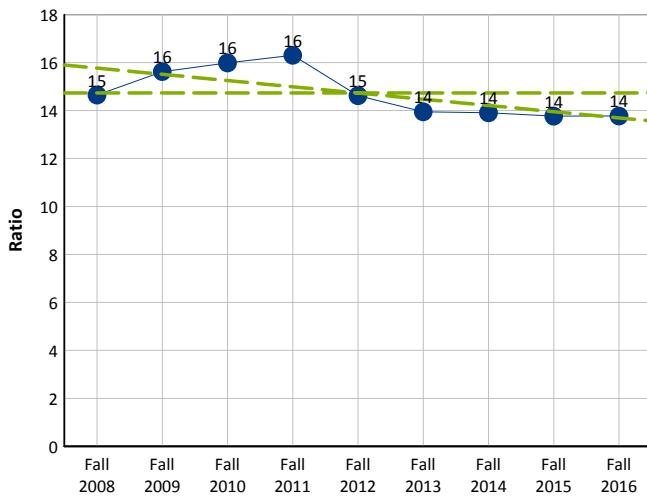
Total FTES



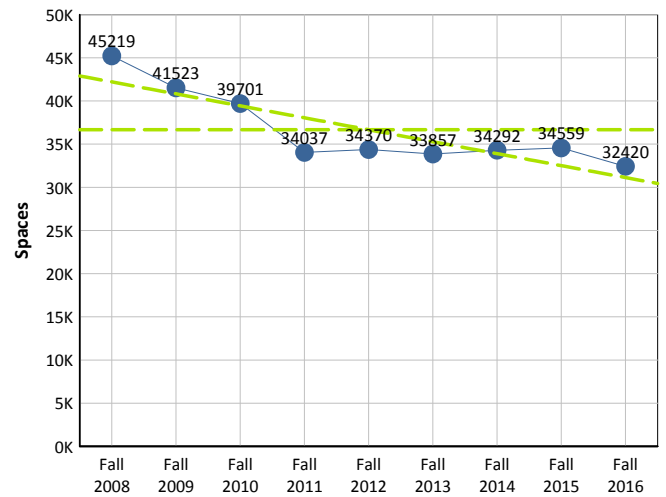
Total FTEF



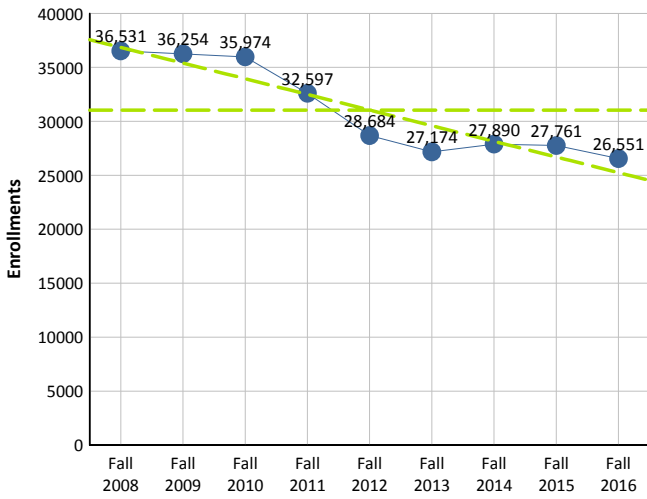
FTE Students per FTE Faculty



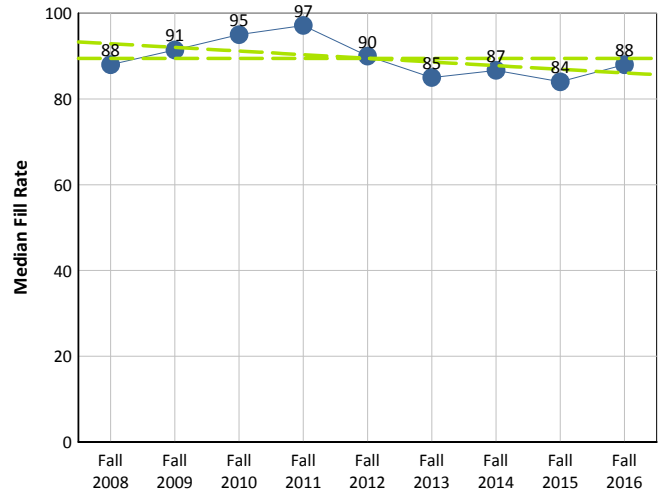
Spaces Available



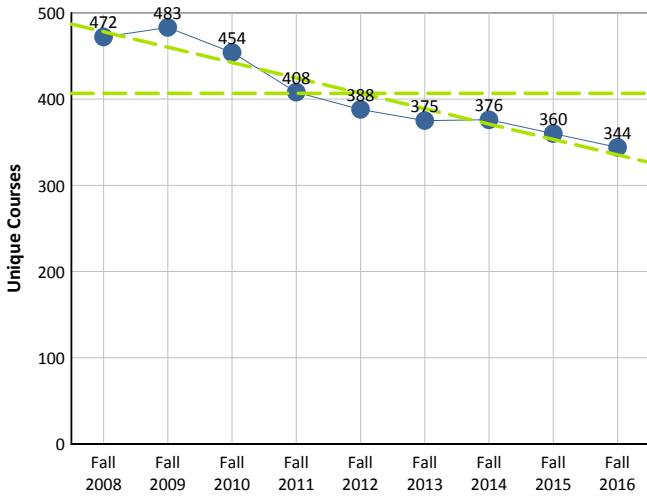
Enrollments



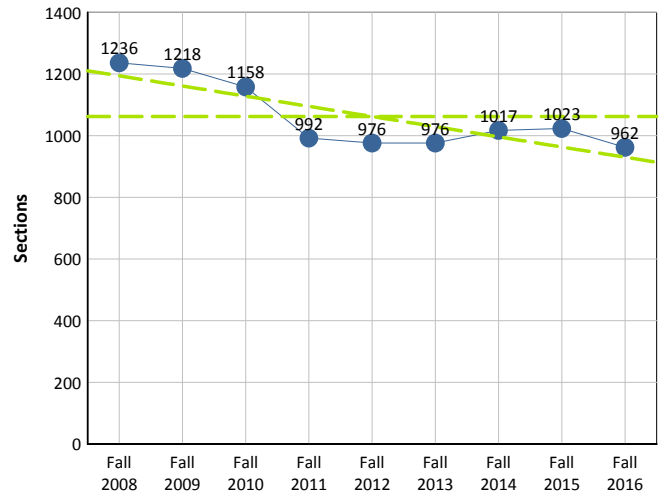
Median Fill Rate



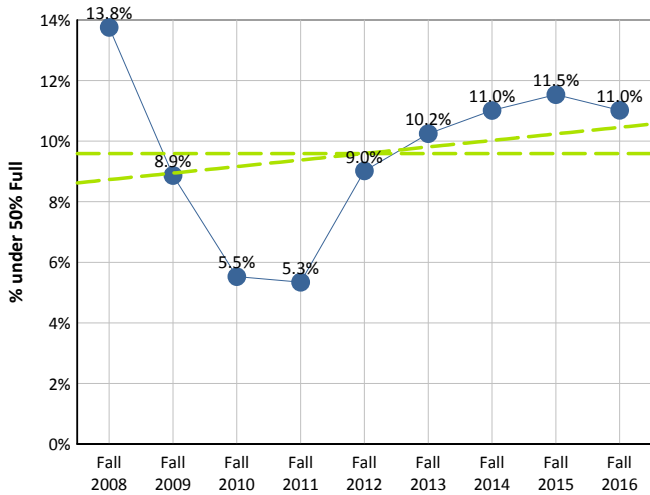
Unique Courses



Sections Offered



% Sections under 50% Full



% Sections over 90% Full

