

Fall 2016 New Student Success and Retention Data

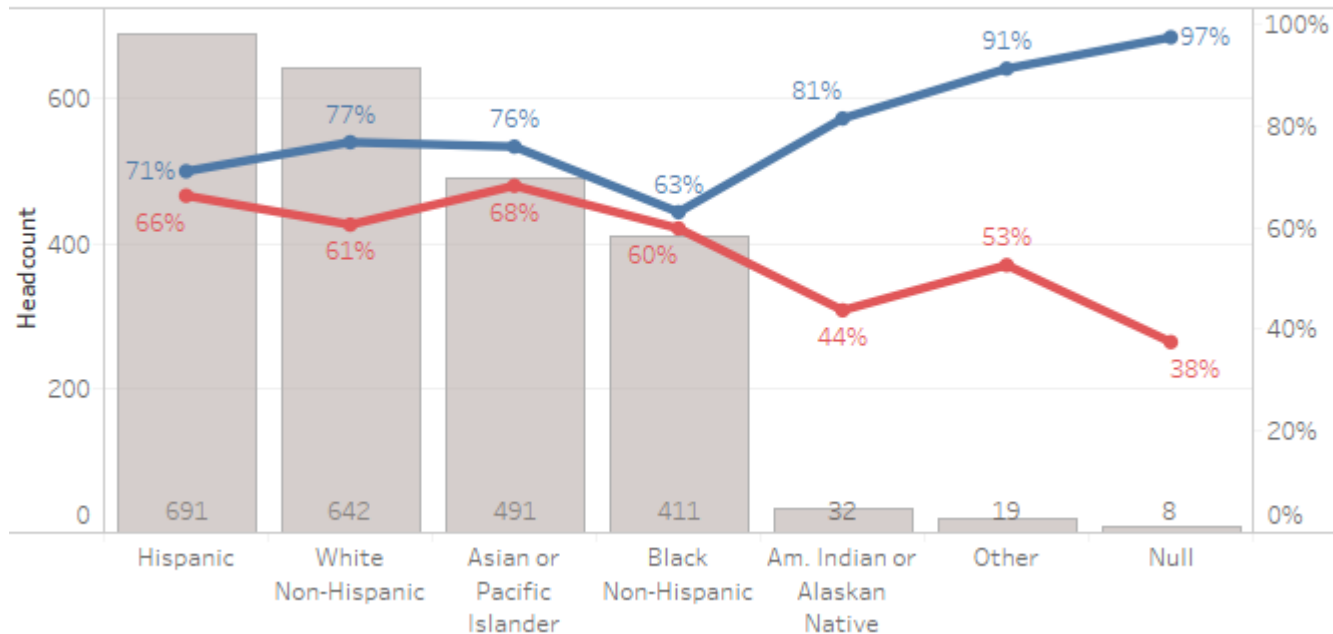
This report provides new student Fall 2016 retention to Spring 2017 (AKA Persistence) and success rates. Rates are showing for a variety of student and course measures.

- Headcount is displayed as grey bars
- Success rate is displayed as a blue line
- Retention rate is displayed as a red line.

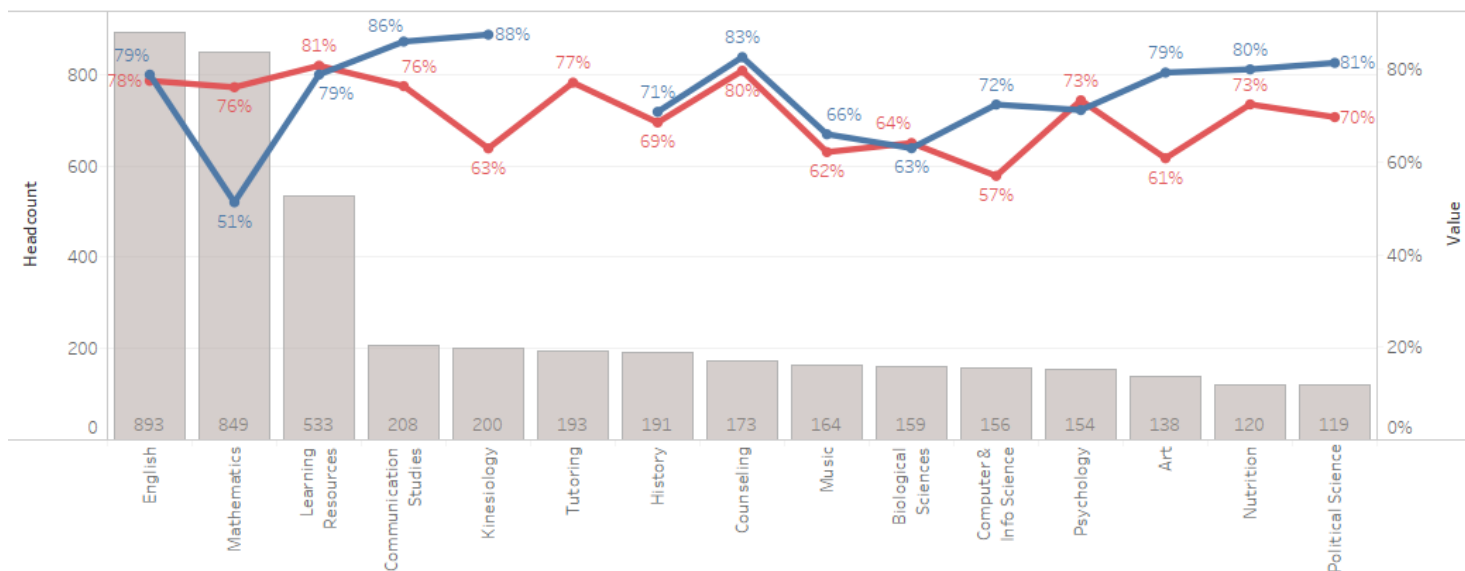
Measure Names

- Headcount
- Entering Success Rate
- Retained

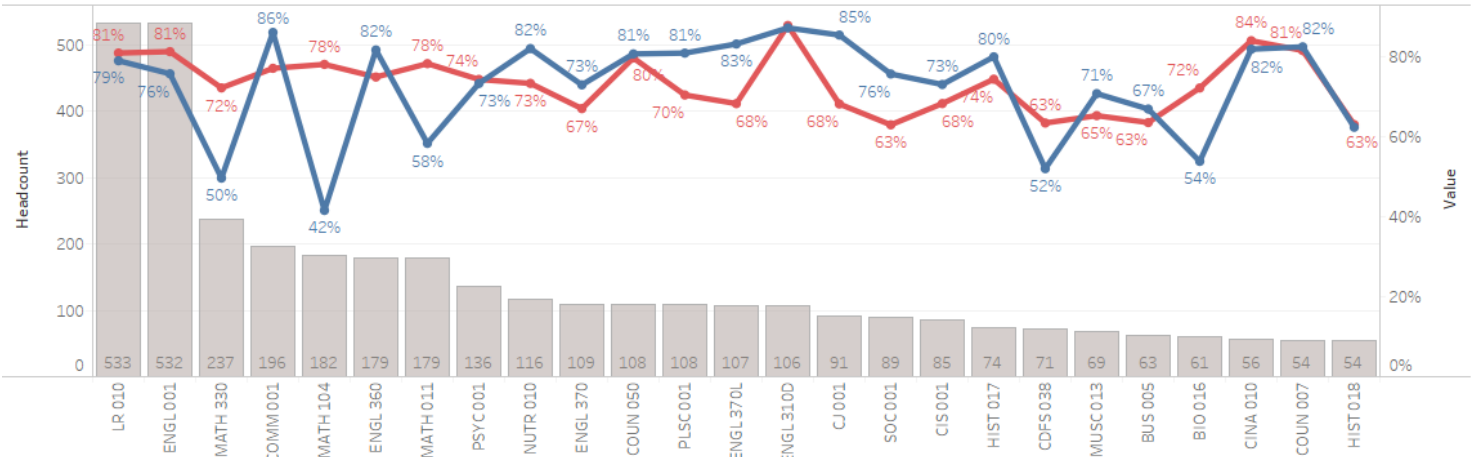
By Ethnicity



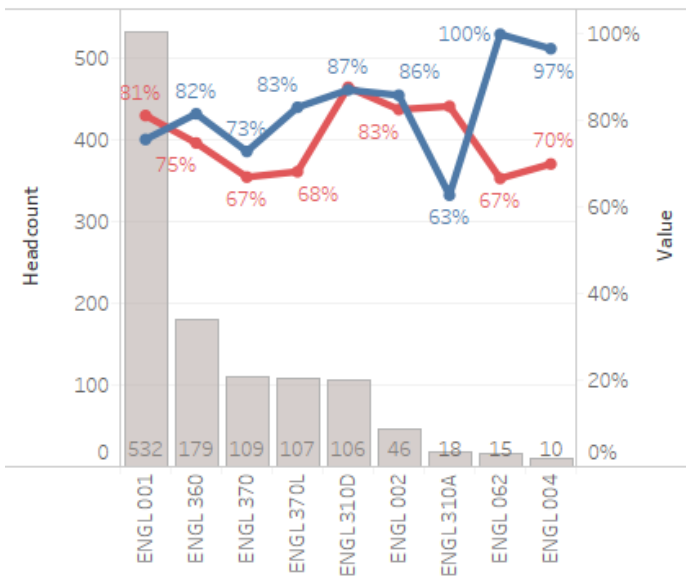
Entering Subject



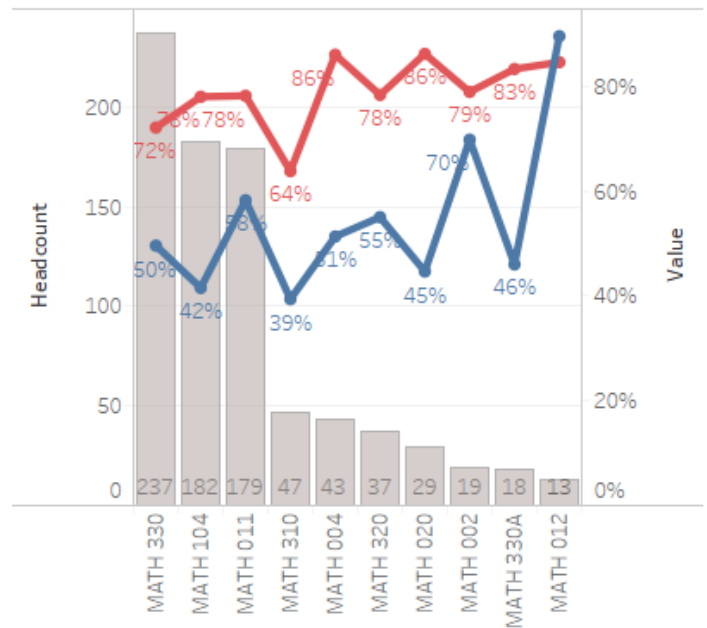
Entering Course



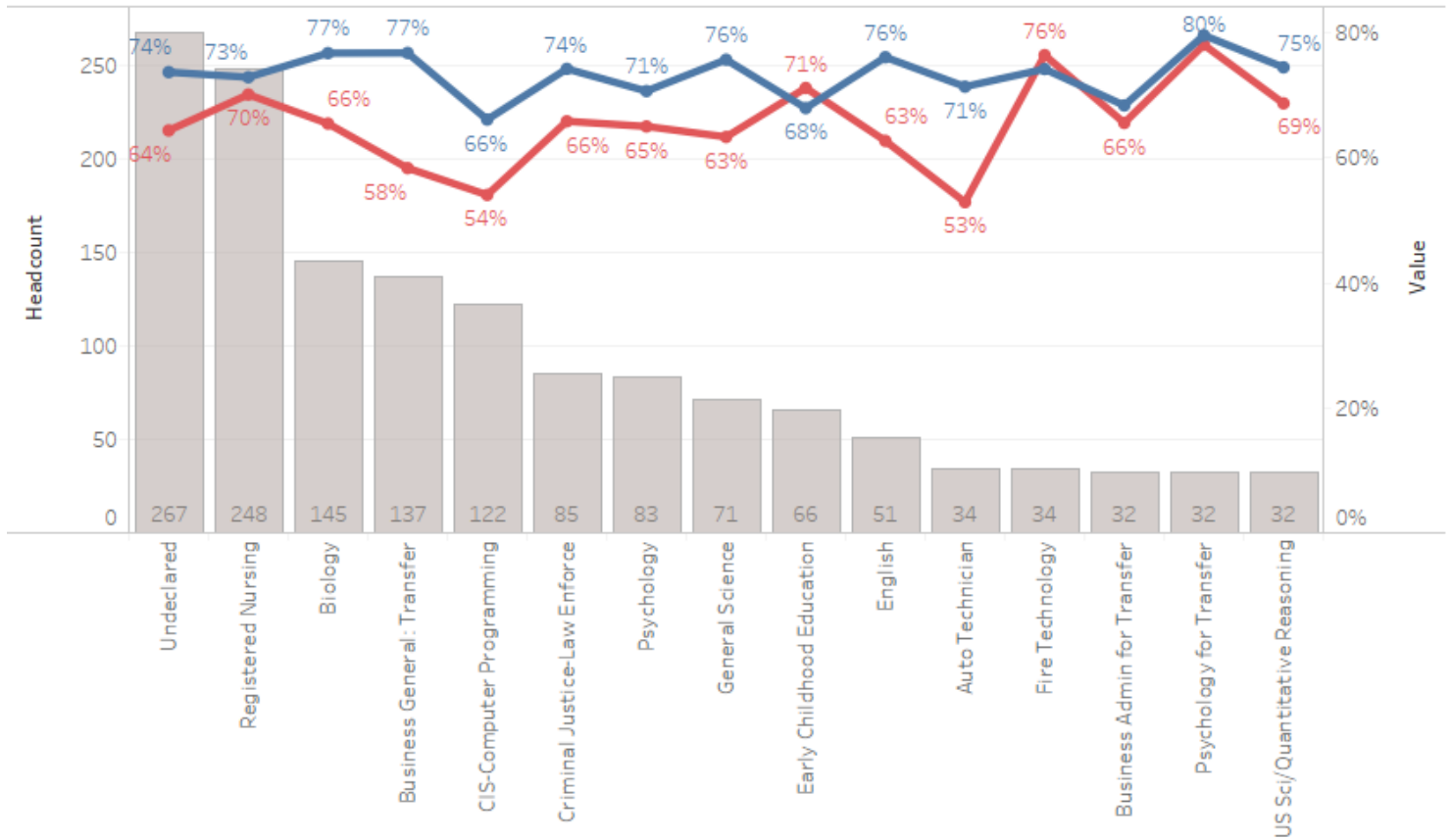
English Course



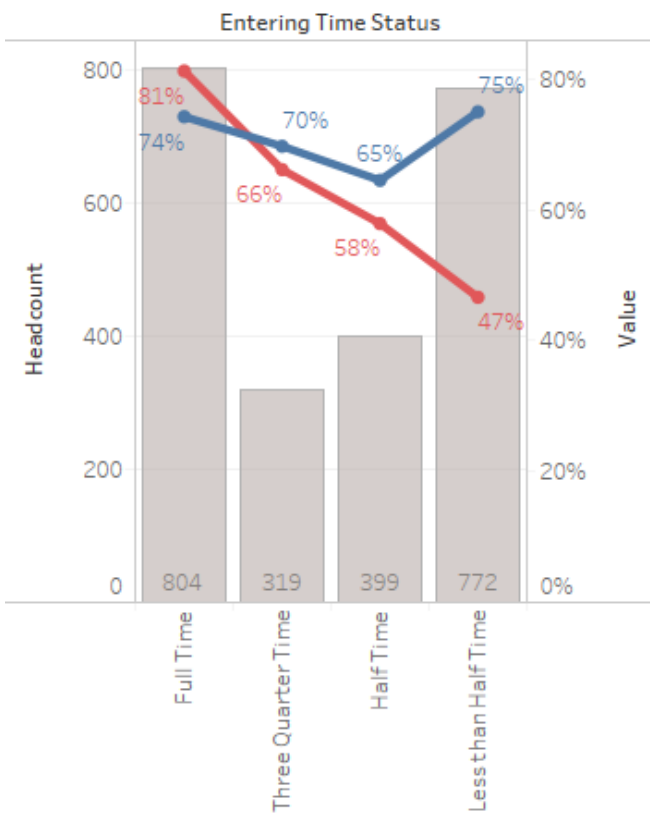
Math Course



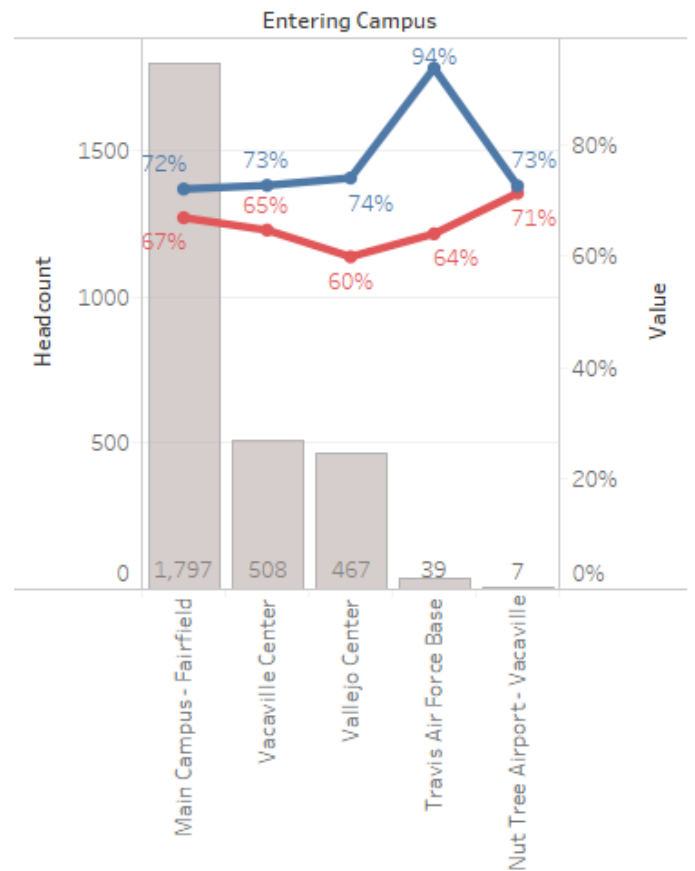
Declared Major



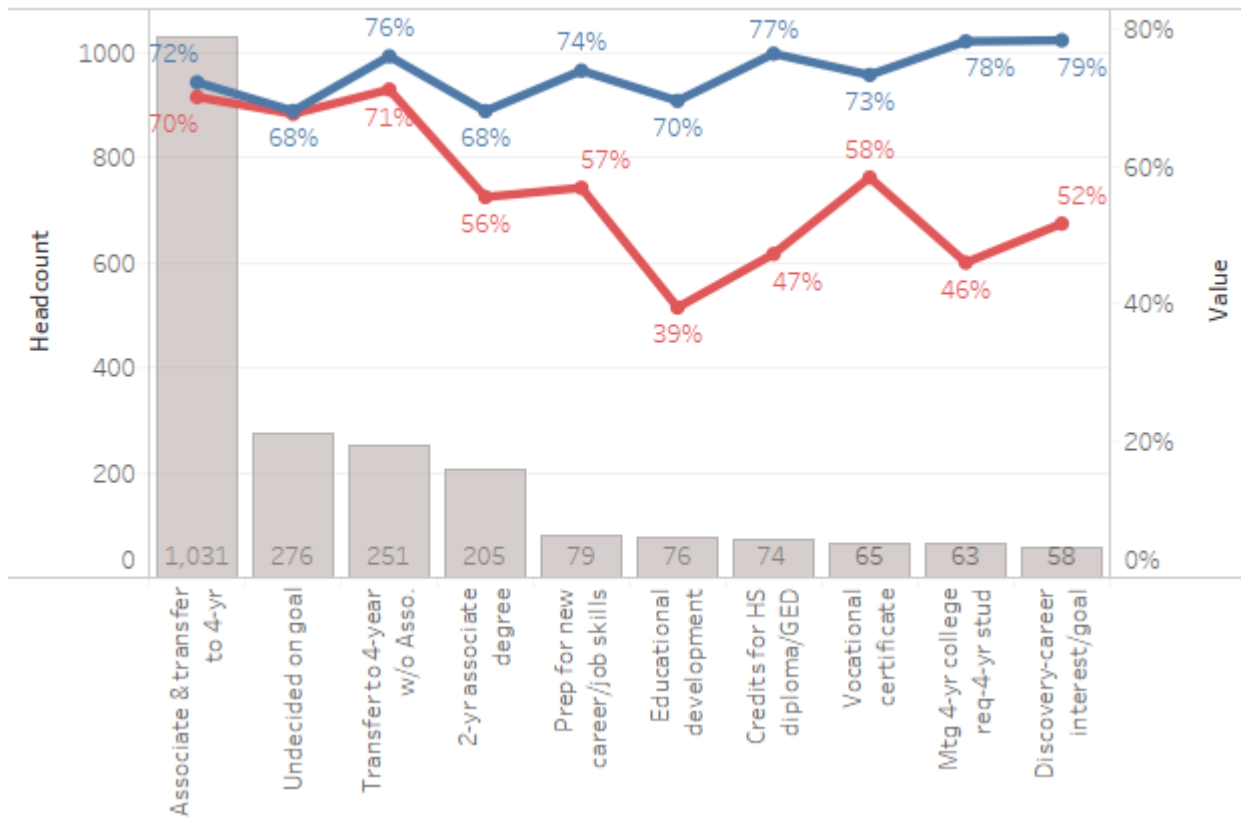
Time Status



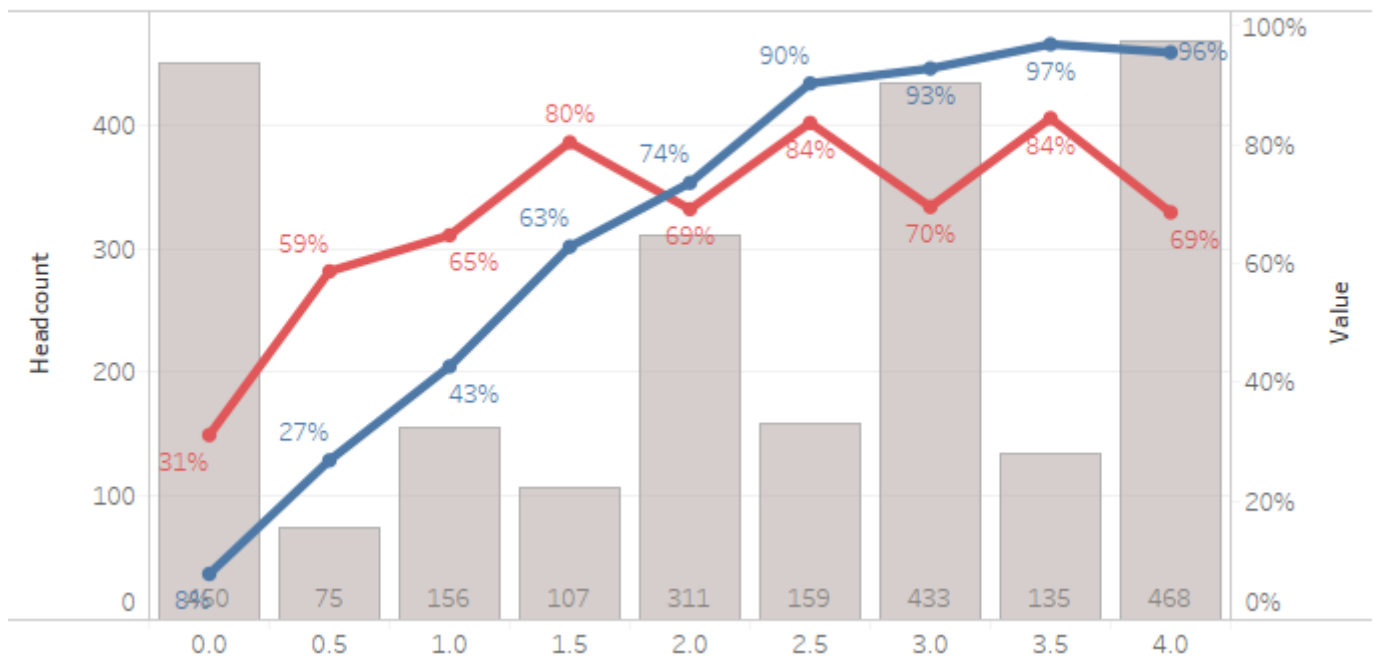
Campus



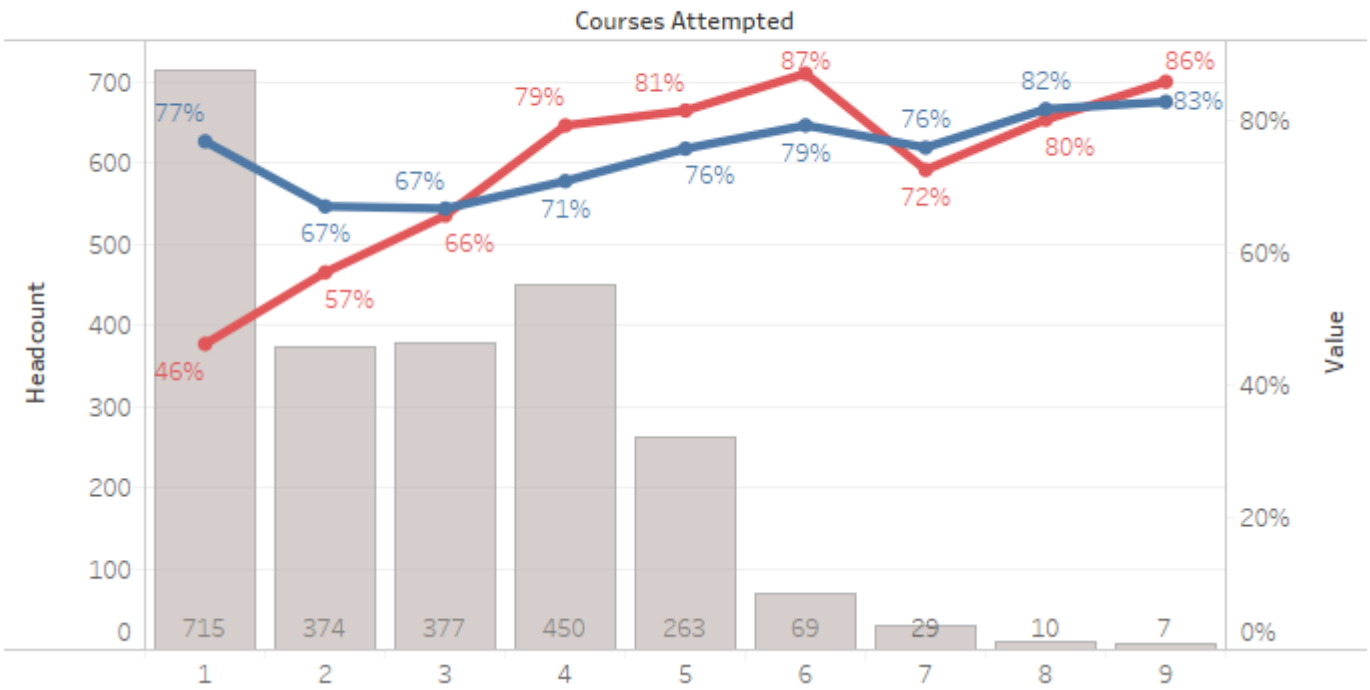
Ed Goal



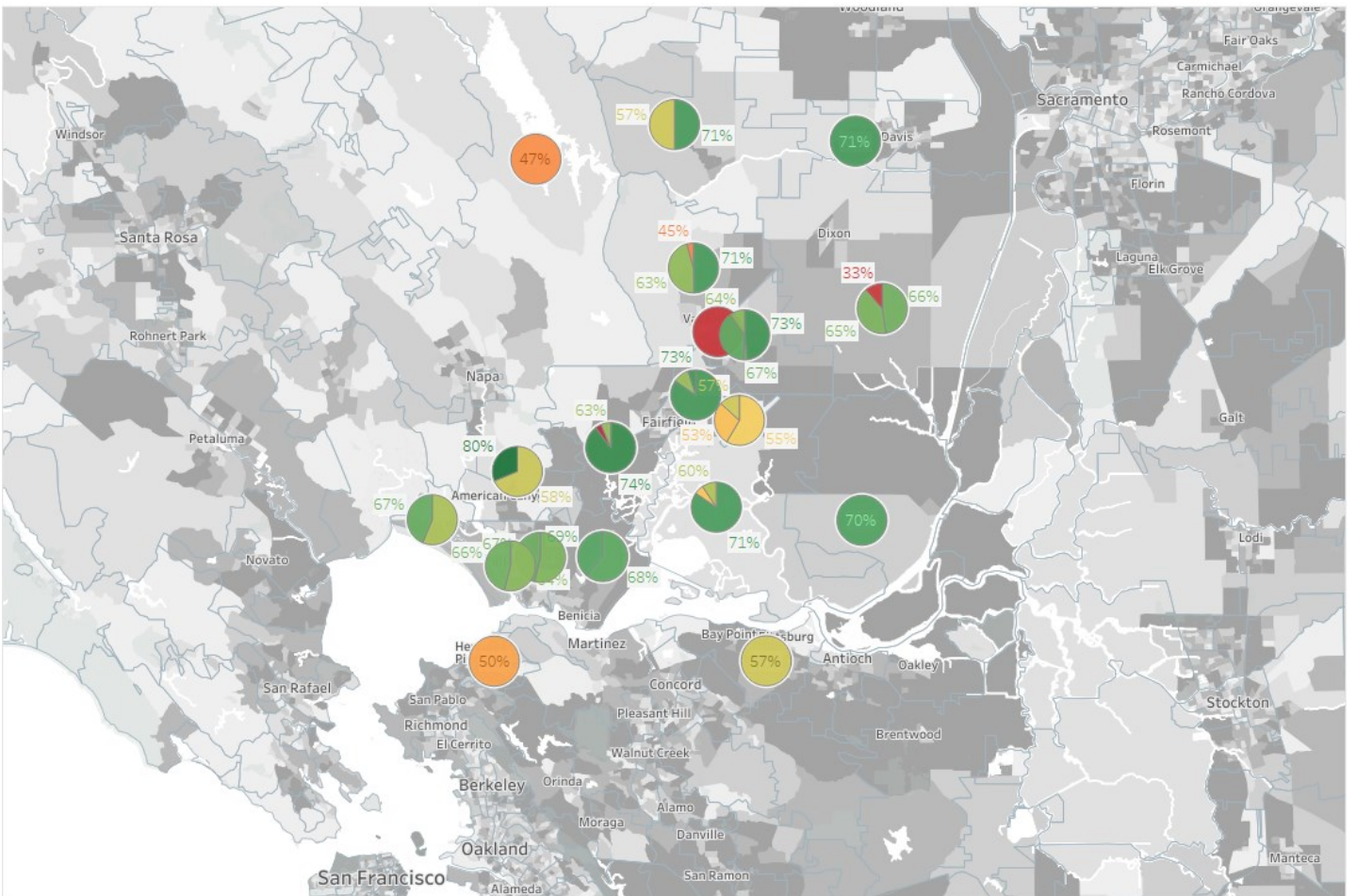
GPA



Courses Attempted



Map by Campus



- 2017 Population
- 0 to 849
 - 849 to 1,120
 - 1,120 to 1,450
 - 1,450 to 1,980
 - 1,980 to 47,700

