

# Program Review Data

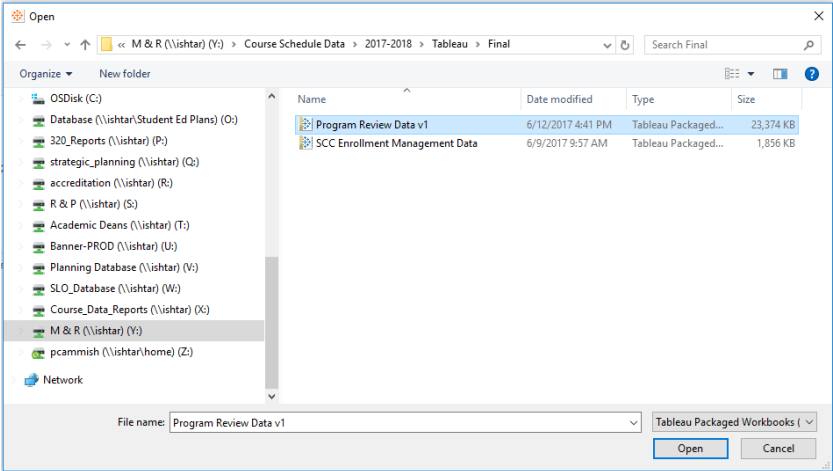
## Introduction

Program review data is easily accessible in Tableau Reader. Tableau Reader can be downloaded from

<https://www.tableau.com/products/reader/download>

### Open Tableau Reader

#### Select File > Open



Navigate to the file that you want to Tableau Packaged Workbook that you want to open (in this case Program Review Data) and click open.

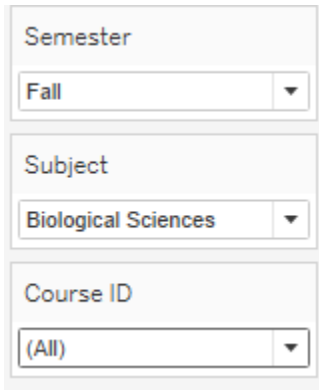
## Navigating

You can select sheets using the tabs at the bottom or the worksheet or selecting Window menu.

Sections Offered	Headcount	FTES	Number of Different Majors	Majors	Sections Offered Pattern	Headcount Pattern	FTES Pattern	Pop Served Gender
------------------	-----------	------	----------------------------	--------	--------------------------	-------------------	--------------	-------------------

## Filtering

You can use the filters on the right hand side to change the data that is displayed



Semester  
Fall

Subject  
Biological Sciences

Course ID  
(All)

## Copy and Exporting Data

You can use Worksheet > Copy to copy data in a variety of formats or Worksheet > Export to export data in a variety of formats.

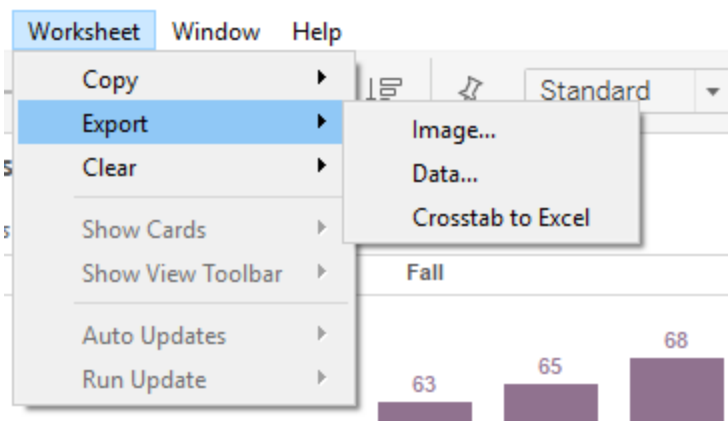


Image: a JPEG file for export or pasting into documents

Data: The raw data behind the currently selected visualization

Crosstab: The data close to the format as presented

# Sections Offered

Program Review required data section 1.3 Enrollment

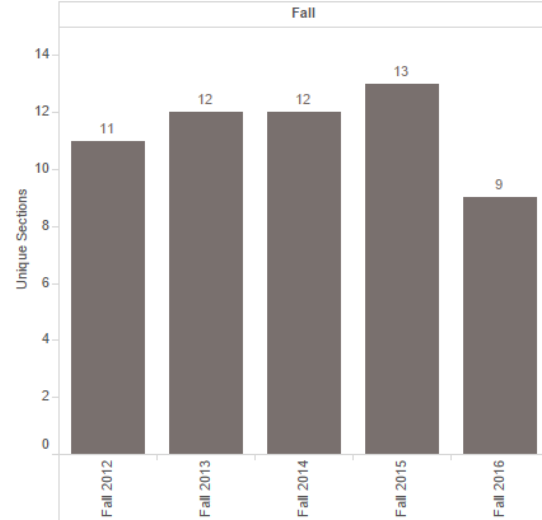
This tab shows the number of sections offered in a particular term (unique count of CRN).

You can filter the data by

- Semester
- Subject Area
- Course ID

## Sections Offered (Accounting)

Chart shows number of sections offered by semester.



# Headcount

Program Review required data section 1.3 Enrollment

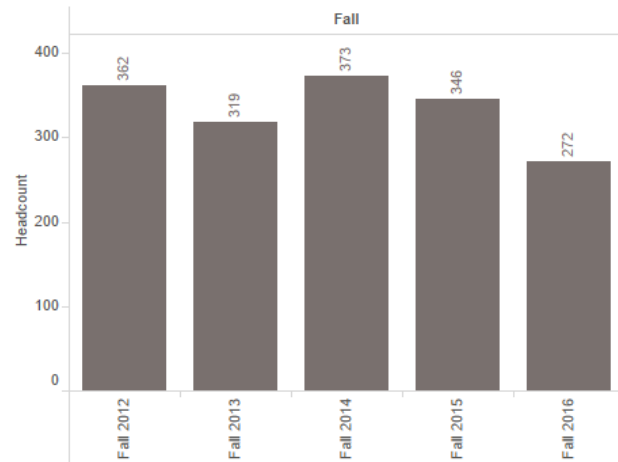
This tab shows the number of unique students enrolled in a particular term (unique count of Student ID).

You can filter the data by

- Student Major
- Semester
- Subject Area
- Course ID

## Headcount - Accounting

Chart shows student headcount by Semester within Accounting



# FTES

Program Review required data section 1.3 Enrollment

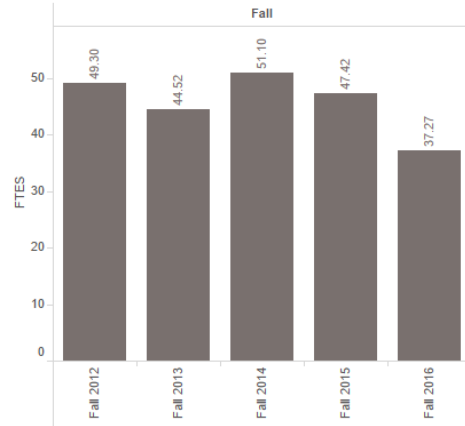
This tab shows the total FTES offered in a particular subject area by term (sum of FTES).

You can filter the data by

- Semester
- Subject Area
- Course ID

## FTES (Accounting)

Chart shows total FTES by Semester within Accounting



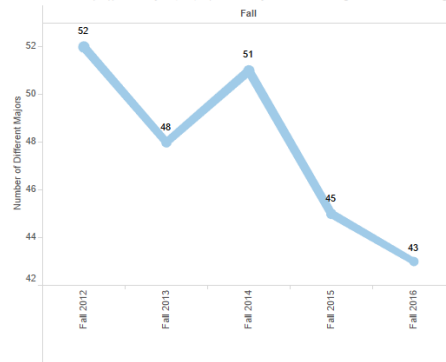
# Number of Different Majors

Program Review required data section 1.3 Enrollment

This tab shows the number of different majors (unique count of student major) represented by all students enrolled in subject area by term.

## Number of Different Majors - Accounting

Chart shows count of different majors (line) represented by all students taking courses in Accounting



# Declared Majors

Program Review required data section 1.3 Enrollment

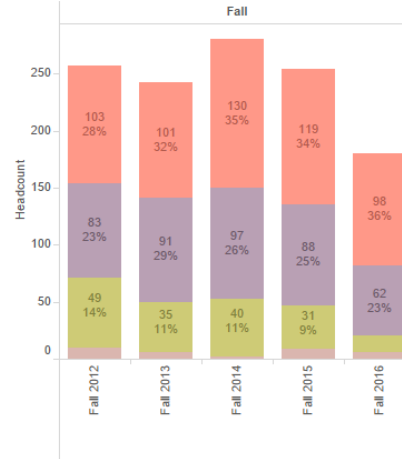
This tab shows the number of students (label also shows % of total) by major (unique count of Student ID by declared major).

You can filter the data by

- Rank of Major (e.g only show top 5 majors)
- Semester
- Major
- Subject Area
- Course ID

## Majors - Accounting

Upper chart shows total headcount by major (bar color) for students taking courses in Accounting



# Sections Offered Pattern

Program Review required data section 1.3 Enrollment

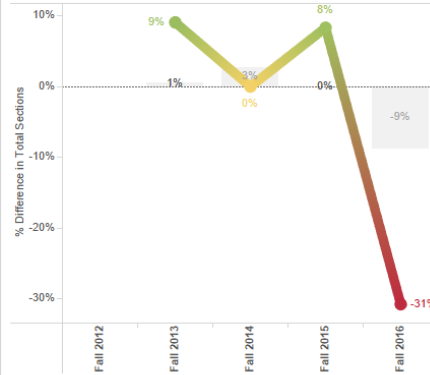
This tab shows the percent change in section count from previous value for a particular term (% difference in unique count of CRN). The line shows for the selected Subject Area while the gray bar represents the institution as a whole

You can filter the data by

- Semester
- Subject Area

## Sections Offered Pattern (Accounting)

Chart shows total percent change in section offerings within Accounting (line) and % change for college (bar)



# Headcount Pattern

Program Review required data section 1.3 Enrollment

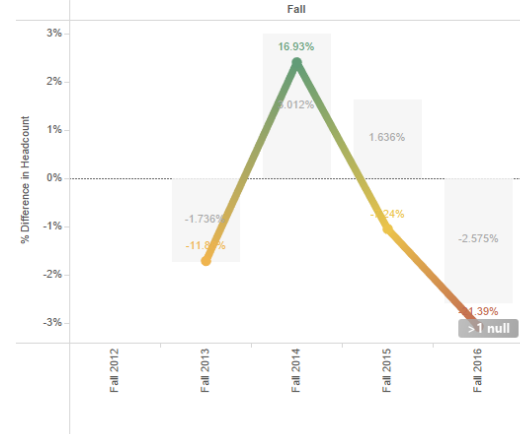
This tab shows the percent change number of unique students enrolled from previous value in a particular term (% difference unique count of Student ID).

You can filter the data by

- Student Major
- Semester
- Subject Area

Headcount Pattern - Accounting

Chart shows total percent change in headcounts within Accounting (line) and % change for college (bar)



# FTES Pattern

Program Review required data section 1.3 Enrollment

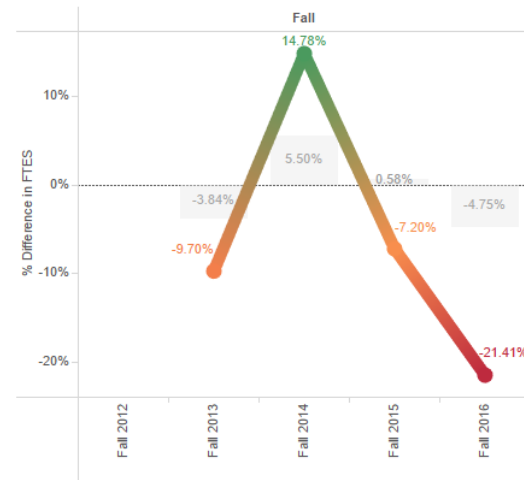
This tab shows the percent change in the sum of FTES from previous value in a certain term. (% difference in Sum FTES)

You can filter the data by

- Semester
- Subject Area
- Course ID

FTES Pattern Accounting

Chart shows total percent change by Semester within Accounting (line) and total for college (bar)



# Population Served - Gender

Program Review required data section 1.4 Population Served

This tab shows the percent of students by gender (distinct count of Student ID). The triangle shows within the Subject Area while the grey bars show within the institution as a whole. The coloration of the triangle represents possible disproportionate impact.

You can filter the data by

- Semester
- Subject Area
- Gender

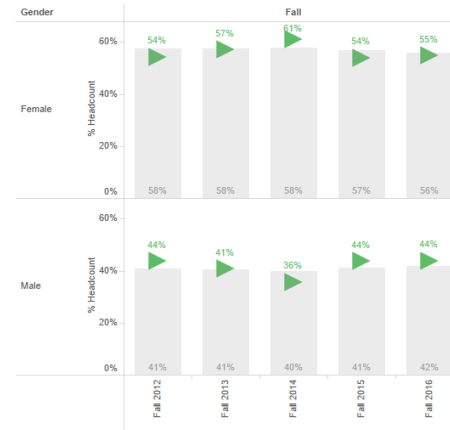
You can amend by parameters

**Only show groups over:** Will only display data if the size of the student group is over this parameter – use this to filter out small groups of students

**Disp Impact Threshold:** Can set the threshold for a disproportionate impact – this is usually set to 80% meaning the proportion of the Subject Area student group should be within 80% of the proportion of the institution group.

Pop Served Gender (Accounting)

Chart shows % headcount by gender (triangle represents within discipline, grey bar within institution). Disproportionate impact is shown by color of triangle. Only shows student groups greater than 5 students



Disproportionate Impact Color Key

- Green No
- Blue Over
- Orange Yes

# Population Served – Age Group

Program Review required data section 1.4 Population Served

This tab shows the percent of students by age group (distinct count of Student ID). The triangle shows within the Subject Area while the grey bars show within the institution as a whole. The coloration of the triangle represents possible disproportionate impact.

You can filter the data by

- Semester
- Subject Area
- Age Group

You can amend by parameters

**Only show groups over:** Will only display data if the size of the student group is over this parameter – use this to filter out small groups of students

**Disp Impact Threshold:** Can set the threshold for a disproportionate impact – this is usually set to 80% meaning the proportion of the Subject Area student group should be within 80% of the proportion of the institution group.

Pop Served Age (Accounting)

Chart shows % Headcount by age group (triangle represents within discipline, grey bar within institution). Disproportionate Only shows student groups greater than 5 students



Disproportionate Impact Color Key

- No
- Over
- Yes



# Population Served – Ethnicity

Program Review required data section 1.4 Population Served

This tab shows the percent of students by ethnicity (distinct count of Student ID). The triangle shows within the Subject Area while the grey bars show within the institution as a whole. The coloration of the triangle represents possible disproportionate impact.

You can filter the data by

- Semester
- Subject Area
- Ethnicity

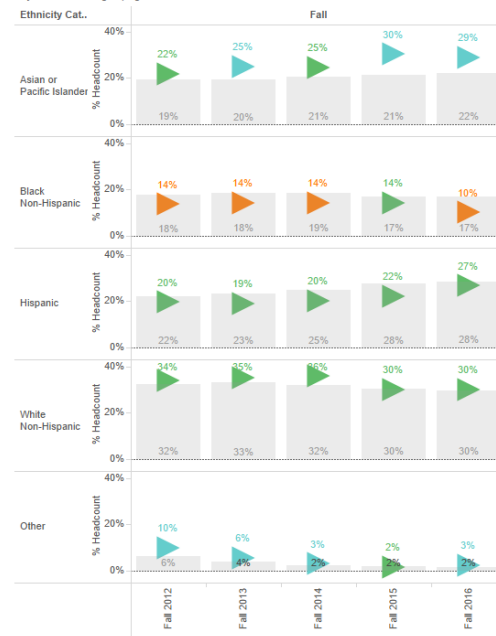
You can amend by parameters

**Only show groups over:** Will only display data if the size of the student group is over this parameter – use this to filter out small groups of students

**Disp Impact Threshold:** Can set the threshold for a disproportionate impact – this is usually set to 80% meaning the proportion of the Subject Area student group should be within 80% of the proportion of the institution group.

Pop Served Ethnicity (Accounting)

Chart shows % headcount by ethnicity (triangle represents within discipline, grey bar within institution). Disproportionate impact only shows student groups greater than 5 students



Disproportionate Impact Color Key

- No
- Over
- Yes

## Enrollment Trends – Gender

Program Review required data section 1.4 Population Served

This tab shows the number of students (label also shows % of total) by gender (unique count of Student ID by gender).

You can filter the data by

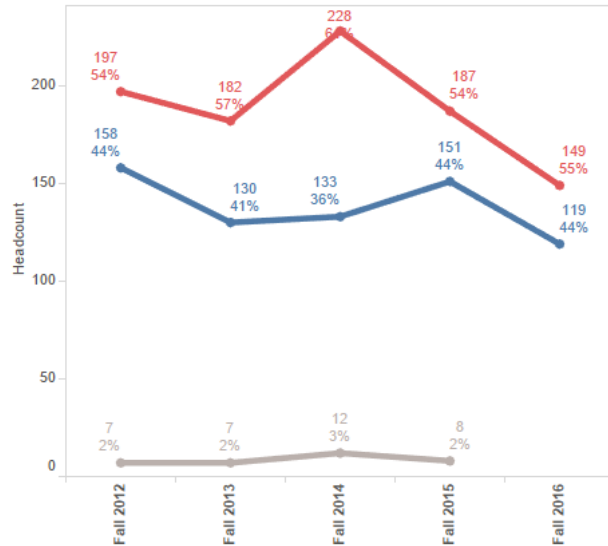
- Semester
- Subject Area
- Course ID
- Gender

You can amend by parameters

**Only show groups over:** Will only display data if the size of the student group is over this parameter – use this to filter out small groups of students

### Enrollment Trends Gender (Accounting)

Chart shows headcount by gender.  
Only shows student groups greater than 6 students



## Enrollment Trends – Age Group

Program Review required data section 1.4 Population Served

This tab shows the number of students (label also shows % of total) by age group (unique count of Student ID by age group).

You can filter the data by

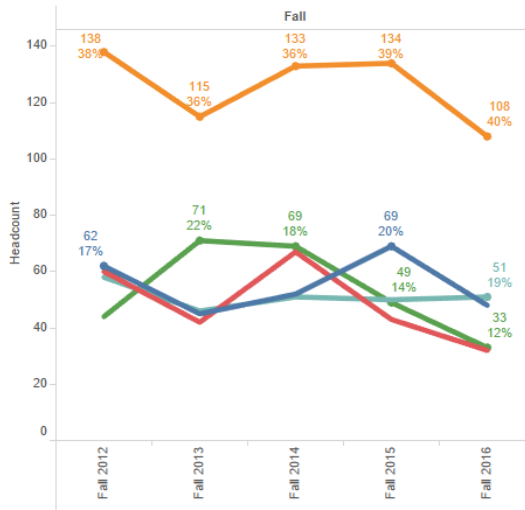
- Semester
- Subject Area
- Course ID
- Age Group

You can amend by parameters

**Only show groups over:** Will only display data if the size of the student group is over this parameter – use this to filter out small groups of students

### Enrollment Trends Age Group (Accounting)

Chart shows headcount by age group.  
Only shows student groups greater than 6 students



## Enrollment Trends – Ethnicity

Program Review required data section 1.4 Population Served

This tab shows the number of students (label also shows % of total) by ethnicity (unique count of Student ID by ethnicity).

You can filter the data by

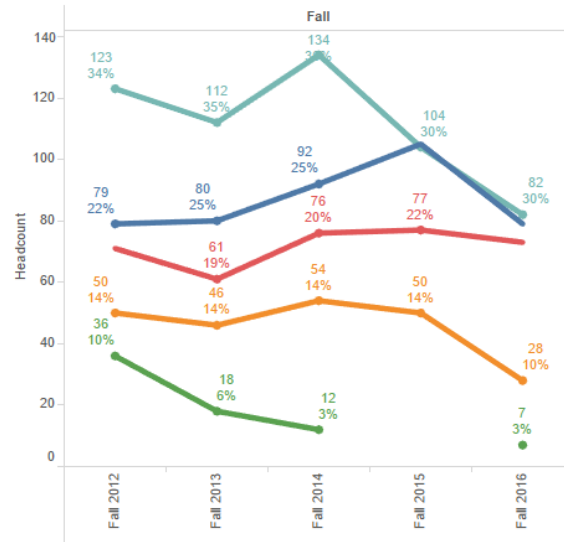
- Semester
- Subject Area
- Course ID
- Ethnicity

You can amend by parameters

**Only show groups over:** Will only display data if the size of the student group is over this parameter – use this to filter out small groups of students

### Enrollment Trends Ethnicity (Accounting)

Chart shows headcount by ethnicity.  
Only shows student groups greater than 6 students



## Student Sequencing

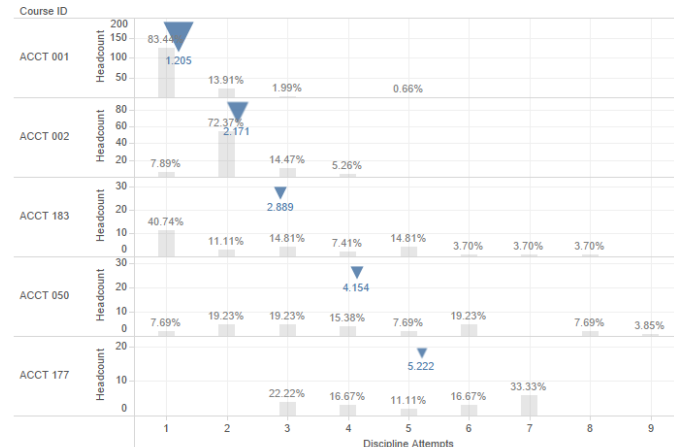
Program Review supplemental data section 3.1 Scheduling and Sequencing

This tab shows the number of students by attempt number in the subject area, by course. It shows which course students are most likely to attempt first, second, third, etc within a particular subject area. The grey bar shows the percent of students making a particular attempt number while the blue triangle shows the average for that course. You can filter by

- Semester
- Term (recommend only show one term at a time)
- Subject
- Student Major

### Student Sequencing (Accounting - Fall 2016)

Chart shows % of students by course and attempt number in sequence, blue triangle shows average attempt number. Shows student major - All



## Scheduling

Program Review supplemental data section 3.1 Scheduling and Sequencing

This tab shows the number of sections offered by course ID and campus schedule type.

You can filter by

- Semester
- Subject
- Course ID
- Campus Schedule Type

### Scheduling (Fall)

Chart shows number of sections offered by course id, campus and semester.

Course ID	Campus Sched Type	Fall 2012	Fall 2013	Fall 2014	Fall 2015	Fall 2016
ACCT 001	Main Campus - Fairfield	2	2	3	3	2
	Online/Hybrid	2	3	3	2	2
	Vacaville Center	1	1	1	1	
ACCT 002	Main Campus - Fairfield	2	2	1	2	2
	Online/Hybrid	1	1	1	1	
	Vacaville Center	1				
ACCT 050	Main Campus - Fairfield	1	1	1	1	1
ACCT 176	Main Campus - Fairfield				1	
ACCT 183	Main Campus - Fairfield	1	1	1	1	1
ACCT 177	Main Campus - Fairfield			1	1	1

## Fill Rates Distribution

Program Review required data section 3.4 Fill Rates/Class Size

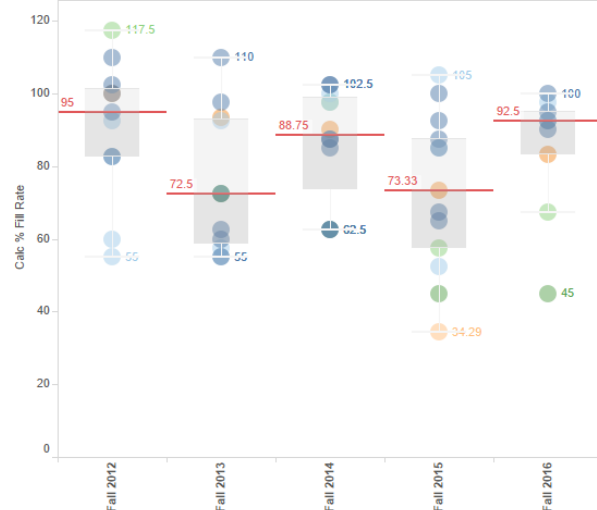
This tab shows the fill rate by section within the subject area. The color of the circle denotes the course ID, a box plot shows the distribution with the median on the red line.

You can filter by

- Semester
- Campus Schedule Type
- Subject
- Course ID

### Fill Rates Distribution (Accounting)

Chart shows fill rates by course modality (upper chart shows individual sections with boxplot median in red line)



## Fill Rates Median by Location

Program Review required data section 3.4 Fill Rates/Class Size

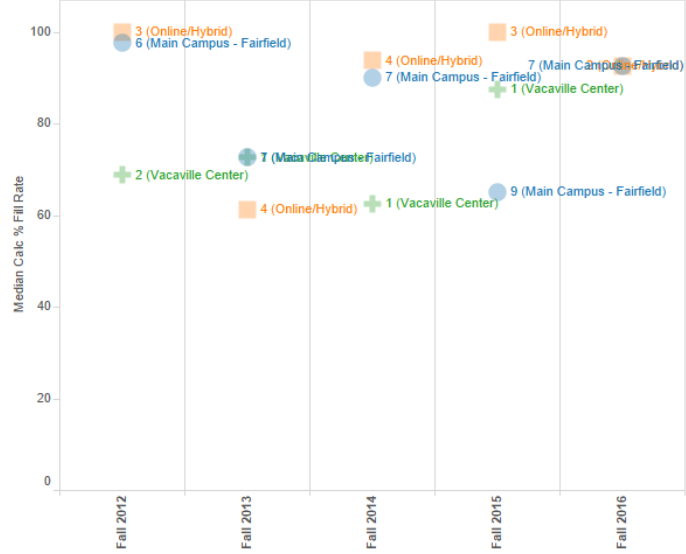
This tab shows the median fill rate by location within the subject area. The color of the circle denotes the location, label shows number of sections offered at location

You can filter by

- Campus Schedule Type
- Semester
- Subject
- Course ID

Fill Rates Median by Location (Accounting)

Chart shows median fill rates by course location



## Fill Rates Median by Course ID

Program Review required data section 3.4 Fill Rates/Class Size

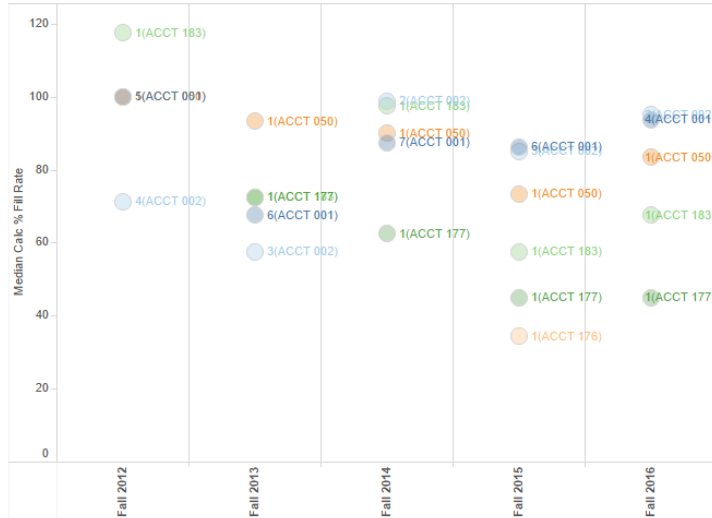
This tab shows the median fill rate by location. The color of the circle denotes the location, label shows number of sections offered at location

You can filter by

- Campus Schedule Type
- Semester
- Subject
- Course ID

Fill Rates Median by Course ID (Accounting)

Chart shows median fill rates by course ID



# Student Success by Gender

Program Review required data section 5.2 Success Analysis

**Tab shows success rate by gender (triangle represents within discipline, grey bar within a specified comparison group. Disproportionate impact (at a defined threshold) of comparison group is noted in triangle color. Only shows student groups greater than selected value**

You can filter the data by

- Gender
- Semester
- Subject Area
- Course ID

You can amend by parameters

**Comparison Group:** This is the comparison group that will be used to determine disproportionate impact (as represented on the grey bar). You can pick

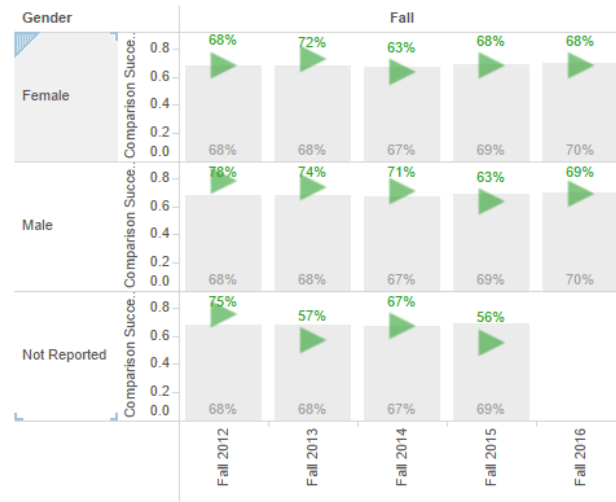
- **Entire School:** All students at SCC
- **Entire Discipline:** All students within the discipline
- **Entire Dimension:** All students in that gender group

**Only show groups over:** Will only display data if the size of the student group is over this parameter – use this to filter out small groups of students

**Disp Impact Threshold:** Can set the threshold for a disproportionate impact – this is usually set to 80% meaning the proportion of the Subject Area student group should be within 80% of the proportion of the institution group.

Success by Gender (Accounting)

Chart shows success rate by gender (triangle represents within discipline, grey bar within Entire School). Only shows student groups greater than 6 students



# Student Success by Age Group

Program Review required data section 5.2 Success Analysis

**Tab shows success rate by age group (triangle represents within discipline, grey bar within a specified comparison group. Disproportionate impact (at a defined threshold) of comparison group is noted in triangle color.**

**Only shows student groups greater than selected value**

You can filter the data by

- Age Group
- Semester
- Subject Area
- Course ID

You can amend by parameters

**Comparison Group:** This is the comparison group that will be used to determine disproportionate impact (as represented on the grey bar). You can pick

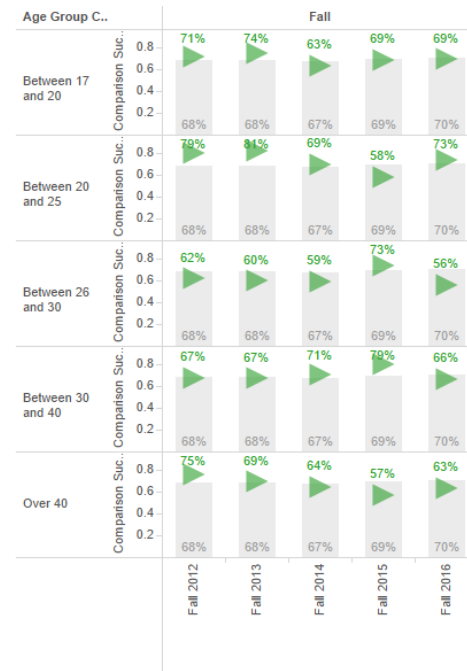
- **Entire School:** All students at SCC
- **Entire Discipline:** All students within the discipline
- **Entire Dimension:** All students in that age group

**Only show groups over:** Will only display data if the size of the student group is over this parameter – use this to filter out small groups of students

**Disp Impact Threshold:** Can set the threshold for a disproportionate impact – this is usually set to 80% meaning the proportion of the Subject Area student group should be within 80% of the proportion of the institution group.

Success by Age Group (Accounting)

Chart shows success rate by gender (triangle represents within discipline, grey bar within Entire School). Only shows student groups greater than 15 students



# Student Success by Ethnicity

Program Review required data section 5.2 Success Analysis

**Tab shows success rate by ethnicity (triangle represents within discipline, grey bar within a specified comparison group. Disproportionate impact (at a defined threshold) of comparison group is noted in triangle color. Only shows student groups greater than selected value**

You can filter the data by

- Ethnicity
- Semester
- Subject Area
- Course ID

You can amend by parameters

**Comparison Group:** This is the comparison group that will be used to determine disproportionate impact (as represented on the grey bar). You can pick

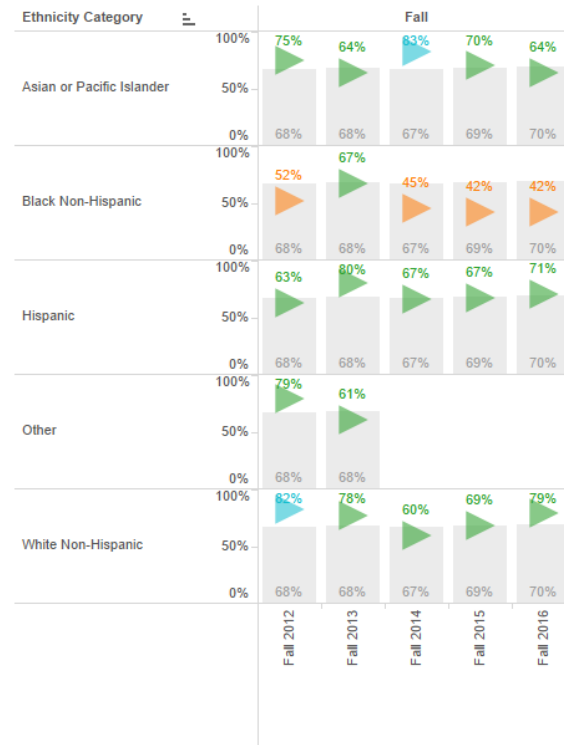
- **Entire School:** All students at SCC
- **Entire Discipline:** All students within the discipline
- **Entire Dimension:** All students in that ethnicity group

**Only show groups over:** Will only display data if the size of the student group is over this parameter – use this to filter out small groups of students

**Disp Impact Threshold:** Can set the threshold for a disproportionate impact – this is usually set to 80% meaning the proportion of the Subject Area student group should be within 80% of the proportion of the institution group.

Success by Ethnicity (Accounting)

Chart shows success rate by ethnicity (triangle represents within discipline, grey bar within Entire School). Only shows student groups greater than 15 students





## Student Success by Modality

Program Review required data section 5.2 Success Analysis

**Tab shows success rate by modality (triangle represents within discipline, grey bar within a specified comparison group. Disproportionate impact (at a defined threshold) of comparison group is noted in triangle color.**

**Only shows student groups greater than selected value**

You can filter the data by

- Modality
- Semester
- Subject Area
- Course ID

You can amend by parameters

**Comparison Group:** This is the comparison group that will be used to determine disproportionate impact (as represented on the grey bar). You can pick

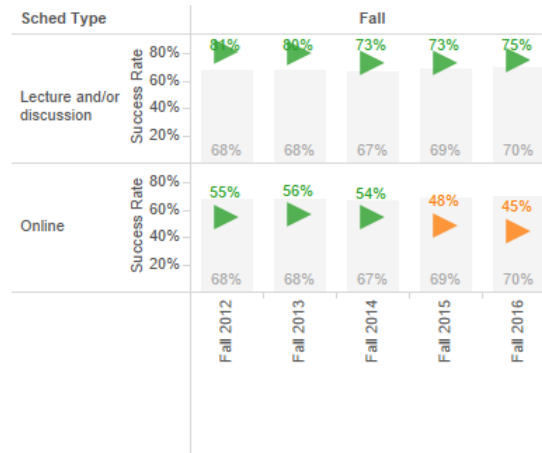
- **Entire School:** All students at SCC
- **Entire Discipline:** All students within the discipline
- **Entire Dimension:** All students in that modality group

**Only show groups over:** Will only display data if the size of the student group is over this parameter – use this to filter out small groups of students

**Disp Impact Threshold:** Can set the threshold for a disproportionate impact – this is usually set to 80% meaning the proportion of the Subject Area student group should be within 80% of the proportion of the institution group.

### Success by Modality (Accounting)

Chart shows success rate by course modality (triangle represents within discipline, grey bar



# Student Success by CRN

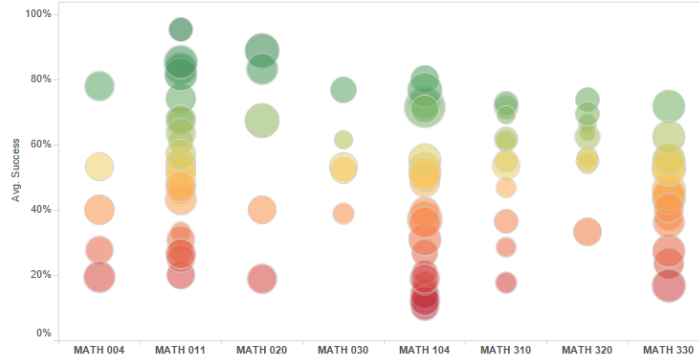
Program Review required data section 5.2 Success Analysis

Tab shows success rate by section (only courses with more than 5 sections offered in a particular semester displayed). Each circle represents a particular CRN. You can filter the data by

- Semester
- Term
- Subject Area

Success by CRN Mathematics

Chart shows success rate by course section number for courses with more than 5 offerings in the Fall 2015



# Course Success Rates

Program Review required data section 5.3 Cross Discipline Analysis

Tab shows success rate and enrollments by course ID within the selected subject area(s).

You can filter the data by

- Semester
- Subject Area
- Course ID

Course Success Rates (Accounting)

Chart shows success rate by course ID in Fall semester.

Course ID	Fall 2012		Fall 2013		Fall 2014		Fall 2015		Fall 2016	
	Enrollments	Success Rate	Enrollments	Success Rate	Enrollments	Success Rate	Enrollments	Success Rate	Enrollments	Success Rate
ACCT 001	196	61%	185	64%	237	57%	199	52%	151	57%
ACCT 002	116	84%	83	82%	79	73%	98	77%	76	83%
ACCT 050	30	87%	28	89%	27	81%	22	73%	26	77%
ACCT 177			29	76%	25	80%				
ACCT 183	47	83%	29	79%	40	83%	23	87%	27	70%
Grand Total	389	72%	354	73%	408	66%	342	63%	280	67%

You can amend by parameters

**Only show groups over:** Will only display data if the size of the student group is over this parameter – use this to filter out small groups of students

## Number of Degrees

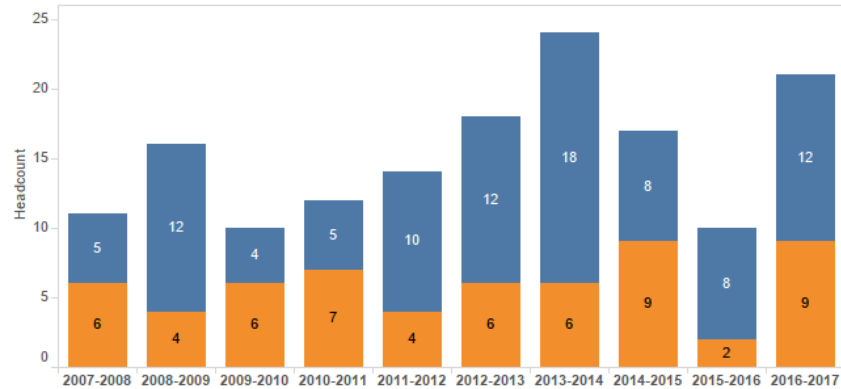
Program Review required data section 5.4 Degrees/Certificates Awarded

**Tab shows success rate by section (only courses with more than 5 sections offered in a particular semester displayed). Each circle represents a particular CRN**

You can filter the data by

- Graduating Major
- Degree

Number of Degrees (Accounting - Associate in Science & Certificate of Achievement)



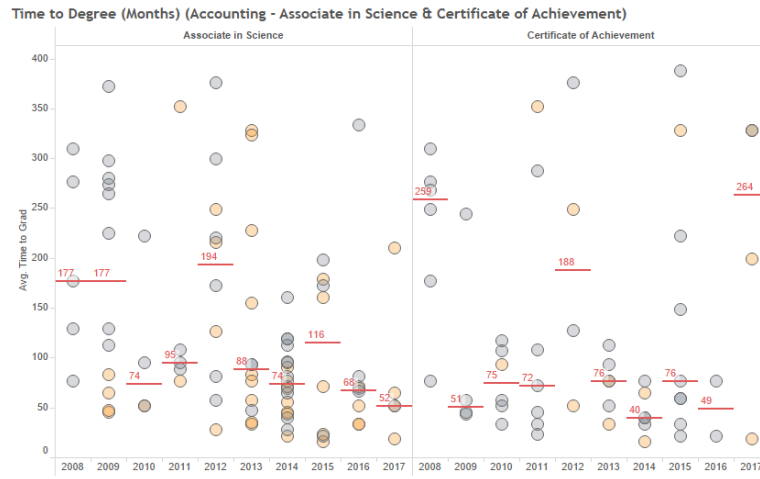
## Time to Degree

Program Review supplemental data section 5.4 Degrees/Certificates Awarded

Tab shows time to degree in months from first entry at SCC to graduation. Each circle represents one graduate, the color of the circle indicates whether the student entered SCC with transfer work. Median for the group in red.

You can filter the data by

- Graduating Major
- Degree



## Awards per Student

Program Review supplemental data section 5.4 Degrees/Certificates Awarded

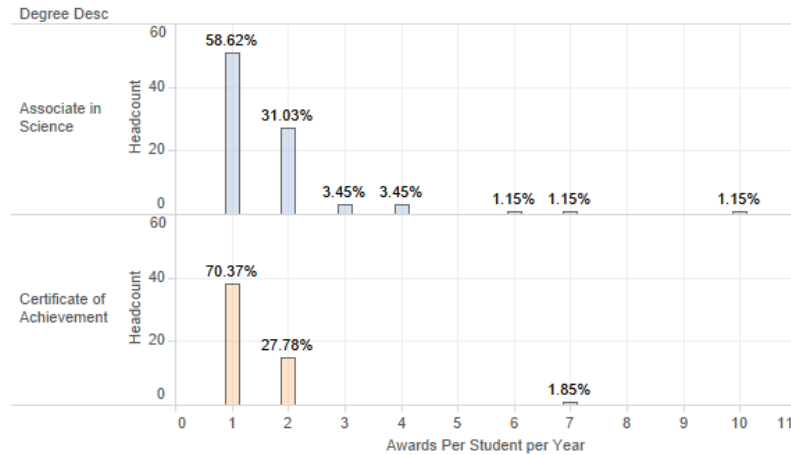
Tab shows number of awards gained by students graduating in selected major for selected academic years.

You can filter the data by

- Academic Year
- Graduating Major

### Awards per Student (Accounting)

Shows number of students by number of awards received by students graduating in Accounting



# Transfer Ready

Program Review required data section 5.5 Transfer Ready

Tab shows headcount and percent of students that are deemed 'transfer ready' within subject area.

Transfer ready is defined as 60 units, GPA over 2.0 and passed a credit math and a credit English course.

You can filter the data by

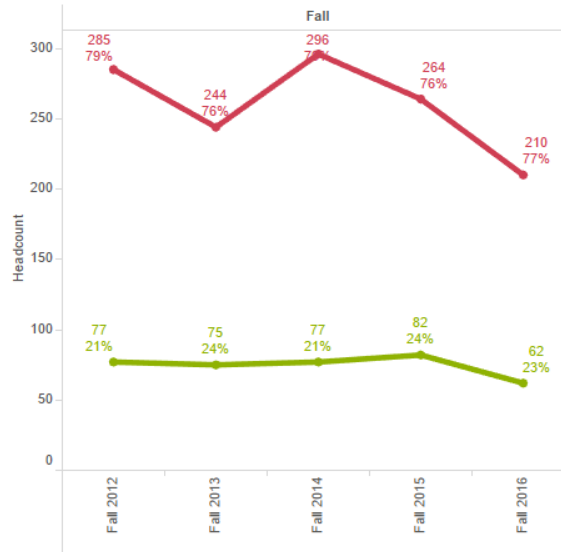
- Semester
- Subject Area
- Course ID

You can amend by parameters

**Only show groups over:** Will only display data if the size of the student group is over this parameter – use this to filter out small groups of students

## Transfer Ready (Accounting)

Chart shows number and percent of students taking Accounting Courses (All)  
Only shows student groups over 20



# FTEF

## Program Review required data section 6.1 Human Resources

This tab shows FTEF by contract type within subject areas

You can filter by

- Semester
- Subject
- Course ID

### FTEF (Accounting)

Chart shows total FTEF by contract type

