

# **SOLANO COMMUNITY COLLEGE**

## **AERONAUTICS NUT TREE FACILITY** **IMPROVEMENTS PROJECT**

### **MANDATORY PRE-BID CONFERENCE**

**THURSDAY, MARCH 10<sup>th</sup>, 2022**

**FORMAL BID**

**Note:**

**The information discussed during the Pre-Bid Conference is intended to provide a high-level overview of the project requirements contained in the Bid Documents, and offer potential bidders an opportunity to review and familiarize themselves with the project site conditions. Submission of a Bid signifies Bidder's careful examination of the Bid Documents (including any addenda) as well as accounting for the existing site conditions (based on their observations made from visiting the site and historical reference documents).**

**Oral statements shall not be relied upon and will not be binding or legally effective. All questions must be submitted in writing and will be answered via addenda and posted on the District's website.**

# PRE-SUBMITTAL CONFERENCE SIGN-IN

## ROLL CALL FOR MANDATORY PRE-SUBMITTAL CONFERENCE

**\*Send email to [Noe.Ramos@solano.edu](mailto:Noe.Ramos@solano.edu) with confirmation of attendance. Include contact person and company information.**

**\*Pre-Submittal Conference Sign-In Sheet will be posted on the District's Website**

# BIDDING SCHEDULE

## BID PHASE SCHEDULE:

- **Mandatory Pre-Bid Conference: Thursday, March 10<sup>th</sup>, 2022 at 11:00 am (*today*).**
- **Last day to submit questions: by Thursday, March 17<sup>th</sup>, 2022, 2:00 pm**
- **Last Addendum will be issued: by Thursday, March 24<sup>th</sup>, 2022, 2:00 pm**
  - Addendum 001 issued on March 7<sup>th</sup>, 2022
- **BIDS DUE: by Thursday, March 31<sup>st</sup>, 2022, 2:00 pm**
  - See Notice to Bidders 00 11 16 for submittal details.
  - Bid Opening will be live streamed over the internet on the District's Website. An in-person opening will not be held. <http://welcome.solano.edu/liveevents/>
- **Post Bid Interview: Friday, April 1<sup>st</sup>, 2022, *time to-be-determined*.**
- **Solano Community College Board Approval: Wednesday, April 20<sup>th</sup>, 2022**

## CONSTRUCTION PHASE SCHEDULE:

- **May 30<sup>th</sup>, 2022 – July 29<sup>th</sup>, 2022**

# BIDDING OVERVIEW

## BID SUBMITTAL DETAILS:

- **Formal Bids will be received until 2:00 pm, Thursday March 31<sup>st</sup>, 2022 by either Hand-Delivery or U.S. Mail to Solano Community College, 4000 Suisun Valley Road, Fairfield California 94534, Building 1102 (Kitchell Bond Office).**
- **Bid Package must include the following:**
  - Bid Form and Proposal, Specification Section 00 41 13
  - Bid Bond, Specification Section 00 43 13
  - Designated Subcontractor List, Specification Section 00 43 36
  - Site Visit Certification, Specification Section 00 45 01
  - Non-Collusion Declaration, Specification Section 00 45 19
- **An Independent In-Person Site Visit is required in addition to this Virtual Pre-Submittal Conference. Site Visit can be completed at any time during the bidding phase, scheduling not required.**
  - ***OPTIONAL: On Tuesday, March 15<sup>th</sup>, 2022, at 10am, Noe Ramos will be onsite to meet with potential bidders. No appointment needed, just show up.***
- **All Project Bid Documents can be viewed or downloaded on Solano Community College's website at: <http://www.solano.edu/measureq/vendor.php>**
- **This is a Formal Bid, with no Contractor Prequalification.**
- **This project is not subject to a Project Labor Agreement (PLA).**
- **This is not a Division of the State Architect (DSA) Project. Contractor is required to pull a permit from the Solano County Building Department.**
- **Required Contractor's License: A (General Engineering) or B (General Contractor)**
- **Apparent Low Bidder will be determined by Base Bid Amount.**
- **Bid Form includes a 5% Owner's Allowance.**
- **Construction Estimate: \$450,000**

# PROJECT TEAM

## OWNER:

### **Solano Community College District**

- Lucky Lofton, Executive Bond and Facilities Manager
- Jason Yi, District Project Manager
- Laura Scott, Purchasing

## PROGRAM MANAGER/ CONSTRUCTION MANAGER:

### **Kitchell CEM**

- Noe Ramos, Project Manager

## DESIGN TEAM:

### **CSW / ST2**

- Kirk Bovitz, PE

## GEOTECHNICAL INSPECTIONS:

### ***A3GEO, INC.***

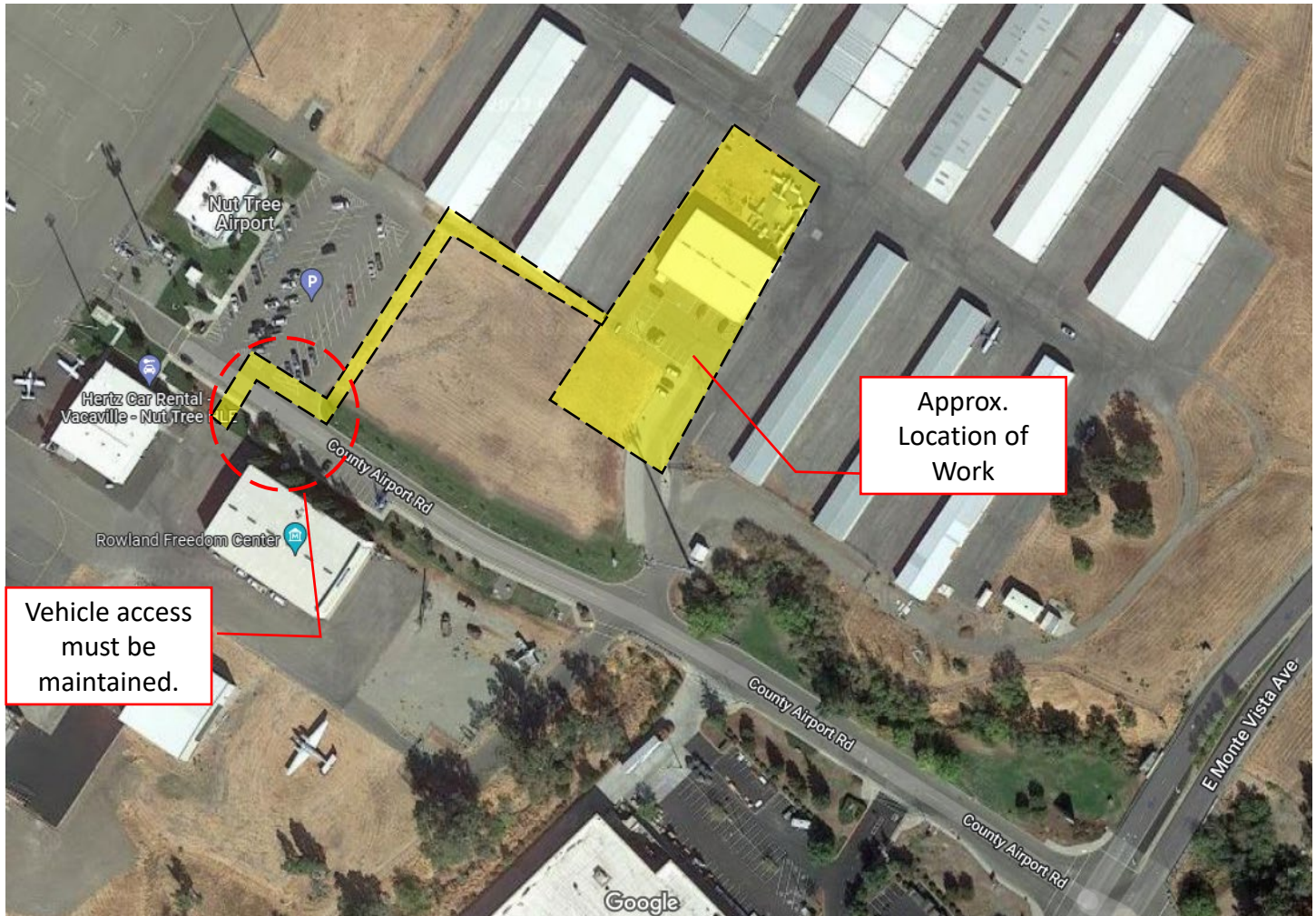
## GENERAL INSPECTIONS:

### ***Solano County Building Department***

# PROJECT OVERVIEW

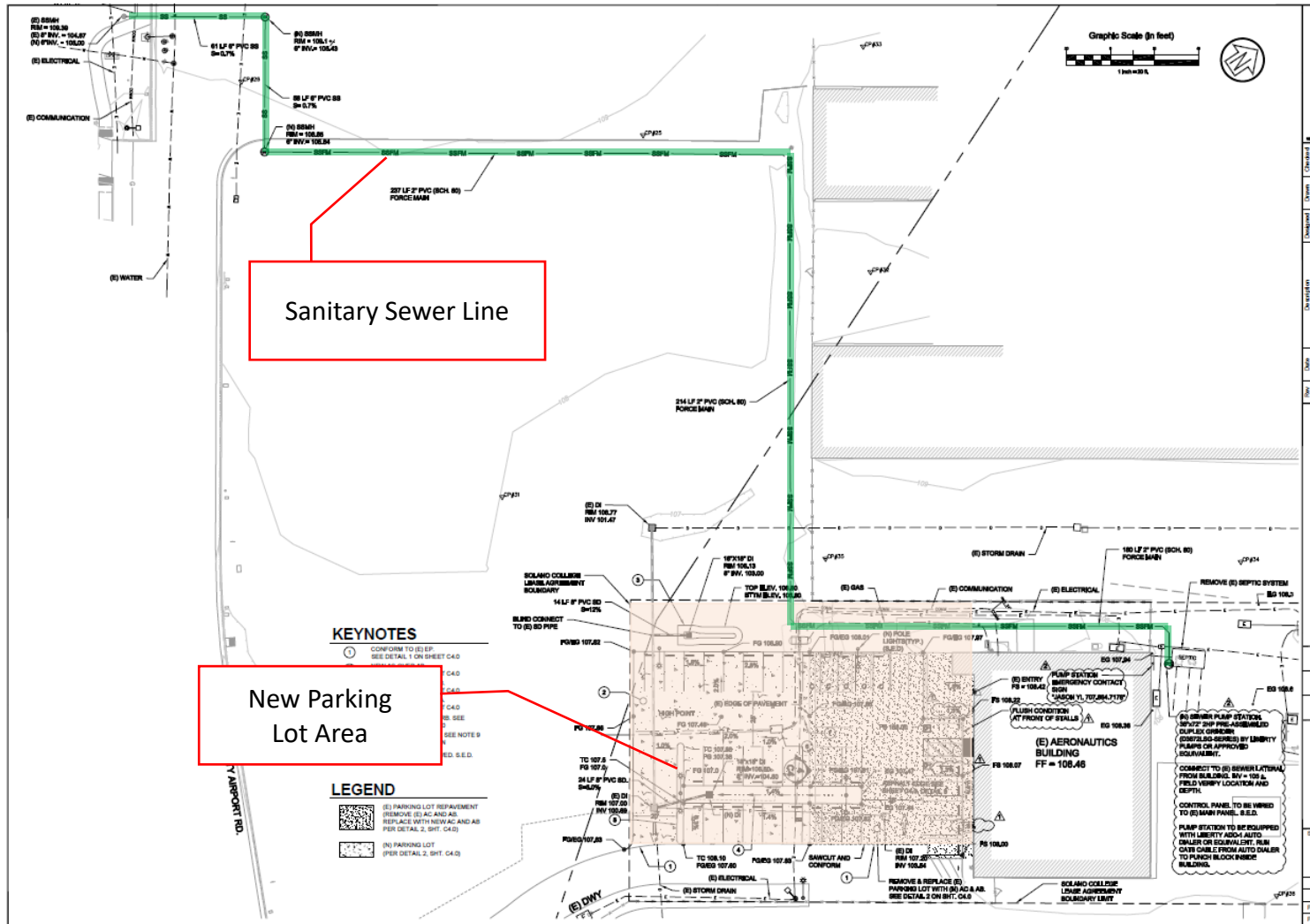
## SITE MAP:

### NUT TREE AIRPORT





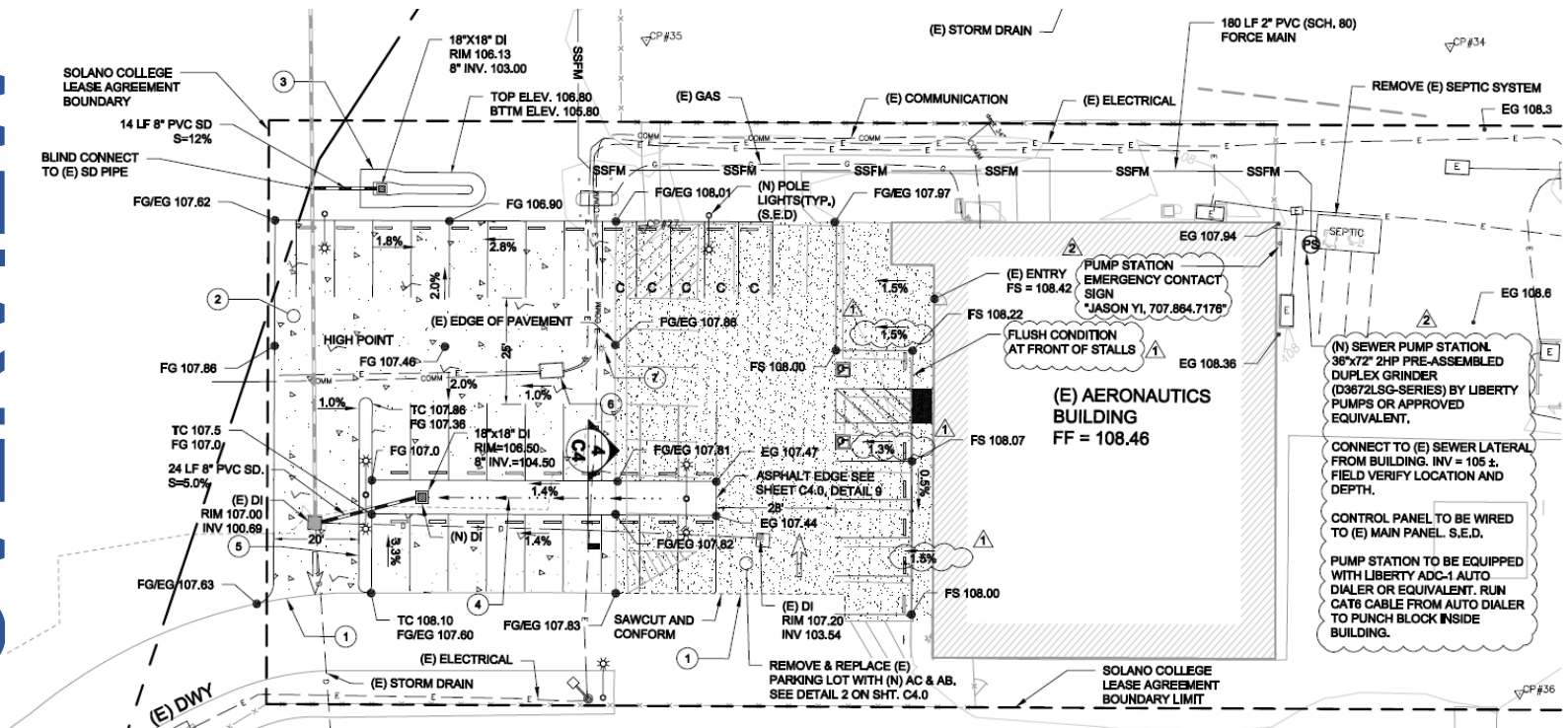
## SITE PLAN – Highlights (Sheet C2.0):



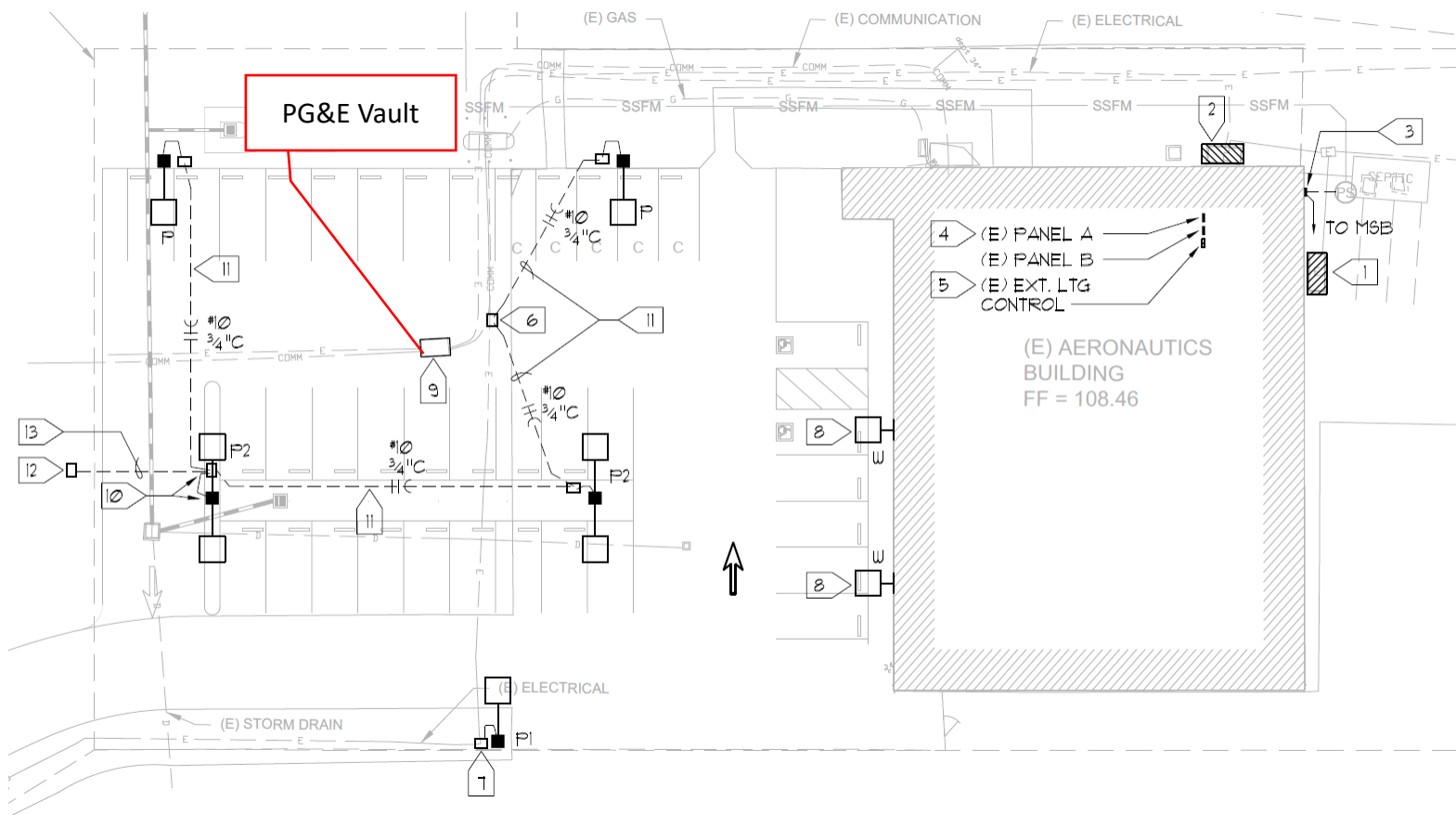
# PROJECT OVERVIEW



# OVERVIEW



## Lighting – Highlights (Sheet E2.0):



# PROJECT OVERVIEW



Existing Parking Lot



# PROJECT PHOTOS VIRTUAL JOBWALK



Existing Parking Lot





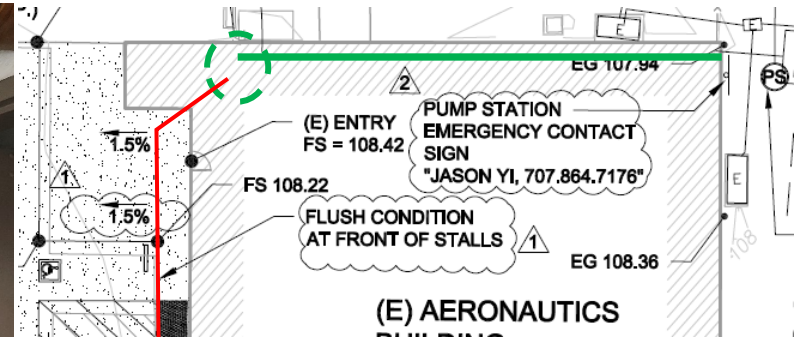
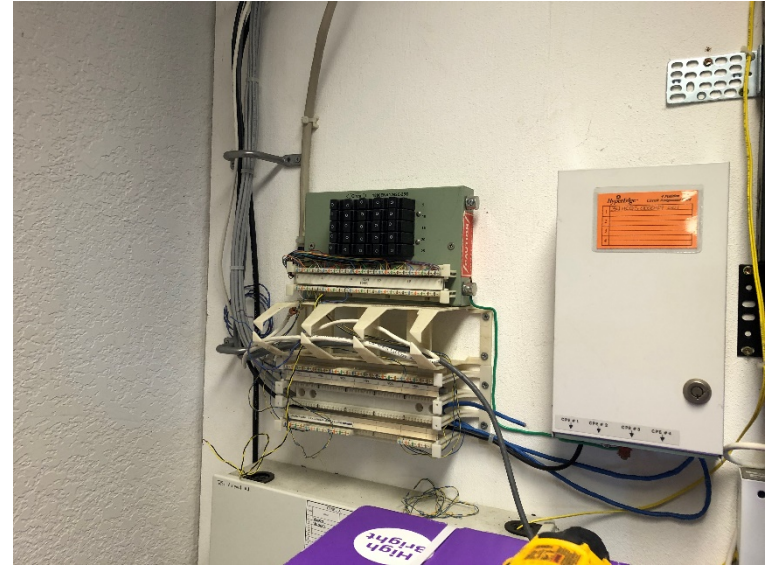
Existing Parking Lot



# PROJECT PHOTOS VIRTUAL JOBWALK



Existing Septic Tank Location



Approx. location of  
CAT6 cable run.

Existing Phone Line (CAT6) Connection Location





Sewer Connection Location





Existing Road – MAINTAIN ACCESS

# PROJECT PHOTOS VIRTUAL JOBWALK



## ADDITIONAL SITE PHOTOS AVAILABLE FOR REFERENCE

\* Additional photos can be downloaded from the following link:

<https://app.box.com/s/vjl8l7ivge305uh8y6p075z78avxxnwp>

Photos Download Link

# QUESTIONS

## QUESTIONS?

- *All Bid Phase questions should be emailed to [Noe.Ramos@solano.edu](mailto:Noe.Ramos@solano.edu)*
- Potential Bidders should check the District website for Addenda:  
<http://www.solano.edu/measureq/vendor.php>

## THANK YOU