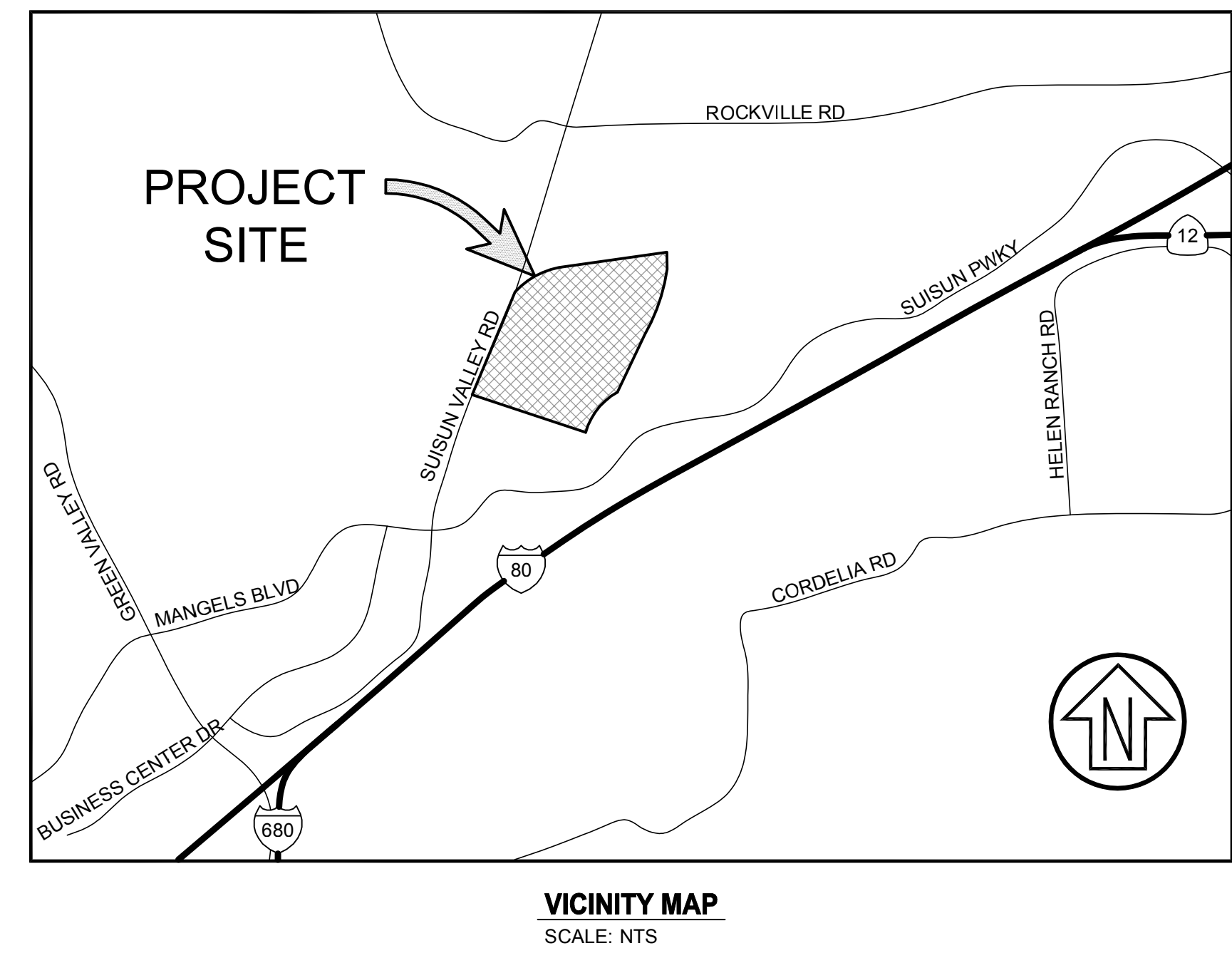


# CONSTRUCTION DOCUMENTS FOR PARKING LOT ISLAND IMPROVEMENTS SCCD FAIRFIELD CAMPUS

**CSW | ST 2**  
**CSW/Stuber-Stroeh  
Engineering Group, Inc.**  
 45 Leverone Court tel: 415.883.9850  
 Novato, CA 94949 fax: 415.883.9836  
 Civil & Structural Engineers  
 Surveying & Mapping  
 Environmental Planning  
 Land Planning  
 Construction Management  
 http://www.cswst2.com © 2017



| Rev | Date | Description | Designed | Drawn | Checked |
|-----|------|-------------|----------|-------|---------|
|     |      |             |          |       |         |

## LEGEND

| EXISTING |                              | PROPOSED |
|----------|------------------------------|----------|
|          | BOLLARD                      | N/A      |
|          | SIGN                         | N/A      |
|          | LIGHT - POST MOUNTED         | N/A      |
|          | POWER POLE (WITH GUY)        | N/A      |
|          | SANITARY SEWER - CLEANOUT    | N/A      |
|          | STORM DRAINAGE - AREA DRAIN  | N/A      |
|          | STORM DRAINAGE - CLEANOUT    | N/A      |
|          | STORM DRAINAGE - CATCH BASIN | N/A      |
|          | STORM DRAINAGE - CURB INLET  | N/A      |
|          | STORM DRAINAGE - DROP INLET  | N/A      |
|          | TRAFFIC LIGHT                | N/A      |
|          | FOUND / SET - CONTROL POINT  | N/A      |
|          | CONTOUR - MAJOR              |          |
|          | CONTOUR - MINOR              |          |
|          | CURB, GUTTER AND SIDEWALK    |          |
|          | FENCE                        |          |
|          | FLOWLINE / SWALE             |          |
|          | RIGHT OF WAY                 |          |
|          | RETAINING WALL               |          |
|          | SANITARY SEWER               |          |
|          | STORM DRAIN                  |          |
|          | TREE DRIPLINE                | N/A      |

## GENERAL NOTES

- WORK SHOWN HEREON SHALL BE DONE IN ACCORDANCE WITH THE EDITION, SOLANO COMMUNITY COLLEGE STANDARD PLANS AND DETAILS, THE STANDARD SPECIFICATIONS FOR THE STATE OF CALIFORNIA DEPARTMENT OF TRANSPORTATION, LATEST EDITION AND THE APPLICABLE UTILITY AGENCY STANDARD PLANS AND SPECIFICATIONS, LATEST EDITION.
- THE CONTRACTOR SHALL ASSUME SOLE AND COMPLETE RESPONSIBILITY FOR THE JOB SITE CONDITIONS, INCLUDING SAFETY OF ALL PERSONS AND PROPERTY, DURING THE COURSE OF CONSTRUCTION OF THIS PROJECT. THIS REQUIREMENT SHALL APPLY CONTINUOUSLY, AND SHALL NOT BE LIMITED TO NORMAL WORKING HOURS. THE CONTRACTOR FURTHER AGREES TO HOLD DESIGN PROFESSIONAL HARMLESS FROM ANY AND ALL LIABILITY, REAL OR ALLEGED, IN CONNECTION WITH THE PERFORMANCE OF WORK ON THIS PROJECT, EXCEPTING LIABILITY ARISING FROM THE SOLE NEGLIGENCE OF THE DESIGN PROFESSIONAL.
- CONTRACTOR SHALL HOLD HARMLESS SOLANO COMMUNITY COLLEGE AND ITS AUTHORIZED REPRESENTATIVES FROM ALL LIABILITIES AND DAMAGES RESULTING FROM HIS CONSTRUCTION OPERATIONS.
- PRIOR TO COMMENCING CONSTRUCTION OPERATIONS, THE CONTRACTOR SHALL VERIFY ALL INTERFACES BETWEEN EXISTING CONDITIONS AND NEW CONSTRUCTION FOR GRADING, DRAINAGE, UNDERGROUND, AND OVERHEAD FACILITIES, INCLUDING LOCATION AND ELEVATION OF EXISTING UNDERGROUND OR AT GRADE FACILITIES AT CROSSINGS WITH PROPOSED UNDERGROUND FACILITIES. IF CONDITIONS DIFFER FROM THOSE SHOWN ON THE PLANS, THE CONTRACTOR SHALL NOTIFY THE ENGINEER AND SHALL NOT BEGIN CONSTRUCTION OPERATIONS UNTIL THE CHANGED CONDITIONS HAVE BEEN EVALUATED.
- THE CONTRACTOR SHALL BE RESPONSIBLE FOR THE REVIEW AND COORDINATION OF ALL CONTRACT DOCUMENTS PRIOR TO THE START OF CONSTRUCTION. ANY DISCREPANCIES THAT OCCUR SHALL BE BROUGHT TO THE ATTENTION OF THE ENGINEER PRIOR TO THE START OF CONSTRUCTION SO THAT A CLARIFICATION CAN BE ISSUED. ANY WORK PERFORMED IN CONFLICT WITH THE CONTRACT DOCUMENTS SHALL BE CORRECTED BY THE CONTRACTOR AT THEIR OWN EXPENSE.
- THE ENGINEER PREPARING THESE PLANS WILL NOT BE RESPONSIBLE FOR, OR LIABLE FOR, UNAUTHORIZED CHANGES TO OR USES OF THESE PLANS. ALL CHANGES TO THE PLANS MUST BE IN WRITING AND MUST BE APPROVED BY THE ENGINEER.
- NOTES AND DETAILS ON DRAWINGS SHALL TAKE PRECEDENCE OVER GENERAL NOTES AND TYPICAL DETAILS. WHERE NO DETAILS ARE GIVEN, CONSTRUCTION SHALL BE AS SHOWN FOR SIMILAR WORK.
- WATER SHALL BE USED TO CONTROL DUST DURING CONSTRUCTION OPERATIONS.
- OUTDOOR NOISE-GENERATING CONSTRUCTION ACTIVITIES (INCLUDING BUT NOT LIMITED TO RAPID IMPACT COMPACTION (RIC) GRADING, TRENCHING, CONCRETE PLACEMENT, SAWING AND HAMMERING) SHALL BE LIMITED TO THE HOURS BETWEEN 8 AM. AND 5 PM, MONDAY THROUGH FRIDAY. FOR QUESTIONS REGARDING CONSTRUCTION HOURS AND/OR RELATED NOISE, PLEASE CONTACT THE ENGINEER.
- IF, AT ANY TIME DURING GRADING OPERATIONS, ANY UNFAVORABLE GEOLOGICAL CONDITIONS ARE ENCOUNTERED, GRADING IN THAT AREA WILL STOP UNTIL APPROVED CORRECTIVE MEASURES ARE OBTAINED.
- ALL STREETS SHALL BE SWEEPED AND KEPT CLEAN AT THE END OF EACH DAY AND SHALL COMPLY WITH ALL APPLICABLE MCSTOPPP, NPDES REQUIREMENTS FOR THE DURATION OF THE PROJECT WORK.
- THE CONTRACTOR SHALL CONTACT UNDERGROUND SERVICE ALERT (811) A MINIMUM OF 48 HOURS PRIOR TO EXCAVATION.
- UTILITIES AS SHOWN CONFORM TO AVAILABLE RECORD DATA. THE EXISTENCE, LOCATION AND CHARACTERISTICS OF UNDERGROUND UTILITY INFORMATION SHOWN ON THESE PLANS HAVE BEEN OBTAINED FROM A REVIEW OF AVAILABLE RECORD DATA. NO REPRESENTATION IS MADE AS TO THE ACCURACY OR COMPLETENESS OF SAID UTILITY INFORMATION. IT IS THE CONTRACTOR'S RESPONSIBILITY TO VERIFY LOCATION AND DEPTHS BY POT-HOLING OF ALL UTILITIES WITH APPROPRIATE AGENCIES, AND TO TAKE PRECAUTIONARY MEASURES TO PROTECT THE UTILITY LINES SHOWN AND ANY OTHER LINES NOT OF RECORD OR NOT SHOWN ON THESE PLANS. ANY CONFLICTS SHALL BE REPORTED IMMEDIATELY TO THE ENGINEER.
- CONTRACTOR SHALL PROVIDE ALL MATERIAL, LABOR, EQUIPMENT, FOR INSTALLATION, IMPLEMENTATION, AND MAINTENANCE OF ALL SURFACE WATER POLLUTION PREVENTION MEASURES THROUGHOUT THE FULL EXTENT OF THE PROJECT.
- THIS SURVEY DOES NOT REFLECT A FINAL BOUNDARY DETERMINATION. THE BOUNDARY SHOWN HEREON IS DEPICTED FOR GRAPHICAL PURPOSES ONLY.
- DISTANCES SHOWN ARE IN FEET AND DECIMALS THEREOF.
- HORIZONTAL AND VERTICAL DATUM IS BASED ON LOCALIZATION OF AERIAL SURVEY CONTROL PROVIDED BY SOLANO COLLEGE.

## SHEET INDEX

|      |   |
|------|---|
| C1.0 | COVER SHEET   |
| C1.1 | OVERALL SITE PLAN/ KEY MAP  |
| C2.0 | DEMOLITION PLAN (NORTH LOT ISLAND A & ISLAND B)                   |
| C2.1 | DEMOLITION PLAN (SOUTH LOT ISLAND C AND ISLAND D)                 |
| C2.2 | DEMOLITION PLAN CONT'D (SOUTH LOT ISLAND C AND ISLAND D)          |
| C3.0 | GRADING PLAN (NORTH LOT ISLAND A AND ISLAND B)                    |
| C3.1 | GRADING PLAN (SOUTH LOT ISLAND C AND ISLAND D)                    |
| C3.2 | GRADING PLAN CONT'D (SOUTH LOT ISLAND C AND ISLAND D)             |
| C4.0 | DETAILS   |
| L1.0 | IRRIGATION PLAN (NORTH LOT ISLAND A AND ISLAND B) - ADD ALTERNATE |
| L1.1 | IRRIGATION PLAN (SOUTH LOT ISLAND C AND ISLAND D) - ADD ALTERNATE |
| L2.0 | LANDSCAPE PLAN (NORTH LOT ISLAND A AND ISLAND B)                  |
| L2.1 | LANDSCAPE PLAN (SOUTH LOT ISLAND C AND ISLAND D)                  |

## ABBREVIATIONS

|     |                           |       |                           |     |                |        |                          |
|-----|---------------------------|-------|---------------------------|-----|----------------|--------|--------------------------|
| AB  | AGGREGATE BASE            | C&G   | CURB AND GUTTER           | FG  | FINISH GRADE   | O.C.   | ON CENTER                |
| AC  | ASPHALT CONCRETE          | CG&SW | CURB, GUTTER AND SIDEWALK | FL  | FLOWLINE       | P.C.C. | PORTLAND CEMENT CONCRETE |
| ACR | ACCESS COMPLIANT RAMP     | DL    | DAYLIGHT                  | FS  | FINISH SURFACE | PRO    | PROPOSED                 |
| BSW | BACK OF SIDEWALK          | EG    | EXISTING GRADE            | GB  | GRADE BREAK    | SF     | SQUARE FEET              |
| CJ  | CONTROL JOINT             | EL    | ELEVATION                 | HP  | HIGH POINT     | SW     | SIDEWALK                 |
| CL  | CENTERLINE / CONTROL LINE | EP    | EDGE OF PAVEMENT          | JP  | JOINT POLE     | TC     | TOP OF CURB              |
| CP  | CONTROL POINT             | EX    | EXISTING                  | LF  | LINEAR FEET    | TP     | TOP OF PAVEMENT          |
| CR  | CURB RETURN               | FC    | FACE OF CURB              | LP  | LOW POINT      | UNO    | UNLESS NOTED OTHERWISE   |
|     |                           |       |                           | NTS | NOT TO SCALE   |        |                          |

## BASIS OF TOPOGRAPHY

TOPOGRAPHY SHOWN WAS BASED ON AN AERIAL TOPOGRAPHIC SURVEY PERFORMED BY MOUNTAIN PACIFIC SURVEY'S DATED 2012, AND PROVIDED BY SOLANO COLLEGE.

## BENCHMARK

VERTICAL DATUM IS BASED ON LOCALIZATION OF AERIAL SURVEY CONTROL FROM MOUNTAIN PACIFIC SURVEYS DATED 2012, AND PROVIDED BY SOLANO COLLEGE

## BASIS OF BEARINGS

HORIZONTAL CONTROL IS BASED ON LOCALIZATION OF AERIAL SURVEY CONTROL FROM MOUNTAIN PACIFIC SURVEYS DATED 2012, AND PROVIDED BY SOLANO COLLEGE.

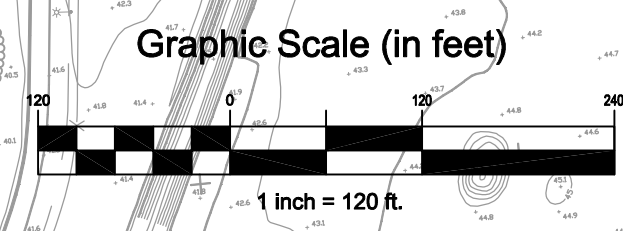
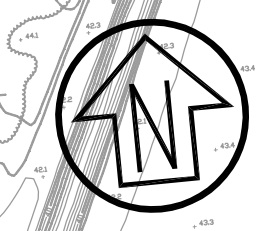
PARKING LOT ISLAND IMPROVEMENTS  
 COVER SHEET  
 SCCD FAIRFIELD CAMPUS

City Of  
**Fairfield**  
 County Of  
**Solano**  
 State Of  
**California**

Prepared Under the Direction of:

|                 |           |
|-----------------|-----------|
| Sheet           |           |
| <b>C1.0</b>     |           |
| Scale:          | N/A       |
| Date:           | 10/04/17  |
| Project Number: | 4.1164.11 |
| Plan File:      | D-XXXX-XX |

C:\CSW\_Cor\03\Temp\A4\Fairfield\_0444401\_16\_Cover\_Sheet.dwg 11/07/2017 - 05:14 PM gmm: 1:1602



**SEE SHEET  
C2.0 & C3.0**

**SEE SHEET  
C2.1 & C3.1**

**SEE SHEET  
C2.2 & C3.2**

| Rev | Date | Description | Designed | Drawn | Checked |
|-----|------|-------------|----------|-------|---------|
|     |      |             |          |       |         |
|     |      |             |          |       |         |
|     |      |             |          |       |         |
|     |      |             |          |       |         |
|     |      |             |          |       |         |

**PARKING LOT ISLAND IMPROVEMENTS  
OVERALL SITE PLAN / KEY MAP  
SCCD FAIRFIELD CAMPUS**

City Of  
Fairfield  
County Of  
Solano  
State Of  
California

Prepared Under the Direction of:

Sheet  
**C1.1**  
Scale: 1" = 120'  
Date: 10/04/17  
Project Number: 4.1164.11  
Plan File: D-XXXX-XX

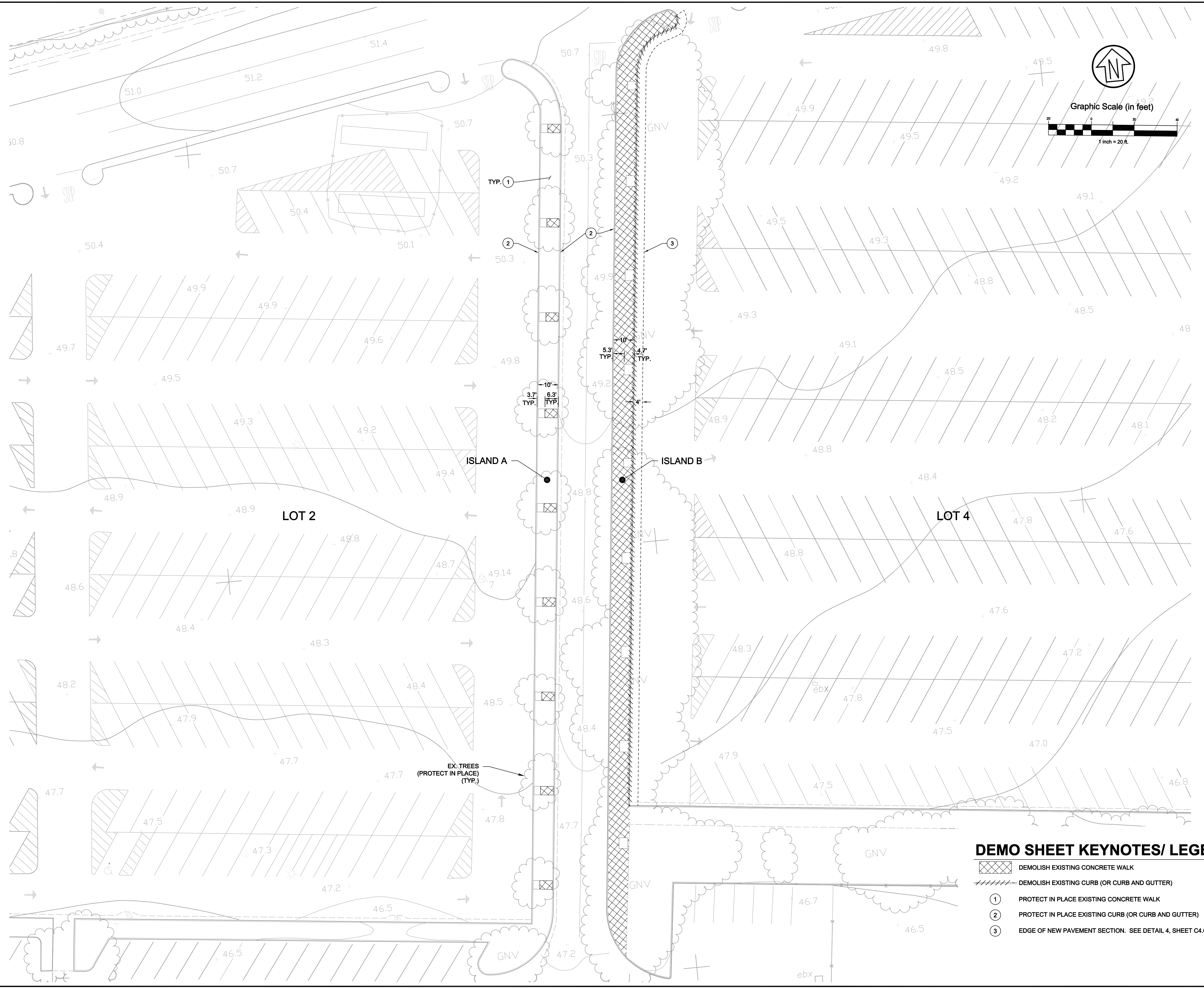
| Rev | Date | Description | Designed | Drawn | Checked |
|-----|------|-------------|----------|-------|---------|
|     |      |             |          |       |         |
|     |      |             |          |       |         |
|     |      |             |          |       |         |

**PARKING LOT ISLAND IMPROVEMENTS  
 DEMOLITION PLAN  
 (NORTH LOT ISLAND A AND ISLAND B)  
 SCCD FAIRFIELD CAMPUS**

City Of  
**Fairfield**  
 County Of  
**Solano**  
 State Of  
**California**

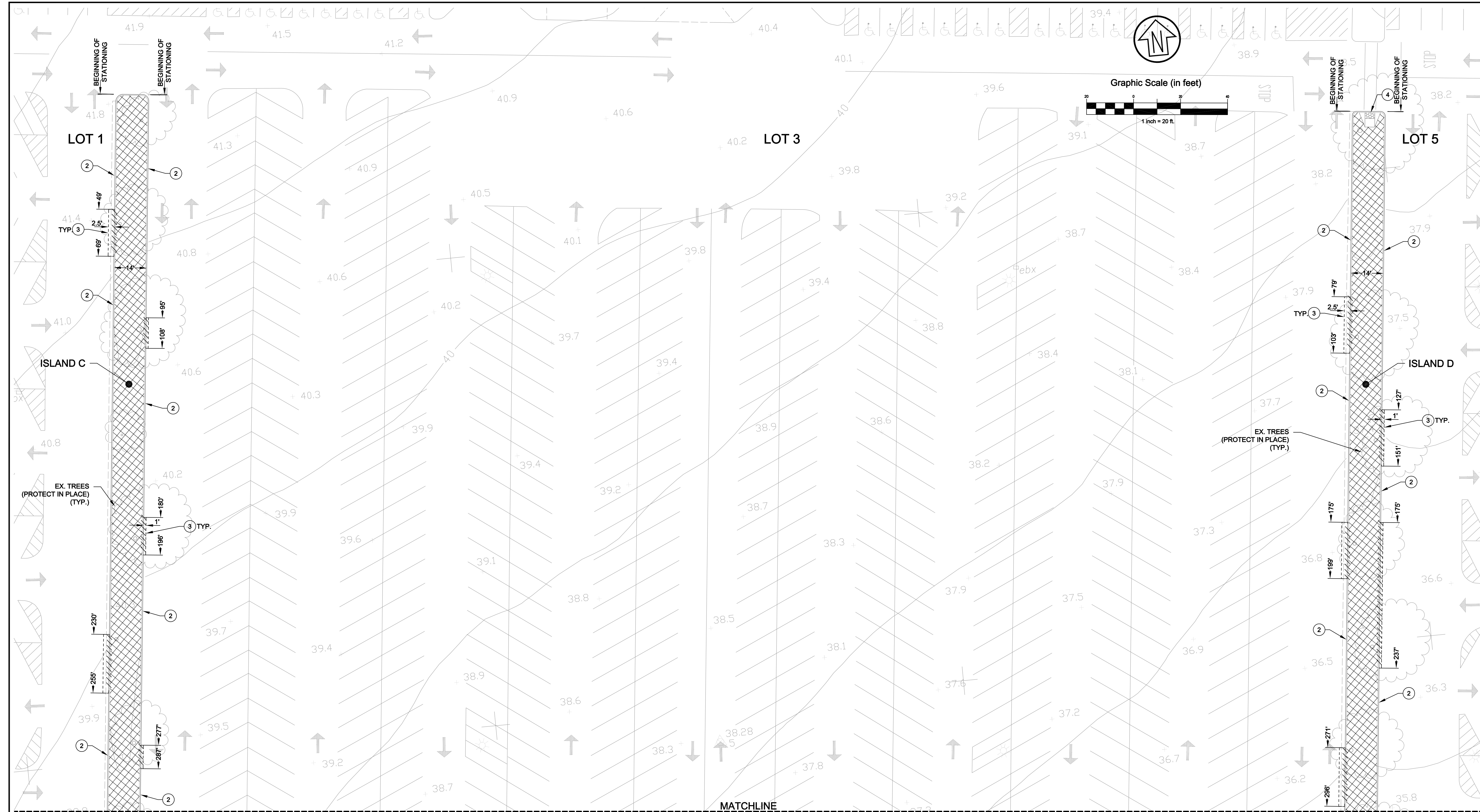
Prepared Under the Direction of:

|                 |             |
|-----------------|-------------|
| Sheet           | <b>C2.0</b> |
| Scale:          | 1" = 20'    |
| Date:           | 10/04/17    |
| Project Number: | 4.1164.11   |
| Plan File:      | D-XXXX-XX   |



**DEMO SHEET KEYNOTES/ LEGEND**

- DEMOLISH EXISTING CONCRETE WALK
- DEMOLISH EXISTING CURB (OR CURB AND GUTTER)
- ① PROTECT IN PLACE EXISTING CONCRETE WALK
- ② PROTECT IN PLACE EXISTING CURB (OR CURB AND GUTTER)
- ③ EDGE OF NEW PAVEMENT SECTION. SEE DETAIL 4, SHEET C4.0.



| Rev | Date | Description | Designed | Drawn | Checked |
|-----|------|-------------|----------|-------|---------|
|     |      |             |          |       |         |
|     |      |             |          |       |         |
|     |      |             |          |       |         |
|     |      |             |          |       |         |

**PARKING LOT ISLAND IMPROVEMENTS  
 DEMOLITION PLAN  
 (SOUTH LOT ISLAND C AND ISLAND D)  
 SCCD FAIRFIELD CAMPUS**

City Of  
Fairfield  
 County Of  
Solano  
 State Of  
California

Prepared Under the Direction of:  
 \_\_\_\_\_  
 \_\_\_\_\_

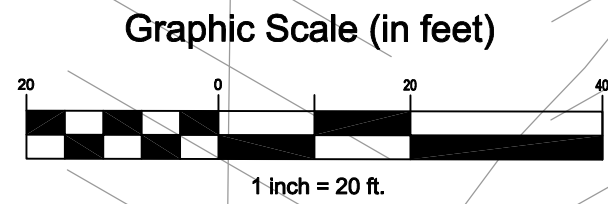
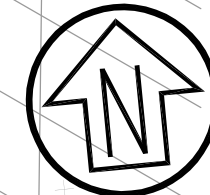
Sheet  
**C2.1**  
 Scale: 1" = 20'  
 Date: 10/04/17  
 Project Number: 4.1164.11  
 Plan File: D-XXXX-XX

**DEMO SHEET KEYNOTES/ LEGEND**

- DEMOLISH EXISTING CONCRETE WALK
- DEMOLISH EXISTING CURB (OR CURB AND GUTTER)
- ① (NOT USED)
- ② PROTECT IN PLACE EXISTING CURB (OR CURB AND GUTTER)
- ③ EDGE OF NEW PAVEMENT SECTION. SEE DETAIL 4, SHEET C4.0.
- ④ PROTECT IN PLACE EXISTING ADA RAMP.

P:\04411641\DWG\Sheet\_Drawing\C2.1\_Demolition Plan (South) (dwg) 11/22/2017 - 05:15 PM .gsm: 1:1

MATCHLINE  
SEE SHEET C2.1



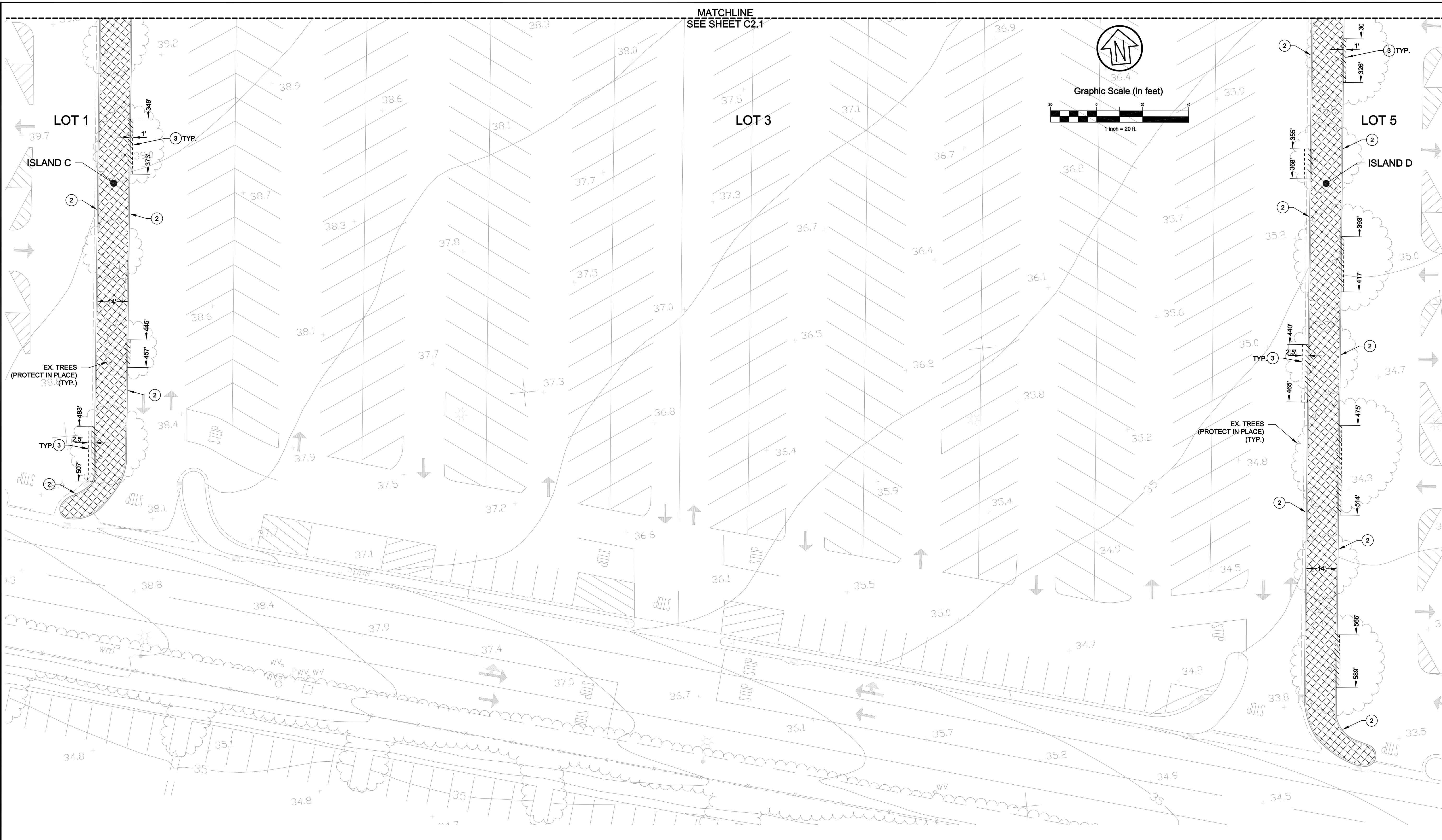
**CSW | ST2**

**CSW/Stuber-Stroeh**  
**Engineering Group, Inc.**

45 Leverone Court tel: 415.883.9850  
Novato, CA 94949 fax: 415.883.9856

Civil & Structural Engineers  
Surveying & Mapping  
Environmental Planning  
Land Planning  
Construction Management

<http://www.cswst2.com> © 2017



| Rev | Date | Description | Designed | Drawn | Checked |
|-----|------|-------------|----------|-------|---------|
|     |      |             |          |       |         |
|     |      |             |          |       |         |
|     |      |             |          |       |         |
|     |      |             |          |       |         |
|     |      |             |          |       |         |

**PARKING LOT ISLAND IMPROVEMENTS  
DEMOLITION PLAN CONT'D  
(SOUTH LOT ISLAND C AND ISLAND D)  
SCCD FAIRFIELD CAMPUS**

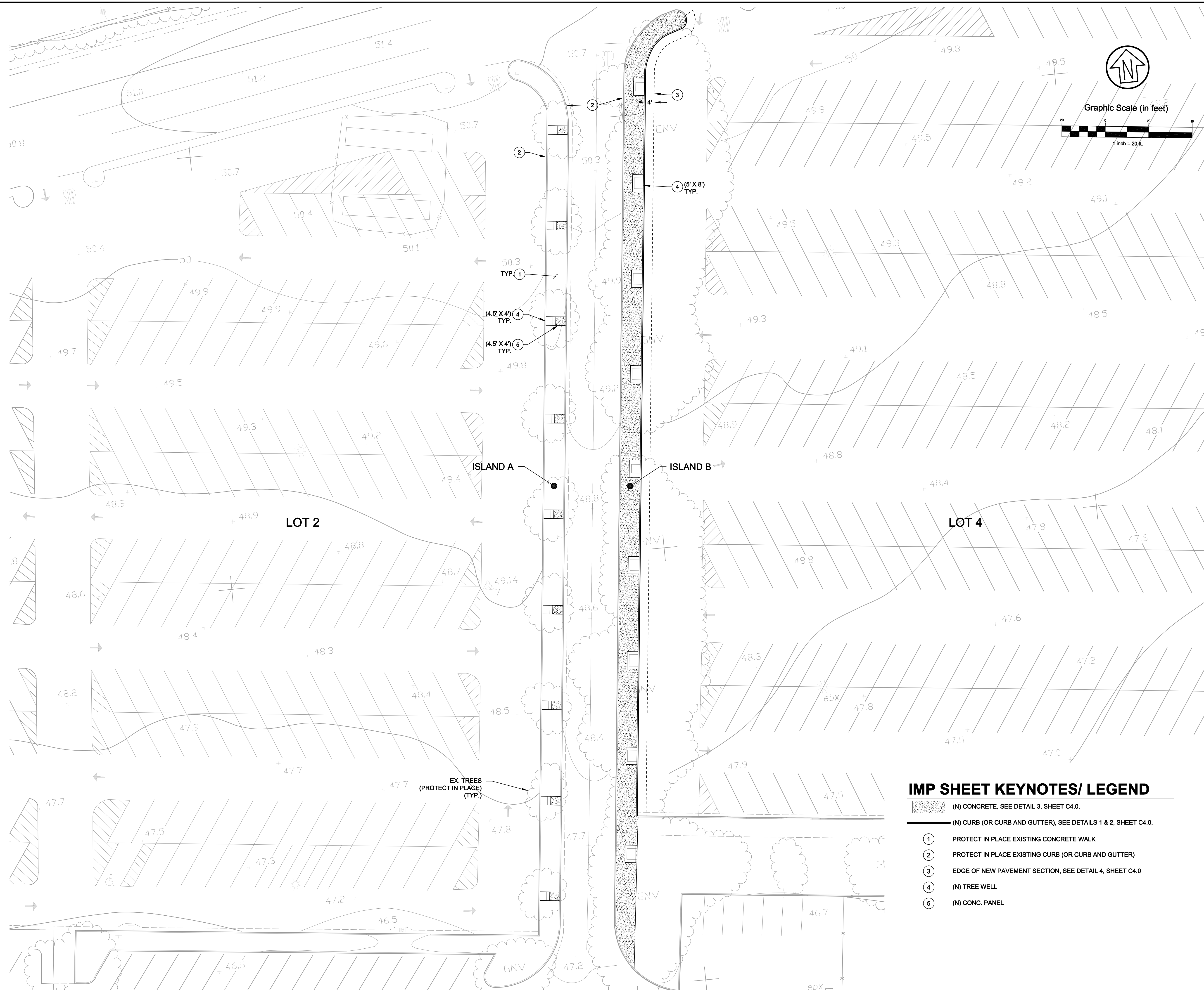
City Of  
**Fairfield**  
County Of  
**Solano**  
State Of  
**California**

Prepared Under the Direction of:

**DEMO SHEET KEYNOTES/ LEGEND**

- DEMOLISH EXISTING CONCRETE WALK
- DEMOLISH EXISTING CURB (OR CURB AND GUTTER)
- ① (NOT USED)
- ② PROTECT IN PLACE EXISTING CURB (OR CURB AND GUTTER)
- ③ EDGE OF NEW PAVEMENT SECTION. SEE DETAIL 4, SHEET C4.0.

|                 |             |
|-----------------|-------------|
| Sheet           | <b>C2.2</b> |
| Scale:          | 1" = 20'    |
| Date:           | 10/04/17    |
| Project Number: | 4.1164.11   |
| Plan File:      | D-XXXX-XX   |



| Rev | Date | Description | Designed | Drawn | Checked |
|-----|------|-------------|----------|-------|---------|
|     |      |             |          |       |         |
|     |      |             |          |       |         |
|     |      |             |          |       |         |
|     |      |             |          |       |         |

**PARKING LOT ISLAND IMPROVEMENTS  
 GRADING PLAN  
 (NORTH LOT ISLAND A AND ISLAND B)  
 SCCD FAIRFIELD CAMPUS**

City Of  
**Fairfield**  
 County Of  
**Solano**  
 State Of  
**California**

Prepared Under the Direction of:

|                 |             |
|-----------------|-------------|
| Sheet           | <b>C3.0</b> |
| Scale:          | 1" = 20'    |
| Date:           | 10/04/17    |
| Project Number: | 4.1164.11   |
| Plan File:      | D-XXXX-XX   |

- IMP SHEET KEYNOTES/ LEGEND**
- (N) CONCRETE, SEE DETAIL 3, SHEET C4.0.
  - (N) CURB (OR CURB AND GUTTER), SEE DETAILS 1 & 2, SHEET C4.0.
  - ① PROTECT IN PLACE EXISTING CONCRETE WALK
  - ② PROTECT IN PLACE EXISTING CURB (OR CURB AND GUTTER)
  - ③ EDGE OF NEW PAVEMENT SECTION, SEE DETAIL 4, SHEET C4.0
  - ④ (N) TREE WELL
  - ⑤ (N) CONC. PANEL

P:\0441164\1164\Sheet\_Drawing\CS-Grading-Plan-North-Island-10/27/2017-09:15 PM\_gbrnc:11



| Rev | Date | Description | Designed | Drawn | Checked |
|-----|------|-------------|----------|-------|---------|
|     |      |             |          |       |         |
|     |      |             |          |       |         |
|     |      |             |          |       |         |
|     |      |             |          |       |         |

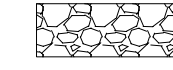
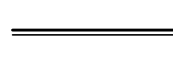
**PARKING LOT ISLAND IMPROVEMENTS  
GRADING PLAN  
(SOUTH LOT ISLAND C AND ISLAND D)  
SCCD FAIRFIELD CAMPUS**

City Of  
Fairfield  
County Of  
Solano  
State Of  
California

Prepared Under the Direction of:  
  
Sheet  
**C3.1**

Scale: 1" = 20'  
Date: 10/04/17  
Project Number: 4.1164.11  
Plan File: D-XXXX-XX

**IMP SHEET KEYNOTES/ LEGEND**

-  (N) DECOMPOSED GRANITE
-  (N) CURB (OR CURB AND GUTTER), SEE DETAILS 1 & 2, SHEET C4.0.
- ① (NOT USED)
- ② PROTECT IN PLACE EXISTING CURB (OR CURB AND GUTTER)
- ③ EDGE OF NEW PAVEMENT SECTION, SEE DETAIL 4, SHEET C4.0.
- ④ (N) TREE WELL

MATCHLINE  
SEE SHEET C3.1

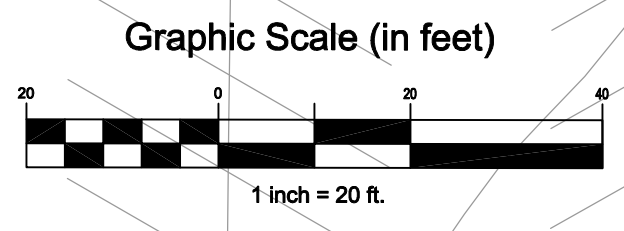
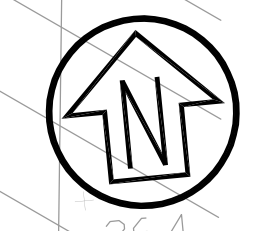
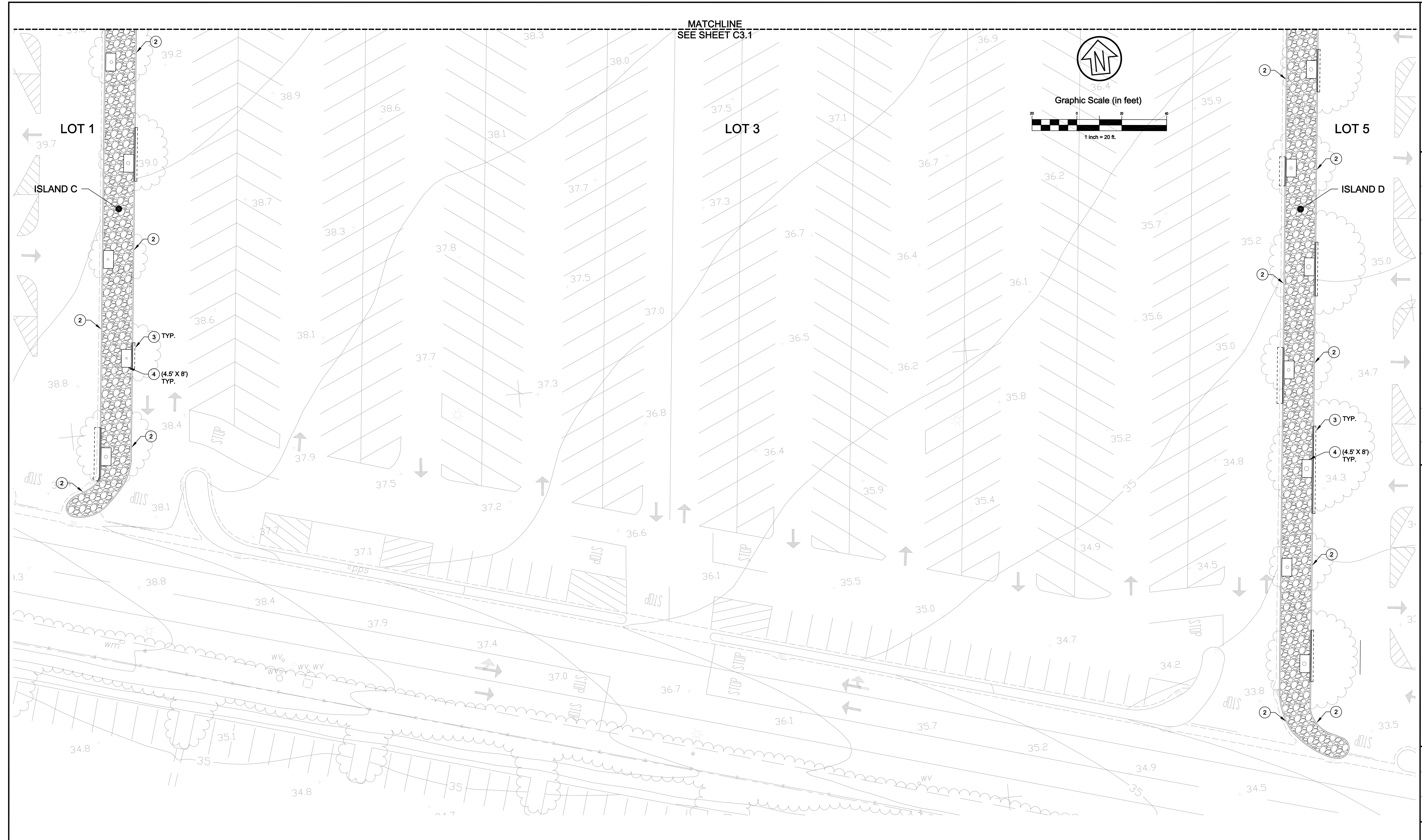
CSW | ST2

CSW/Stuber-Stroeh  
Engineering Group, Inc.

45 Leverett Court tel: 415.883.9850  
Novato, CA 94949 fax: 415.883.9856

Civil & Structural Engineers  
Surveying & Mapping  
Environmental Planning  
Land Planning  
Construction Management

http://www.cswst2.com © 2017



| Rev | Date   | Description | Designed | Drawn | Checked |
|-----|--------|-------------|----------|-------|---------|
|     | XXXXXX |             |          |       |         |

**PARKING LOT ISLAND IMPROVEMENTS  
GRADING PLAN CONT'D  
(SOUTH LOT ISLAND C AND ISLAND D)  
SCCD FAIRFIELD CAMPUS**

City Of  
Fairfield  
County Of  
Solano  
State Of  
California

Prepared Under the Direction of:

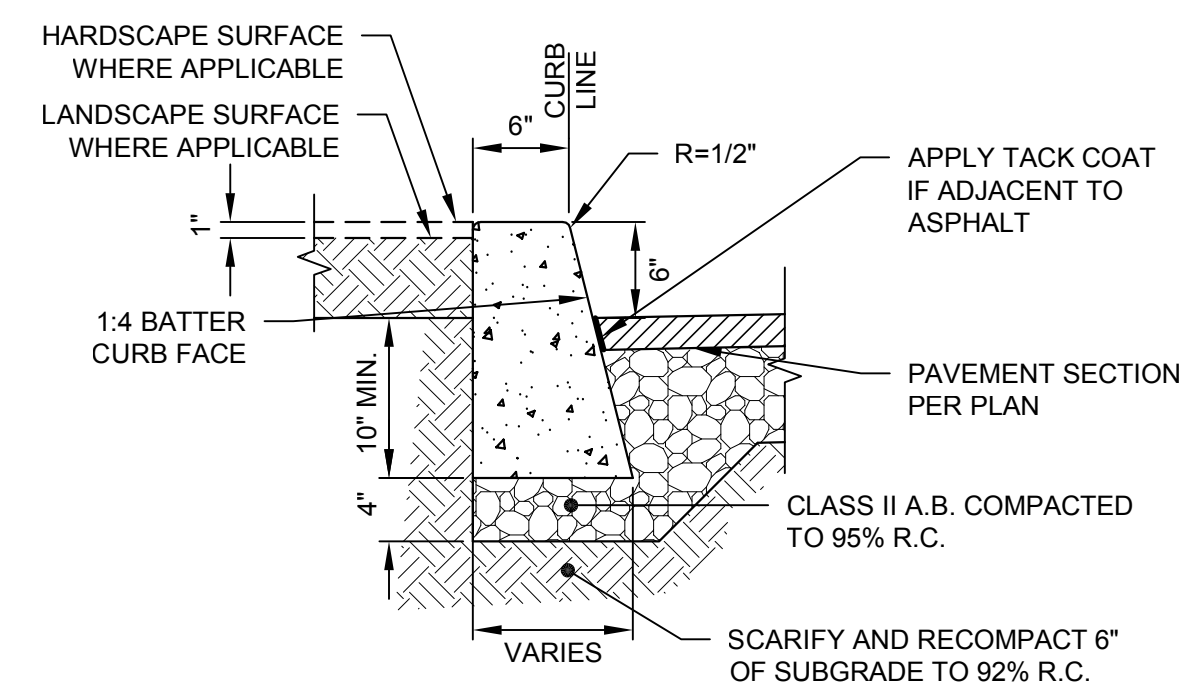
**IMP SHEET KEYNOTES/ LEGEND**

- (N) DECOMPOSED GRANITE
- (N) CURB (OR CURB AND GUTTER), SEE DETAILS 1 & 2, SHEET C4.0.
- ① (NOT USED)
- ② PROTECT IN PLACE EXISTING CURB (OR CURB AND GUTTER)
- ③ EDGE OF NEW PAVEMENT SECTION, SEE DETAIL 4, SHEET C4.0.
- ④ (N) TREE WELL

Sheet  
**C3.2**

Scale: 1" = 20'  
Date: 10/04/17  
Project Number: 4.1164.11  
Plan File: D-XXXX-XX

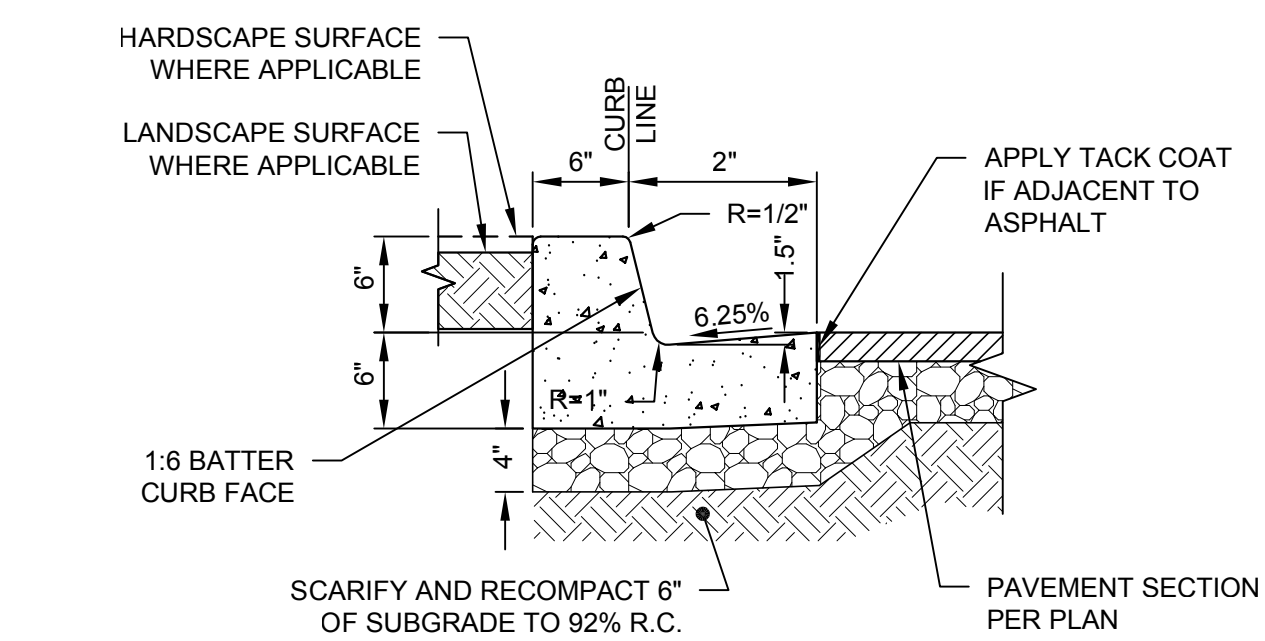




- NOTES:**
1. WHERE CONCRETE WALK IS ADJACENT TO CURB, PROVIDE ISOLATION JOINT BETWEEN WALK AND BACK OF CURB.
  2. CONTROL JOINTS CONSISTING OF 1\"/>

**1 STANDARD CONCRETE CURB**

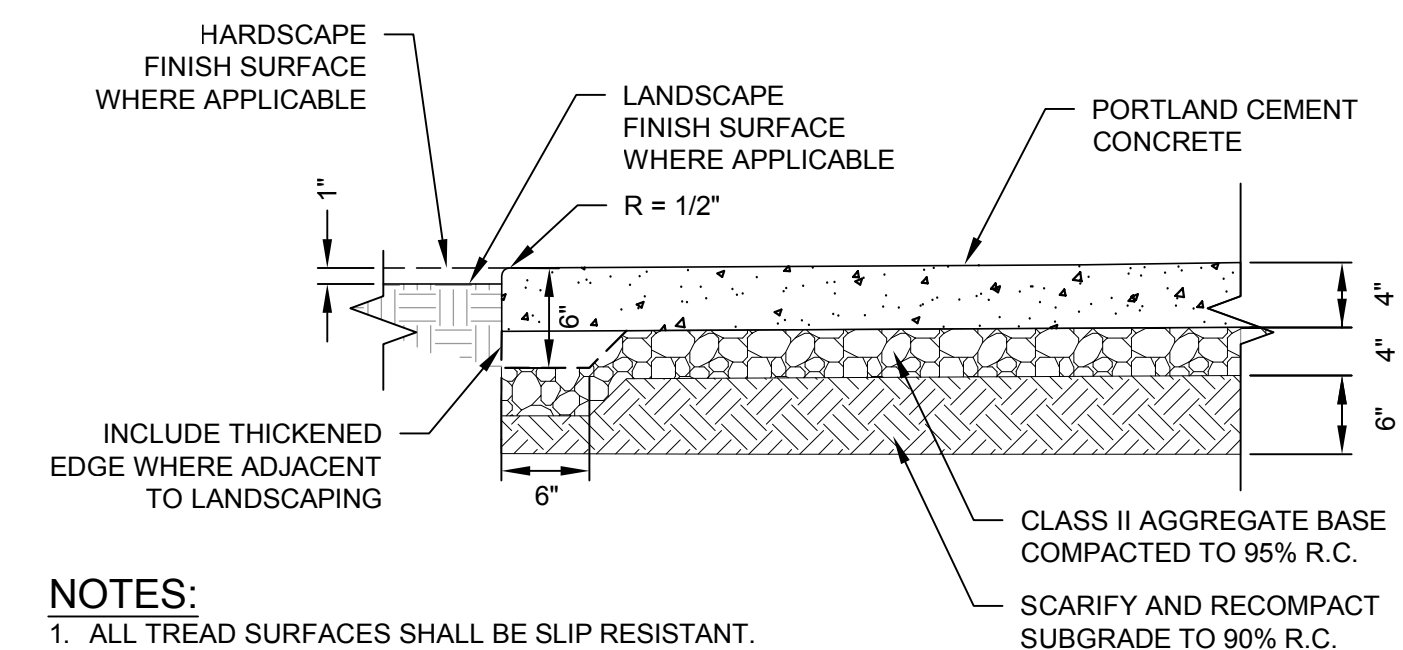
SCALE: 1\"/>



- NOTES:**
1. WHERE CONCRETE WALK IS ADJACENT TO CURB, PROVIDE ISOLATION JOINT BETWEEN WALK AND BACK OF CURB.
  2. CONTROL JOINTS CONSISTING OF 1\"/>

**2 STANDARD CONCRETE CURB WITH GUTTER**

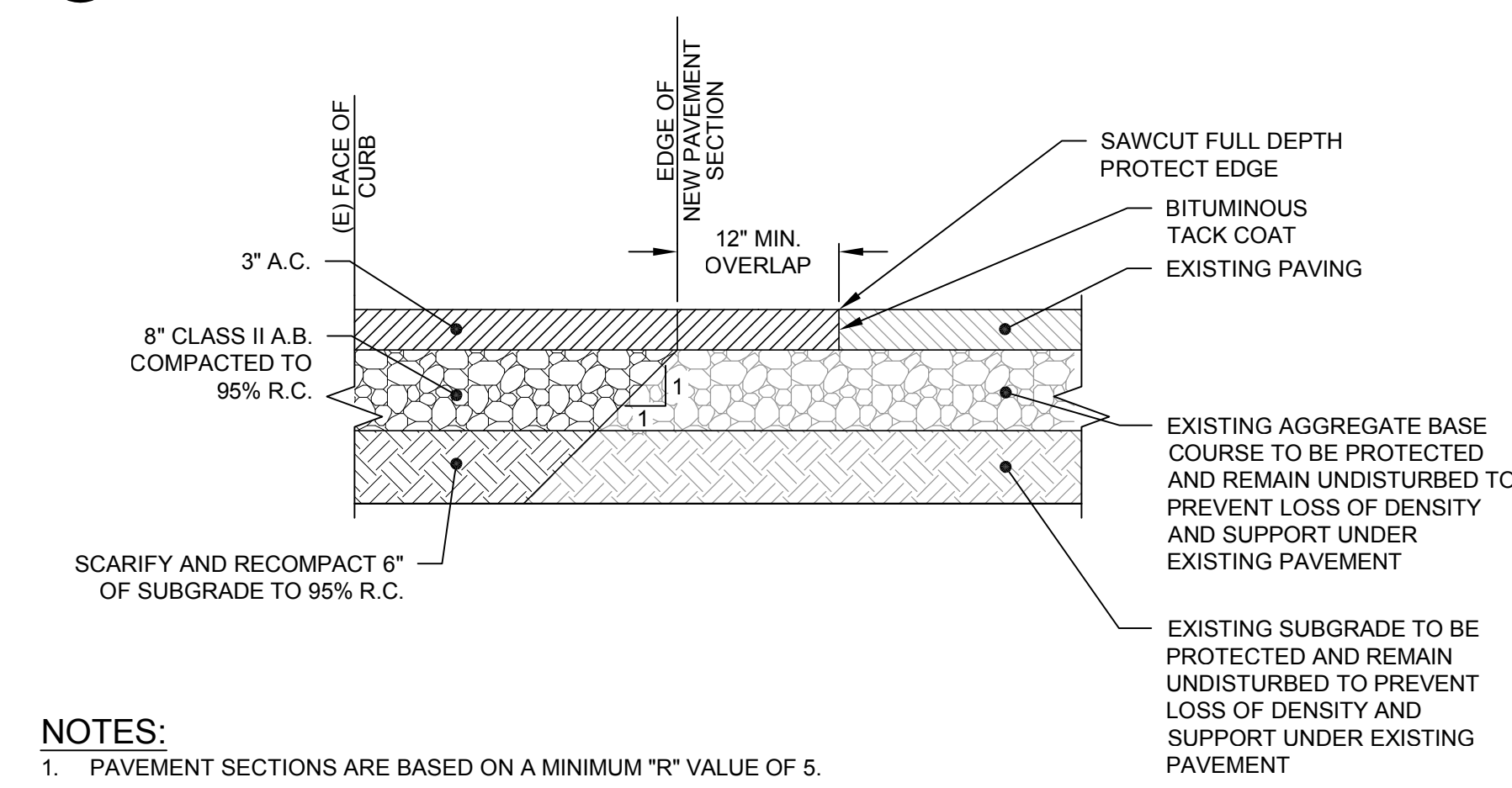
SCALE: 1\"/>



- NOTES:**
1. ALL TREAD SURFACES SHALL BE SLIP RESISTANT.
  2. REFER TO [ARCHITECTURAL/LANDSCAPE, ETC.] DRAWINGS/ SPECIFICATIONS FOR COLOR, PATTERN, TEXTURE AND FINISH.
  3. SEE PLAN FOR LOCATION OF JOINTS.

**3 PEDESTRIAN CONCRETE SECTION**

SCALE: 1\"/>



- NOTES:**
1. PAVEMENT SECTIONS ARE BASED ON A MINIMUM "R" VALUE OF 5.

**4 ASPHALT PAVEMENT SECTION AND SAWCUT/CONFORM**

SCALE: 1\"/>

| Checked | Drawn | Designed | Description | Date   | Rev |
|---------|-------|----------|-------------|--------|-----|
|         |       |          |             | XXXXXX | XXX |

**PARKING LOT ISLAND IMPROVEMENTS**

**DETAILS**

**SCCD FAIRFIELD CAMPUS**

City Of  
**Fairfield**

County Of  
**Solano**

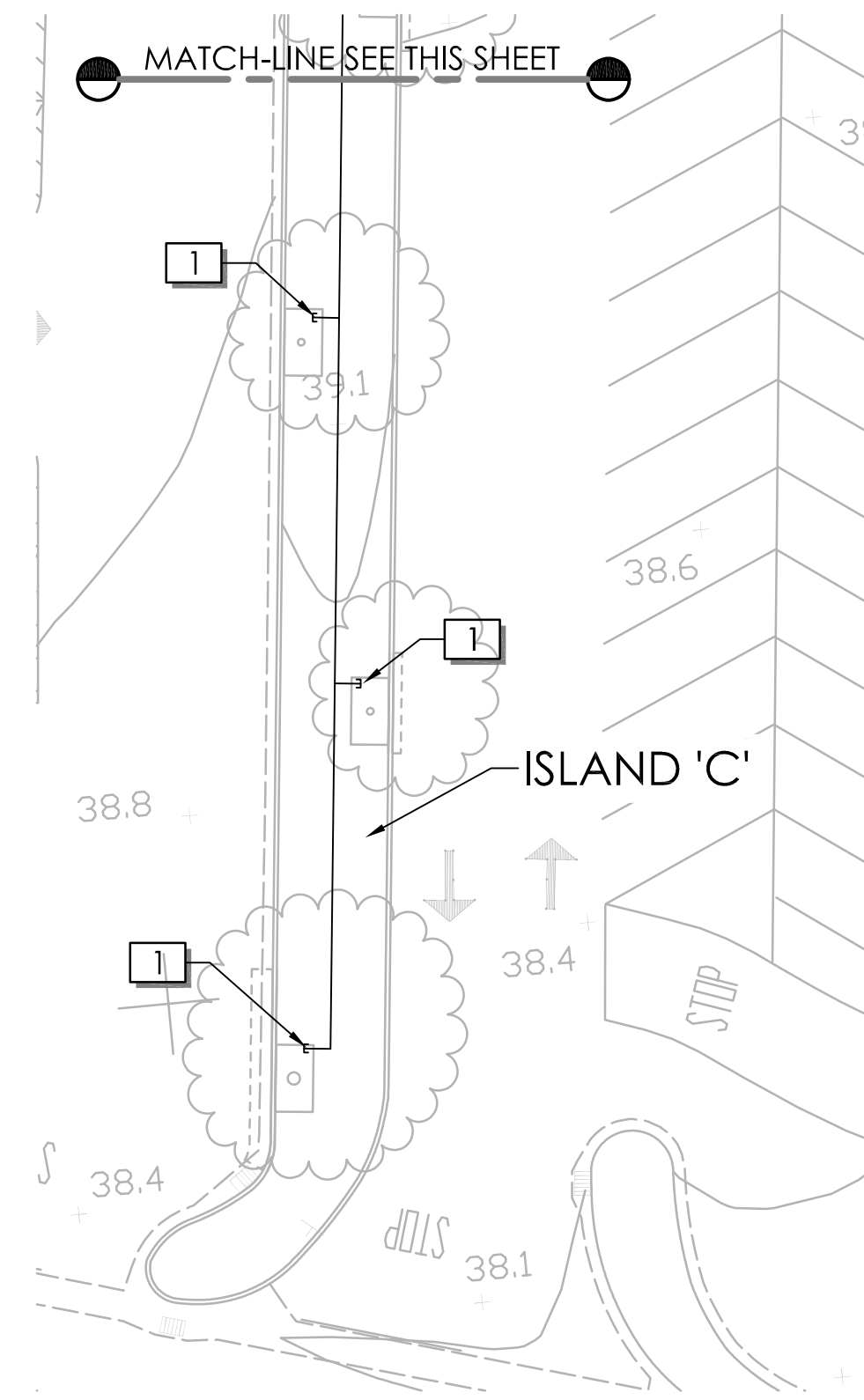
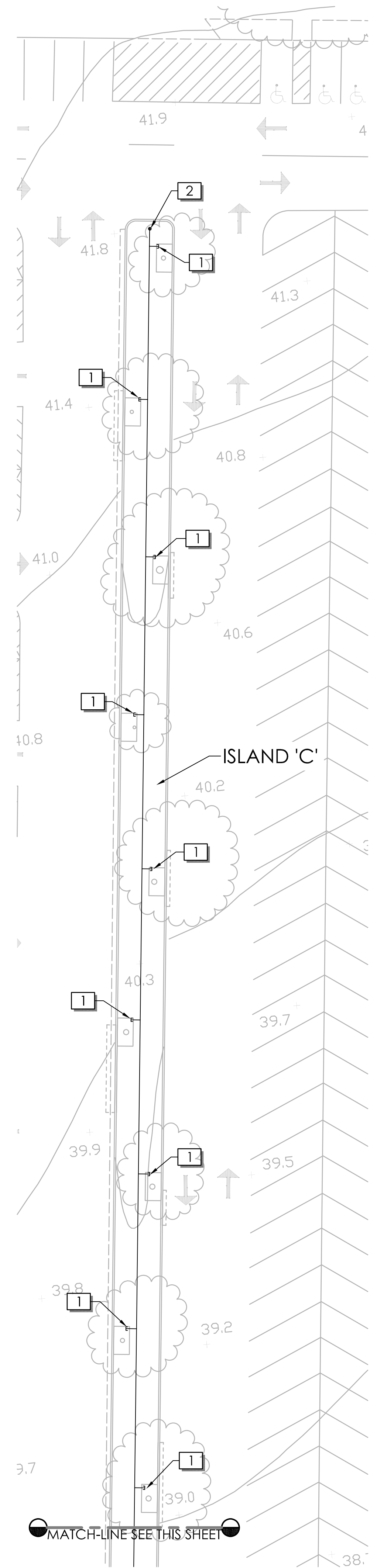
State Of  
**California**

Prepared Under the Direction of:

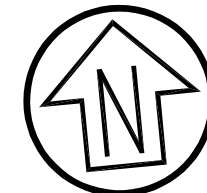
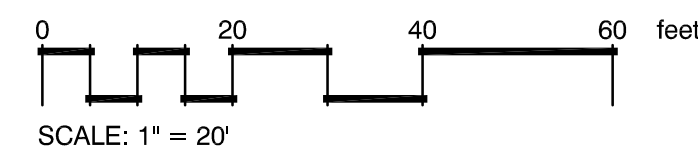
Sheet  
**C4.0**

Scale: N/A  
Date: 10/04/17  
Project Number: 4.1164.11  
Plan File: D-XXXX-XX





**IRRIGATION PLAN  
SOUTH ISLAND 'C'**



**KEY LEGEND**

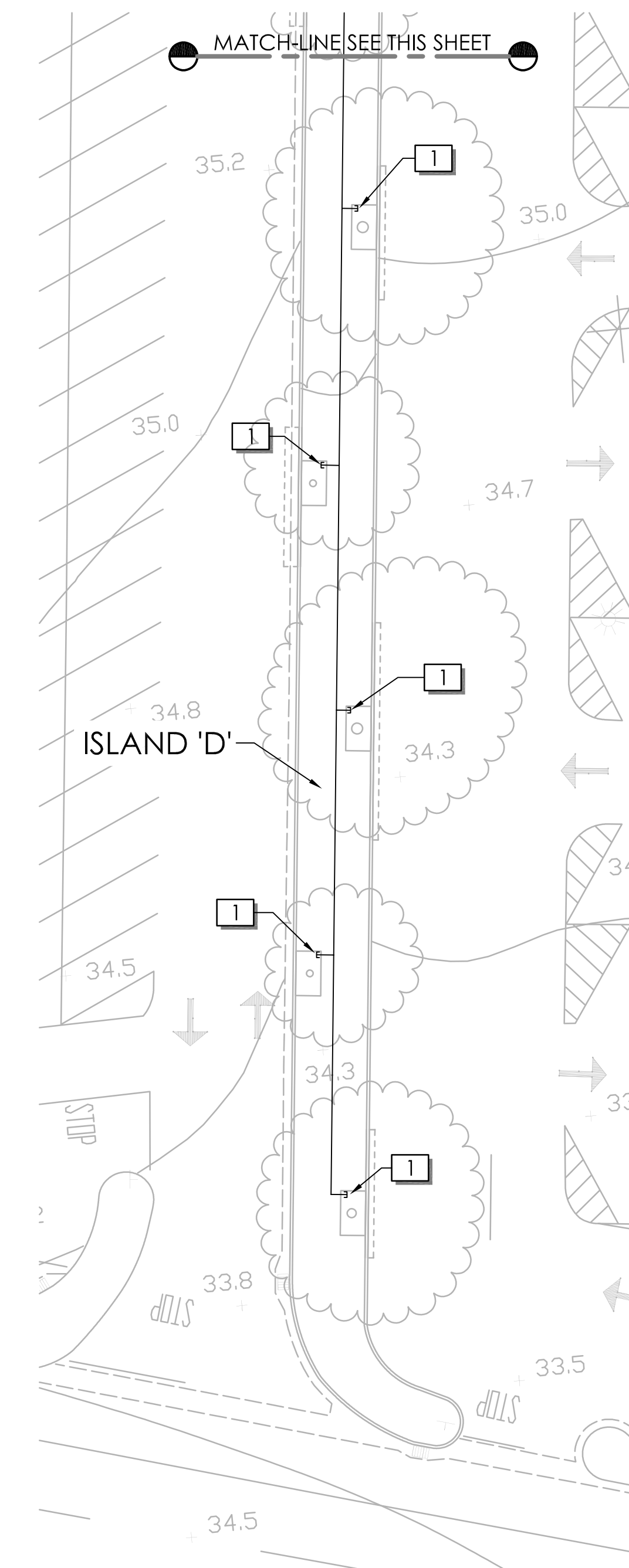
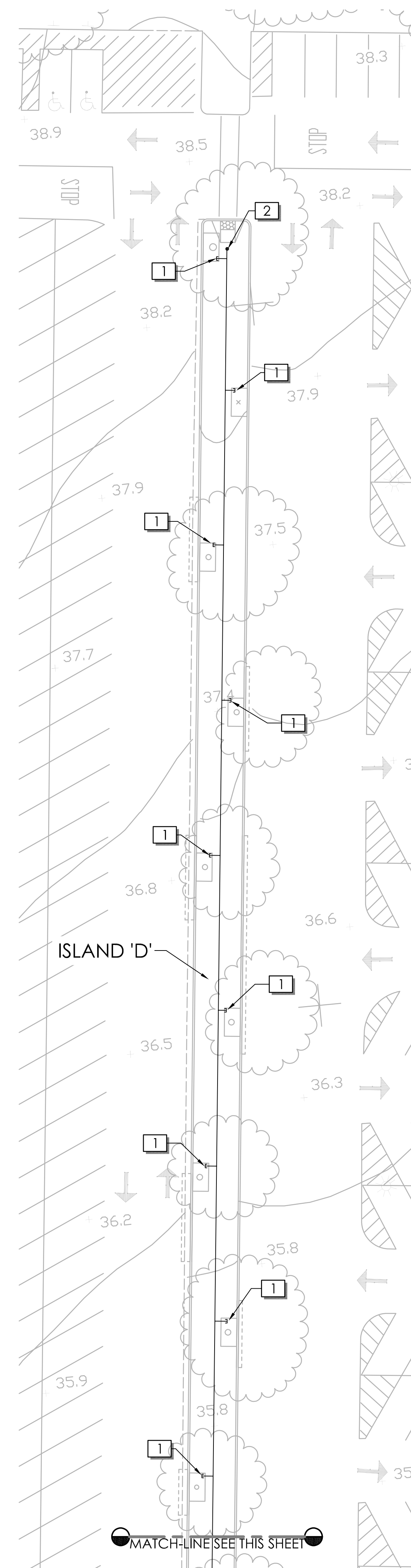
- 2" PVC SCH. 40 PVC SLEEVE
- SCH. 40 PVC LATERAL (3/4" OR AS OTHERWISE NOTED)
- 3/4" SCH. 80 PVC CAP/STUB ENCLOSED IN 6" ROUND VALVE BOX

**GENERAL NOTES**

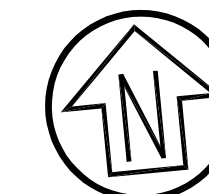
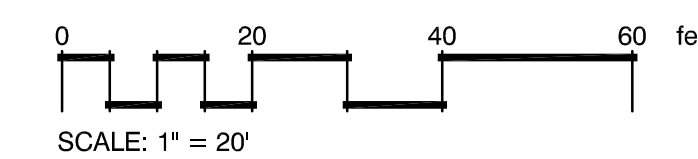
1. Irrigation improvements shown on this sheet shall be considered "Add-Alternate" work. Confirm actual scope with Client representative prior to bidding.
2. Contractor shall demolish and remove all existing and abandoned irrigation piping as necessary to install new irrigation pipe.

**REFERENCE NOTES SCHEDULE**

| SYMBOL | DESCRIPTION  |
|--------|--|
| 1      | Provide 3/4" stub/cap at existing/future tree well location. Sch 80 cap shall be enclosed in 6" round valve box. Top of valve box lid shall match existing finish grade. Note: existing trees will do not need irrigation. |
| 2      | Point of Connection- Locate existing lateral line and tie in with new lateral line. Verify location of existing lateral line and/or valve assembly prior to commencing construction.                                       |
| 3      | Preserve, protect and repair any irrigation equipment and tree roots impacted by new construction.   |



**IRRIGATION PLAN  
SOUTH ISLAND 'D'**

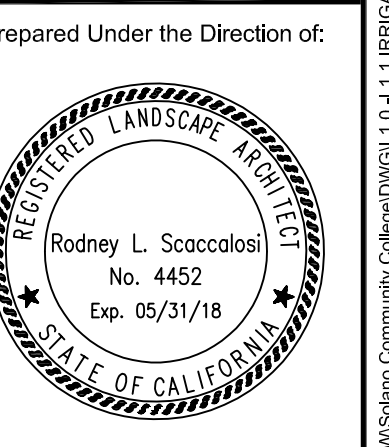


ROD SCACCALOSI  
LANDSCAPE ARCHITECT  
PO Box 2083  
Petaluma CA 94952  
707-280-8990  
rscac@sbcglobal.net

| Rev. | Date   | Description | Designed | Drawn | Checked |
|------|--------|-------------|----------|-------|---------|
| -    | XXXXXX | XXX         |          |       |         |

**PARKING LOT ISLAND IMPROVEMENTS  
IRRIGATION PLAN- ADD ALTERNATE  
SOUTH ISLANDS C & D  
SCCD FAIRFIELD CAMPUS**

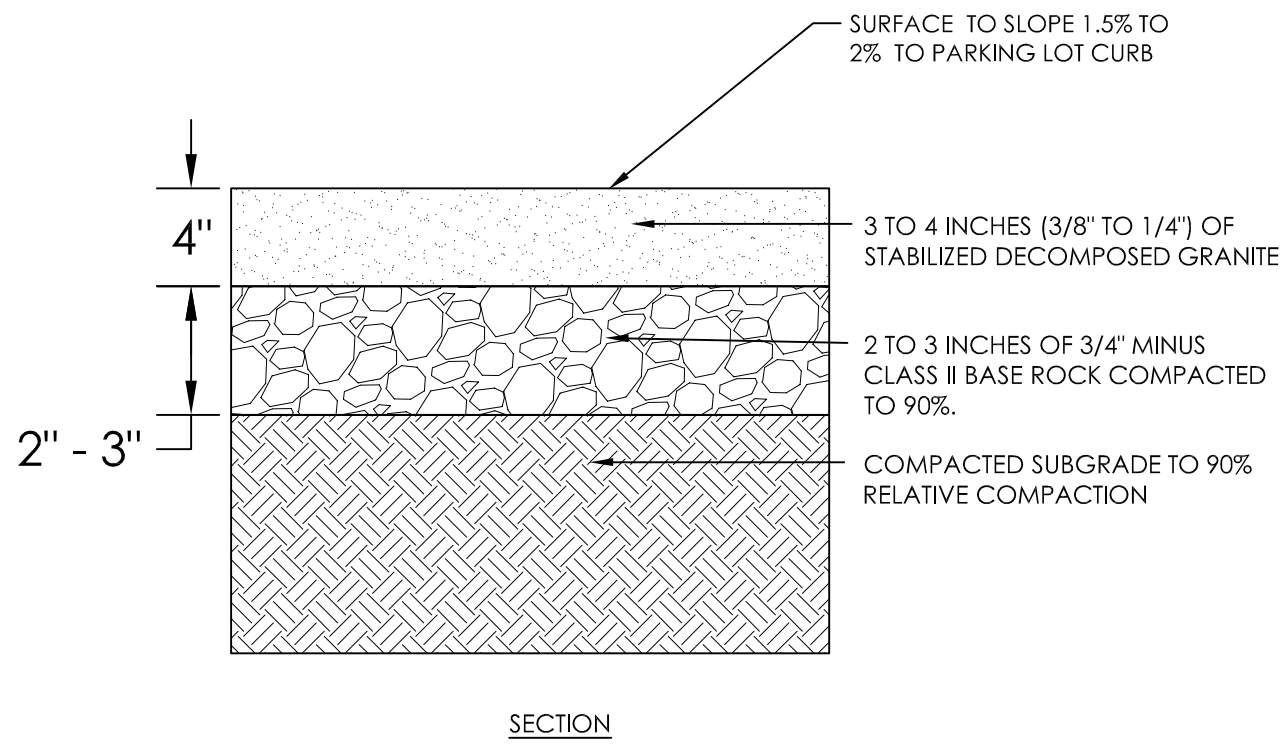
City Of  
**Fairfield**  
County Of  
**Solano**  
State Of  
**California**



|                 |             |
|-----------------|-------------|
| Sheet           | <b>L1.1</b> |
| Scale:          | 1" = 20'    |
| Date:           | 10/04/17    |
| Project Number: | 4.1164.11   |
| Plan File:      | D-XXXX-XX   |

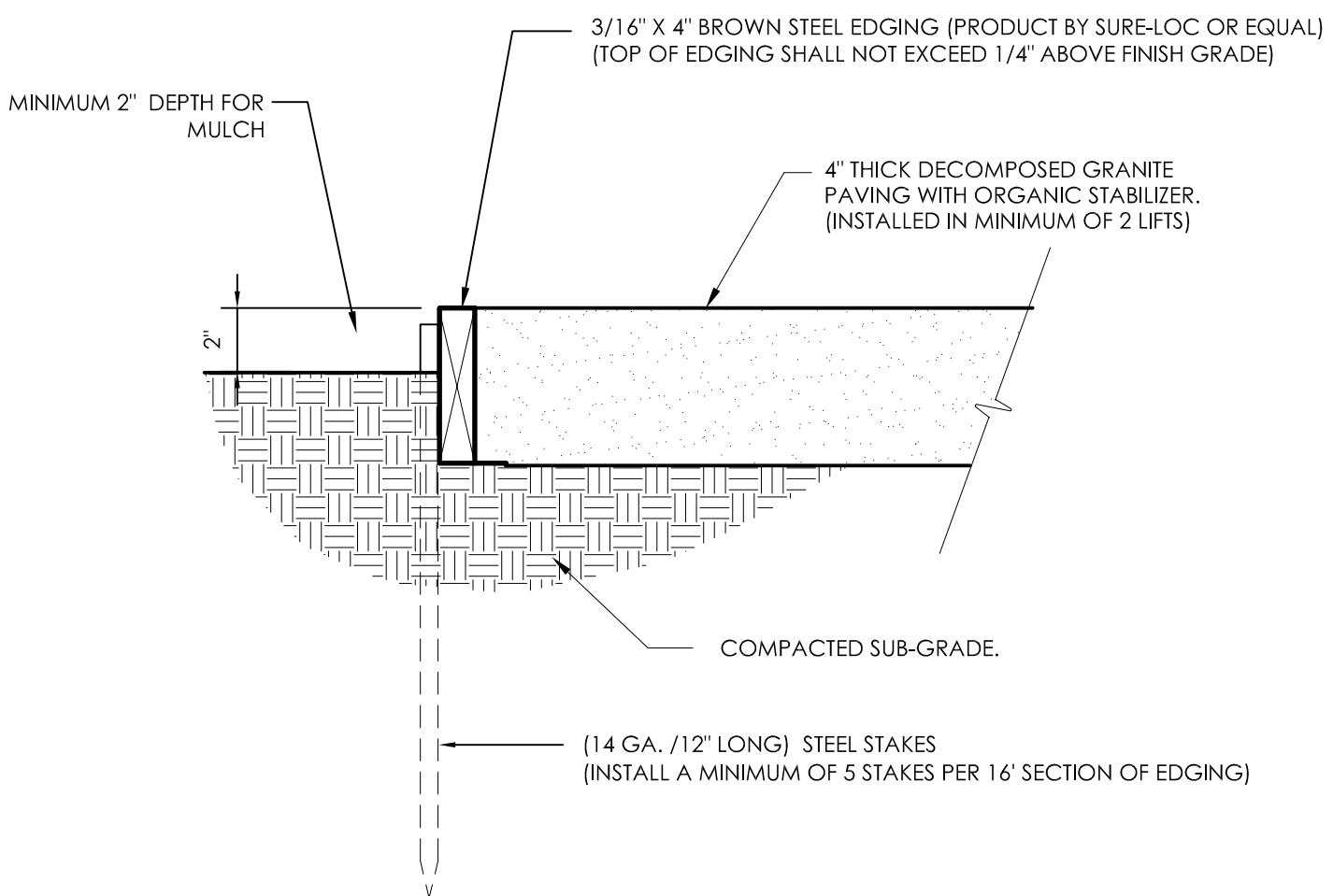
**LANDSCAPE SPECIFICATIONS**

- SAMPLES / SUBMITTALS** A mulch and Decomposed Granite product submittal shall be reviewed by Owner's Representative and Landscape Architect.
- MULCH / BARK / TOPDRESS**  
Planting areas should be mulched to help keep the soil and young plant roots at a desirable temperature, maintain moisture, and reduce weed growth. See reference note #4, this sheet and sheet L2.1. Mulch must be applied in an even and smooth layer over the planting area after final grading is complete and after the application of an appropriate herbicide.



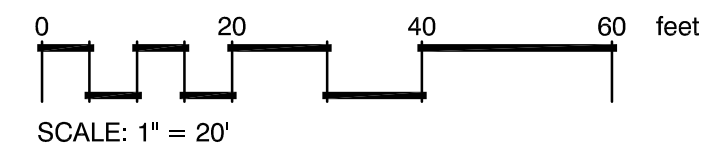
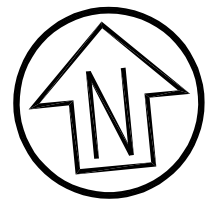
**NOTES:**  
1. INSTALLATION TO BE COMPLETED IN ACCORDANCE WITH MANUFACTURER'S SPECIFICATIONS.

**4 DECOMPOSED GRANITE PAVING**  
NTS DETAIL-FILE



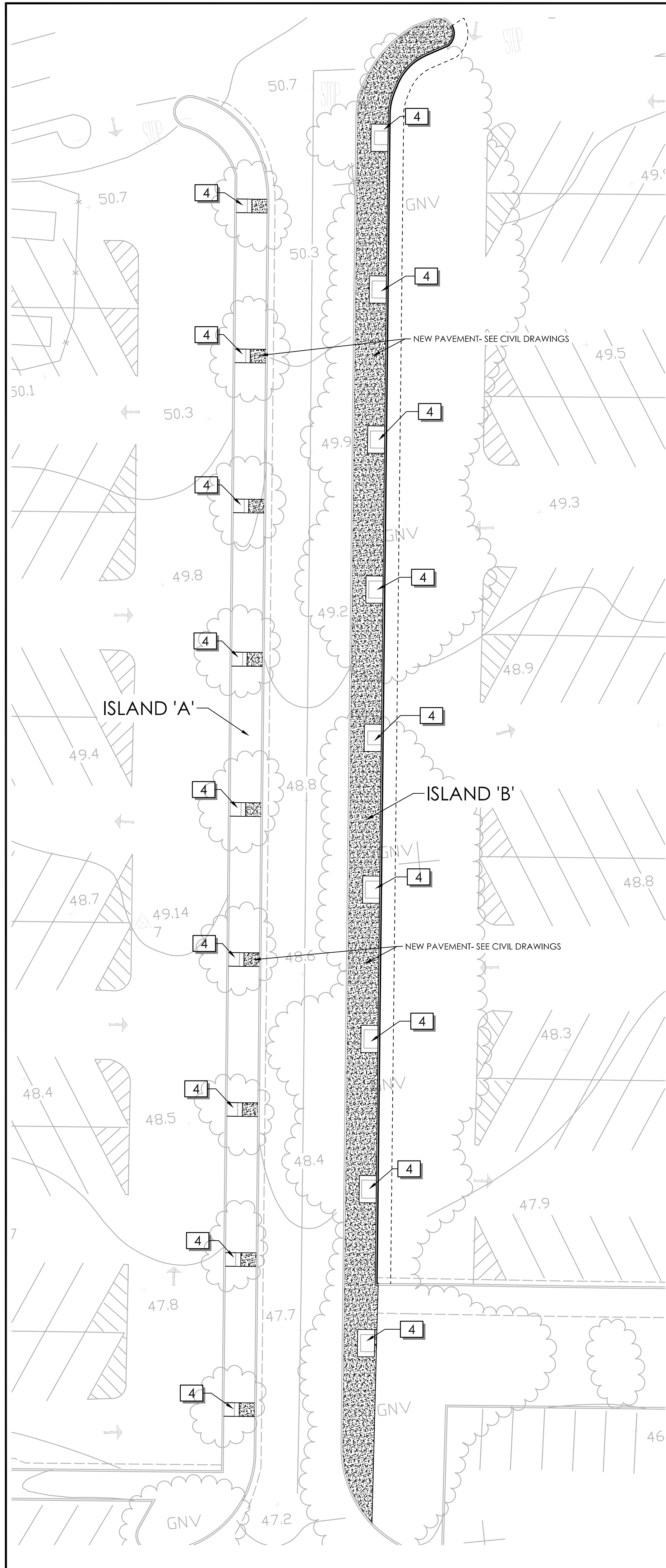
**5 EDGE AT DECOMPOSED GRANITE PAVING**  
NTS DETAIL-FILE

**LANDSCAPE PLAN  
NORTH LOT ISLANDS A & B**



**REFERENCE NOTES SCHEDULE**

| SYMBOL | DESCRIPTION   |
|--------|---|
| 4      | Install minimum 2" layer of organic bark mulch (1"-2" pathway bark or equivalent). Finish grade of mulch shall be equal or below lower than finish grade of adjacent pavement(s). Provide sample of bark to School District Representative to review prior to installation. |

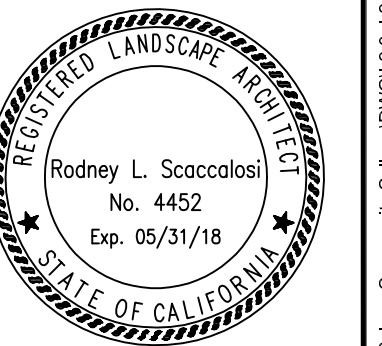


| Rev | Date   | Description | Drawn | Checked |
|-----|--------|-------------|-------|---------|
|     | XXXXXX |             |       |         |

**PARKING LOT ISLAND IMPROVEMENTS  
LANDSCAPE PLAN  
NORTH LOT ISLANDS A & B  
SCCD FAIRFIELD CAMPUS**

City Of  
**Fairfield**  
County Of  
**Solano**  
State Of  
**California**

Prepared Under the Direction of:



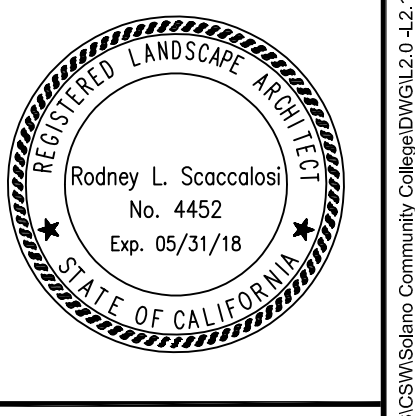
**ROD SCACCALOSI  
LANDSCAPE ARCHITECT**  
PO Box 2083  
Petaluma CA 94952  
707-280-8990  
rscac@sbglobal.net

|                 |             |
|-----------------|-------------|
| Sheet           | <b>L2.0</b> |
| Scale:          | 1" = 20'    |
| Date:           | 10/04/17    |
| Project Number: | 4.1164.11   |
| Plan File:      | D-XXXX-XX   |

| Rev. | Date   | Description | Designed | Drawn | Checked |
|------|--------|-------------|----------|-------|---------|
| 1    | XXXXXX | XXX         |          |       |         |

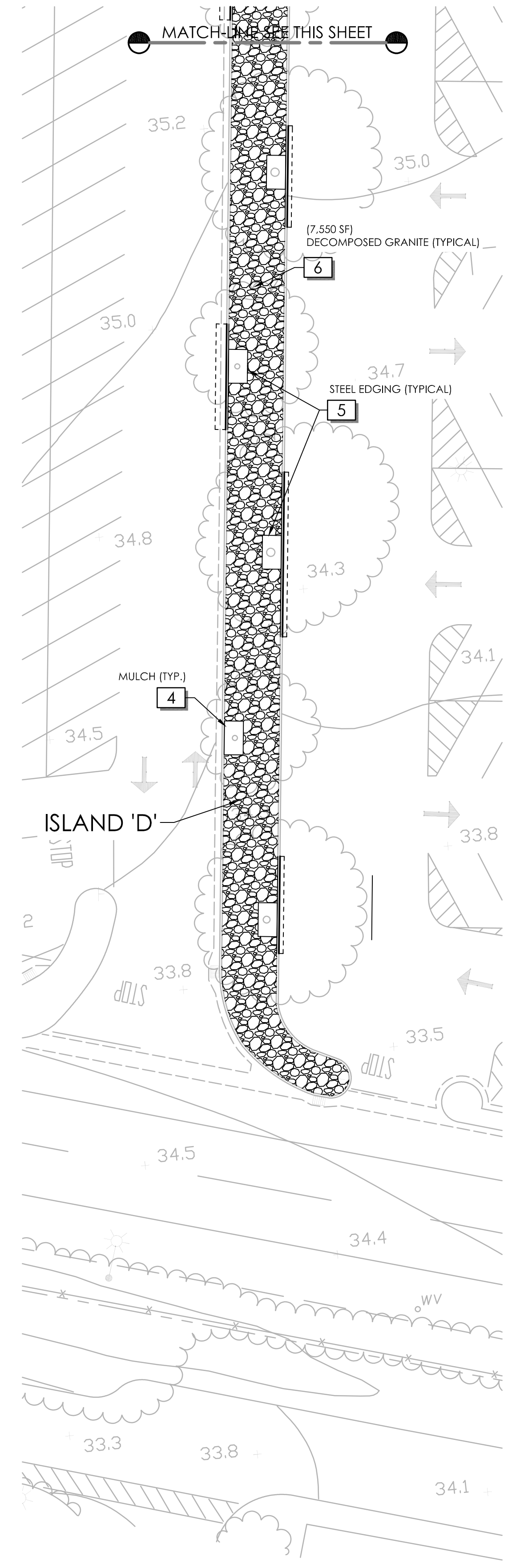
**PARKING LOT ISLAND IMPROVEMENTS  
 LANDSCAPE PLAN  
 SOUTH LOT ISLANDS C & D  
 SCCD FAIRFIELD CAMPUS**

City Of  
**Fairfield**  
 County Of  
**Solano**  
 State Of  
**California**

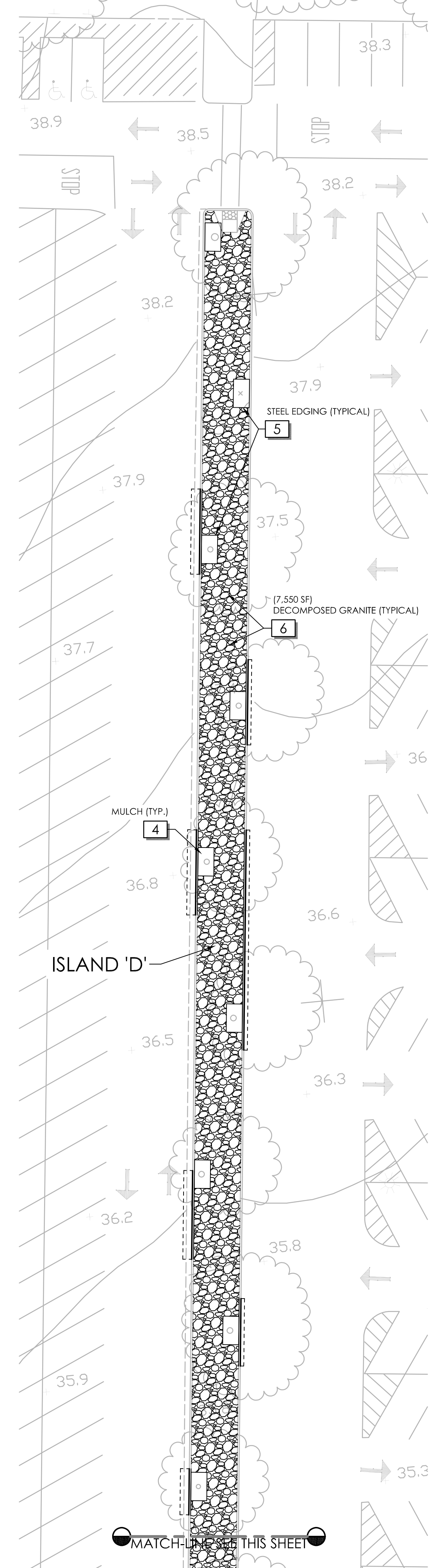
Prepared Under the Direction of:  


Sheet  
**L2.1**  
 Scale: 1" = 20'  
 Date: 10/04/17  
 Project Number: 4.1164.11  
 Plan File: D-XXXX-XX

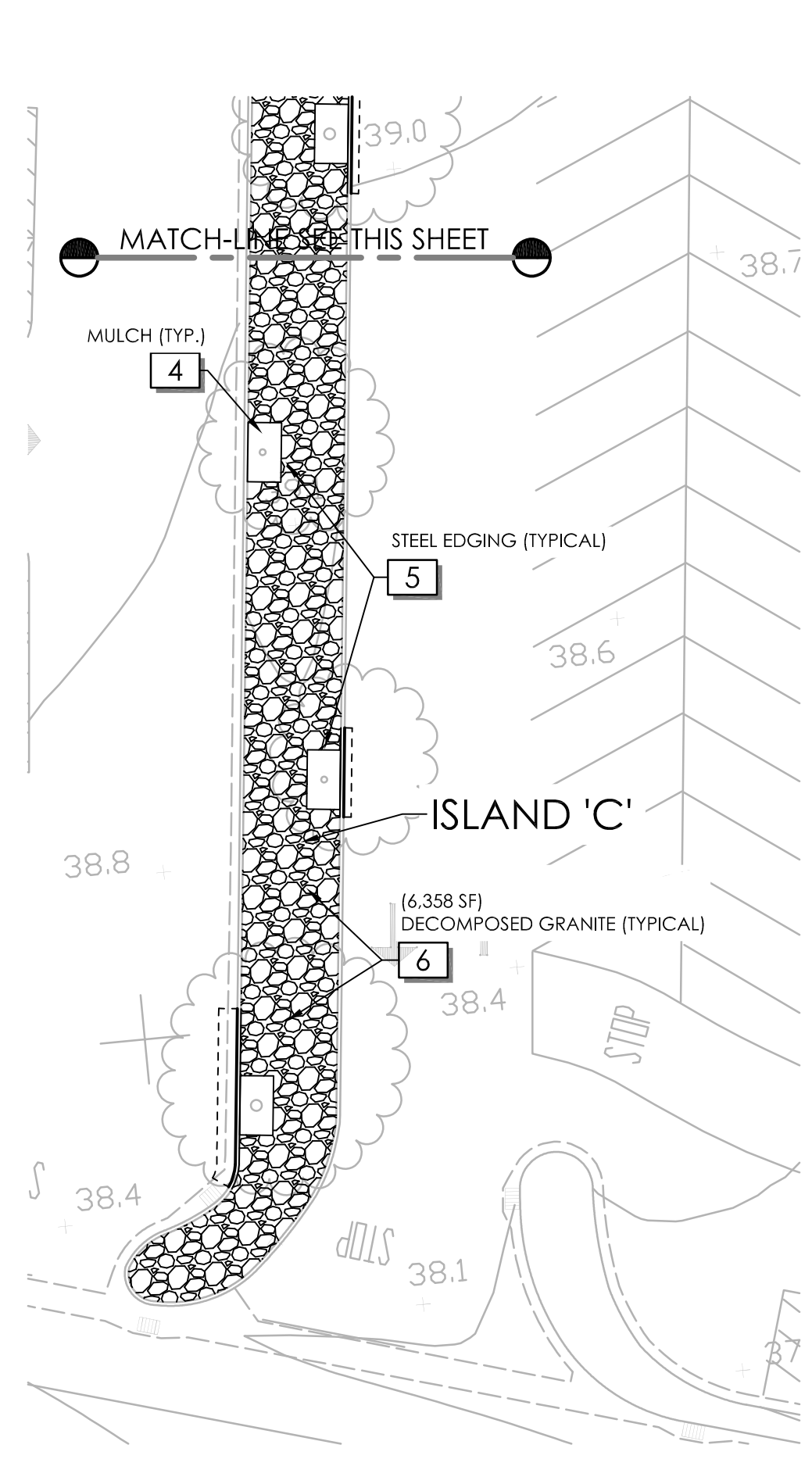
**ROD SCACCALOSI**  
 LANDSCAPE ARCHITECT  
 PO Box 2083  
 Petaluma CA 94952  
 707-280-8990  
 rscac@sbcglobal.net



**SOUTH ISLAND- 'D'**



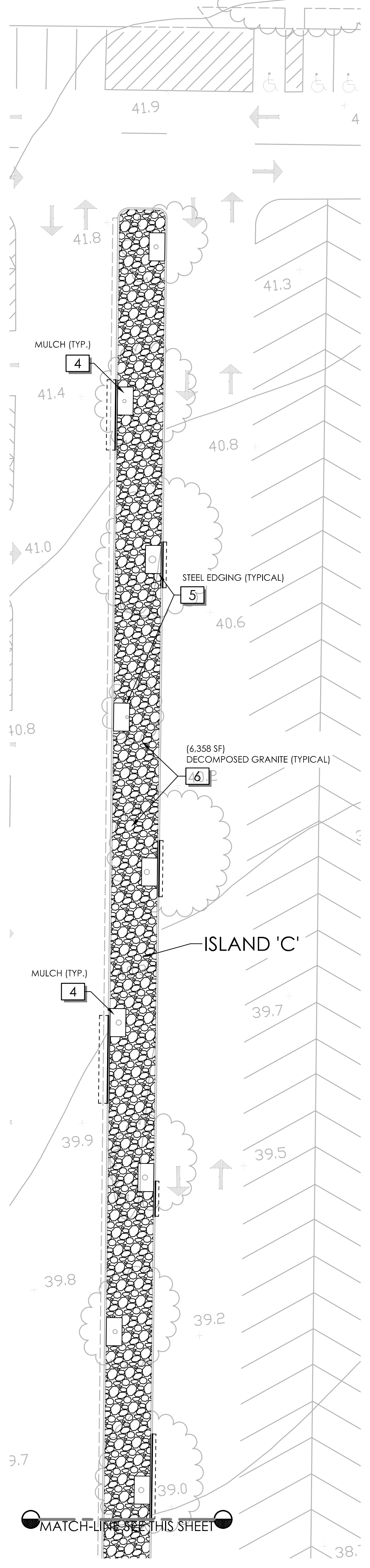
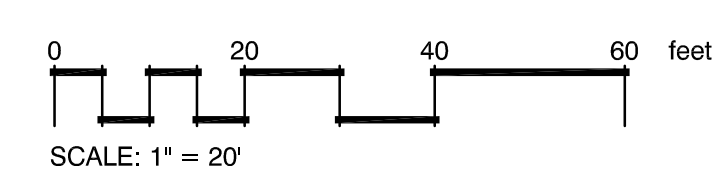
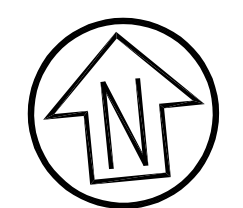
**SOUTH ISLAND 'C'**



**SOUTH ISLAND 'C'**

**REFERENCE NOTES SCHEDULE**

| SYMBOL | DESCRIPTION   |
|--------|---|
| 4      | Install minimum 2" layer of organic bark mulch (1"-2" pathway bark or equivalent). Finish grade of mulch shall be equal or below lower than finish grade of adjacent pavement(s). Provide sample of bark to School District Representative to review prior to installation.   |
| 5      | Install 1/8" x 4" black steel edging. Top of edging shall match finish grade of adjacent curb.  |
| 6      | Install 4" layer of 'California Gold' Decomposed Granite with an organic binder. The binder shall be from 'Stabilizer Solutions' or equal and shall installed per manufacturer's recommendations. Decomposed granite shall be installed in a minimum of 2 lifts and shall be finish graded with a 1.5 to 2% cross slope or crown so that surface storm water will be directed to parking lot gutters. |



**SOUTH ISLAND 'C'**