

## How many students took EW or CW?

The following headcounts are not unique. For example, some students dropped one course with a CW and one or more with an EW.

CW/EW HC and Enrollments

Student Reg Status	Summer 2019		Fall 2019		Spring 2020*		Summer 2020*		Fall 2020*		Spring 2021*		Summer 2021*		Fall 2021*	
	Headcount	Enrollments	Headcount	Enrollments	Headcount	Enrollments	Headcount	Enrollments	Headcount	Enrollments	Headcount	Enrollments	Headcount	Enrollments	Headcount	Enrollments
CW					1,727	2,821	161	228	705	1,283						
EW	2	2	40	67	97	154	72	83	188	301	62	125	21	36	115	193
Grand To..	2	2	40	67	1,816	2,975	232	311	873	1,584	62	125	21	36	115	193

## Demographics of Students who drop a class(es) with CW or EW

CW and EW Headcount (HC) and Enrollments  
by Ethnicity

Ethnicity Cat.	Summer 2019				Fall 2019				Spring 2020*				Summer 2020*				Fall 2020*				Spring 2021*				Summer 2021*				Fall 2021*			
	CW, EW	Total	Headcount	% of HC	CW, EW	Total	Headcount	% of HC	CW, EW	Total	Headcount	% of HC	CW, EW	Total	Headcount	% of HC	CW, EW	Total	Headcount	% of HC	CW, EW	Total	Headcount	% of HC	CW, EW	Total	Headcount	% of HC	CW, EW	Total	Headcount	% of HC
Hispanic			1,374	31.06%	15	37.50%	3,056	31.92%	578	31.83%	2,891	31.98%	87	37.50%	1,540	32.12%	290	33.22%	3,057	32.28%	18	29.03%	2,720	32.29%	4	19.05%	1,332	31.10%	36	31.30%	2,788	33.60%
White Non-Hispanic	1	50.00%	943	21.32%	10	25.00%	2,267	23.68%	437	24.06%	2,185	24.17%	40	17.24%	1,078	22.49%	170	19.47%	2,272	23.99%	19	30.65%	2,062	24.48%	5	23.81%	995	23.23%	22	19.13%	2,020	24.35%
Asian or Pacific Islander	1	50.00%	1,085	24.53%	5	12.50%	2,069	21.61%	377	20.76%	2,000	22.12%	34	14.66%	1,192	24.86%	155	17.75%	2,158	22.79%	10	16.13%	1,938	23.01%	2	9.52%	1,081	25.24%	27	23.48%	1,918	23.12%
Black Non-Hispanic			655	14.81%	5	12.50%	1,441	15.05%	325	17.90%	1,411	15.61%	53	22.84%	725	15.12%	204	23.37%	1,451	15.32%	13	20.97%	1,311	15.56%	10	47.62%	697	16.27%	26	22.61%	1,224	14.75%
Other			291	6.58%	4	10.00%	577	6.03%	72	3.96%	388	4.29%	12	5.17%	191	3.98%	29	3.32%	352	3.72%			242	2.87%			108	2.52%			184	2.22%
Am. Indian or Alaskan Native			54	1.22%			113	1.18%	21	1.16%	120	1.33%	5	2.16%	52	1.08%	15	1.72%	127	1.34%	1	1.61%	104	1.23%			48	1.12%	1	0.87%	103	1.24%
Null			22	0.50%	1	2.50%	50	0.52%	6	0.33%	46	0.51%	1	0.43%	16	0.33%	10	1.15%	53	0.56%	1	1.61%	46	0.55%			22	0.51%	3	2.61%	60	0.72%
Grand Total	2	100.00%	4,424	100.00%	40	100.00%	9,573	100.00%	1,816	100.00%	9,041	100.00%	232	100.00%	4,794	100.00%	873	100.00%	9,470	100.00%	62	100.00%	8,423	100.00%	21	100.00%	4,283	100.00%	115	100.00%	8,297	100.00%

The proportionality index method (See Appendix 2) was used to investigate if a subgroup was over-represented within the group of students that dropped a course or courses with a CW and/or EW, the following were the results by Ethnicity Category. In fall 2019, students that identified as Hispanic, White Non-Hispanic, Other and Null were over-represented in the volume of students that dropped a course or courses with an EW. Whereas in spring 2020 students that identified as Black non-Hispanic represented 15.6% of the student population, this same group represented 17.9% of the students that opted to drop a course or courses with a CW and/or EW. ( $17.9\%/15.6\%=1.15$ )

Ethnicity Category	Over Represented in CW/EW Population							
	Summer 2019	Fall 2019	Spring 2020*	Summer 2020*	Fall 2020*	Spring 2021*	Summer 2021*	Fall 2021*
Hispanic		Y		Y	Y			
White Non-Hispanic	Y	Y				Y	Y	
Asian or Pacific Islander	Y							Y
Black Non-Hispanic			Y	Y	Y	Y	Y	Y
Other		Y		Y				
Am. Indian or Alaskan Native				Y	Y	Y		
Null		Y		Y	Y	Y		Y

**CW and EW Headcount (HC) and Enrollments  
by Gender Group**

Gender	Summer 2019				Fall 2019				Spring 2020*				Summer 2020*				Fall 2020*				Spring 2021*				Summer 2021*				Fall 2021*			
	CW, EW	Headcount	% of HC	Total	CW, EW	Headcount	% of HC	Total	CW, EW	Headcount	% of HC	Total	CW, EW	Headcount	% of HC	Total	CW, EW	Headcount	% of HC	Total	CW, EW	Headcount	% of HC	Total	CW, EW	Headcount	% of HC	Total	CW, EW	Headcount	% of HC	Total
Female	1	50.00%	2,682	60.75%	31	77.50%	5,445	56.97%	957	52.70%	5,148	57.03%	121	52.16%	3,004	62.73%	415	47.54%	5,554	58.69%	30	48.39%	4,915	58.38%	14	56.67%	2,601	60.73%	59	51.30%	4,690	56.53%
Male	1	50.00%	1,632	36.96%	6	15.00%	3,903	40.83%	810	44.60%	3,672	40.68%	105	45.26%	1,696	35.41%	439	50.29%	3,699	39.09%	29	46.77%	3,353	39.83%	6	28.57%	1,611	37.61%	52	45.22%	3,412	41.12%
Null & No.			101	2.29%	3	7.50%	210	2.20%	49	2.70%	207	2.29%	6	2.59%	89	1.86%	19	2.18%	210	2.22%	3	4.84%	151	1.79%	1	4.76%	71	1.66%	4	3.48%	195	2.35%
Grand To.	2	100.00%	4,415	100.00%	40	100.00%	9,558	100.00%	1,816	100.00%	9,027	100.00%	232	100.00%	4,789	100.00%	873	100.00%	9,463	100.00%	62	100.00%	8,419	100.00%	21	100.00%	4,283	100.00%	115	100.00%	8,297	100.00%

The proportionality index method (See Appendix 2) was used to investigate if a gender subgroup was over-represented within the group of students that dropped a course or courses with a CW and/or EW. In fall 2019, students that identified as female (77.5%/56.97%=1.36) and unknown/unreported gender (7.5%/2.20%=3.41) were over-represented in the volume of students that dropped a course or courses with an EW. Whereas in spring 2020 students that identified as male (44.6%/40.68%=1.10) and unknown/unreported gender (2.7%/2.29%=1.18) were the over-represented subgroups among the students that opted to drop a course or courses with a CW and/or EW.

Gender (group)	Over Represented in CW/EW Population							
	Summer 2019	Fall 2019	Spring 2020*	Summer 2020*	Fall 2020*	Spring 2021*	Summer 2021*	Fall 2021*
Female		Y					Y	
Male	Y		Y	Y	Y	Y		Y
Null & Not Reported		Y	Y	Y		Y	Y	Y

**CW and EW Headcount (HC) and Enrollments  
by Age Group**

AGE (gro. Null 17 or you. 18-24 25-30 31-40 41 or old. Grand To.)	Summer 2019				Fall 2019				Spring 2020*				Summer 2020*				Fall 2020*				Spring 2021*				Summer 2021*				Fall 2021*			
	CW, EW	% of HC	Total	% of HC	CW, EW	% of HC	Total	% of HC	CW, EW	% of HC	Total	% of HC	CW, EW	% of HC	Total	% of HC	CW, EW	% of HC	Total	% of HC	CW, EW	% of HC	Total	% of HC	CW, EW	% of HC	Total	% of HC				
	Headcount	% of HC	Headcount	% of HC	Headcount	% of HC	Headcount	% of HC	Headcount	% of HC	Headcount	% of HC	Headcount	% of HC	Headcount	% of HC	Headcount	% of HC	Headcount	% of HC	Headcount	% of HC	Headcount	% of HC	Headcount	% of HC	Headcount	% of HC				
			768	17.40%	2	5.00%	1,173	12.27%	78	4.30%	893	9.89%	23	9.91%	624	13.03%	76	8.71%	1,148	12.13%	3	4.84%	823	9.78%	2	9.52%	630	14.71%	31	26.96%	1,038	12.51%
	2	100.00%	2,156	48.83%	25	62.50%	5,031	52.64%	1,132	62.33%	4,760	52.73%	92	39.66%	2,351	49.09%	426	48.80%	4,857	51.33%	26	41.94%	4,320	51.31%	4	19.05%	2,003	46.77%	33	28.70%	4,265	51.40%
			679	15.38%	4	10.00%	1,344	14.06%	236	13.00%	1,358	15.04%	49	21.12%	801	16.73%	139	15.92%	1,438	15.20%	6	9.68%	1,329	15.79%	6	28.57%	660	15.41%	8	6.96%	1,166	14.05%
	1	10.00%	469	10.62%	2	5.00%	1,048	10.96%	183	10.08%	1,056	11.70%	36	15.52%	629	13.13%	103	11.80%	1,127	11.91%	12	19.35%	1,095	13.01%	5	23.81%	599	13.99%	20	17.39%	1,048	12.63%
			343	7.77%	7	17.50%	960	10.04%	187	10.30%	960	10.63%	32	13.79%	384	8.02%	129	14.78%	891	9.42%	15	24.19%	852	10.12%	4	19.05%	391	9.13%	23	20.00%	780	9.40%
	2	100.00%	4,415	100.00%	40	100.00%	9,558	100.00%	1,816	100.00%	9,027	100.00%	232	100.00%	4,789	100.00%	873	100.00%	9,463	100.00%	62	100.00%	8,419	100.00%	21	100.00%	4,283	100.00%	115	100.00%	8,297	100.00%

The proportionality index method (See Appendix 2) was used to investigate if an age subgroup was over-represented within the group of students that dropped a course or courses with a CW and/or EW. In fall 2019, students 18-24 years old (62.5%/52.64%=1.19) and those over 41 (17.5%/10.04%=1.74) were over-represented in the volume of students that dropped a course or courses with an EW. Whereas in spring 2020 students 18-24 years old (62.33%/52.73%=1.18) were overrepresented subgroups among the students that opted to drop a course or courses with a CW and/or EW.

AGE (group)	Over Represented in CW/EW Population							
	Summer 2019	Fall 2019	Spring 2020*	Summer 2020*	Fall 2020*	Spring 2021*	Summer 2021*	Fall 2021*
Null								
17 or younger								Y
18-24	Y	Y	Y					
25-30				Y	Y		Y	
31-40				Y		Y	Y	Y
41 or older		Y		Y	Y	Y	Y	Y

## CW for EOPS Students (headcount and courses)

CW and EW Headcount (HC) and Enrollments  
by EOPS

	Summer 2019				Fall 2019				Spring 2020*				Summer 2020*				Fall 2020*				Spring 2021*				Summer 2021*				Fall 2021*			
	CW, EW	Headcount	% of HC	Total	CW, EW	Headcount	% of HC	Total	CW, EW	Headcount	% of HC	Total	CW, EW	Headcount	% of HC	Total	CW, EW	Headcount	% of HC	Total	CW, EW	Headcount	% of HC	Total	CW, EW	Headcount	% of HC	Total	CW, EW	Headcount	% of HC	Total
EOPS La.																																
EOPS																																
Net EOPS	2	100.00%	4,330	98.07%	39	97.50%	9,363	97.96%	1,749	96.31%	8,831	97.83%	232	100.00%	4,789	100.00%	828	94.85%	9,286	98.13%	54	87.10%	8,238	97.85%	21	100.00%	4,283	100.00%	107	93.04%	8,144	98.16%
Grand Tot.	2	100.00%	4,415	100.00%	40	100.00%	9,558	100.00%	1,816	100.00%	9,027	100.00%	232	100.00%	4,789	100.00%	873	100.00%	9,463	100.00%	62	100.00%	8,419	100.00%	21	100.00%	4,283	100.00%	115	100.00%	8,297	100.00%

The proportionality index method (See Appendix 2) was used to investigate if EOPS students were over-represented within the group of students that dropped a course or courses with a CW and/or EW. In fall 2019, EOPS students (2.50%/2.04%=1.23) were over-represented in the volume of students that dropped a course or courses with an EW. Again, in spring 2020, EOPS students (3.69%/2.17%=1.7) were over-represented among the students that opted to drop a course or courses with a CW and/or EW.

EOPS Label	Over Represented in CW/EW Population							
	Summer 2019	Fall 2019	Spring 2020*	Summer 2020*	Fall 2020*	Spring 2021*	Summer 2021*	Fall 2021*
EOPS		Y	Y		Y	Y		Y
Not EOPS	Y							

## CW for DSP Students (headcount and courses)

CW and EW Headcount (HC) and Enrollments  
by DSP

	Summer 2019				Fall 2019				Spring 2020*				Summer 2020*				Fall 2020*				Spring 2021*				Summer 2021*				Fall 2021*			
	CW, EW	Total	CW, EW	Total	CW, EW	Total	CW, EW	Total	CW, EW	Total	CW, EW	Total	CW, EW	Total	CW, EW	Total	CW, EW	Total	CW, EW	Total	CW, EW	Total	CW, EW	Total	CW, EW	Total	CW, EW	Total				
DSP Label	Headcount	% of HC	Headcount	% of HC	Headcount	% of HC	Headcount	% of HC	Headcount	% of HC	Headcount	% of HC	Headcount	% of HC	Headcount	% of HC	Headcount	% of HC	Headcount	% of HC	Headcount	% of HC	Headcount	% of HC	Headcount	% of HC	Headcount	% of HC				
DSP			59	1.34%	3	7.50%	359	3.76%	84	4.63%	347	3.84%	3	1.29%	44	0.92%	26	2.98%	172	1.82%	11	17.74%	193	2.29%	43	1.00%	8	6.96%	232	2.80%		
Not DSP			4,356	98.66%	37	92.50%	9,199	96.24%	1,732	95.37%	8,680	96.16%	229	98.71%	4,745	99.08%	847	97.02%	9,291	98.18%	51	82.26%	8,226	97.71%	21	100.00%	4,240	99.00%	107	93.04%	8,065	97.20%
Grand Tot.	2	100.00%	4,415	100.00%	40	100.00%	9,558	100.00%	1,816	100.00%	9,027	100.00%	232	100.00%	4,789	100.00%	873	100.00%	9,463	100.00%	62	100.00%	8,419	100.00%	21	100.00%	4,283	100.00%	115	100.00%	8,297	100.00%

The proportionality index method (See Appendix 2) was used to investigate if DSP students were over-represented within the group of students that dropped a course or courses with a CW and/or EW. In fall 2019, DSP students (7.5%/3.76%=1.99) were over-represented in the volume of students that dropped a course or courses with an EW. Again, in spring 2020, DSP students (4.63%/3.84%=1.21) were over-represented among the students that opted to drop a course or courses with a CW and/or EW.

DSP Label	Over Represented in CW/EW Population							
	Summer 2019	Fall 2019	Spring 2020*	Summer 2020*	Fall 2020*	Spring 2021*	Summer 2021*	Fall 2021*
DSP		Y	Y	Y	Y	Y		Y
Not DSP	Y						Y	

**Enrollments that dropped with CW  
Lab Courses**

Course Id	Spring 2020*	Fall 2020*
ANTH 001L	5	1
BIO 012L	2	
BIO 016L	4	
GEOG 001L	8	14

## Enrollments that dropped with CW, Subject : MATH

Course Id	Spring 2020*	Summer 2020*	Fall 2020*
MATH 011	181	14	93
MATH 311	55	2	40
MATH 002	40	4	12
MATH 104	28	3	12
MATH 022	23		6
MATH 020	21	1	11
MATH 051	17	1	2
MATH 021	16	1	12
MATH 312	10		3
MATH 040	10		3
MATH 012	10		3
MATH 330	9		
MATH 030	6		3
MATH 112	5		8
MATH 023	3		1
MATH 031	2		
MATH 103	1		
Grand Total	437	26	209

## Enrollments dropped with CW Subject : ENGL

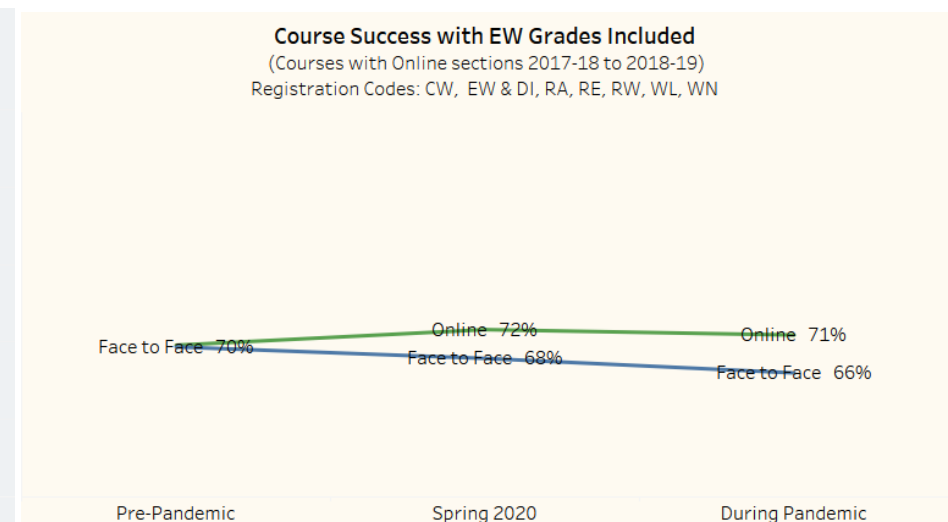
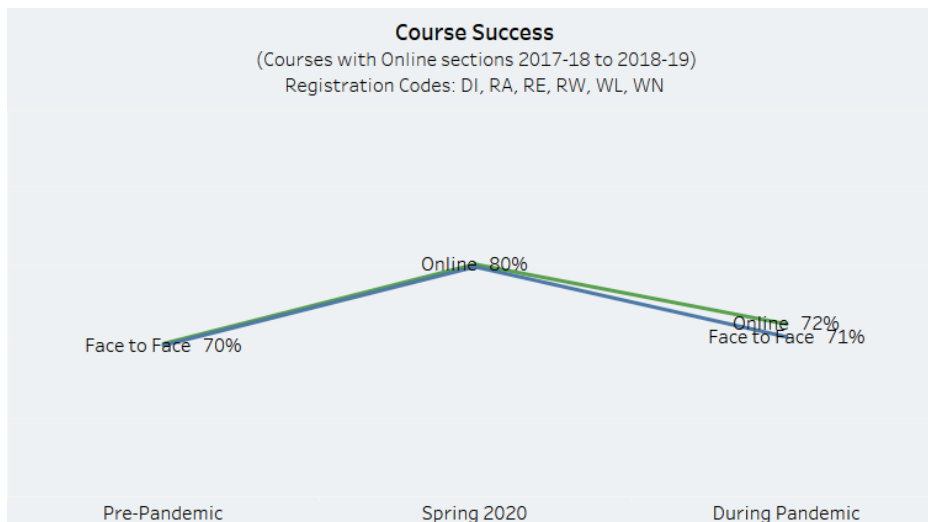
Course Id	Spring 2020*	Summer 2020*	Fall 2020*
ENGL 001	164	16	111
ENGL 002	64	9	20
ENGL 310D	57		
ENGL 004	27	2	11
ENGL 006	6		1
ENGL 040	4		
ENGL 024	4		
ENGL 360	2		
ENGL 058	1		
ENGL 007	1		
ENGL 400			1
ENGL 030			2
ENGL 018			2
Grand Total	330	27	148

## Course Success Rates In-person vs Online, Pre-Pandemic and During Pandemic

The following chart shows the breakdown between pandemic impacted and pre-pandemic terms used to compare rates for pre-pandemic and pandemic impacted terms.

	Pre-Pandemic Terms				During Pandemic Terms	
Academic Year	2016-17	2017-18	2018-19	2019-20	2020-21	2021-22
Summer Terms	Su'16	Su'17	Su'18	Su'19	Su'20	Su'21
Fall Terms	Fa'16	Fa'17	Fa'18	Fa'19	Fa'20	Fa'21
Spring Terms	Sp'17	Sp'18	Sp'19	Sp'20	Sp'21	

The following review of course success is only of courses that had online offerings in the 2016-17 to 2018-19 academic years. Any course that did not have an online section(s) before the 2018-19 academic year is not included in this review. Appendix 1 shows the list of courses that were excluded since they did not offer an online section from 2016-17 to 2018-19. Additionally, the registration codes used to calculate success have been extended to include CW and EW. These two codes are conventionally *excluded* in the California Community College system's calculation of course success since they are auto-assigning an EW grade (see Appendix 3). The EW grade is not counted as a course success but will be included in the denominator of the average course success calculation to satisfy the requestor's need. For this report, the registration codes included are CW, EW, DI, RA, RE, RW, WL, and WN. Course success is shown in both the conventional calculation and as was requested including the EW grades.

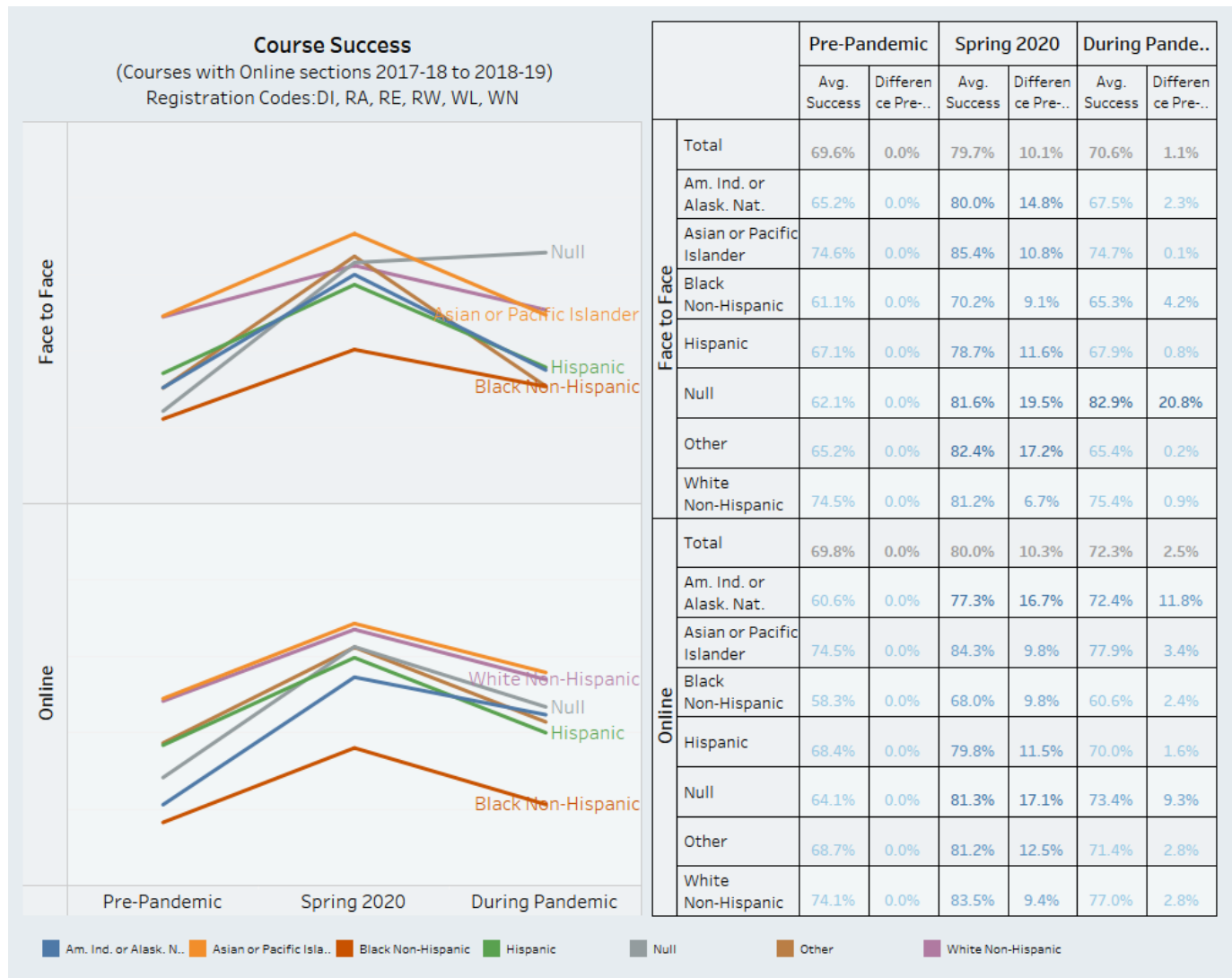


Course Success									Course Success with EW Grades included								
Courses with Online Sections 2017-18 to 2018-19. Registration Codes: DI, RA, RE, RW, WL, WN									Courses with Online Sections 2017-18 to 2018-19. Registration Codes: DI, RA, RE, RW, WL, WN, EW,CW								
Course Id Grand Total	Face to Face			SubTotal	Online			SubTotal	Course Id Grand Total	Face to Face			Total	Pre-Pandemic	Spring 2020	During Pandemic	Total
	Pre-Pandemic	Spring 2020	During Pandemic		Pre-Pandemic	Spring 2020	During Pandemic			Pre-Pandemic	Spring 2020	During Pandemic					
	70%	80%	71%	70%	70%	80%	72%	71%		70%	68%	66%	69%	70%	72%	71%	70%
ACCT 001	65%	66%	79%	67%	50%	53%	55%	52%	ACCT 001	65%	52%	76%	65%	50%	39%	53%	51%
ACCT 050	81%			81%	80%	83%	66%	74%	ACCT 050	81%			81%	80%	70%	66%	72%
ANTH 001	55%	86%	67%	60%	38%	80%	71%	52%	ANTH 001	55%	77%	65%	59%	38%	70%	71%	51%
ANTH 002	79%	91%	74%	79%	63%	70%	74%	67%	ANTH 002	79%	82%	70%	77%	63%	60%	74%	67%
ART 003B	67%			67%	78%		88%	81%	ART 003B	67%			67%	78%		88%	81%
ART 010	72%			72%	75%	89%	81%	78%	ART 010	72%			72%	75%	86%	80%	78%
ART 011					83%		79%	82%	ART 011					83%		79%	82%
ASTR 010	78%	84%	70%	78%	65%	84%	71%	69%	ASTR 010	78%	76%	67%	77%	65%	74%	70%	68%
ASTR 040	77%			77%	45%		68%	63%	ASTR 040	77%			77%	45%		67%	62%
BIO 012	74%	83%	65%	74%	75%	78%	79%	77%	BIO 012	74%	74%	63%	73%	75%	68%	78%	75%
BIO 016	65%	87%	79%	67%	63%	68%	73%	67%	BIO 016	65%	77%	74%	66%	62%	62%	72%	66%
BIO 016L	70%	91%	81%	76%	90%			90%	BIO 016L	69%	85%	80%	75%	90%			90%
BUS 005	63%	80%	69%	66%	63%	88%	64%	67%	BUS 005	63%	68%	60%	63%	69%	86%	63%	67%
BUS 018	75%	87%	85%	78%	68%		77%	74%	BUS 018	75%	80%	80%	76%	68%		74%	72%
BUS 092	65%		72%	66%	55%	75%	53%	55%	BUS 092	65%		66%	65%	55%	52%	52%	54%
CDFS 038	72%	76%		71%	65%	73%	65%	65%	CDFS 038	72%	67%	47%	69%	65%	62%	63%	64%
CDFS 040					43%	68%	51%	48%	CDFS 040					43%	59%	50%	47%
CDFS 062	81%		83%	81%	74%	93%	78%	81%	CDFS 062	81%		83%	81%	74%	89%	78%	80%
CDFS 070	81%	83%	71%	80%	83%	83%	78%	80%	CDFS 070	81%	67%	69%	78%	83%	76%	77%	79%
CDFS 080					94%		88%	90%	CDFS 080					94%		88%	90%
CHEM 010	76%	94%	68%	74%	80%	78%	76%	78%	CHEM 010	76%	80%	66%	73%	80%	62%	70%	73%
CINA 010	74%	76%	66%	74%	82%	86%	79%	81%	CINA 010	74%	66%	63%	73%	82%	83%	78%	80%
CINA 011	81%	79%	77%	81%	90%	93%	85%	87%	CINA 011	81%	72%	75%	80%	90%	91%	84%	87%
CIS 001	67%	70%	59%	65%	60%	70%	68%	63%	CIS 001	67%	64%	57%	65%	60%	54%	66%	61%
CIS 022	62%	83%	54%	62%	55%		50%	52%	CIS 022	61%	73%	50%	60%	55%		49%	52%
CIS 023	78%	91%	75%	79%	43%		56%	49%	CIS 023	78%	73%	72%	76%	43%		56%	49%
CIS 050	74%	89%	68%	75%	57%	90%	80%	66%	CIS 050	74%	71%	63%	74%	57%	87%	79%	66%
CIS 055	81%			81%	60%		93%	80%	CIS 055	81%			81%	60%		93%	80%
CIS 061	53%		69%	55%	51%	40%		50%	CIS 061	53%		52%	53%	51%	30%		49%
CIS 066	80%		57%	75%	67%	91%	78%	71%	CIS 066	80%		49%	73%	67%	78%	77%	70%
CIS 078	86%			86%	50%		83%	64%	CIS 078	86%			86%	50%		83%	64%
CJ 001	76%	86%	78%	78%	82%	90%	83%	83%	CJ 001	76%	80%	77%	77%	82%	88%	80%	82%
CJ 002	68%	90%	87%	73%	79%		74%	77%	CJ 002	67%	90%	85%	72%	79%		73%	77%
CJ 011	80%	86%	85%	82%	88%		88%	88%	CJ 011	80%	82%	83%	81%	88%		88%	88%
CJ 051	88%	91%		88%	86%	94%	86%	87%	CJ 051	88%	86%		87%	86%	91%	84%	86%
CJ 052	78%			78%	79%	93%	73%	79%	CJ 052	78%			78%	79%	89%	72%	78%
CJ 053	67%	95%	85%	74%	74%	82%	67%	74%	CJ 053	67%	95%	83%	73%	74%	76%	67%	73%
CJ 056	75%			75%	82%		85%	83%	CJ 056	75%			75%	82%		85%	83%
CJ 059	87%		81%	84%	76%		71%	75%	CJ 059	87%		79%	83%	76%		71%	75%
CJ 060	86%			86%	73%		95%	84%	CJ 060	86%			86%	73%		90%	82%
CJ 062					77%		78%	77%	CJ 062					77%		78%	77%
COUN 005	72%	69%	69%	71%	76%	81%	67%	72%	COUN 005	72%	60%	68%	71%	76%	76%	66%	71%
COUN 007	71%		90%	77%	65%	66%	70%	67%	COUN 007	71%		74%	72%	65%	64%	69%	66%
COUN 015	77%	90%		85%	62%		78%	68%	COUN 015	77%	85%		82%	62%		78%	68%
COUN 050	77%			77%	63%			63%	COUN 050	77%			77%	63%			63%
COUN 055					77%			77%	COUN 055					77%			77%
DRFT 045	72%		56%	70%	67%	100%	71%	71%	DRFT 045	72%		56%	70%	67%	81%	70%	69%
DRFT 058	47%	75%		55%	64%		43%	58%	DRFT 058	47%	69%		53%	64%		39%	57%
DRFT 145					85%	79%		81%	DRFT 145					85%	73%		79%
ECON 001	53%	74%	58%	55%	69%	76%	67%	69%	ECON 001	53%	54%	55%	53%	69%	70%	66%	68%
ECON 002	65%	76%	59%	64%	82%	94%	74%	80%	ECON 002	65%	66%	57%	63%	82%	94%	73%	80%
ENGL 001	68%	76%	69%	69%	65%	82%	64%	65%	ENGL 001	68%	60%	64%	67%	65%	73%	62%	64%
ENGL 002	80%	86%	71%	80%	68%	94%	72%	71%	ENGL 002	80%	74%	67%	78%	68%	87%	71%	70%
ENGL 004	81%	92%	82%	82%	63%	79%	75%	68%	ENGL 004	81%	81%	77%	80%	63%	70%	74%	67%
ENGL 021					62%		63%	62%	ENGL 021					62%		63%	62%
GEOG 001	73%	90%	67%	73%	72%	78%	86%	76%	GEOG 001	73%	80%	57%	67%	72%	75%	85%	76%
GEOL 001	74%	84%	89%	77%	76%	97%	87%	81%	GEOL 001	74%	78%	85%	76%	76%	91%	87%	81%
GEOL 005					89%			89%	GEOL 005					89%			89%
HED 002	84%			84%	74%	85%	78%	76%	HED 002	84%			84%	74%	78%	77%	75%
HED 003					63%	82%	66%	65%	HED 003					63%	74%	65%	64%
HIST 002	67%	79%		68%	75%	81%	68%	73%	HIST 002	67%	67%		67%	75%	79%	67%	73%
HIST 003	69%	72%		69%	77%	83%	74%	77%	HIST 003	69%	62%		68%	77%	79%	73%	77%
HIST 004	57%			57%	70%		64%	69%	HIST 004	57%			57%	70%		62%	68%
HIST 005					65%	93%		73%	HIST 005					65%	86%		72%
HIST 010					63%		75%	65%	HIST 010					63%		74%	65%
HIST 017	65%	75%	67%	66%	75%	83%	71%	73%	HIST 017	65%	65%	66%	65%	75%	69%	70%	73%
HIST 018	72%	69%	64%	71%	58%	81%	66%	64%	HIST 018	72%	60%	60%	70%	58%	67%	65%	62%
HIST 037	83%	97%	86%	85%	83%	88%	82%	82%	HIST 037	83%	90%	80%	84%	82%	81%	80%	81%



Course Success									Course Success with EW Grades included								
Courses with Online Sections 2017-18 to 2018-19. Registration Codes: DI, RA, RE, RW, WL, WN									Courses with Online Sections 2017-18 to 2018-19. Registration Codes: DI, RA, RE, RW, WL, WN, EW, CW								
Course Id	Face to Face				Online				Course Id	Face to Face				Online			
	Pre-Pandemic	Spring 2020	During Pandemic	SubTotal	Pre-Pandemic	Spring 2020	During Pandemic	SubTotal		Pre-Pandemic	Spring 2020	During Pandemic	Total	Pre-Pandemic	Spring 2020	During Pandemic	Total
Grand Total	70%	80%	71%	70%	70%	80%	72%	71%	Grand Total	70%	68%	66%	69%	70%	72%	71%	70%
KINE 005C			56%	56%	80%	80%	80%	80%	KINE 005C			54%	54%	80%	70%	80%	79%
KINE 020A	74%	71%	70%	73%	71%	80%	71%	72%	KINE 020A	74%	63%	67%	72%	71%	75%	69%	71%
KINE 020V					65%	61%	70%	65%	KINE 020V					64%	52%	68%	64%
KINE 020W					61%	55%	67%	60%	KINE 020W					61%	50%	67%	60%
KINE 057					62%	56%	77%	64%	KINE 057					62%	56%	76%	64%
LR 010	82%		84%	84%	70%	75%	71%	71%	LR 010	82%		61%	63%	70%	64%	69%	70%
MATH 011	61%	69%	66%	63%	52%		59%	59%	MATH 011	61%	53%	58%	60%	52%		58%	58%
MATH 104	49%	63%	60%	52%	41%	57%		42%	MATH 104	49%	55%	58%	51%	41%	50%		41%
MATH 330	44%	78%		45%	44%			44%	MATH 330	44%	56%		44%	44%			44%
MGMT 050	79%			79%	60%		74%	64%	MGMT 050	79%			79%	60%		72%	64%
MGMT 055	71%			71%	64%	74%	67%	67%	MGMT 055	71%			71%	64%	65%	65%	64%
MGMT 191	78%			78%	73%		71%	72%	MGMT 191	78%			78%	73%		69%	72%
MGMT 193					52%	79%	63%	57%	MGMT 193					52%	55%	59%	54%
MKT 171	62%			62%	56%		57%	57%	MKT 171	62%			62%	56%		55%	56%
MKT 174					37%		48%	42%	MKT 174					37%		47%	41%
MUSC 005	68%	63%	42%	65%	75%	97%	69%	74%	MUSC 005	68%	57%	38%	64%	75%	86%	68%	73%
MUSC 008	62%			62%	78%	87%	74%	77%	MUSC 008	62%			62%	78%	82%	72%	77%
MUSC 013	80%	81%	84%	80%	86%	95%	84%	86%	MUSC 013	80%	76%	81%	80%	86%	90%	82%	85%
NURS 052			89%	89%	95%	93%	95%	95%	NURS 052			89%	89%	95%	86%	94%	94%
NURS 064					99%			99%	NURS 064					99%			99%
NURS 111	76%	81%	64%	75%	90%		78%	84%	NURS 111	76%	68%	60%	74%	90%		78%	84%
NUTR 010	72%	76%	74%	73%	70%	79%	71%	71%	NUTR 010	72%	67%	71%	72%	70%	72%	70%	70%
NUTR 054					69%		88%	76%	NUTR 054					69%		88%	76%
OCED 070					67%	68%	67%	67%	OCED 070					67%	68%	66%	67%
OCED 071					55%	70%	50%	55%	OCED 071					55%	64%	47%	54%
OT 059					85%			85%	OT 059					85%			85%
OT 061					75%		56%	72%	OT 061					75%		56%	72%
OT 064					93%			93%	OT 064					93%			93%
OT 101					72%		69%	72%	OT 101					72%		69%	72%
OT 158					73%			73%	OT 158					73%			73%
OT 161					0%			0%	OT 161					0%			0%
OT 166					87%		69%	79%	OT 166					87%		64%	76%
PHYS 010					81%		87%	84%	PHYS 010					81%		87%	84%
PLSC 001	81%	79%	84%	81%	69%	75%	76%	72%	PLSC 001	81%	67%	79%	79%	69%	67%	75%	71%
PSYC 001	73%	79%	81%	74%	66%	81%	75%	74%	PSYC 001	73%	68%	75%	73%	66%	59%	75%	73%
PSYC 020	72%			72%	70%	73%	70%	70%	PSYC 020	72%			72%	70%	62%	69%	68%
RE 164	61%	55%	69%	62%	42%		67%	57%	RE 164	61%	48%	67%	61%	42%		67%	57%
RE 172	63%		65%	64%	45%	54%	64%	51%	RE 172	63%		63%	63%	45%	47%	63%	50%
SJS 002	74%		62%	67%	69%	75%	77%	73%	SJS 002	74%		56%	63%	69%	70%	75%	72%
SOC 001	72%	86%	78%	74%	66%	74%	71%	69%	SOC 001	72%	71%	75%	72%	66%	69%	70%	68%
SOC 002	82%	94%	65%	78%	76%	88%	75%	76%	SOC 002	82%	70%	57%	73%	76%	81%	74%	76%
SOC 040	86%	97%	76%	85%	72%		80%	76%	SOC 040	86%	92%	75%	84%	72%		80%	76%
SOCS 022	83%			83%	86%			86%	SOCS 022	83%			83%	86%			86%
SOCS 030	37%			37%	70%			70%	SOCS 030	37%			37%	70%			70%
THEA 006	81%	79%	78%		73%		84%	74%	THEA 006	81%	61%	78%	78%	73%		80%	74%
THEA 010	100%			100%	66%			66%	THEA 010	100%			100%	66%			66%
THEA 011					64%			64%	THEA 011					64%			64%

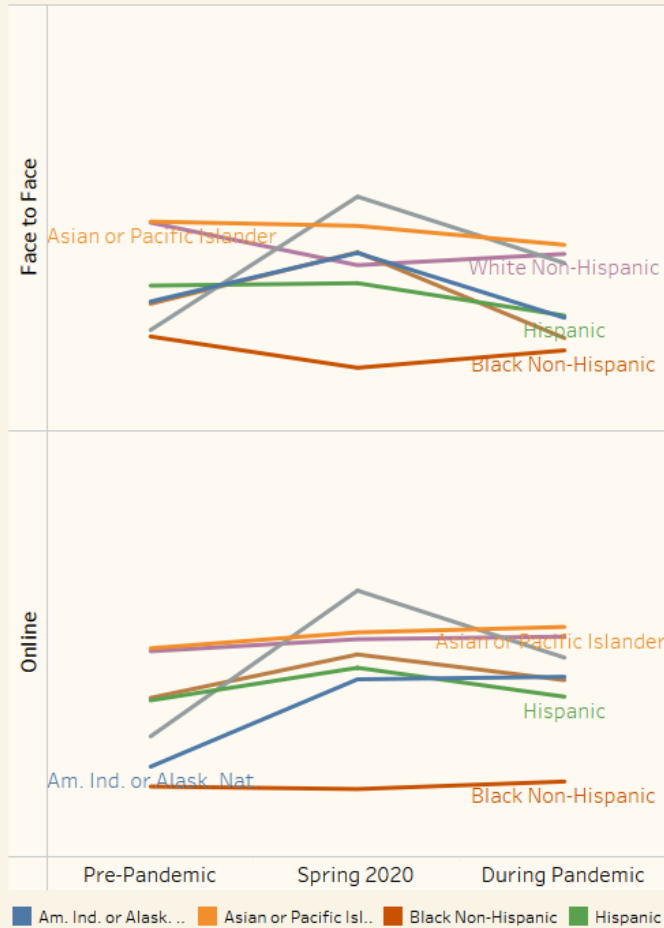
## Course Success by Ethnicity



## Course Success with EW Grades Included

(Courses with Online sections 2017-18 to 2018-19)

Registration Codes: CW, EW & DI, RA, RE, RW, WL, WN



		Pre-Pandemic		Spring 2020		During Pandemic	
		Avg. Success	Difference Pre-Pa..	Avg. Success	Difference Pre-Pa..	Avg. Success	Difference Pre-Pa..
Face to Face	Total	69.5%	0.0%	68.0%	-1.5%	66.2%	-3.4%
	Am. Ind. or Alask. Nat.	65.2%	0.0%	70.9%	5.7%	63.3%	-1.9%
	Asian or Pacific Islan..	74.6%	0.0%	74.1%	-0.5%	71.8%	-2.7%
	Black Non-Hispanic	61.1%	0.0%	57.4%	-3.7%	59.4%	-1.6%
	Hispanic	67.1%	0.0%	67.3%	0.3%	63.5%	-3.5%
	Null	61.8%	0.0%	77.5%	15.7%	69.7%	7.9%
	Other	64.9%	0.0%	71.0%	6.0%	60.9%	-4.0%
	White Non-Hispanic	74.4%	0.0%	69.5%	-5.0%	70.8%	-3.7%
Online	Total	69.8%	0.0%	71.8%	2.0%	71.1%	1.3%
	Am. Ind. or Alask. Nat.	60.6%	0.0%	70.8%	10.3%	71.1%	10.6%
	Asian or Pacific Islan..	74.5%	0.0%	76.3%	1.9%	77.0%	2.5%
	Black Non-Hispanic	58.2%	0.0%	57.9%	-0.3%	58.8%	0.6%
	Hispanic	68.4%	0.0%	72.2%	3.8%	68.8%	0.4%
	Null	64.1%	0.0%	81.3%	17.1%	73.4%	9.3%
	Other	68.7%	0.0%	73.8%	5.1%	70.7%	2.1%
	White Non-Hispanic	74.1%	0.0%	75.5%	1.4%	75.8%	1.7%

Legend: Am. Ind. or Alask. Nat. (Blue), Asian or Pacific Islander (Orange), Black Non-Hispanic (Red), Hispanic (Green), White Non-Hispanic (Purple), Null (Grey), Other (Brown)

## Course Success Gender

### Course Success

(Courses with Online sections 2017-18 to 2018-19)

Registration Codes: DI, RA, RE, RW, WL, WN

		Pre-Pandemic		Spring 2020		During Pandemic	
		Avg. Success	Difference from the Pre-Pandemic	Avg. Success	Difference from the Pre-Pandemic	Avg. Success	Difference from the Pre-Pandemic
Face to Face	Total	69.6%	0.0%	79.7%	10.1%	70.6%	1.1%
	Female	70.7%	0.0%	81.9%	11.2%	70.6%	-0.1%
	Male	68.0%	0.0%	76.8%	8.8%	70.8%	2.8%
	Null & Not Reported	72.8%	0.0%	80.2%	7.3%	68.0%	-4.8%
Online	Total	69.8%	0.0%	80.0%	10.3%	72.3%	2.5%
	Female	70.1%	0.0%	81.2%	11.1%	72.8%	2.7%
	Male	69.1%	0.0%	77.8%	8.7%	71.5%	2.4%
	Null & Not Reported	70.2%	0.0%	81.2%	10.9%	72.3%	2.0%

### Course Success with EW Grades Included

(Courses with Online sections 2017-18 to 2018-19)

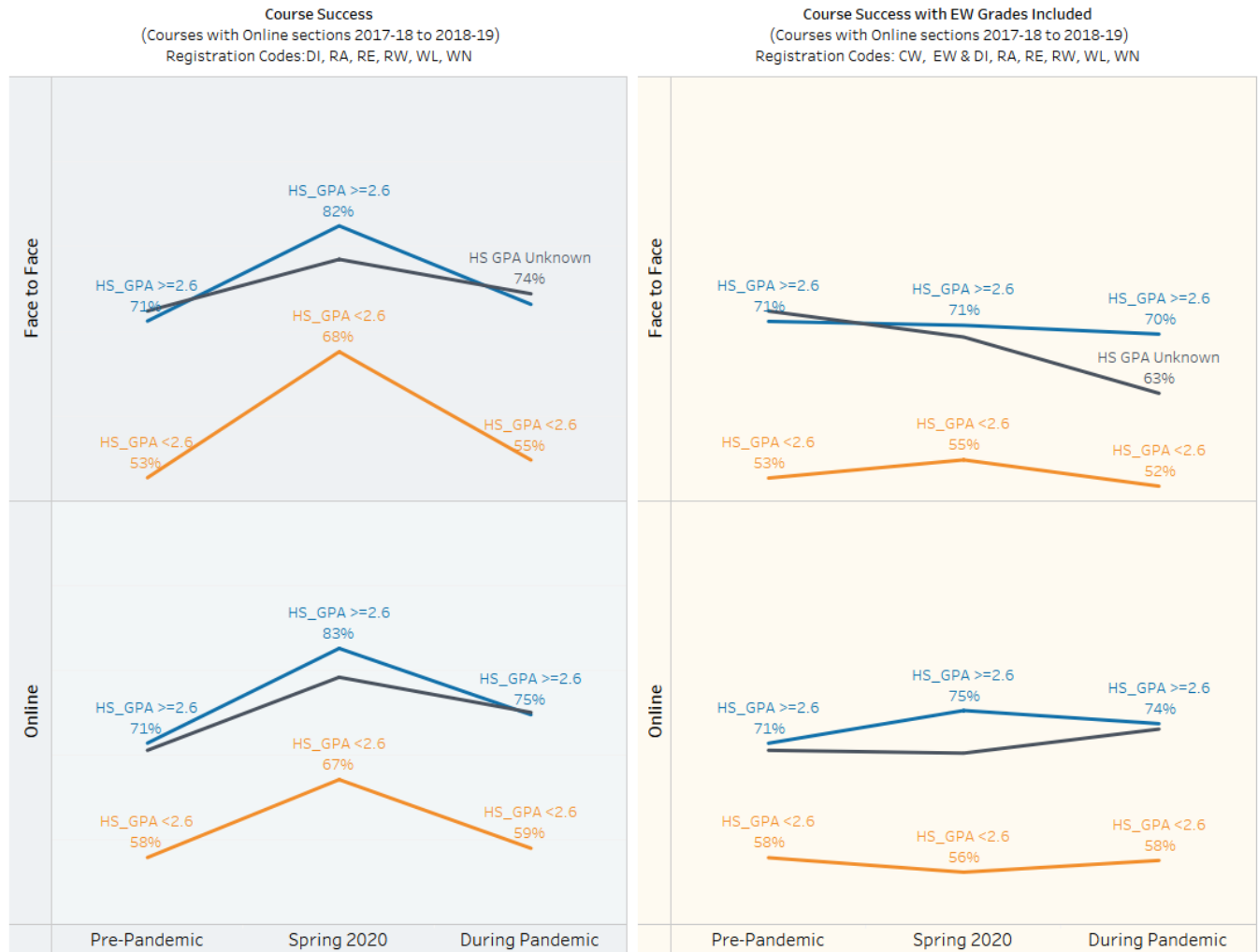
Registration Codes: CW, EW & DI, RA, RE, RW, WL, WN

		Pre-Pandemic		Spring 2020		During Pandemic	
		Avg. Success	Difference from the Pre-Pandemic	Avg. Success	Difference from the Pre-Pandemic	Avg. Success	Difference from the Pre-Pandemic
Face to Face	Total	69.5%	0.0%	68.0%	-1.5%	66.2%	-3.4%
	Female	70.7%	0.0%	70.5%	-0.1%	67.3%	-3.4%
	Male	68.0%	0.0%	64.9%	-3.1%	65.1%	-2.9%
	Null & Not Reported	72.7%	0.0%	67.8%	-4.9%	63.8%	-8.9%
Online	Total	69.8%	0.0%	71.8%	2.0%	71.1%	1.3%
	Female	70.1%	0.0%	72.6%	2.5%	71.5%	1.4%
	Male	69.1%	0.0%	70.0%	0.9%	70.4%	1.3%
	Null & Not Reported	70.2%	0.0%	75.8%	5.6%	70.9%	0.7%

Rates are highlighted yellow to green. Yellow highlighted rates being on the lower end to green on the higher end.

Course Success by Gender/Ethnicity					Course Success with EW Grades Included by Gender/Ethnicity				
Courses with Online Sections 2017-18 to 2018-19. Registration Codes: DI, RA, RE, RW, WL, WN					Courses with Online Sections 2017-18 to 2018-19. Registration Codes: DI, RA, RE, RW, WL, WN, <b>CW, EW</b>				
		Pre-Pandemic	Spring 2020	During Pandemic			Pre-Pandemic	Spring 2020	During Pandemic
Face to Face	Total	69%	80%	71%	Face to Face	Total	69%	68%	66%
	Female / Am. Ind. or Alask. Nat.	65%	73%	60%		Female / Am. Ind. or Alask. Nat.	65%	65%	57%
	Female / Asian or Pacific Islander	76%	89%	76%		Female / Asian or Pacific Islander	76%	78%	73%
	Female / Black Non-Hispanic	61%	70%	62%		Female / Black Non-Hispanic	61%	57%	59%
	Female / Hispanic	68%	82%	69%		Female / Hispanic	68%	70%	66%
	Female / Null	69%		68%		Female / Null	68%	88%	68%
	Female / Other	67%	82%	68%		Female / Other	66%	75%	65%
	Female / White Non-Hispanic	77%	84%	75%		Female / White Non-Hispanic	77%	73%	71%
	Male / Am. Ind. or Alask. Nat.	67%	95%	75%		Male / Am. Ind. or Alask. Nat.	67%	82%	69%
	Male / Asian or Pacific Islander	73%	81%	73%		Male / Asian or Pacific Islander	73%	69%	71%
	Male / Black Non-Hispanic	61%	70%	69%		Male / Black Non-Hispanic	61%	58%	61%
	Male / Hispanic	66%	74%	66%		Male / Hispanic	66%	63%	61%
	Male / Null	60%	78%	88%		Male / Null	60%	74%	67%
	Male / Other	61%	82%	60%		Male / Other	61%	65%	54%
	Male / White Non-Hispanic	71%	78%	77%		Male / White Non-Hispanic	71%	66%	71%
Online	Total	70%	80%	72%	Online	Total	70%	72%	71%
	Female / Am. Ind. or Alask. Nat.	63%	67%	66%		Female / Am. Ind. or Alask. Nat.	63%	62%	65%
	Female / Asian or Pacific Islander	75%	85%	79%		Female / Asian or Pacific Islander	75%	76%	78%
	Female / Black Non-Hispanic	58%	68%	62%		Female / Black Non-Hispanic	58%	57%	60%
	Female / Hispanic	69%	82%	71%		Female / Hispanic	69%	75%	70%
	Female / Null	68%		74%		Female / Null	68%	100%	74%
	Female / Other	71%	82%	71%		Female / Other	71%	74%	70%
	Female / White Non-Hispanic	75%	87%	78%		Female / White Non-Hispanic	75%	78%	77%
	Male / Am. Ind. or Alask. Nat.	55%	95%	81%		Male / Am. Ind. or Alask. Nat.	55%	86%	78%
	Male / Asian or Pacific Islander	74%	83%	77%		Male / Asian or Pacific Islander	74%	76%	76%
	Male / Black Non-Hispanic	58%	67%	58%		Male / Black Non-Hispanic	58%	60%	56%
	Male / Hispanic	68%	75%	68%		Male / Hispanic	68%	66%	67%
	Male / Null	58%		61%		Male / Null	58%	67%	61%
	Male / Other	66%	79%	72%		Male / Other	66%	71%	71%
	Male / White Non-Hispanic	72%	79%	75%		Male / White Non-Hispanic	72%	72%	74%

## Courses Success by High School GPA



Course Success Rate DSP



## Course Success Rate EOPS



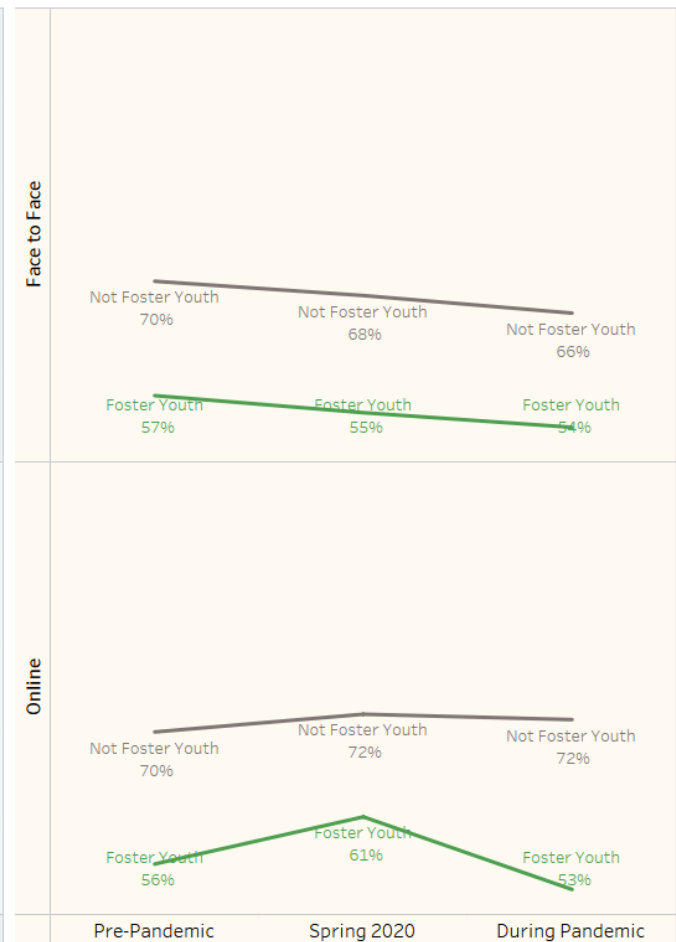


## Course Success Foster Youth

**Course Success**  
(Courses with Online sections 2017-18 to 2018-19)  
Registration Codes: DI, RA, RE, RW, WL, WN



**Course Success with EW Grades Included**  
(Courses with Online sections 2017-18 to 2018-19)  
Registration Codes: CW, EW & DI, RA, RE, RW, WL, WN



## Course Success Economic Status



## APPENDIX 1: List of courses not offering an online course from 2016-17 to 2018-19

ACCT 002	ART 033	ATEC 133	BIO 005	CDFS 065	COMM 015	ENGL 010	FREN 001	IT 151	KINE 009H	MT 122
ACCT 176	ART 034	ATEC 134	BIO 012L	CDFS 066	COMM 050	ENGL 018	FREN 002	IT 171	KINE 009P	MT 130
ACCT 177	ART 035A	ATEC 135	BIO 014	CDFS 071	COMM 060	ENGL 023	FREN 003	IT 172	KINE 020D	MT 132
ACCT 183	ART 036	ATEC 136	BIO 015	CDFS 072	COMM 075A	ENGL 024	FREN 004	IT 173	KINE 020E	MT 140
AERO 055	ART 038	ATEC 137	BIO 018	CDFS 073	COMM 075B	ENGL 030	FREN 011	IT 174	KINE 020H	MT 142
AERO 102	ART 042	ATEC 138	BIO 020	CDFS 075	COMM 080A	ENGL 031	FREN 012	IT 175	KINE 020J	MT 162
AERO 103	ART 042A	ATEC 139	BIO 025	CDFS 076	COMM 080B	ENGL 036	FREN 031	JOUR 001	KINE 020M	MT 163
AERO 105	ART 043	ATEC 140	BIO 047	CDFS 077	COSM 100	ENGL 040	FREN 032	JOUR 011	KINE 020N	MT 164
AERO 106	ART 045A	ATEC 148A	BIO 049	CDFS 078	COSM 101	ENGL 041	GEOG 001L	KINE 002A	KINE 020Q	MT 165
AERO 107	ART 045B	ATEC 148B	BIO 099	CDFS 081	COSM 102	ENGL 049	GEOG 002	KINE 002B	KINE 020R	MT 166
AERO 118	ART 045C	ATEC 150	BIO 101	CDFS 082	COSM 103A	ENGL 058	GEOG 004	KINE 002D	KINE 020S	MUSC 001
AERO 119	ART 046	ATEC 151	BIO 160	CHEM 001	COSM 103B	ENGL 059	GEOG 006	KINE 003A	KINE 020X	MUSC 002
ANTH 001L	ART 046C	ATHL 001	BIOT 001	CHEM 002	COSM 106	ENGL 062	GEOG 010	KINE 003D	KINE 020Y	MUSC 003
ANTH 006	ART 047	ATHL 001A	BIOT 003	CHEM 003	COSM 148	ENGL 310	GEOG 002	KINE 003E	KINE 055A	MUSC 004
ANTH 007	ART 049	ATHL 001B	BIOT 051	CHEM 004	COUN 023	ENGL 310A	GEOG 049	KINE 004A	KINE 055B	MUSC 007
ART 001	ART 058	ATHL 002A	BIOT 052	CHEM 011	COUN 062	ENGL 310D	HIST 028	KINE 004F	KINE 078	MUSC 011
ART 002	ART 064	ATHL 002B	BIOT 057	CHEM 012	COUN 064A	ENGL 359	HIST 029	KINE 004J	MATH 002	MUSC 014
ART 003A	ART 074	ATHL 002C	BIOT 060	CHEM 051	COUN 064B	ENGL 360	HIST 031	KINE 004K	MATH 004	MUSC 015
ART 004	ART 076A	ATHL 002D	BIOT 062	CHEM 160	DANC 004	ENGL 370	HORT 006	KINE 004N	MATH 012	MUSC 016
ART 005	ART 076B	ATHL 002E	BIOT 063	CINA 015	DANC 004A	ENGL 370L	HORT 030	KINE 004S	MATH 020	MUSC 017
ART 006	ARTD 044	ATHL 003	BIOT 065	CINA 016	DANC 004E	ENGL 400	HORT 031	KINE 004T	MATH 021	MUSC 018
ART 007	ARTD 144A	ATHL 003A	BIOT 160	CIS 015	DANC 004F	ENGR 001	HORT 050	KINE 005D	MATH 022	MUSC 019
ART 008	ARTD 144B	ATHL 003B	BIOT 401	CIS 020	DANC 004H	ENGR 003	HORT 055	KINE 005E	MATH 023	MUSC 020
ART 012	ARTD 144C	ATHL 004	BIOT 402	CIS 021	DANC 004J	ENGR 017	HORT 056	KINE 005G	MATH 026	MUSC 021
ART 014	ARTD 144D	ATHL 004A	BIOT 403	CIS 035	DANC 004K	ENGR 026	HORT 070	KINE 005J	MATH 030	MUSC 024
ART 015	ARTD 144E	ATHL 004B	BIOT 404	CIS 049	DANC 004M	ENGR 030	HORT 071	KINE 005K	MATH 031	MUSC 025
ART 015B	ASL 001	ATHL 010	BIOT 405	CIS 052	DANC 004N	ENGR 045	HORT 101	KINE 005M	MATH 040	MUSC 026
ART 016	ASL 002	ATHL 010A	BIOT 406	CIS 062	DANC 004S	ESL 074	HORT 301A	KINE 005N	MATH 049	MUSC 027
ART 017	ASL 003	ATHL 015	BIOT 407	CIS 070	DRFT 046	ESL 077	HORT 301B	KINE 005R	MATH 051	MUSC 028
ART 018	ASL 004	ATHL 015A	BIOT 408	CIS 073	DRFT 050	ESL 077L	HORT 301C	KINE 006A	MATH 055	MUSC 029
ART 019	ASL 005	ATHL 015B	BIOT 409	CIS 085	DRFT 055	ESL 094	HORT 301D	KINE 006C	MATH 103	MUSC 030
ART 019B	ASL 006	ATHL 015C	BIOT 410	CIS 087	DRFT 060	ESL 094A	HORT 301E	KINE 006E	MATH 112	MUSC 033
ART 020	ASL 046	ATHL 016A	BUS 097	CIS 089	DRFT 075	ESL 094B	HS 001	KINE 006F	MATH 160	MUSC 034
ART 021	ASL 047	ATHL 016B	BUS 100	CIS 090	DRFT 079	ESL 330	HS 051	KINE 007D	MATH 305	MUSC 035A
ART 022	ASL 052	ATHL 022	BUS 148A	CIS 091	DRFT 080	ESL 334	HS 053	KINE 007F	MATH 310	MUSC 035B
ART 023	ASL 053	ATHL 022A	BUS 181	CIS 093	DRFT 085	ESL 373	HS 054	KINE 007G	MATH 311	MUSC 036A
ART 024	ASL 054	ATHL 022B	BUS 182	CJ 057	DRFT 092	ESL 373L	HS 055	KINE 008A	MATH 312	MUSC 036B
ART 025	ASTR 020	ATHL 025	BUS 400	CJ 058	DRFT 151	FIRE 050	HUMN 001	KINE 008B	MATH 320	MUSC 038
ART 026	ASTR 030	ATHL 048	CDFS 050	CJ 064	DRFT 161	FIRE 051	HUMN 002	KINE 008D	MATH 330A	MUSC 039
ART 027	ASTR 045	ATHL 050	CDFS 052	COMM 001	EDUC 050	FIRE 053	IR 001	KINE 008E	MATH 330B	MUSC 040A
ART 028	ASTR 050	ATHL 050A	CDFS 053	COMM 002	EMT 112	FIRE 054	IT 050	KINE 009A	MATH 505	MUSC 040B
ART 029	ATEC 070	ATHL 050B	CDFS 054	COMM 006	EMT 128	FIRE 056	IT 101	KINE 009B	MKT 172	MUSC 040C
ART 030B	ATEC 130	BIO 002	CDFS 056	COMM 008	EMT 213	FIRE 101	IT 110	KINE 009C	MKT 173	MUSC 040D
ART 030C	ATEC 131	BIO 003	CDFS 063	COMM 010	ENGL 006	FIRE 140	IT 111	KINE 009E	MT 120	MUSC 041A
ART 031	ATEC 132	BIO 004	CDFS 064	COMM 012	ENGL 007	FLNG 101	IT 140	KINE 009F	MT 121	MUSC 041B

MUSC 045	NURS 065	NURS 219	PHIL 003	PHOT 153	PLSC 049	SOC 045	SPMD 055B	THEA 024D	TV 055	WELD 101
MUSC 051	NURS 071A	OCED 090	PHIL 004	PHOT 154	PLSC 050	SOC 049	SPMD 056A	THEA 027A	TV 056	WELD 102
MUSC 052	NURS 071B	OCED 091	PHIL 006	PHOT 156	PSYC 002	SOC 075	SPMD 056B	THEA 027B	TV 060	WELD 103
MUSC 053	NURS 071S	OT 054A	PHIL 400	PHOT 163	PSYC 004	SOCS 053A	SPMD 071	THEA 032A	TV 061	WELD 120
MUSC 061	NURS 072A	OT 054B	PHOT 029	PHSC 012	PSYC 005	SPAN 001	THEA 001	THEA 035	WATR 100	WELD 121
NURS 050A	NURS 072B	OT 055A	PHOT 030	PHYS 002	PSYC 006	SPAN 002	THEA 002	THEA 036	WATR 101	WELD 122
NURS 050B	NURS 072S	OT 055B	PHOT 031	PHYS 004	PSYC 007	SPAN 003	THEA 003	THEA 040	WATR 103	WELD 123
NURS 054	NURS 073	OT 056	PHOT 032	PHYS 006	PSYC 012	SPAN 004	THEA 005	THEA 047	WATR 104	WELD 124
NURS 055	NURS 073A	OT 060	PHOT 035	PHYS 007	PSYC 030	SPAN 011	THEA 008	THEA 047A	WATR 105	WELD 125
NURS 058A	NURS 073B	OT 063	PHOT 040	PHYS 008	PSYC 034	SPAN 031	THEA 009	THEA 047B	WATR 106	WELD 130
NURS 058B	NURS 073S	OT 100	PHOT 045	PLSC 002	RE 173	SPAN 032	THEA 013	THEA 047C	WATR 107	WELD 131
NURS 058C	NURS 074A	OT 151	PHOT 051	PLSC 003	RE 174	SPAN 033	THEA 020	THEA 047D	WATR 108	WELD 132
NURS 058D	NURS 074B	OT 162	PHOT 070	PLSC 004	RE 175	SPAN 034	THEA 024	THEA 050	WATR 120	WELD 136
NURS 060	NURS 074S	OT 163	PHOT 071	PLSC 005	SJS 001	SPAN 049	THEA 024A	TUTR 050	WATR 121	WELD 137
NURS 061	NURS 103	OT 164	PHOT 151	PLSC 006	SJS 030	SPMD 054	THEA 024B	TUTR 500	WATR 126	WELD 145
NURS 063	NURS 104	PHIL 001	PHOT 152	PLSC 016	SOC 023	SPMD 055A	THEA 024C	TV 050	WELD 100	WELD 500

## Appendix 2:

Ethnicity Category	Over Represented in CW/EW Population															
	Summer 2019	Summer 2019	Fall 2019	Fall 2019	Spring 2020*	Spring 2020*	Summer 2020*	Summer 2020*	Fall 2020*	Fall 2020*	Spring 2021*	Spring 2021*	Summer 2021*	Summer 2021*	Fall 2021*	Fall 2021*
Hispanic	0.00		1.18 Y		0.99		1.17 Y		1.03 Y		0.90		0.61		0.93	
White Non-Hispanic	2.35 Y		1.05 Y		1.00		0.77		0.81		1.25 Y		1.02 Y		0.79	
Asian or Pacific Islander	2.04 Y		0.58		0.94		0.59		0.78		0.70		0.38		1.02 Y	
Black Non-Hispanic	0.00		0.83		1.15 Y		1.51 Y		1.53 Y		1.35 Y		2.93 Y		1.53 Y	
Other	0.00		1.66 Y		0.92		1.30 Y		0.89		0.00		0.00		0.00	
Am. Indian or Alaskan Native	0.00		0.00		0.87		1.98 Y		1.28 Y		1.30 Y		0.00		0.70	
Null	0.00		4.81 Y		0.65		1.30 Y		2.05 Y		2.93 Y		0.00		3.63 Y	

Gender (group)	Over Represented in CW/EW Population															
	Summer 2019	Summer 2019	Fall 2019	Fall 2019	Spring 2020*	Spring 2020*	Summer 2020*	Summer 2020*	Fall 2020*	Fall 2020*	Spring 2021*	Spring 2021*	Summer 2021*	Summer 2021*	Fall 2021*	Fall 2021*
Female	0.82		1.36	Y	0.92		0.83		0.81		0.83		1.10	Y	0.91	
Male	1.35	Y	0.37		1.10	Y	1.28	Y	1.29	Y	1.17	Y	0.76		1.10	Y
Null & Not Reported	0.00		3.42	Y	1.17	Y	1.39	Y	0.98		2.70	Y	2.87	Y	1.48	Y

AGE (group)	Over Represented in CW/EW Population															
	Summer 2019	Summer 2019	Fall 2019	Fall 2019	Spring 2020*	Spring 2020*	Summer 2020*	Summer 2020*	Fall 2020*	Fall 2020*	Spring 2021*	Spring 2021*	Summer 2021*	Summer 2021*	Fall 2021*	Fall 2021*
Null			0.00						0							
17 or younger	0		0.41		0.43		0.76		0.72		0.494887526		0.64717879		2.155075939	Y
18-24	2.05	Y	1.19	Y	1.18	Y	0.81		0.95		0.817384525		0.40731238		0.558365759	
25-30	0		0.71		0.86		1.26	Y	1.05	Y	0.613046232		1.853990915	Y	0.495373665	
31-40	0		0.46		0.86		1.18	Y	0.99		1.487317448	Y	1.70192995	Y	1.376880443	Y
41 or older	0		1.74	Y	0.97		1.72	Y	1.57	Y	2.390316206	Y	2.08652793	Y	2.127659574	Y

EOPS Label	Over Represented in CW/EW Population															
	Summer 2019	Summer 2019	Fall 2019	Fall 2019	Spring 2020*	Spring 2020*	Summer 2020*	Summer 2020*	Fall 2020*	Fall 2020*	Spring 2021*	Spring 2021*	Summer 2021*	Summer 2021*	Fall 2021*	Fall 2021*
EOPS	0.00		1.23	Y	1.70	Y			2.75	Y	6.00	Y			3.78	Y
Not EOPS	1.02	Y	1.00		0.98		1.00		0.97		0.89		1.00		0.95	

DSP Label	Over Represented in CW/EW Population															
	Summer 2019	Summer 2019	Fall 2019	Fall 2019	Spring 2020*	Spring 2020*	Summer 2020*	Summer 2020*	Fall 2020*	Fall 2020*	Spring 2021*	Spring 2021*	Summer 2021*	Summer 2021*	Fall 2021*	Fall 2021*
DSP	0.00		1.99	Y	1.21	Y	1.40	Y	1.64	Y	7.75	Y	0.00		2.49	Y
Not DSP	1.01	Y	0.96		0.99		1.00		0.99		0.84		1.01	Y	0.96	

## Appendix 3: CCCO Success Rate Calculation

SM 338SW All Student Credit Enrollments with **Grades** Allowable for Course Success Rate Calculation in the Selected Year

Description	Number of students who took one or more credit courses with <b>grades</b> allowable for enrollment count for Course Success Rate calculation per Datamart in the selected year
Student Type	All
Display	Snapshot
Data Source(s)	Chancellor's Office Management Information System
Data Element(s)	CB04 Course-Credit-Status GI03 Term-Identifier SX04 Enrollment: <b>Grade</b>
Calculations	<p>Students who met the following criteria:</p> <ul style="list-style-type: none"> <li>Count of enrollments</li> <li>Enrollment defined as a unique combinations of student, locale, CB00, XB00, GI03</li> <li>AND with allowable <b>grades</b> for enrollment to be included in denominator for course success rate as displayed in Datamart</li> <li>WHERE SX04 NOT IN (EW, MW, RD, SP, UD, UG)</li> <li>AND for credit courses only</li> <li>AND CB04 IN (C, D)</li> <li>AND in the selected year</li> <li>WHERE GI03 is within the selected year</li> <li>AND at the selected college</li> </ul>
Denominator	n/a
Value Type	Unduplicated count of enrollments
Notes	<ul style="list-style-type: none"> <li>Metric will not be displayed on the dashboard but will be used as a denominator for SM 408SW Course Success Rate for All Students</li> <li>The <b>grades</b> to be included in the calculation of the denominator was verified by MIS on 10.03.19</li> <li>CO decision made on 2/8/21 to flag unique courses with: derky-locale-CB00-XB00-GI03</li> </ul>