

**SOLANO COMMUNITY COLLEGE DISTRICT  
GOVERNING BOARD AGENDA ITEM**

**TO:** Members of the Governing Board

**SUBJECT:** DISTRICT STANDARDS -WAYFINDING SIGNAGE  
STANDARDS

**REQUESTED ACTION:**

☐ Information OR ☒ Approval  
☐ Consent OR ☒ Non-Consent

**SUMMARY:**

The Board is requested to approve and adopt the attached Wayfinding Signage Standards. Wayfinding signage standards were not previously addressed in the 2013 Facilities Master Plan, Book 2: District Standards. A District signage committee previously worked with the signage consultant to develop a Final Signage Design Concept, dated June 6, 2014 for exterior building name signage and campus wayfinding signage. However, this document was not brought before the Board for approval as

*CONTINUED ON THE NEXT PAGE*

**STUDENT SUCCESS IMPACT:**

- ☒ Help our students achieve their educational, professional and personal goals  
☐ Basic skills education  
☐ Workforce development and training  
☐ Transfer-level education  
☒ Other: Establish design standards for campus wayfinding signage, facilitating ease of access to classrooms and student services

<i>Ed. Code:</i>	<i>Board Policy:</i>	<i>Estimated Fiscal Impact: N/A</i>
------------------	----------------------	-------------------------------------

**SUPERINTENDENT'S RECOMMENDATION:**

☐ APPROVAL ☐ DISAPPROVAL  
☐ NOT REQUIRED ☐ TABLE

Lucky Lofton  
Executive Bonds Manager

**PRESENTER'S NAME**

4000 Suisun Valley Road  
Fairfield, CA 94534

**ADDRESS**

(707) 863-7855

**TELEPHONE NUMBER**

Yulian Ligioso  
Vice President, Finance & Administration

**VICE PRESIDENT APPROVAL**

March 4, 2017

**DATE SUBMITTED TO  
SUPERINTENDENT-PRESIDENT**

Celia Esposito-Noy, Ed.D.  
Superintendent-President

March 4, 2017

**DATE APPROVED BY  
SUPERINTENDENT-PRESIDENT**

**SOLANO COMMUNITY COLLEGE DISTRICT  
GOVERNING BOARD AGENDA ITEM**

**TO: Members of the Governing Board**

**SUBJECT: DISTRICT STANDARDS - WAYFINDING SIGNAGE  
STANDARDS**

---

**SUMMARY:**

*CONTINUED FROM THE PREVIOUS PAGE*

District Standards at the time.

On December 21, 2016, the Board approved a contract amendment with signage consultant Kate Keating & Associates, to among other tasks, update and finalize the Wayfinding Signage Standards. The consultant worked with staff and the Bond Steering Committee to update the Wayfinding Signage Standards, in particular to ensure the site monument sign design can incorporate naming for stand-alone sites, such as the site of the new Automotive Technology Building.

The Bond Team is recommending establishment of these Wayfinding Signage Standards to ensure consistency in aesthetics, and wayfinding on the College's campuses.

The Governing Board is asked to approve and adopt the proposed Wayfinding Signage Standards.

The Wayfinding Signage Standards document is available online at:  
<http://www.solano.edu/measureq/planning.php>



---

# WAYFINDING SIGNAGE STANDARDS

March 15, 2017



**Kate Keating Associates Inc.**  
Environmental Graphic  
Design Consultants

1045 Sansome Street, Suite 202  
San Francisco, CA  
Tel: 415.773.1000  
Fax: 415.773.1008





# CAMPUSES





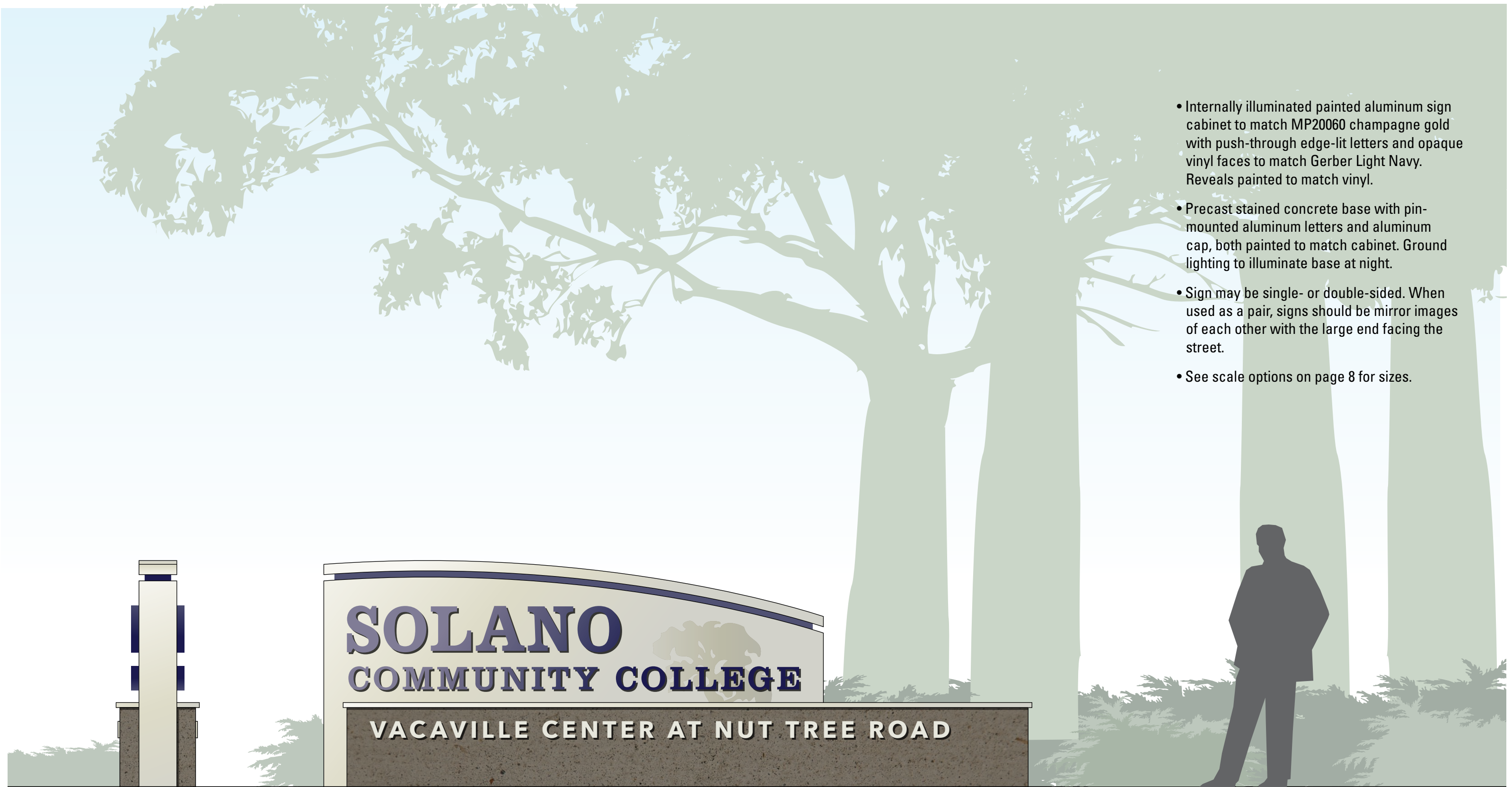
---

SIGN FAMILY



Scale: 1/2" = 1'-0"

# SIGN FAMILY



- Internally illuminated painted aluminum sign cabinet to match MP20060 champagne gold with push-through edge-lit letters and opaque vinyl faces to match Gerber Light Navy. Reveals painted to match vinyl.
- Precast stained concrete base with pin-mounted aluminum letters and aluminum cap, both painted to match cabinet. Ground lighting to illuminate base at night.
- Sign may be single- or double-sided. When used as a pair, signs should be mirror images of each other with the large end facing the street.
- See scale options on page 8 for sizes.

Scale: 1/2" = 1'-0"

## PRIMARY MONUMENT

PAGE 5







- Internally illuminated painted aluminum sign cabinet to match MP20060 champagne gold with push-through edge-lit letters and opaque vinyl faces to match Gerber Light Navy. Reveals painted to match vinyl.
- Cast stained concrete base. Ground lighting to illuminate base at night.
- Sign may be single- or double-sided. When used as a pair, signs should be mirror images of each other with the large end facing the street.
- See scale options on page 8 for sizes.

Scale: 1/2" = 1'-0"

## SECONDARY MONUMENT

PAGE 6





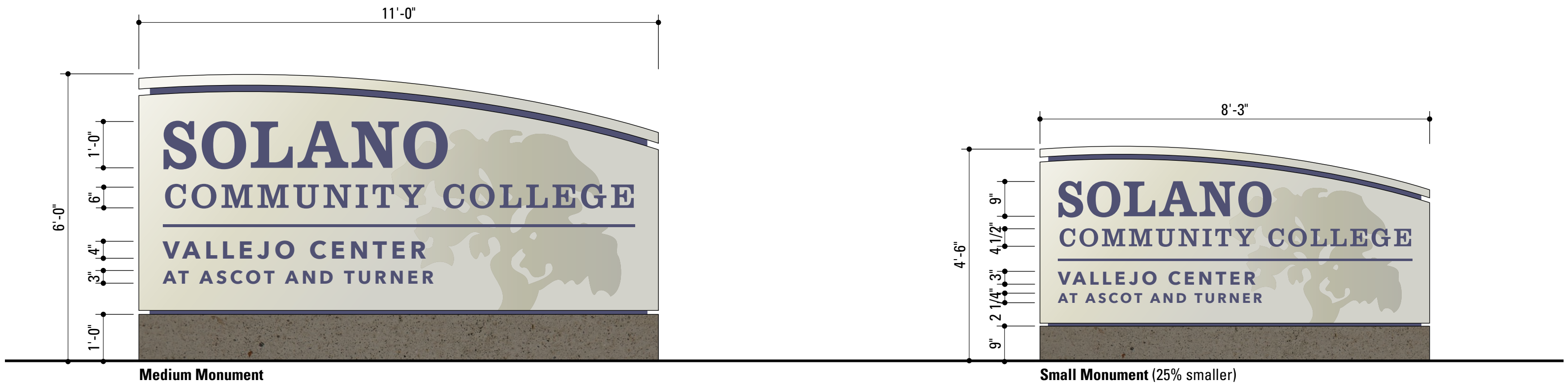
- Internally illuminated painted aluminum sign cabinet to match MP20060 champagne gold with push-through edge-lit letters and opaque vinyl faces to match Gerber Light Navy. Reveals painted to match vinyl.
- Cabinet to be fitted over existing concrete wall.
- Sign may be single- or double-sided. When used as a pair, signs should be mirror images of each other with the large end facing the street.
- See scale options on page 8 for sizes.

Scale: 1/2" = 1'-0"

## SECONDARY MONUMENT WITH EXISTING CONCRETE WALL

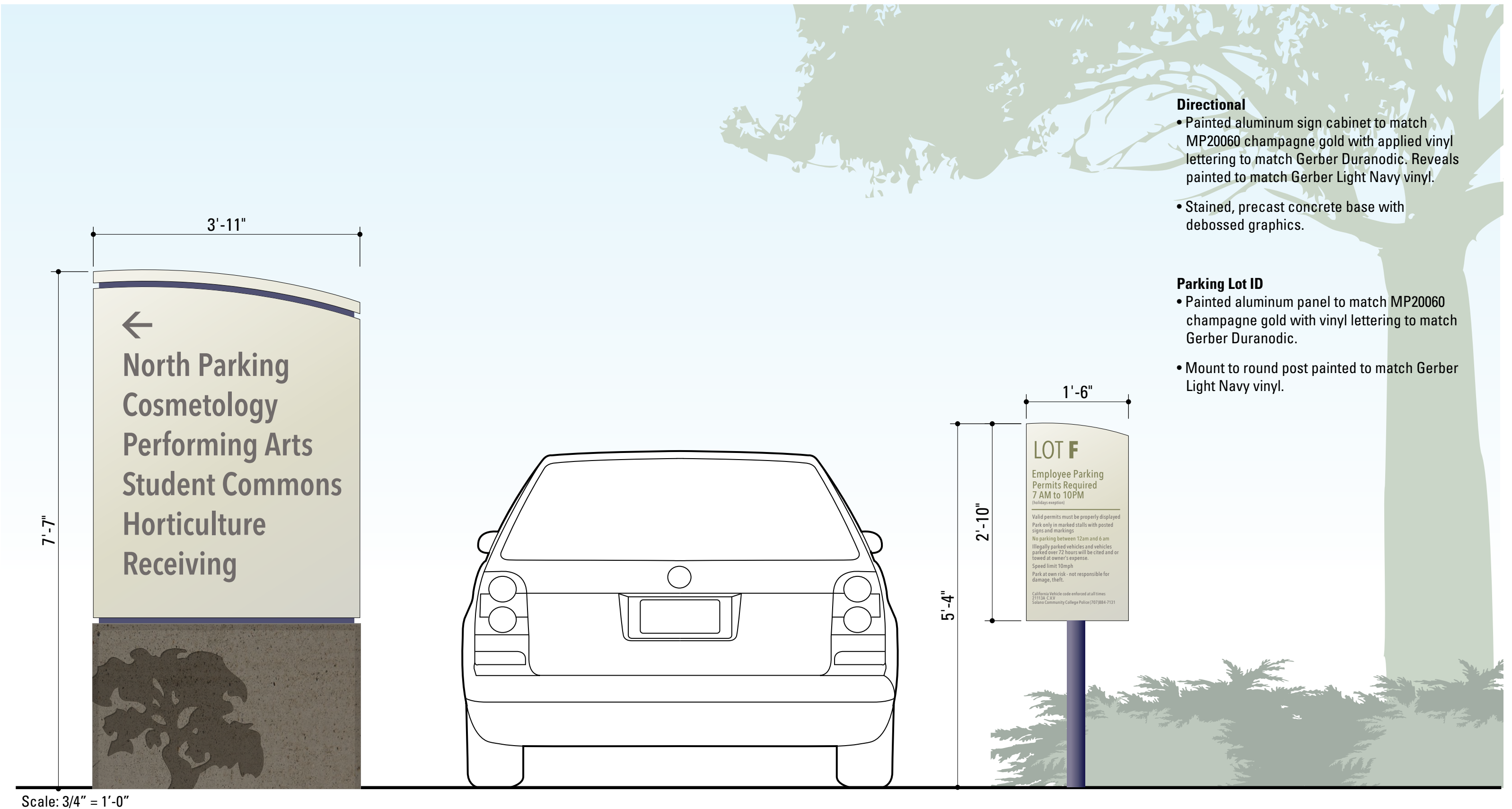
PAGE 7





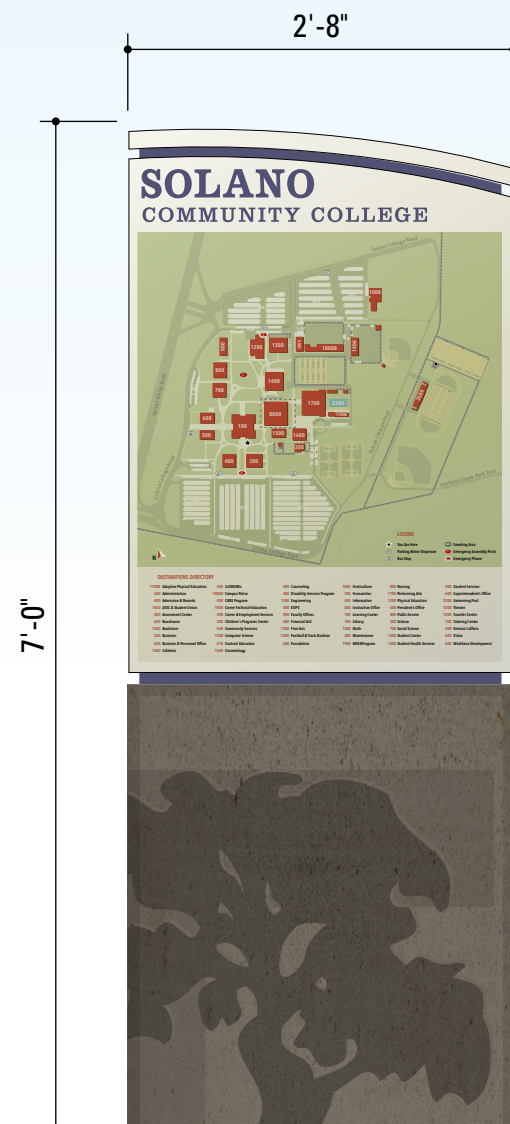
# MONUMENT SCALE OPTIONS



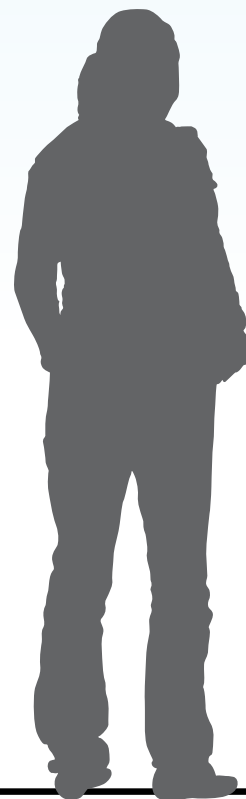


# VEHICULAR WAYFINDING: Directional and Parking Lot ID

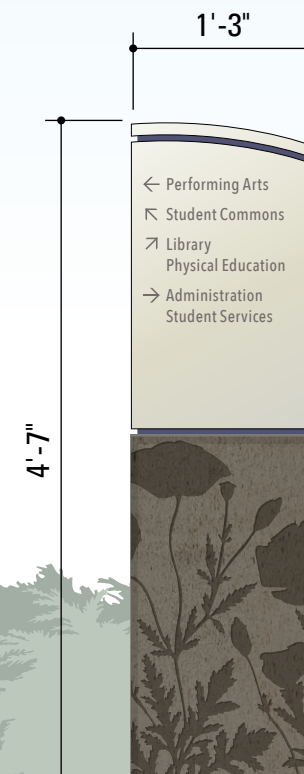




Perimeter Map



Interior Map



Directional

- Painted aluminum sign cabinet to match MP20060 champagne gold with applied vinyl lettering to match Gerber Duranodic and Light Navy. Reveals painted to match Gerber Light Navy vinyl.
- Map and directory to be printed on vinyl and wrapped around a 1/16" aluminum panel with eased edges. Mechanically fasten to sign cabinet and secure via side access panels.
- Stained, precast concrete base with debossed graphics.

Scale: 3/4" = 1'-0"

# PEDESTRIAN WAYFINDING: Campus Map and Directional



---

LIGHTING





# PUSH-THROUGH EDGE-LIT LETTERS



---

# VALLEJO & VACAVILLE MONUMENTS

**SOLANO**  
**COMMUNITY COLLEGE**

**VALLEJO CENTER**

**545**



Scale: 1/2" = 1'-0"

## VALLEJO

PAGE 14



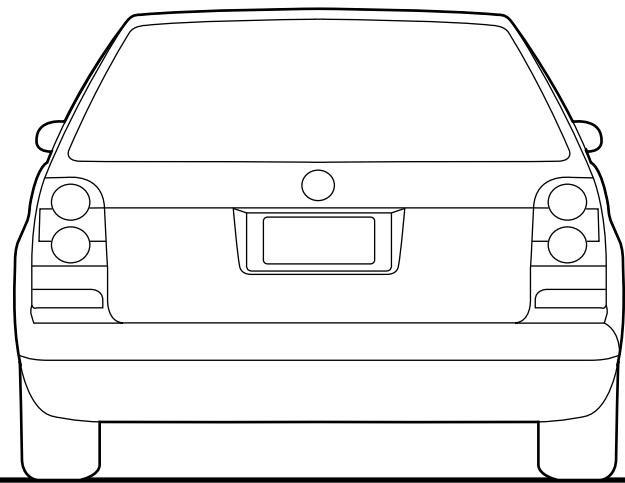




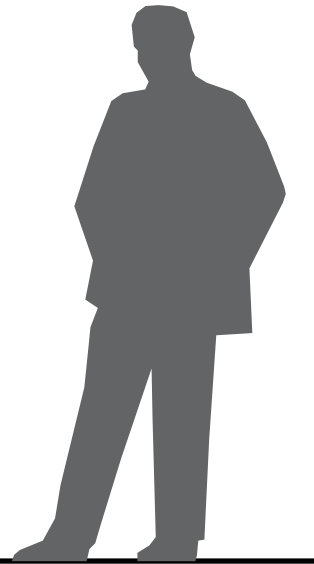
# VALLEJO







Scale: 1/2" = 1'-0"



# VACAVILLE







# VACAVILLE







# VACAVILLE GATEWAY SIGN







# VACAVILLE GATEWAY SIGN



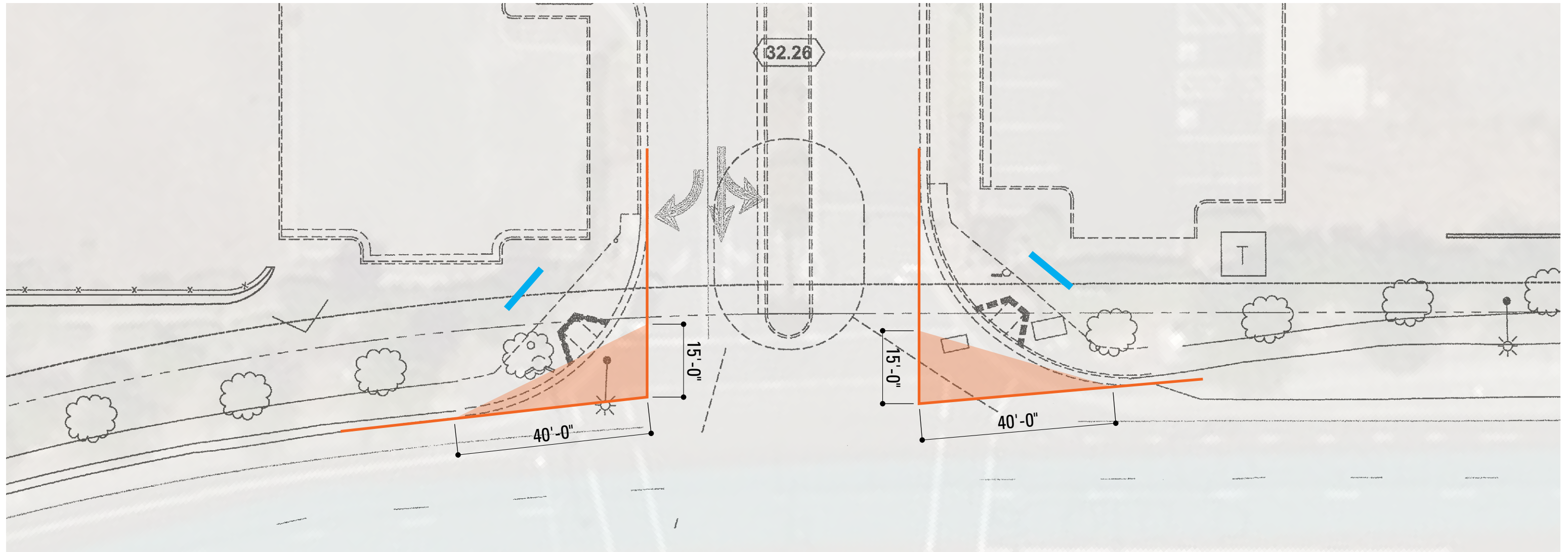




# VACAVILLE GATEWAY SIGN

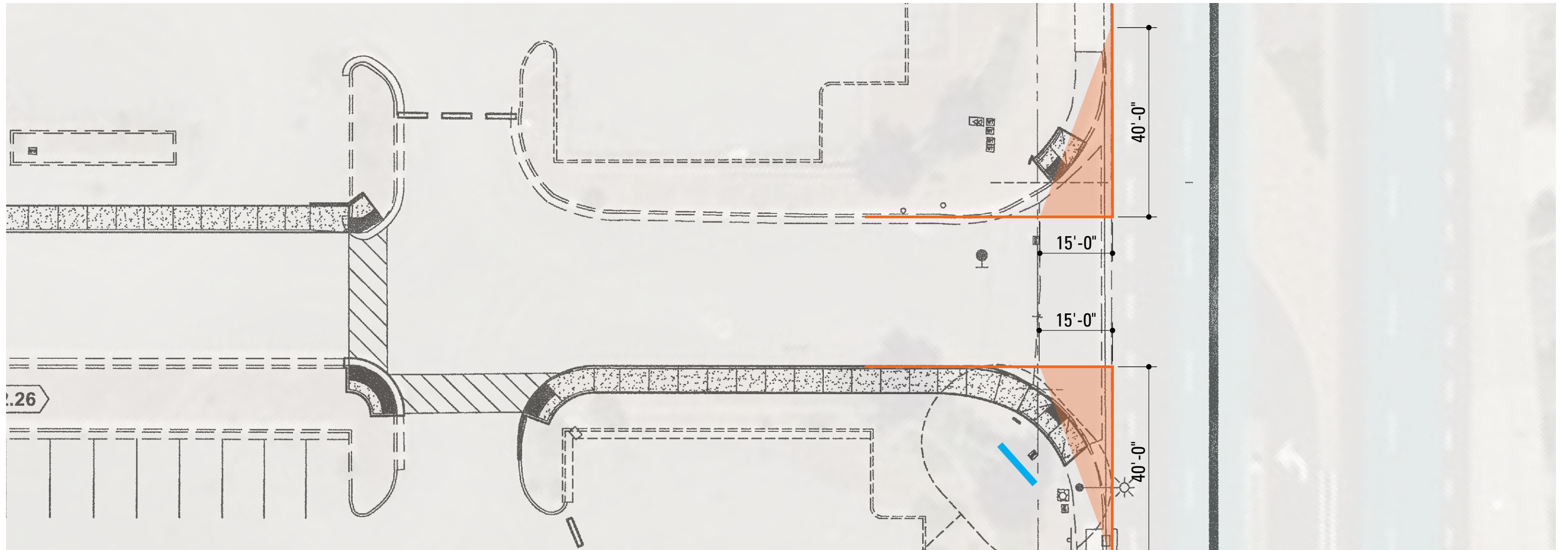






# VALLEJO CENTER, TURNER PARKWAY ENTRANCE





# VALLEJO CENTER, NORTH ASCOT PARKWAY ENTRANCE

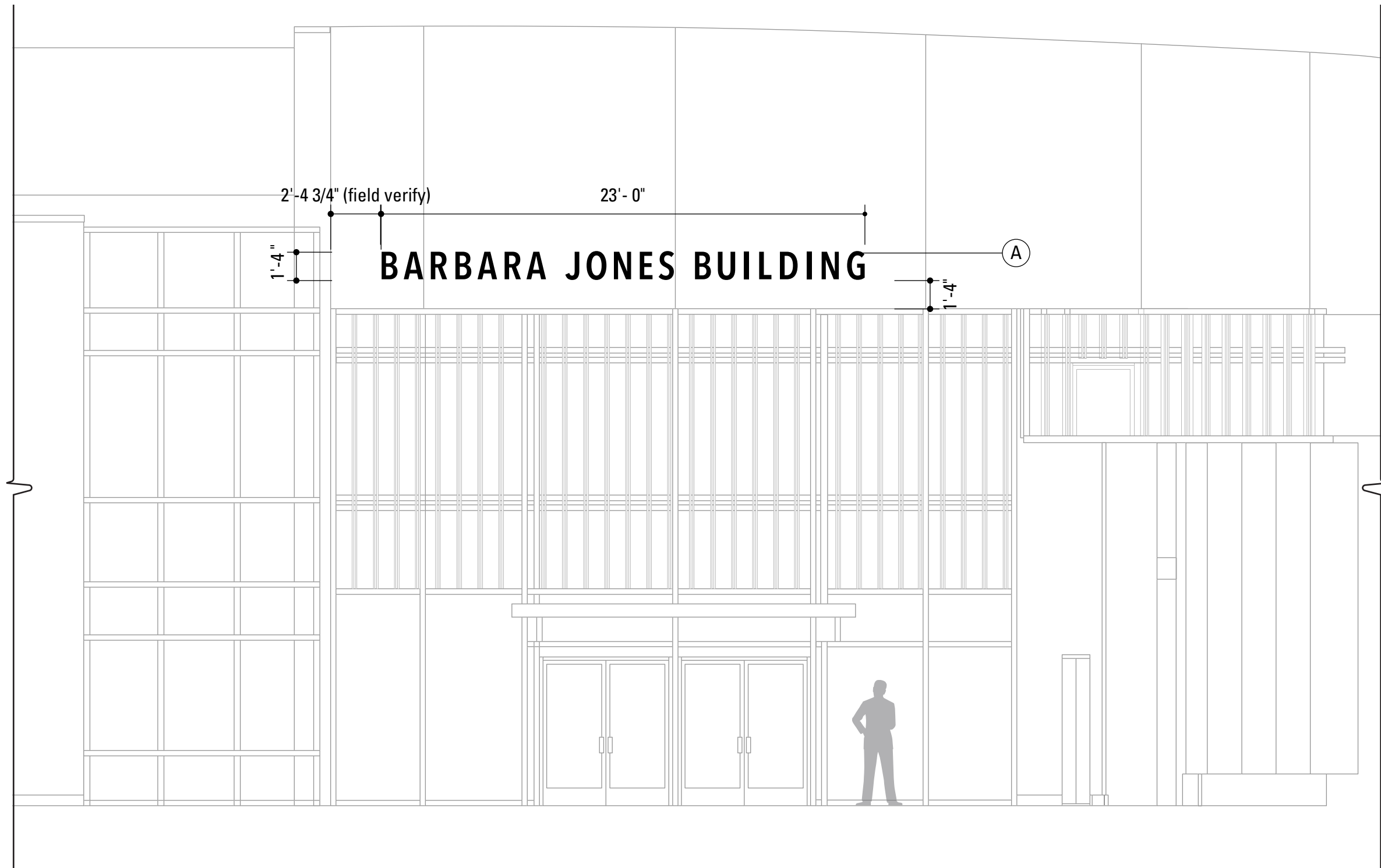
---

BUILDING LETTERING



## BARBARA JONES BUILDING, PRIMARY LETTERS





1 Vacaville Building ID.3: Front View  
Scale: 3/16" = 1'-0"

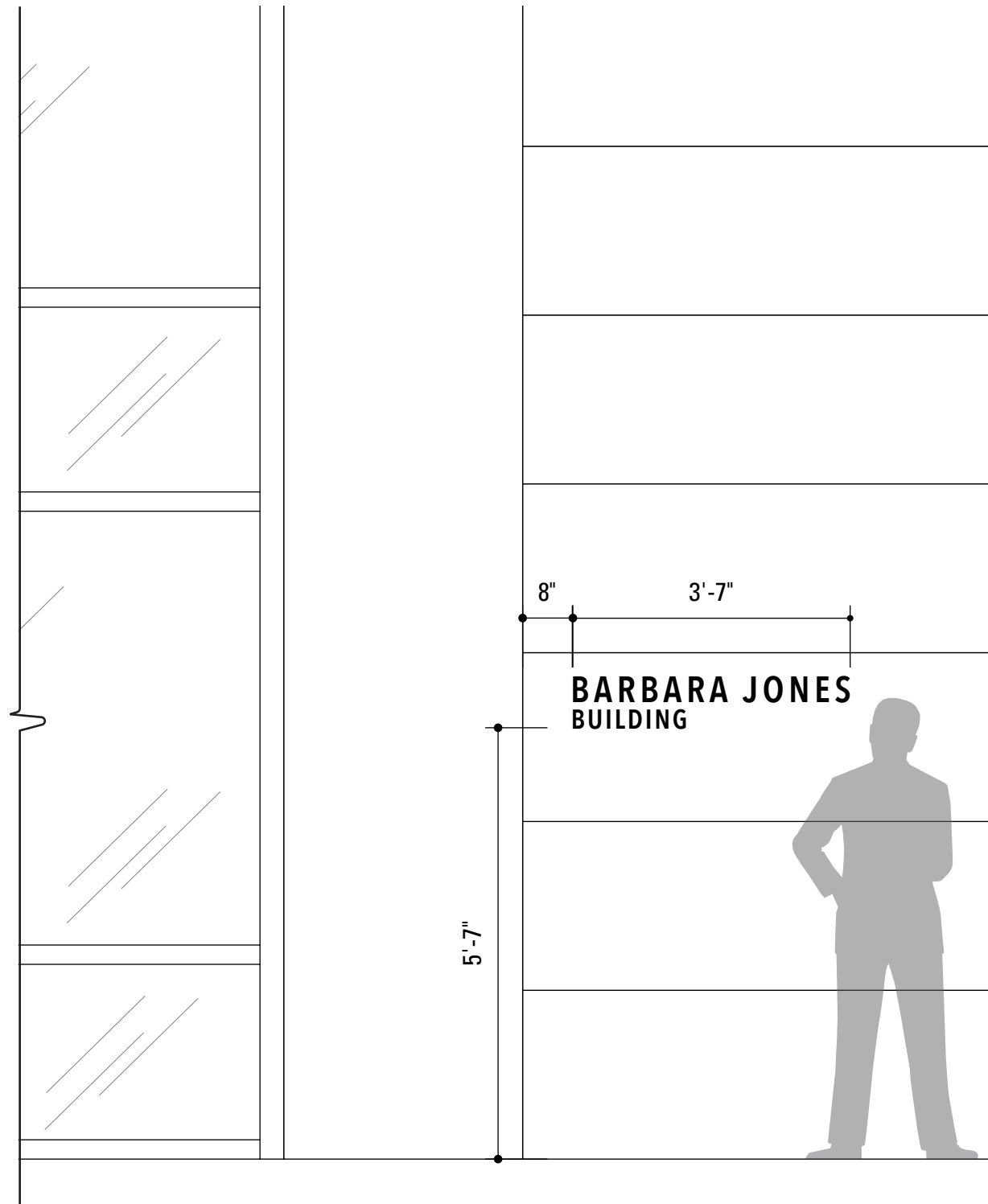
# BARBARA JONES BUILDING, PRIMARY LETTERS





# BARBARA JONES BUILDING, SECONDARY LETTERS





**1** Vacaville Building ID.2: Front View  
Scale: 1/2"=1'-0"



**2** Vacaville Building ID.2: Detail View  
Scale: 1 1/2"=1'-0"

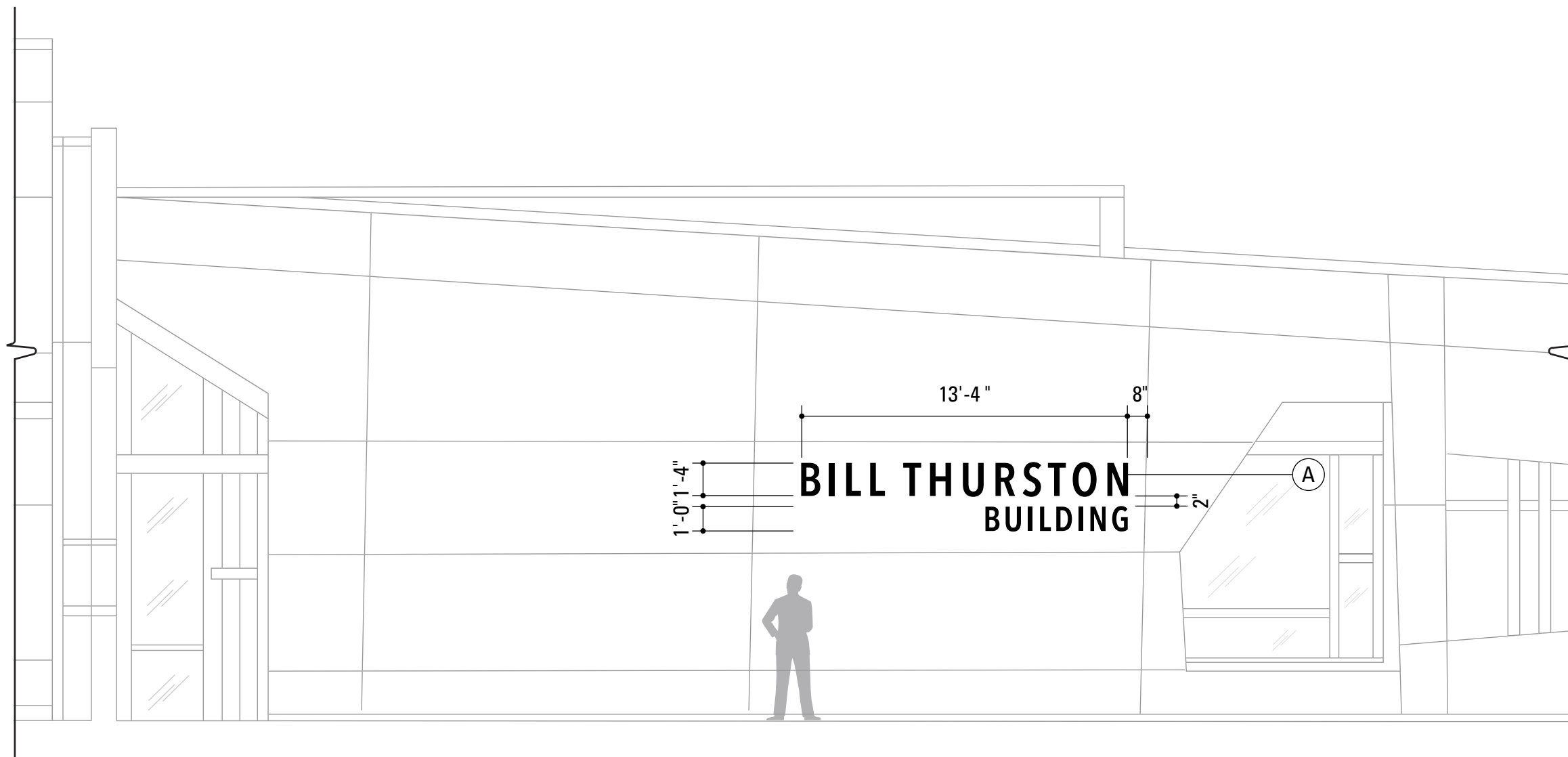
# BARBARA JONES BUILDING, SECONDARY LETTERS





# BILL THURSTON BUILDING, PRIMARY LETTERS





1 Vallejo Building ID.1: Front View  
Scale: 3/16"=1'-0"

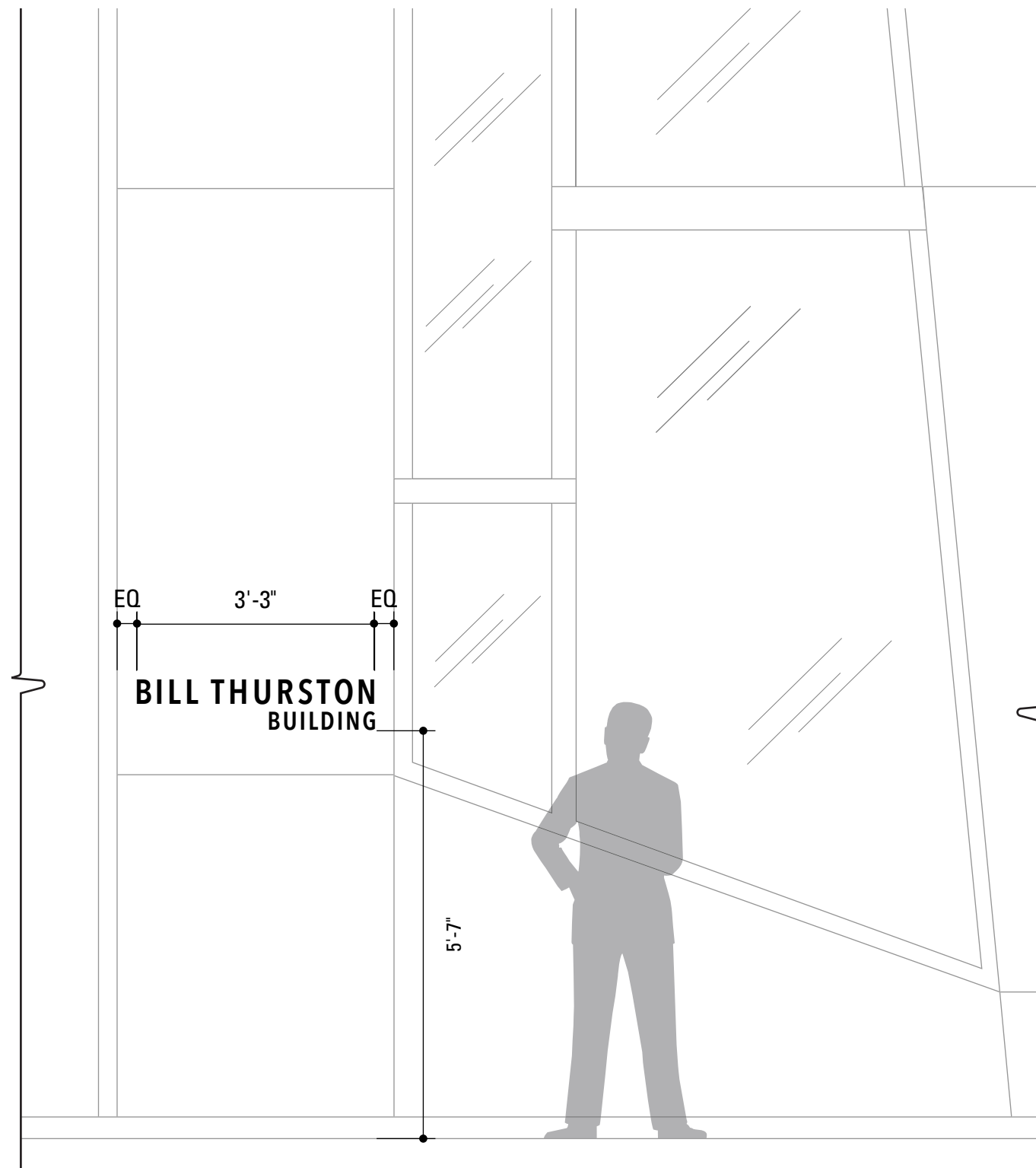
# BILL THURSTON BUILDING, PRIMARY LETTERS





# BILL THURSTON BUILDING, SECONDARY LETTERS





1 Vallejo Building ID.4: Front View  
Scale: 1/2"=1'-0"



2 Vallejo Building ID.4: Detail  
Scale: 1 1/2"=1'-0"

# BILL THURSTON BUILDING, SECONDARY LETTERS

