



SOLANO
COMMUNITY COLLEGE



Solano Community College Measure Q Quarterly Progress Update

November 6, 2019



TABLE OF CONTENTS

1. GENERAL INFORMATION	
A. Executive Summary	2
B. Project Team.....	3
2. PROGRAM SUMMARY	
A. Current Activities	5
B. Next 90 Days.....	10
C. Issues.....	10
3. FAIRFIELD CAMPUS SUMMARY	
A. Current Activities	11
B. Next 90 Days.....	11
C. Issues.....	11
4. VACAVILLE CAMPUS SUMMARY	
A. Current Activities	12
B. Next 90 Days.....	12
C. Issues.....	12
5. VALLEJO CAMPUS SUMMARY	
A. Current Activities	13
B. Next 90 Days.....	13
C. Issues.....	13
6. DISTRICTWIDE PROJECTS SUMMARY	
A. Current Activities	14
B. Next 90 Days.....	14
C. Issues.....	14
7. FINANCIAL SUMMARY	
A. Budget Update	15
B. Reserve Status.....	15
C. Contract Status	15
D. Payment Status.....	15
8. PROGRAM BUDGET SUMMARY	
A. Program Budget Summary	16
9. SCHEDULE FOR MAJOR ACTIVE BUILDING PROJECTS	
A. Schedule for Major Active Building Projects.....	17
10. PROJECT REPORTS	
A. Individual Project Reports – Active	18
B. Individual Project Reports – In Close-Out.....	18
C. Individual Project Reports – Closed.....	18

1. GENERAL INFORMATION

A. EXECUTIVE SUMMARY

Measure Q, approved by the voters in 2012, authorized general obligation bonds in the amount of \$348,000,000 for acquiring, constructing and repairing facilities, sites and equipment in order to prepare Solano County and City of Winter's students and veterans for universities and jobs.

This Solano CCD Measure Q Quarterly Progress Update report is produced for the District and made available to the Board of Trustees, the Citizens Bond Oversight Committee (CBOC), and interested parties. This report describes program and project progress and expenditures from July 1, 2019 through September 30, 2019. The District is currently in fiscal year-end close and is also in process of completing the annual financial audit.

In this report, you will find the following sections:

- **Program Summary** of current activities, 90-day look ahead and notes about any issues.
- **Campus Summaries** for Fairfield, Vacaville and Vallejo campuses. These sections highlight the current activities, 90-day look ahead and any issues.
- **Financial Summary** section, which summarizes the expenditures to date and variance from the last report.
- **Program Budget Summary**, based on the Board-approved Bond Spending Plan as of May 1, 2019, organized by program, campus and project. It includes a total of all expenditures as of September 30, 2019.
- **Schedule for Major Active Building Projects.**
- **Project Reports** section with more detailed information for individual projects, organized as "active", "in close-out", or "closed."

Brief monthly project updates may be found on the District's website, www.solano.edu. Click on Bonds Program. Click on Active Project Status & Updates.

B. PROJECT TEAM

OWNER – SOLANO COMMUNITY COLLEGE DISTRICT:

There are many staff and faculty members of the Solano Community College District who contribute to the success of the Measure Q Bond Program. Following are some of the key staff who actively participate in delivery of the overall program and its projects.

- James “Kimo” Calilan, Director of Technology Services and Support
- Rob Diamond, Vice President Finance and Administration
- Celia Esposito-Noy, Ed.D., Superintendent-President
- Myron Hord, Assistant Facilities Director
- Victoria Lamica, Director of Purchasing and Support Services
- Lucky Lofton, Executive Bonds Manager
- Dawna Murphy, Accountant
- Jim Petromilli, Interim Chief Technology Officer
- Laura Scott, Bond Purchasing Agent
- Jason Yi, Project Manager

PROGRAM & DESIGN MANAGER:

- Kitchell CEM

CONSTRUCTION MANAGERS:

- Swinerton Management and Consulting Services

DISTRICT CONSULTANTS CURRENTLY ACTIVE:

- **District Project Labor Agreement Coordination Consultant:** Vlaming and Associates
- **District Construction Counsel:** Dannis Woliver Kelley (DWK)

PROJECT-SPECIFIC ARCHITECTS and ENGINEERS CURRENTLY ACTIVE:

- **Science Building, Phase I (FF Campus):** Lionakis (Criteria Architect), Wallace & Kuhl (Geotechnical)
- **Library/Learning Resource Center (FF Campus):** Noll & Tam Architects, Ninyo & Moore (Geotechnical), First Carbon Solutions (Environmental)
- **Agriculture (Horticulture) Project, (FF Campus):** MADI Group, Inc.
- **Intersection Improvements Project (VV Campus):** Omni Means (Civil Engineer)
- **Small Capital Projects:** Aedis Architects, HMR Architects

BOARD APPROVED CONSULTANT POOLS

DISTRICT POOL OF ENVIRONMENTAL CONSULTANTS:

- Dudek
- First Carbon Solutions
- Rincon Consultants, Inc.

DISTRICT POOL OF CIVIL ENGINEERING CONSULTANTS:

- Coffman Engineers
- Complete Project Solutions, Inc.
- Creegan + D'Angelo
- CSW/ST2

DISTRICT POOL OF ARCHITECTS:

- Aedis Architects
- CA Architects
- DLR Group/Kwan Henmi
- Dreyfuss + Blackford Architecture
- HGA
- HMR Architects
- JK Architecture Engineering
- Lionakis
- MADI Group, Inc.
- Noll & Tam Architects
- Smith Group
- tBP Architecture, Inc.

DISTRICT POOL OF CM SERVICES FIRMS:

- Cordoba Corporation
- Cumming
- JGM+CBMG
- Kitchell CEM
- Swinerton Management & Consulting
- Vanir

DISTRICT POOL OF GEOTECHNICAL SERVICES FIRMS:

- A3GEO, Inc.
- Ninyo & Moore
- Wallace Kuhl & Associates

DISTRICT POOL OF MEP (MECHANICAL-ELECTRICAL-PLUMBING) SERVICES FIRMS:

- IMEG Corp.
- Salas O'Brien

DISTRICT POOL OF MATERIAL TESTING AND SPECIAL INSPECTIONS SERVICES

FIRMS:

- Apex Testing Laboratories
- Applied Materials & Engineering, Inc.
- Consolidated Engineering Laboratories
- Construction Testing Services, Inc.
- Geocon Consultants, Inc.
- Ninyo & Moore
- Terraco
- Wallace Kuhl & Associates

DISTRICT POOL OF DSA INSPECTOR SERVICES FIRMS:

- Optima Inspections Incorporated
- K & B Construction Services, Inc.
- TYR, Inc.

DISTRICT POOL OF COMMISSIONING SERVICES FIRMS:

- 3QC, Inc.
- Engineering Economics, Inc
- Enovity, Inc.
- GLUMAC
- Guttman & Blaevoet
- Interface Engineering, Inc.

Please note that the Measure Q Bond Program has had a Board-approved Small, Local and Diverse Business Enterprises (SLDBE) Program since 2015. This Program ensures inclusion of Solano County businesses in contracting and supplier opportunities generated by the Measure Q Bond Program. This Program collects and reports data for General Contractors, and Design-Builders directly contracted by the District. This Program does not collect data or report on subcontractors and suppliers working on projects when their agreement is not directly with the District unless reports by a General Contractor or Design-Builder. This Program also does not collect data on Construction Managers, Architects, Engineers and other Consultants. As a result, this report does not reflect information on SLDBE firms and companies in these categories.

2. PROGRAM SUMMARY

A. CURRENT ACTIVITIES

1. Financials and Funding

- a. \$1,484,518 was expended this reporting period, July 1, 2019 – September 30, 2019. The total expended to September 30, 2019 for the entire Measure Q Bond Program was \$175,024,563.

2. Planning

- a. **Consultant Pools.** The existing professional consultant pools have been in place nearly five years.

- During the past quarter all except one consultant pool – the Commissioning Services firms pool - have been refreshed through the formal Request for Qualifications (RFQ) process. Additionally, a new consulting services pool – for MEP (Mechanical, Electrical and Plumbing) Engineering Services firms – has been established through the formal RFQ process. The remaining consultant pool – Commissioning Services firms – will be refreshed in 2020.
- b. **District Design Standards:** New revisions and possible future modifications are being tracked and recorded for the next update, which is not anticipated until early spring 2020.
- **Signage Standards:** Signage standards revisions have been completed. The new campus directory map for Vacaville Center is complete and the Fairfield Campus directory map is still in progress.
- c. **Vallejo Belvedere Property Lot Line Adjustment:** Minor lot line adjustment is in progress to remedy an encroachment issue.
- d. **Facilities Master Plan:** The District has begun an update to its currently adopted Facilities Master Plan. Measure Q documents have been provided to the team working with District staff on this update. Measure Q program team members assist the District with this deliverable, as needed/requested.

3. Project Update for Active Projects

FAIRFIELD CAMPUS:

- a. **Library/Learning Resource Center Project (Building 100 Replacement):**
- Bidding is underway for the General Contractor contract. Eight (8) companies were Pre-Qualified as potential bidders for this work. All companies participated in the Mandatory Pre-Bid Meetings and Site Walks.
 - Furniture and equipment selection has resumed to allow for some initial purchases in early spring 2020.
 - Consultant solicitations were issued for Material Testing & Inspections, DSA Project Inspector and Commissioning Agent. Selection has been made for each of these and Board approval for all contracts should be complete by October 16, 2019.
 - Design continues for relocation of Graphics and other functions that are not moving into the new Library/Learning Resource Center.
 - Planning Groundbreaking Ceremony for November 6, 2019.
- b. **Science Building (Phase I) Project (Project in Close Out):**
- Fall 2019 classes were held in the new building.
 - Ribbon-cutting ceremony was held on August 21st.
 - Impacts to the local economy (*At the conclusion of large projects, this Report will reflect impacts to the local economy, when that information is made available.*):
 - Approximately 120,000 hours were spent on the planning, design, and construction of the project. This is equivalent to 60 full-time jobs created over the course of one year.

- Over 70 individual Solano County residents were directly employed in the construction of this project.
 - Over 40 separate specialty trades were subcontracted in the construction of this project.
- c. **Horticulture Phase 1 (DSA Close-Out)** (*Project in Close-Out*): Once Phase 2 work is completed as required by DSA, this project will also be closed.
- d. **Horticulture Improvements – Phase 2 Modular Restroom** (*Project in Close-Out*): Work is complete. DSA close-out is in process.

VACAVILLE CAMPUS:

- e. **Vacaville Classroom Building ‘Annex’ Renovation (Phase 2) – Corbels Removal:**
- The exterior decorative wood corbels design is complete.
 - Bid documents were sent out and five (5) bids were received on September 30, 2019. Bids were under review at the end of this reporting period.
- f. **Vacaville Center Intersection Improvements Project:**
- Final paperwork and confirmation of completion sent to City.

VALLEJO CAMPUS: No work at this campus this reporting period.

DISTRICTWIDE PROJECTS:

- g. **IT Infrastructure Project – Phase 2**
- Equipment purchases continue.
- h. **Small Capital Projects:**
- Small Capital Projects in progress:
 - Portables Low Voltage Revisions – All work complete except for re-asphalting of patch by PG&E.
 - B300 Modifications – Mailroom and Graphics – Design continues.
 - Bleacher Replacement - Baseball and Soccer - Architect has been selected and design work has begun.
- i. **Planning, Assessments & Program Management:**
- On-going activities of the District bond team, program management team, and consultants to support the Bond Program.

4. Communications

- a. **User Groups:**
- Fairfield Campus – Library/Learning Resource Center: FF&E selection moving forward to allow for initial purchases in early spring 2020.

b. **Community Outreach:**

- In 2015, the Board approved a Small, Local and Diverse Business Enterprises (SLDBE) Program to ensure inclusion of Solano County businesses in contracting and supplier opportunities generated by the Measure Q Bond Program.
- Revisions to the SLDBE Program were approved by the Board on June 6, 2018. For contracts initiated after June 6, 2018, the participation goal was revised to be 20% of the construction cost, achievable through the combined participation of the following:
 - Local DBE Businesses (minimum 10%)
 - Local non-DBE Businesses
 - Non-local DBE Businesses

The participation goal is per project for large projects, and overall for small projects. The status of SLDBE participation in the bond projects is tracked and reported at regular intervals, with a final reporting at the end of each project.

Following are the current participation statistics.

- Status: Small Capital Projects – Phase 1 (participation goal 15%)
Construction Contracts, \$1.59M, (100% contracts in place)

Certified Small Local Diverse Businesses	\$160,782	10.09%
Local Businesses	\$261,291	16.41%
- Status: Small Capital Projects – Phase 2 (participation goal 20%)
Construction Contracts, \$581,524

Certified Small Local Diverse Businesses	\$16,295	2.8%
Local Businesses	\$0	0%
Non-local Certified DBEs	\$554,012	95.3%

c. **City and Local Agency Communications:**

- Communications with City of Vallejo regarding Vallejo Center Belvedere site.

5. **Citizens Bond Oversight Committee (CBOC):**

- a. CBOC Meeting was held on August 20, 2019. May 1, 2019 and August 21, 2019 Quarterly Reports were reviewed and brief updates on projects were provided.
- b. The next CBOC Meeting is scheduled for December 3, 2019.

6. **Board of Trustee Actions – Bond Program Related Items**

Board Meeting Minutes can be viewed on the College's website, www.solano.edu.

a. **July 17, 2019 Regular Board Meeting (Vacaville Center),**

2001 North Village Parkway, Vacaville

The following Consent and Action Items were approved at this meeting:

- Notice of Completion for Construction Services for the B300 Cadaver Table Removal Project

- Notice of Completion for Construction Services for the B300 Exterior Signage Project
- Notice of Completion for Construction Services for the B2700 Dedication Plaque Install Project
- Notice of Completion for Construction Services for AV Upgrades and IT Infrastructure Improvements Project
- Notice of Completion for Construction Services for the Portables IT Network, Low Voltage Revisions Project
- Notice of Completion for Construction Services for the Portables Fire Alarm, Low Voltage Revisions Project
- Contract Award to Ninyo and Moore for Geotechnical Monitoring Services for the Library/Learning Resource Center Project (Building 100 Replacement)
- Contract Award to Yocha Dehe Wintun Nation for Tribal Monitoring Services for the Library/Learning Resource Center Project (Building 100 Replacement)

b. **August 7, 2019 Regular Board Meeting,**

4000 Suisun Valley Road, Fairfield

The following Consent and Action Items were approved at this meeting:

- Notice of Completion for Construction Services for the Horticulture Restroom Project
- Notice of Completion for Construction Services for the Horticulture Restroom Data Project
- Amendment #2 to MADi Group, Inc. for the Horticulture Site Improvements Project

Information Items:

- Library Project Update

c. **August 21, 2019 Regular Board Meeting,**

4000 Suisun Valley Road, Fairfield

The following Consent and Action Items were approved at this meeting:

- Notice of Completion for Construction Services for the B400 Additional Signage Project
- Notice of Completion for Construction Services for the Vacaville Center Annex Building ASL Signage Project

d. **September 4, 2019 Regular Board Meeting (Board Study Session),**

4000 Suisun Valley Road, Fairfield

The following Consent and Action Items were approved at this meeting:

- Contract Award to Aedis Architects for Professional Services for Bleachers Replacement-Fields Closeout Project

Information Items:

- Measure Q Quarterly Progress Update Report to the Governing Board

e. **September 18, 2019 Regular Board Meeting,**

4000 Suisun Valley Road, Fairfield

The following Consent and Action Items were approved at this meeting:

- Notice of Completion for Construction Services for Fume Hood Controls Installation and Programming Project

- Contract Amendment #1 to HMR Architects for Additional Professional Services for the B300 Modifications; Mailroom and Graphics Project
- Contract Amendment #1 to Kate Keating & Associates, Inc. for Graphic Design Services for Wayfinding Project

B. PROGRAM - NEXT 90 DAYS

1. Continued oversight of active projects and planning for future projects.
2. Continued user engagement in all active building projects.
3. Ongoing communication with the campus community regarding any interruptions related to upcoming construction activities.
4. Citizens Bond Oversight Committee Meeting.
5. Continue with Outreach events and efforts.

C. PROGRAM – ISSUES

1. No issues or concerns at this time.

3. FAIRFIELD CAMPUS SUMMARY

A. CURRENT ACTIVITIES – Please see the attached project sheets (Section 9 of this report) for detailed information about the projects. The following is a list of current projects:

1.	Library/Learning Resource Center (Building 100 Replacement)	Section 9, Active Projects
2.	Science Building (Phase 1)	Section 9, Projects in Close Out
3.	Horticulture Phase 1 – (DSA Close-Out)	Section 9, Projects in Close Out
4.	Horticulture Phase 2 – Modular Restroom	Section 9, Projects in Close Out

B. NEXT 90 DAYS

1. Library/Learning Resource Center (Building 100 Replacement): Finish transition of project management to Construction Manager. Complete bidding process to Pre-Qualified General Contractors and award contract following Board approval and State certification. Place consultants under contract – DSA Project Inspector, Material Testing and Special Inspections, and Commissioning Agent. Complete procurement documents for early-order FF&E. Receive release of State Construction funds. Begin construction. Host Groundbreaking Ceremony on November 6th.
2. Science Building (Phase 1): Complete close out.
3. Horticulture Phase 1 (DSA Close-Out): Close-out with DSA.
4. Horticulture Phase 2 – Modular Restroom: Complete close-out activities and obtain DSA certification.

C. ISSUES

1. No major issues or concerns at this time.

4. VACAVILLE CAMPUS SUMMARY

- A. CURRENT ACTIVITIES** – Please see the attached project sheets (Section 9 of this report) for detailed information about each project. The following is a list of current projects:

1.	Vacaville Classroom Building 'Annex' Renovation (Phase 2) - Corbels Removal	Section 9, Active Projects
2.	Vacaville Center Intersection Improvements	Section 9, Projects in Close Out
3.	Biotechnology and Science Building - Fume Hood Controls	Section 9, Closed Projects
4.	Vacaville Center HVAC Upgrade	Section 9, Closed Projects

B. NEXT 90 DAYS

1. Vacaville Classroom Building 'Annex' Renovation (Phase 2) - Corbels Removal: Award construction contract to General Contractor. Start construction, if possible prior to wet weather.
2. Vacaville Center Intersection Improvements: Complete financial close out.
3. Aeronautics Building: Begin survey work at the Nut Tree Facility. Select consultant for design services. *Project Sheet to be provided with future Quarterly Report.*

C. ISSUES

1. No major issues or concerns at this time.

5. VALLEJO CAMPUS SUMMARY

A. CURRENT ACTIVITIES

1. No projects at this time.

B. NEXT 90 DAYS

1. No projects at this time.

C. ISSUES

1. No major issues or concerns at this time.

6. DISTRICTWIDE PROJECTS SUMMARY

- A. CURRENT ACTIVITIES** – Please see the attached project sheets (Section 9 of this report) for detailed information about each project. The following is a list of current projects:

1.	IT Infrastructure Improvements (Phase 2)	Section 9, Active Projects
2.	Small Capital Projects: Portables Low Voltage Revisions	Section 9, Active Projects
3.	Small Capital Projects: B300 Modifications – Graphics & Mailroom	Section 9, Active Projects
4.	Small Capital Projects - Bleacher Replacement - Baseball & Soccer	Section 9, Active Projects
5.	Planning, Assessments & Program Management	Section 9, Active Projects

B. NEXT 90 DAYS

1. IT Infrastructure Improvements (Phase 2): Equipment purchases continue.
2. Small Capital Projects - Portables Low Voltage Revisions: Work with PG&E, as possible, to re-asphalt small patched area at gas line.
3. Small Capital Projects - 300 Modifications – Graphics & Mailroom: Complete design. Bid work and award contract. Start construction.
4. Small Capital Projects – Bleacher Replacement – Baseball & Soccer: Submit close-out paperwork to DSA for uncertified DSA application. Begin design for bleacher replacements at baseball and soccer. Submit bleacher design to DSA for review.
5. Planning, Assessments & Program Management: On-going activities of the District bond team, program management team, and consultants to support the Bond Program and its projects.

C. ISSUES

1. No major issues or concerns at this time.

7. FINANCIAL SUMMARY

A. BUDGET UPDATE

1. Please see the attached “Program Summary Budget” for a project by project view of the budget. Through September 30, 2019, a total of \$175,024,563 has been expended against the Bond Program budget of \$351,829,446. This current budget includes \$3,829,446 net interest earned through December 31, 2018. This financial period, July 1, 2019 through September 30, 2019, expenditures totaled \$1,484,518.
2. Projected spending cash flow continues to be monitored in relation to bond spending requirements.

B. RESERVE STATUS

Reserve for the Measure Q Bond Program is based on the approved May 1, 2019 Revised Bond Spending Plan. Bond interest accrues annually.

C. CONTRACT STATUS

The Program Summary Report provides “Current Project Budget” and “Measure Q Expenditure” information through September 30, 2019.

D. PAYMENT STATUS

Contractor and Consultant payments have been processed within a satisfactory time period.

8. PROGRAM BUDGET SUMMARY

- A. Program Budget Summary – organized by Program, Campus and Project, and based on Board of Trustees approved May 1, 2019 Revised Bond Spending Plan.



November 6, 2019 Quarterly Report

Status ⁽⁴⁾	PROJECT NAME	MEASURE Q PROJECT BUDGET AS OF 2/06/2019 BSP ⁽¹⁾	BOT APPROVED CHANGE	MEASURE Q PROJECT BUDGET AS OF 5/01/2019 BSP ⁽²⁾	OTHER FUNDING BUDGET ⁽³⁾	REDEVELOPMENT FUND	OTHER FUNDING EXPENDITURES AS OF 09/30/2019 ⁽⁵⁾	MEASURE Q EXPENDITURES AS OF 09/30/2019 ⁽⁵⁾	PERCENT SPENT	PROJECT NO.
	FF CAMPUS									
A	Library & Learning Resource Center	\$ 24,300,000		\$ 24,300,000	\$ 20,148,000	\$ 1,500,000	\$ 2,717,487	\$ 507,895	7.0%	820110
C	Performing Arts Building (Phase 1 B1200 Renovation)	\$ 6,229,718		\$ 6,229,718	\$ 13,760,000		\$ 13,760,000	\$ 6,229,718	100.0%	821210/821220/821215
F	Performing Arts Building (Phase 2)	\$ 13,700,000		\$ 13,700,000				\$ 33,151	0.2%	821230
A	Science Building (Phase 1)	\$ 36,600,000	\$ (1,500,000)	\$ 35,100,000				\$ 34,840,890	95.2%	820310
F	Science & Math Building (Phase 2)	\$ 8,000,000		\$ 8,000,000					0.0%	TBD
F	Career Technology Building (CTE)	\$ 3,000,000		\$ 3,000,000					0.0%	TBD
A	Agriculture (Horticulture)	\$ 2,000,000		\$ 2,000,000				\$ 1,311,664	65.6%	821030/821035
	VV CAMPUS									
A	VV Classroom Building Purchase & Renovation	\$ 8,200,000		\$ 8,200,000					85.2%	830200/830210/830220
A	Biotechnology & Science Building	\$ 33,383,435		\$ 33,383,435				\$ 33,310,089	99.8%	830310/830320/830330
A	Aeronautics & Workforce Development Building	\$ 15,000,000		\$ 15,000,000				\$ 1,290,385	8.6%	830400/830410/830420
F	Student Success Center/LRC	\$ 15,500,000		\$ 15,500,000					0.0%	TBD
F	Fire Training	\$ 6,250,000		\$ 6,250,000					0.0%	TBD
C	Vacaville Center HVAC Upgrade	\$ 2,150,306		\$ 2,150,306				\$ 2,150,306	100.0%	830230
	VI CAMPUS									
C	Vallejo Property Purchase Belvedere	\$ 4,794,343		\$ 4,794,343				\$ 4,794,343	100.0%	840310
C	Vallejo Property Purchase Northgate	\$ 6,871,471		\$ 6,871,471				\$ 6,871,471	100.0%	840910
F	Site Improvements	\$ 2,825,000		\$ 2,825,000					0.0%	840920/840320
C	Autotechnology Building	\$ 23,735,961		\$ 23,735,961				\$ 23,735,961	100.0%	840210/840220
F	Student Success Center/LRC	\$ 22,000,000		\$ 22,000,000					0.0%	TBD
F	Career Technology Building	\$ 19,800,000		\$ 19,800,000					0.0%	TBD
C	Vallejo Center HVAC Upgrade	\$ 2,135,178		\$ 2,135,178				\$ 2,135,178	100.0%	840430
	INFRASTRUCTURE IMPROVEMENTS									
A	IT Infrastructure Improvements	\$ 14,200,000		\$ 14,200,000					40.9%	812100/812500 to 812590
C	Utility Infrastructure Upgrade (Energy)	\$ 24,671,331		\$ 24,671,331	\$ 712,447		\$ 712,447	\$ 24,671,331	100.0%	814010/814020/814030/ 814040/814050
	ADA & CLASSROOM IMPROVEMENTS									
A	Small Capital Projects	\$ 8,753,246	\$ 328,989	\$ 9,082,235				\$ 3,630,214	41.5%	813005 to 813048
A	ADA Improvements	\$ 10,900,000		\$ 10,900,000	\$ 50,000		\$ 50,000	\$ 388,082	4.0%	813210
	PLANNING, ASSESSMENTS & PROGRAM MANAGEMENT									
A	Program Management, District Support and Planning	\$ 25,400,000		\$ 25,400,000				\$ 15,790,345	62.2%	811010/811011/811020/ 811021/811030
	RESERVE, INTEREST & TREASURY FEES									
	Program Reserve	\$ 11,100,468	\$ 1,500,000	\$ 12,600,468						
	Treasury Fees	\$ -		\$ -				\$ 534,386		
	TOTAL BOND SPENDING PLAN	\$ 351,500,457	\$ 351,829,446	\$ 351,829,446	\$ 34,670,447	\$ 1,500,000	\$ 17,239,934	\$ 175,024,563	49.9%	

⁽¹⁾ Per Bond Spending Plan Revision Approved by BOT 2/6/2019

⁽²⁾ Per Bond Spending Plan Revision Approved by BOT 5/1/2019

⁽³⁾ Note other funding sources include State Funding, Proposition 39 Energy and Solano Transportation Authority

⁽⁴⁾ A=Active Project; F=Future Project/Project On Hold; C=Closed Project. VV Aeronautics Project activity associated with property purchase and schematic design/budget confirmation only.

⁽⁵⁾ District is currently in fiscal year-end close and is also in process of the annual financial audit, any variances will be included in the next quarterly report.

9. SCHEDULE FOR MAJOR ACTIVE BUILDING PROJECTS

- A. Schedule for Major Active Building Projects based on May 1, 2019 Board Approved Revised Bond Spending Plan.

Note that the following schedule for IT Infrastructure Improvements reflects Phase 2 (Tranche 2), as that is the portion of the project that is active. Completed projects are no longer included.

10. PROJECT REPORTS

- A. Project Report Updates for Active Projects
- B. Project Report Update for Projects in Close-Out
- C. Project Report Updates for Closed Projects

Project Reports include a dashboard column next to schedule and budget indicating one of the following:

- “Green” – OK. Project is on schedule and on budget.
- “Yellow” – Caution. Project is significantly delayed with some impacts, but solutions are in place to mitigate any impacts. Project is at 0% budget contingency remaining balance and project is not near completion.
- “Red” – Project is significantly delayed and/or over budget and may require Board approval of budget change.

ACTIVE PROJECTS



**Solano Community College
Library/Learning Resource Center
(Building 100 Replacement)**

A/E: Noll & Tam Architects

Contractor: TBD

Status: Active

PROJECT SUMMARY

Project: Library/Learning Resource Center

Project Scope:

This project includes design and construction of a new Fairfield Campus Library/Learning Resource Center to replace the B100 Library, demolition of old portable buildings and B100 Library, and site restoration of these areas. The project will include the following components: planning, surveys and technical studies, design, construction, demolition, furniture, fixtures and equipment, inspection and project/construction management.

Project Manager:	Noe Ramos (Kitchell)	Status:	Active
Construction Manager:	Cary Talbott (Swinerton)		
Original Project Budget:	\$42,681,000	Current Project Budget:	\$45,948,000
Project Start:	November 2017	Project End:	December 2021

Legend	
<input type="checkbox"/>	Not Started
<input type="checkbox"/>	In Progress
<input checked="" type="checkbox"/>	Completed

SCHEDULE

DESCRIPTION	Design			DSA	BID	IN CONST	% Comp.	OCCUPIED	CLOSE-OUT	ON SCHED	COMMENTS
	SD	DD	CD								
Bidding Phase	<input checked="" type="checkbox"/>	<input checked="" type="checkbox"/>	<input checked="" type="checkbox"/>	<input checked="" type="checkbox"/>	<input type="checkbox"/>	<input type="checkbox"/>	5%	<input type="checkbox"/>	<input type="checkbox"/>	Yes	Bid Phase

BUDGET

FUNDING SOURCE: Measure Q, State Funding, and Redevelopment Pass-Through Funding

JCAF	Amount Budgeted			Total Budget (A)	Encumbered (B)	Forecast to Complete (C)	Forecast at Completion (B+C)	Expenditures to Date (E)	Encumbrance Balance (B-E=F)	Budget Balance (A-B=G)
	Measure Q	State Capital Outlay	Redevelopment Pass-Through Funds							
1. SITE ACQUISITION	\$ -	\$ -	\$ -	\$ -	\$ -	\$ -	\$ -	\$ -	\$ -	\$ -
2. PLANS	\$ 57,029	\$ -	\$ -	\$ 57,029	\$ 48,217	\$ 8,812	\$ 57,029	\$ 43,405	\$ 4,812	\$ 8,812
3. WORKING DRAWINGS	\$ 118,857	\$ -	\$ -	\$ 118,857	\$ 27,040	\$ 91,817	\$ 118,857	\$ 22,360	\$ 4,680	\$ 91,817
4. CONSTRUCTION	\$ 20,675,540	\$ -	\$ -	\$ 20,675,540	\$ 10,934	\$ 20,664,606	\$ 20,675,540	\$ 10,934	\$ -	\$ 20,664,606
5. CONTINGENCY	\$ 1,958,214	\$ -	\$ -	\$ 1,958,214	\$ -	\$ 1,958,214	\$ 1,958,214	\$ -	\$ -	\$ 1,958,214
6. ARCHITECTURAL AND ENGINEERING OVERSIGHT	\$ 333,539	\$ -	\$ -	\$ 333,539	\$ 304,613	\$ 28,926	\$ 333,539	\$ -	\$ 304,613	\$ 28,926
7. TESTS AND INSPECTIONS	\$ -	\$ -	\$ -	\$ -	\$ -	\$ -	\$ -	\$ -	\$ -	\$ -
8. CONSTRUCTION MANAGEMENT	\$ 724,000	\$ -	\$ -	\$ 724,000	\$ -	\$ 724,000	\$ 724,000	\$ -	\$ -	\$ 724,000
9. TOTAL CONSTRUCTION COSTS (4 THRU 8 ABOVE)	\$ 23,691,293	\$ -	\$ -	\$ 23,691,293	\$ 315,547	\$ 23,375,746	\$ 23,691,293	\$ 10,934	\$ 304,613	\$ 23,375,746
10. FURNITURE AND GROUP II EQUIPMENT	\$ 432,821	\$ -	\$ -	\$ 432,821	\$ 432,821	\$ -	\$ 432,821	\$ 431,196	\$ 1,625	\$ -
MEASURE Q - PROJECT COST	\$ 24,300,000	\$ -	\$ -	\$ 24,300,000	\$ 823,625	\$ 23,476,375	\$ 24,300,000	\$ 507,895	\$ 315,730	\$ 23,476,375
1. SITE ACQUISITION	\$ -	\$ -	\$ -	\$ -	\$ -	\$ -	\$ -	\$ -	\$ -	\$ -
2. PLANS	\$ -	\$ 1,543,000	\$ -	\$ 1,543,000	\$ 1,543,000	\$ -	\$ 1,543,000	\$ 1,543,000	\$ -	\$ -
3. WORKING DRAWINGS	\$ -	\$ 1,209,000	\$ -	\$ 1,209,000	\$ 1,209,000	\$ -	\$ 1,209,000	\$ 1,174,487	\$ 34,513	\$ -
4. CONSTRUCTION	\$ -	\$ 11,601,000	\$ -	\$ 11,601,000	\$ -	\$ 11,601,000.00	\$ 11,601,000	\$ -	\$ -	\$ 11,601,000
5. CONTINGENCY	\$ -	\$ 1,532,000	\$ -	\$ 1,532,000	\$ -	\$ 1,532,000.00	\$ 1,532,000	\$ -	\$ -	\$ 1,532,000
6. ARCHITECTURAL AND ENGINEERING OVERSIGHT	\$ -	\$ 652,000	\$ -	\$ 652,000	\$ 624,000	\$ 28,000.00	\$ 652,000	\$ -	\$ 624,000	\$ 28,000
7. TESTS AND INSPECTIONS	\$ -	\$ 648,000	\$ -	\$ 648,000	\$ -	\$ 648,000.00	\$ 648,000	\$ -	\$ -	\$ 648,000
8. CONSTRUCTION MANAGEMENT	\$ -	\$ 674,000	\$ -	\$ 674,000	\$ -	\$ 674,000.00	\$ 674,000	\$ -	\$ -	\$ 674,000
9. TOTAL CONSTRUCTION COSTS (4 THRU 8 ABOVE)	\$ -	\$ 15,107,000	\$ -	\$ 15,107,000	\$ 624,000	\$ 14,483,000.00	\$ 15,107,000	\$ -	\$ 624,000	\$ 14,483,000
10. FURNITURE AND GROUP II EQUIPMENT	\$ -	\$ 2,289,000	\$ -	\$ 2,289,000	\$ -	\$ 2,289,000	\$ 2,289,000	\$ -	\$ -	\$ 2,289,000
STATE CAPITAL OUTLAY - PROJECT COST	\$ -	\$ 20,148,000	\$ -	\$ 20,148,000	\$ 3,376,000	\$ 16,772,000	\$ 20,148,000	\$ 2,717,487	\$ 658,513	\$ 16,772,000
4. CONSTRUCTION	\$ -	\$ -	\$ 1,500,000	\$ 1,500,000	\$ -	\$ 1,500,000.00	\$ 1,500,000	\$ -	\$ -	\$ 1,500,000
REDEVELOPMENT FUND - PROJECT TOTAL	\$ 1,500,000	\$ -	\$ 1,500,000	\$ 1,500,000	\$ -	\$ 1,500,000	\$ 1,500,000	\$ -	\$ -	\$ 1,500,000
TOTAL PROJECT COST	\$ 24,300,000	\$ 20,148,000	\$ 1,500,000	\$ 45,948,000	\$ 4,199,625	\$ 41,748,375	\$ 45,948,000	\$ 3,225,382	\$ 974,243	\$ 41,748,375

Issues and Concerns

1. No issues or concerns at this time.

Next 90 Days

- Public bid held on 9/25/19 for pre-qualified general contractors.
- Post bid interview.
- BOT agenda items for 10/16 will be the approval of General Contractor, Special Inspections, Inspector of Record and Commissioning.
- Submit bid package to State for approval.
- Receive State release of Construction Phase funding.
- Issue NTP to general contractor.



South Façade and Entry



First Floor Plan



Second Floor Plan



Solano Community College VV Classroom Building 'Annex' Renovation (Phase 2)

A/E: CA Architects

Contractor: McCuen Construction **Status:** Active
(Primary Project)



PROJECT SUMMARY

Project: VV Classroom Building Renovation (Phase 2)

Project Scope: Vacaville Classroom Building Renovation includes required DSA Certification building upgrades to provide instructional and student support spaces at the Vacaville Center site. The project will include the following components: building purchase, planning, assessments, surveys, design and construction; furniture, fixtures and equipment; project/construction management.	Project Manager: Noe Ramos (sign and corbels)
	Status: Active
	Original Project Budget: \$4,607,681 Current Project Budget: \$3,812,147
	Project Start: May 2017 Project End: December 2019

Legend
<input type="checkbox"/> Not Started <input type="checkbox"/> In Progress <input checked="" type="checkbox"/> Completed

SCHEDULE

DESCRIPTION	Design			DSA	BID	IN CONST	% Comp.	OCCUPIED	CLOSE-OUT	ON SCHED	COMMENTS
	SD	DD	CD								
See Comments	■	■	■	■	■	■	99%	■	■	Yes	Building Project construction completed and closed. Several small additional projects in progress.

BUDGET

FUNDING SOURCE: Measure Q

JCAF	Amount Budgeted			Total Budget (A)	Encumbered (B)	Forecast to Complete (C)	Forecast at Completion (B+C)	Expenditures to Date (E)	Encumbrance Balance (B-E=F)	Budget Balance (A-B=G)
	Measure Q	State Capital Outlay	Prop 39							
1. SITE ACQUISITION	\$ -	\$ -	\$ -	\$ -	\$ -	\$ -	\$ -	\$ -	\$ -	\$ -
2. PLANS	\$ 139,815	\$ -	\$ -	\$ 139,815	\$ 139,537	\$ 278	\$ 139,815	\$ 139,537	\$ -	\$ 278
3. WORKING DRAWINGS	\$ 229,813	\$ -	\$ -	\$ 229,813	\$ 229,813	\$ -	\$ 229,813	\$ 226,762	\$ 3,051	\$ -
4. CONSTRUCTION	\$ 2,518,192	\$ -	\$ -	\$ 2,518,192	\$ 2,469,336	\$ 48,856	\$ 2,518,192	\$ 2,469,336	\$ -	\$ 48,856
5. CONTINGENCY	\$ 350,795	\$ -	\$ -	\$ 350,795	\$ -	\$ 350,795	\$ 350,795	\$ -	\$ -	\$ 350,795
6. ARCHITECTURAL AND ENGINEERING OVERSIGHT	\$ 102,050	\$ -	\$ -	\$ 102,050	\$ 102,050	\$ -	\$ 102,050	\$ 102,050	\$ -	\$ -
7. TESTS AND INSPECTIONS	\$ 320,204	\$ -	\$ -	\$ 320,204	\$ 303,071	\$ 17,133	\$ 320,204	\$ 303,071	\$ -	\$ 17,133
8. CONSTRUCTION MANAGEMENT	\$ 150,632	\$ -	\$ -	\$ 150,632	\$ 150,632	\$ -	\$ 150,632	\$ 150,632	\$ -	\$ -
9. TOTAL CONSTRUCTION COSTS (4 THRU 8 ABOVE)	\$ 3,441,873	\$ -	\$ -	\$ 3,441,873	\$ 3,025,089	\$ 416,784	\$ 3,441,873	\$ 3,025,089	\$ -	\$ 416,784
10. FURNITURE AND GROUP II EQUIPMENT	\$ 646	\$ -	\$ -	\$ 646	\$ 646	\$ -	\$ 646	\$ 646	\$ -	\$ -
11. TOTAL PROJECT COST	\$ 3,812,147	\$ -	\$ -	\$ 3,812,147	\$ 3,395,085	\$ 417,062	\$ 3,812,147	\$ 3,392,034	\$ 3,051	\$ 417,062

Issues and Concerns

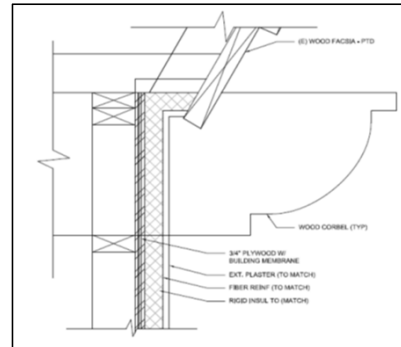
1. No issues or concerns at this time.

Next 90 Days

1. Award Construction Contract to General Contractor.
2. Start construction phase of corbel project.
3. Complete construction of corbel project.



Decorative Wood Corbels to be Removed Due to Dryrot Issues



Detail of existing corbel condition



**Solano Community College
IT Infrastructure Improvements (Phase 2)**

A/E: N/A

Contractor: N/A

Status: Active



PROJECT SUMMARY

Project: IT Infrastructure Improvements

Project Scope:

IT Infrastructure Improvements project is a district-wide technology infrastructure project intended to provide necessary network, communication systems, desktop services and equipment improvements in support of instructional, student support and office spaces. The project includes the following components: planning, assessment, surveys, design and construction; IT and security equipment procurement; and project/construction management.

Project Manager:	James (Kimo) Callan	Status:	Active
Total Project Budget:	\$14,200,000	Current Ph 2 Project Budget:	\$2,689,020
Original Ph 2 Project Budget:	\$2,489,000		
Project Start:	May 2017	Project End (Phase 2):	June 2020

Legend	
<input type="checkbox"/>	Not Started
<input type="checkbox"/>	In Progress
<input checked="" type="checkbox"/>	Completed

SCHEDULE

DESCRIPTION	Design			DSA	BID	IN CONST	% Comp.	OCCUPIED	CLOSE-OUT	ON SCHED	COMMENTS
	SD	DD	CD								
Procurement	<input type="checkbox"/>	<input type="checkbox"/>	<input type="checkbox"/>	<input type="checkbox"/>	<input type="checkbox"/>	<input type="checkbox"/>	67%	<input type="checkbox"/>	<input type="checkbox"/>	Yes	

OK

BUDGET

FUNDING SOURCE: Measure Q

JCAF	Amount Budgeted			Total Budget (A)	Encumbered (B)	Forecast to Complete (C)	Forecast at Completion (B+C)	Expenditures to Date (E)	Encumbrance Balance (B-E=F)	Budget Balance (A-B=G)
	Measure Q	State Capital Outlay	Prop 39							
1. Classroom Tech Upgrades	\$ 727,047	\$ -	\$ -	\$ 727,047	\$ 497,227	\$ 229,820	\$ 727,047	\$ 256,843	\$ 240,384	\$ 229,820
2. Computer Lab Computer Replacement (CLOSED)	\$ 75,273	\$ -	\$ -	\$ 75,273	\$ 75,273	\$ 0	\$ 75,273	\$ 75,273	\$ -	\$ 0
3. Faculty/Staff/Student Computer Replacement	\$ 383,155	\$ -	\$ -	\$ 383,155	\$ 258,229	\$ 124,926	\$ 383,155	\$ 257,753	\$ 475	\$ 124,926
4. Student Laptop Replacement (CLOSED)	\$ 67,526	\$ -	\$ -	\$ 67,526	\$ 67,526	\$ 0	\$ 67,526	\$ 67,526	\$ -	\$ 0
5. Building 100 Generator (CLOSED)	\$ 490,321	\$ -	\$ -	\$ 490,321	\$ 490,321	\$ -	\$ 490,321	\$ 490,321	\$ -	\$ -
6. Security Camera System Upgrade	\$ 110,937	\$ -	\$ -	\$ 110,937	\$ 10,509	\$ 100,428	\$ 110,937	\$ 10,509	\$ -	\$ 100,428
7. Security Camera Replacement Program	\$ 62,196	\$ -	\$ -	\$ 62,196	\$ 8,496	\$ 53,700	\$ 62,196	\$ 8,496	\$ -	\$ 53,700
8. Annual Network Upgrades	\$ 443,451	\$ -	\$ -	\$ 443,451	\$ 403,784	\$ 39,666	\$ 443,451	\$ 362,838	\$ 40,946	\$ 39,666
9. Printer & Copier Replacement	\$ 95,000	\$ -	\$ -	\$ 95,000	\$ 65,376	\$ 29,624	\$ 95,000	\$ 54,441	\$ 10,935	\$ 29,624
10. Email System Upgrade	\$ 110,691	\$ -	\$ -	\$ 110,691	\$ 110,641	\$ 50	\$ 110,691	\$ 110,641	\$ -	\$ 50
11. Vacaville (Annex) Technology Upgrade	\$ 123,423	\$ -	\$ -	\$ 123,423	\$ 109,181	\$ 14,242	\$ 123,423	\$ 109,181	\$ -	\$ 14,242
11. TOTAL PROJECT COST	\$ 2,689,020	\$ -	\$ -	\$ 2,689,020	\$ 2,096,561	\$ 592,458	\$ 2,689,020	\$ 1,803,822	\$ 292,740	\$ 592,458

OK

Issues and Concerns

1. No issues or concerns at this time.

Next 90 Days

1. Continue network upgrades and computer replacement.



**Solano Community College
Small Capital Projects Phase 2 - Other**

A/E: N/A

Contractor: N/A

Status: Active



PROJECT SUMMARY

Project: Small Capital Projects - Other

Project Scope:
Small Capital Projects is a project consisting of smaller scale classroom improvement projects intended to provide necessary instructional, student support and office space improvements District wide. This summary sheet is to capture expenditures for mini-scale projects with expenditures less than \$50,000 or very close to this dollar amount.

Project Manager: Various	Status: Active
Original Project Budget: \$50,000	Current Project Budget: \$82,125
Project Start: July 2018	Project End: May 2021

Legend	
<input type="checkbox"/>	Not Started
<input type="checkbox"/>	In Progress
<input checked="" type="checkbox"/>	Completed

SCHEDULE

DESCRIPTION	Design			DSA	BID	IN CONST	% Comp.	OCCUPIED	CLOSE-OUT	ON SCHED	COMMENTS
	SD	DD	CD								
Small scale projects less than \$50,000, part of the Small Capital Projects overall scope and budget.	<input type="checkbox"/>	<input type="checkbox"/>	<input type="checkbox"/>	<input type="checkbox"/>	<input type="checkbox"/>	<input type="checkbox"/>	NA	<input type="checkbox"/>	<input type="checkbox"/>	Yes	

OK

Expenditures

FUNDING SOURCE: Measure Q

Projects	Amount Budgeted			Total Budget (A)	Encumbered (B)	Forecast to Complete (C)	Forecast at Completion (B+C)	Expenditures to Date (E)	Encumbrance Balance (B-E=F)	Budget Balance (A-B=G)
	Measure Q	State Capital Outlay	Prop 39							
1. Upgrade HVAC System VV and VJ (Design Phase)	\$ 2,400	\$ -	\$ -	\$ 2,400	\$ 2,400	\$ -	\$ 2,400	\$ 2,400	\$ -	\$ -
2. Autotech Acoustic Study	\$ 54,380	\$ -	\$ -	\$ 54,380	\$ 14,380	\$ -	\$ 14,380	\$ 14,380	\$ -	\$ 40,000
3. Building 1200 Signage	\$ 8,180	\$ -	\$ -	\$ 8,180	\$ 8,180	\$ -	\$ 8,180	\$ 8,180	\$ -	\$ -
4. Portables Low Voltage Revisions	\$ 27,745	\$ -	\$ -	\$ 27,745	\$ 27,745	\$ -	\$ 27,745	\$ 27,745	\$ -	\$ -
5. Building 300 Exterior Signage	\$ 3,037	\$ -	\$ -	\$ 3,037	\$ 3,037	\$ -	\$ 3,037	\$ 3,037	\$ -	\$ -
	\$ -	\$ -	\$ -	\$ -	\$ -	\$ -	\$ -	\$ -	\$ -	\$ -
	\$ -	\$ -	\$ -	\$ -	\$ -	\$ -	\$ -	\$ -	\$ -	\$ -
	\$ -	\$ -	\$ -	\$ -	\$ -	\$ -	\$ -	\$ -	\$ -	\$ -
	\$ -	\$ -	\$ -	\$ -	\$ -	\$ -	\$ -	\$ -	\$ -	\$ -
	\$ -	\$ -	\$ -	\$ -	\$ -	\$ -	\$ -	\$ -	\$ -	\$ -
	\$ -	\$ -	\$ -	\$ -	\$ -	\$ -	\$ -	\$ -	\$ -	\$ -
	\$ -	\$ -	\$ -	\$ -	\$ -	\$ -	\$ -	\$ -	\$ -	\$ -
	\$ -	\$ -	\$ -	\$ -	\$ -	\$ -	\$ -	\$ -	\$ -	\$ -
	\$ -	\$ -	\$ -	\$ -	\$ -	\$ -	\$ -	\$ -	\$ -	\$ -
	\$ -	\$ -	\$ -	\$ -	\$ -	\$ -	\$ -	\$ -	\$ -	\$ -
	\$ -	\$ -	\$ -	\$ -	\$ -	\$ -	\$ -	\$ -	\$ -	\$ -
11. TOTAL PROJECT COST	\$ 95,742	\$ -	\$ -	\$ 95,742	\$ 55,742	\$ -	\$ 55,742	\$ 55,742	\$ -	\$ 40,000

OK

Issues and Concerns

1. No issues or concerns at this time.

Next 90 Days



**Solano Community College
Small Capital Projects - B300 Modifications - Graphics & Mailroom**

A/E: HMR Architects

Contractor: TBD

Status: Active



PROJECT SUMMARY

Project: Small Capital Projects - B300 Modifications - Graphics & Mailroom

Project Scope:

The Mailroom and Graphics Project consists of the renovation of two existing spaces in Building 300. These spaces will be converted into the District's new mailroom and graphics services spaces. The project will include the following components: planning, design and construction.

Project Manager: Noe Ramos **Status:** Design

Original Project Budget: \$250,000 **Current Project Budget:** \$280,000

Project Start: June 2019 **Project End:** June 2020

Legend	
<input type="checkbox"/>	Not Started
<input type="checkbox"/>	In Progress
<input checked="" type="checkbox"/>	Completed

SCHEDULE

DESCRIPTION	Design			DSA	BID	IN CONST	% Comp.	OCCUPIED	CLOSE-OUT	ON SCHED	COMMENTS
	SD	DD	CD								
Design Development Phase	<input checked="" type="checkbox"/>	<input checked="" type="checkbox"/>	<input type="checkbox"/>	<input type="checkbox"/>	<input type="checkbox"/>	<input type="checkbox"/>	65%	<input type="checkbox"/>	<input type="checkbox"/>	Yes	

BUDGET

FUNDING SOURCE: Measure Q

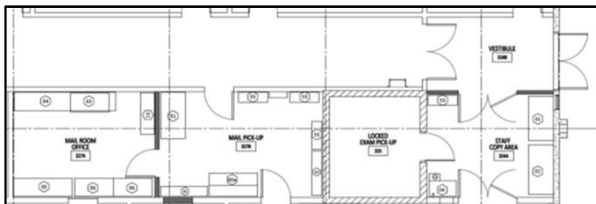
JCAF	Amount Budgeted			Total Budget (A)	Encumbered (B)	Forecast to Complete (C)	Forecast at Completion (B+C)	Expenditures to Date (E)	Encumbrance Balance (B-E=F)	Budget Balance (A-B=G)
	Measure Q	State Capital Outlay	Prop 39							
1. SITE ACQUISITION	\$ -	\$ -	\$ -	\$ -	\$ -	\$ -	\$ -	\$ -	\$ -	\$ -
2. PLANS	\$ -	\$ -	\$ -	\$ -	\$ -	\$ -	\$ -	\$ -	\$ -	\$ -
3. WORKING DRAWINGS	\$ 41,521	\$ -	\$ -	\$ 41,521	\$ 41,521	\$ -	\$ 41,521	\$ 5,000	\$ 36,521	\$ -
4. CONSTRUCTION	\$ 210,000	\$ -	\$ -	\$ 210,000	\$ -	\$ 210,000	\$ 210,000	\$ -	\$ -	\$ 210,000
5. CONTINGENCY	\$ 21,000	\$ -	\$ -	\$ 21,000	\$ -	\$ 21,000	\$ 21,000	\$ -	\$ -	\$ 21,000
6. ARCHITECTURAL AND ENGINEERING OVERSIGHT	\$ -	\$ -	\$ -	\$ -	\$ -	\$ -	\$ -	\$ -	\$ -	\$ -
7. TESTS AND INSPECTIONS	\$ -	\$ -	\$ -	\$ -	\$ -	\$ -	\$ -	\$ -	\$ -	\$ -
8. CONSTRUCTION MANAGEMENT	\$ -	\$ -	\$ -	\$ -	\$ -	\$ -	\$ -	\$ -	\$ -	\$ -
9. TOTAL CONSTRUCTION COSTS (4 THRU 8 ABOVE)	\$ 231,000	\$ -	\$ -	\$ 231,000	\$ -	\$ 231,000	\$ 231,000	\$ -	\$ -	\$ 231,000
10. FURNITURE AND GROUP II EQUIPMENT	\$ 7,479	\$ -	\$ -	\$ 7,479	\$ -	\$ -	\$ -	\$ -	\$ -	\$ 7,479
11. TOTAL PROJECT COST	\$ 280,000	\$ -	\$ -	\$ 280,000	\$ 41,521	\$ 231,000	\$ 272,521	\$ 5,000	\$ 36,521	\$ 238,479

Issues and Concerns

- Project scope has increased and may require DSA review.

Next 90 Days

- Complete Construction Documents.
- Bid project to general contractors.
- Award contract to general contractor.



Proposed Mailroom/ Staff Copy Area



Proposed Graphics Area



**Solano Community College
Small Capital Projects - Bleacher Replacement-Baseball & Soccer**

A/E: Aedis, Inc.

Contractor: TBD

Status: Active



PROJECT SUMMARY

Project: Small Capital Projects - Bleacher Replacement - Baseball & Soccer	
Project Scope: The Bleacher Replacement-Baseball & Soccer Project consists of the complete Division of State Architect (DSA) close-out of the uncertified Athletic Field Renovation Project #02-109982. The project also includes the removal and replacement of the existing bleacher systems at the Baseball and Soccer Fields. These bleachers will be replaced with new DSA approved and ADA compliant bleachers.	Project Manager: Noe Ramos Status: Close-Out / Design
	Original Project Budget: \$750,000 Current Project Budget: \$750,000
	Project Start: June 2019 Project End: December 2020

Legend	
<input type="checkbox"/>	Not Started
<input type="checkbox"/>	In Progress
<input checked="" type="checkbox"/>	Completed

SCHEDULE

DESCRIPTION	Design			DSA	BID	IN CONST	% Comp.	OCCUPIED	CLOSE-OUT	ON SCHED	COMMENTS
	SD	DD	CD								
Close-out of DSA Project #02-109982 Replacement of Baseball and Soccer Bleachers	<input checked="" type="checkbox"/>	<input checked="" type="checkbox"/>	<input checked="" type="checkbox"/>	<input checked="" type="checkbox"/>	<input type="checkbox"/>	<input type="checkbox"/>	40%	<input type="checkbox"/>	<input checked="" type="checkbox"/>	YES	

BUDGET

FUNDING SOURCE: Measure Q

JCAF	Amount Budgeted			Total Budget (A)	Encumbered (B)	Forecast to Complete (C)	Forecast at Completion (B+C)	Expenditures to Date (E)	Encumbrance Balance (B-E=F)	Budget Balance (A-B=G)
	Measure Q	State Capital Outlay	Prop 39							
1. SITE ACQUISITION	\$ -	\$ -	\$ -	\$ -	\$ -	\$ -	\$ -	\$ -	\$ -	\$ -
2. PLANS	\$ -	\$ -	\$ -	\$ -	\$ -	\$ -	\$ -	\$ -	\$ -	\$ -
3. WORKING DRAWINGS	\$ 55,000	\$ -	\$ -	\$ 55,000	\$ 37,225	\$ 17,775	\$ 55,000	\$ -	\$ 37,225	\$ 17,775
4. CONSTRUCTION	\$ 550,000	\$ -	\$ -	\$ 550,000	\$ -	\$ 550,000	\$ 550,000	\$ -	\$ -	\$ 550,000
5. CONTINGENCY	\$ 55,000	\$ -	\$ -	\$ 55,000	\$ -	\$ 55,000	\$ 55,000	\$ -	\$ -	\$ 55,000
6. ARCHITECTURAL AND ENGINEERING OVERSIGHT	\$ -	\$ -	\$ -	\$ -	\$ -	\$ -	\$ -	\$ -	\$ -	\$ -
7. TESTS AND INSPECTIONS	\$ 90,000	\$ -	\$ -	\$ 90,000	\$ -	\$ 90,000	\$ 90,000	\$ -	\$ -	\$ 90,000
8. CONSTRUCTION MANAGEMENT	\$ -	\$ -	\$ -	\$ -	\$ -	\$ -	\$ -	\$ -	\$ -	\$ -
9. TOTAL CONSTRUCTION COSTS (4 THRU 8 ABOVE)	\$ 695,000	\$ -	\$ -	\$ 695,000	\$ -	\$ 695,000	\$ 695,000	\$ -	\$ -	\$ 695,000
10. FURNITURE AND GROUP II EQUIPMENT	\$ -	\$ -	\$ -	\$ -	\$ -	\$ -	\$ -	\$ -	\$ -	\$ -
11. TOTAL PROJECT COST	\$ 750,000	\$ -	\$ -	\$ 750,000	\$ 37,225	\$ 712,775	\$ 750,000	\$ -	\$ 37,225	\$ 712,775

Issues and Concerns

1. No issues or concerns at this time.

Next 90 Days

1. Submit close-out paperwork to DSA for project #02-109982.
2. Begin design for bleacher replacement project at Baseball and Soccer Fields.
3. Submit bleacher project to DSA for review.



Existing Baseball Field Bleachers



Existing Soccer Field Bleachers



**Solano Community College
Planning, Assessments & Program Management**

Program Manager: Kitchell CEM

Contractor: N/A

Status: Active

PROJECT SUMMARY

Project: Planning, Assessments & Program Management

Project Scope:

This Bond Spending Plan budget category includes District-wide Planning, Assessments and Program Management. It is comprised of work associated with overall bond program implementation, including district bond team, program management services, professional services bond (bond counsel, bond performance audit), professional services for bond start-up and District EMP/FMP/Standards/Studies.

Program Manager: Priscilla Meckley	Status: Active
Original Project Budget: \$25,400,000	Current Project Budget: \$25,400,000
Project Start: July 2013	Project End: December 2036

Legend	
<input type="checkbox"/>	Not Started
<input type="checkbox"/>	In Progress
<input checked="" type="checkbox"/>	Completed

SCHEDULE

DESCRIPTION	Design			DSA	BID	IN CONST	% Comp.	OCCUPIED	CLOSE-OUT	ON SCHED	COMMENTS
	SD	DD	CD								
This project sheet includes budget and expenditure information for the duration of the bond program. Only Tranche 1 & 2 duration of 2013 - 2020 is active.	<input type="checkbox"/>	<input type="checkbox"/>	<input type="checkbox"/>	<input type="checkbox"/>	<input type="checkbox"/>	<input type="checkbox"/>	NA	<input type="checkbox"/>	<input type="checkbox"/>	Yes	

OK

Expenditures

FUNDING SOURCE: Measure Q

Categories	Amount Budgeted			Total Budget (A)	Encumbered (B)	Forecast to Complete (C)	Forecast at Completion (B+C)	Expenditures to Date (E)	Encumbrance Balance (B-E=F)	Budget Balance (A-B=G)
	Measure Q	State Capital Outlay	Prop 39							
1. Program Management Consultants	\$ 10,251,711	\$ -	\$ -	\$ 10,251,711	\$ 9,974,333	\$ 277,378	\$ 10,251,711	\$ 8,954,601	\$ 1,019,732	\$ 277,378
2. Program Management District Staff	\$ 9,285,960	\$ -	\$ -	\$ 9,285,960	\$ 2,778,470	\$ 6,507,490	\$ 9,285,960	\$ 2,778,470	\$ -	\$ 6,507,490
3. Professional Services Bond	\$ 1,892,012	\$ -	\$ -	\$ 1,892,012	\$ 1,216,637	\$ 675,375	\$ 1,892,012	\$ 1,140,232	\$ 76,405	\$ 675,375
4. Professional Services Bond Start-up (Series A)	\$ 919,350	\$ -	\$ -	\$ 919,350	\$ 919,350	\$ 0	\$ 919,350	\$ 919,350	\$ -	\$ 0
5. Professional Services Bond Start-up (Series B)	\$ 306,954	\$ -	\$ -	\$ 306,954	\$ 306,954	\$ 0	\$ 306,954	\$ 306,954	\$ -	\$ 0
6. Professional Services Bond Start-up (Series C)	\$ 919,517	\$ -	\$ -	\$ 919,517	\$ 258,237	\$ 661,280	\$ 919,517	\$ 258,237	\$ -	\$ 661,280
7. EMP/FMP/District Standards Bond	\$ 1,824,496	\$ -	\$ -	\$ 1,824,496	\$ 1,432,502	\$ 391,994	\$ 1,824,496	\$ 1,432,501	\$ 1	\$ 391,994
	\$ -	\$ -	\$ -	\$ -	\$ -	\$ -	\$ -	\$ -	\$ -	\$ -
	\$ -	\$ -	\$ -	\$ -	\$ -	\$ -	\$ -	\$ -	\$ -	\$ -
	\$ -	\$ -	\$ -	\$ -	\$ -	\$ -	\$ -	\$ -	\$ -	\$ -
11. TOTAL PROJECT COST	\$ 25,400,000	\$ -	\$ -	\$ 25,400,000	\$ 16,886,483	\$ 8,513,517	\$ 25,400,000	\$ 15,790,345	\$ 1,096,138	\$ 8,513,517

OK

Issues and Concerns

1. No issues or concerns at this time.

Next 90 Days

1. On-going activities of the District bond team, program management team, and consultants to support the Bond program and its projects.

PROJECTS IN CLOSE-OUT



SOLANO
COMMUNITY COLLEGE



Solano Community College Science Building (Phase I)

A/E: Lionakis (Criteria Architect) Design Builder: DPR Construction & HGA Architects Status: Close-Out

PROJECT SUMMARY

Project: Science Building (Phase I)

Project Scope:
New Science Building to provide science labs, classroom instructional space, and student support spaces including a Veterans Center. The project will include the following components: planning, assessments, surveys, design and construction of the building and associated site work; furniture, fixtures and equipment and project/construction management.

Project Manager: Jason Yi **Status:** Close-Out
Construction Manager: Cary Talbott

Original Project Budget: \$33,100,000 **Current Project Budget:** \$35,100,000

Project Start: September 2016 **Project End:** April 2019

Legend	
<input type="checkbox"/>	Not Started
<input type="checkbox"/>	In Progress
<input checked="" type="checkbox"/>	Completed

SCHEDULE

DESCRIPTION	Design			DSA	BID	IN CONST	% Comp.	OCCUPIED	CLOSE-OUT	ON SCHED	COMMENTS
	SD	DD	CD								
Construction Complete	<input checked="" type="checkbox"/>	<input checked="" type="checkbox"/>	<input checked="" type="checkbox"/>	<input checked="" type="checkbox"/>	<input checked="" type="checkbox"/>	<input checked="" type="checkbox"/>	100%	<input checked="" type="checkbox"/>	<input type="checkbox"/>	yes	Building complete and occupied

CAUTION

BUDGET

FUNDING SOURCE: Measure Q

JCAF	Amount Budgeted			Total Budget (A)	Encumbered (B)	Forecast to Complete (C)	Forecast at Completion (B+C)	Expenditures to Date (E)	Encumbrance Balance (B-E=F)	Budget Balance (A-B=G)
	Measure Q	State Capital Outlay	Prop 39							
1. SITE ACQUISITION	\$ -	\$ -	\$ -	\$ -	\$ -	\$ -	\$ -	\$ -	\$ -	\$ -
2. PLANS	\$ 752,539	\$ -	\$ -	\$ 752,539	\$ 752,539	\$ -	\$ 752,539	\$ 739,307	\$ 13,232	\$ -
3. WORKING DRAWINGS	\$ 131,323	\$ -	\$ -	\$ 131,323	\$ 131,323	\$ -	\$ 131,323	\$ 131,323	\$ -	\$ -
4. CONSTRUCTION	\$ 30,141,136	\$ -	\$ -	\$ 30,141,136	\$ 30,141,136	\$ -	\$ 30,141,136	\$ 30,117,425	\$ 23,711	\$ -
5. CONTINGENCY	\$ 58,745	\$ -	\$ -	\$ 58,745	\$ -	\$ 58,745	\$ 58,745	\$ -	\$ -	\$ 58,745
6. ARCHITECTURAL AND ENGINEERING OVERSIGHT	\$ 365,880	\$ -	\$ -	\$ 365,880	\$ 311,162	\$ 54,718	\$ 365,880	\$ 308,062	\$ 3,100	\$ 54,718
7. TESTS AND INSPECTIONS	\$ 351,477	\$ -	\$ -	\$ 351,477	\$ 351,477	\$ -	\$ 351,477	\$ 351,477	\$ -	\$ -
8. CONSTRUCTION MANAGEMENT	\$ 1,209,553	\$ -	\$ -	\$ 1,209,553	\$ 1,209,553	\$ -	\$ 1,209,553	\$ 1,203,553	\$ 6,000	\$ -
9. TOTAL CONSTRUCTION COSTS (4 THRU 8 ABOVE)	\$ 32,126,791	\$ -	\$ -	\$ 32,126,791	\$ 32,013,328	\$ 113,463	\$ 32,126,791	\$ 31,980,517	\$ 32,811	\$ 113,463
10. FURNITURE AND GROUP II EQUIPMENT	\$ 2,089,348	\$ -	\$ -	\$ 2,089,348	\$ 2,089,348	\$ -	\$ 2,089,348	\$ 1,989,743	\$ 99,605	\$ -
11. TOTAL PROJECT COST	\$ 35,100,000	\$ -	\$ -	\$ 35,100,000	\$ 34,986,537	\$ 113,463	\$ 35,100,000	\$ 34,840,890	\$ 145,647	\$ 113,463

OK

Issues and Concerns

1. No issues or concerns at this time.

Next 90 Days

1. Project close-out.
2. In warranty period.





Solano Community College Horticulture Phase 1 (DSA Close-Out)

A/E: MADI Architecture

Contractor: Pro Builders

Status: Close-Out



PROJECT SUMMARY

Project: Agriculture (Horticulture)

Project Scope:

This first phase project includes tree removal, utility infrastructure, access road, gravel paths, and farmers market stand.

Project Manager: Jason Yi **Status:** Close-Out

Original Project Budget: \$1,000,000 **Current Project Budget:** \$948,806

Project Start: March 2015 **Project End:** May 2018

Legend	
<input type="checkbox"/>	Not Started
<input type="checkbox"/>	In Progress
<input checked="" type="checkbox"/>	Completed

SCHEDULE

DESCRIPTION	Design			DSA	BID	IN CONST	% Comp.	OCCUPIED	CLOSE-OUT	ON SCHED	COMMENTS
	SD	DD	CD								
Close-Out Phase	■	■	■	■	■	■	99%	■	■	No	Cannot close project with DSA until Phase 2 restroom building is completed.

OK

BUDGET

FUNDING SOURCE: Measure Q

JCAF	Amount Budgeted			Total Budget (A)	Encumbered (B)	Forecast to Complete (C)	Forecast at Completion (B+C)	Expenditures to Date (E)	Encumbrance Balance (B-E=F)	Budget Balance (A-B=G)
	Measure Q	State Capital Outlay	Prop 39							
1. SITE ACQUISITION	\$ -	\$ -	\$ -	\$ -	\$ -	\$ -	\$ -	\$ -	\$ -	\$ -
2. PLANS	\$ 59,883	\$ -	\$ -	\$ 59,883	\$ 59,883	\$ -	\$ 59,883	\$ 59,883	\$ -	\$ -
3. WORKING DRAWINGS	\$ 57,450	\$ -	\$ -	\$ 57,450	\$ 57,450	\$ -	\$ 57,450	\$ 57,450	\$ -	\$ -
4. CONSTRUCTION	\$ 807,202	\$ -	\$ -	\$ 807,202	\$ 807,202	\$ -	\$ 807,202	\$ 807,202	\$ -	\$ -
5. CONTINGENCY	\$ -	\$ -	\$ -	\$ -	\$ -	\$ -	\$ -	\$ -	\$ -	\$ -
6. ARCHITECTURAL AND ENGINEERING OVERSIGHT	\$ 6,230	\$ -	\$ -	\$ 6,230	\$ 6,230	\$ -	\$ 6,230	\$ 6,230	\$ -	\$ -
7. TESTS AND INSPECTIONS	\$ 18,041	\$ -	\$ -	\$ 18,041	\$ 18,041	\$ -	\$ 18,041	\$ 18,041	\$ -	\$ -
8. CONSTRUCTION MANAGEMENT	\$ -	\$ -	\$ -	\$ -	\$ -	\$ -	\$ -	\$ -	\$ -	\$ -
9. TOTAL CONSTRUCTION COSTS (4 THRU 8 ABOVE)	\$ 831,473	\$ -	\$ -	\$ 831,473	\$ 831,473	\$ -	\$ 831,473	\$ 831,473	\$ -	\$ -
10. FURNITURE AND GROUP II EQUIPMENT	\$ -	\$ -	\$ -	\$ -	\$ -	\$ -	\$ -	\$ -	\$ -	\$ -
11. TOTAL PROJECT COST	\$ 948,805	\$ -	\$ -	\$ 948,805	\$ 948,805	\$ -	\$ 948,805	\$ 948,805	\$ -	\$ -

OK

Issues and Concerns

1. No issues or concerns at this time.

Next 90 Days

1. Primary construction has been completed and contract closed.
2. Close-out Phase 1 project, once Phase 2 restroom building has been completed, as required by DSA.



Ribbon Cutting Ceremony



Farmers Market Stand and Cabinets



Solano Community College Horticulture Phase 2 - Modular Restroom

A/E: MADI Architecture Contractors: Impact Construction; HM Construction Status: Close-out

SOLANO
COMMUNITY COLLEGE



PROJECT SUMMARY

Project: Horticulture Phase 2 - Modular Restroom				
Project Scope: Fabrication, construction and installation of a DSA approved modular restroom building for the Horticulture program planting areas on the Fairfield Campus	Project Manager:	Jason Yi	Status:	Close-Out
	Original Project Budget:	\$342,000	Current Project Budget:	\$422,194
	Project Start:	August 2017	Project End:	August 2019

Legend
<input type="checkbox"/> Not Started
<input type="checkbox"/> In Progress
<input checked="" type="checkbox"/> Completed

SCHEDULE

DESCRIPTION	Design			DSA	BID	IN CONST	% Comp.	OCCUPIED	CLOSE-OUT	ON SCHED	COMMENTS
	SD	DD	CD								
Construction complete	■	■	■	■	■	■	100%	□	■	No	

CAUTION

BUDGET

FUNDING SOURCE: Measure Q

JCAF	Amount Budgeted			Total Budget (A)	Encumbered (B)	Forecast to Complete (C)	Forecast at Completion (B+C)	Expenditures to Date (E)	Encumbrance Balance (B-E=F)	Budget Balance (A-B=G)
	Measure Q	State Capital Outlay	Prop 39							
1. SITE ACQUISITION	\$ -	\$ -	\$ -	\$ -	\$ -	\$ -	\$ -	\$ -	\$ -	\$ -
2. PLANS	\$ -	\$ -	\$ -	\$ -	\$ -	\$ -	\$ -	\$ -	\$ -	\$ -
3. WORKING DRAWINGS	\$ 14,698	\$ -	\$ -	\$ 14,698	\$ 8,863	\$ 5,835	\$ 14,698	\$ 8,863	\$ -	\$ 5,835
4. CONSTRUCTION	\$ 365,284	\$ -	\$ -	\$ 365,284	\$ 344,524	\$ 20,760	\$ 365,284	\$ 344,524	\$ -	\$ 20,760
5. CONTINGENCY	\$ 9,292	\$ -	\$ -	\$ 9,292	\$ -	\$ 9,292	\$ 9,292	\$ -	\$ -	\$ 9,292
6. ARCHITECTURAL AND ENGINEERING OVERSIGHT	\$ 13,910	\$ -	\$ -	\$ 13,910	\$ 13,910	\$ -	\$ 13,910	\$ -	\$ 13,910	\$ -
7. TESTS AND INSPECTIONS	\$ 19,010	\$ -	\$ -	\$ 19,010	\$ 9,471	\$ 9,539	\$ 19,010	\$ 9,471	\$ -	\$ 9,539
8. CONSTRUCTION MANAGEMENT	\$ -	\$ -	\$ -	\$ -	\$ -	\$ -	\$ -	\$ -	\$ -	\$ -
9. TOTAL CONSTRUCTION COSTS (4 THRU 8 ABOVE)	\$ 407,496	\$ -	\$ -	\$ 407,496	\$ 367,905	\$ 39,591	\$ 407,496	\$ 353,995	\$ 13,910	\$ 39,591
10. FURNITURE AND GROUP II EQUIPMENT	\$ -	\$ -	\$ -	\$ -	\$ -	\$ -	\$ -	\$ -	\$ -	\$ -
11. TOTAL PROJECT COST	\$ 422,194	\$ -	\$ -	\$ 422,194	\$ 376,769	\$ 45,425	\$ 422,194	\$ 362,859	\$ 13,910	\$ 45,425

OK

Issues and Concerns

1. No issues or concerns at this time.

Next 90 Days

1. Close-out project with DSA.



Completed Fire Alarm System Installation



Modular Restroom Building and Surrounding Hardscape



**Solano Community College
Vacaville Center Intersection Improvements**

A/E: Omni-Means Contractor: Vaca Valley Excavation Status: Close-Out

PROJECT SUMMARY

Project: Vacaville Center Intersection Improvements

Project Scope: Install a traffic signal and construct associated roadway and on-site improvements at the N. Village Parkway/Vacaville Campus Main Entrance located in the City of Vacaville. This project is a required CEQA mitigation for the Biotechnology and Science Building Project.	Construction Manager: Michael Stroud Status: Close-Out
	Original Project Budget: \$968,270 Current Project Budget: \$1,127,198
	Project Start: June 2016 Project End: April 2019

Legend	
<input type="checkbox"/>	Not Started
<input type="checkbox"/>	In Progress
<input checked="" type="checkbox"/>	Completed

SCHEDULE

DESCRIPTION	Design			DSA	BID	IN CONST	% Comp.	OCCUPIED	CLOSE-OUT	ON SCHED	COMMENTS
	SD	DD	CD								
Close-Out Phase	■	■	■	N/A	■	■	100%	■	■	No	

CAUTION

BUDGET

FUNDING SOURCE: Measure Q

JCAF	Amount Budgeted			Total Budget (A)	Encumbered (B)	Forecast to Complete (C)	Forecast at Completion (B+C)	Expenditures to Date (E)	Encumbrance Balance (B-E=F)	Budget Balance (A-B=G)
	Measure Q	State Capital Outlay	Prop 39							
1. SITE ACQUISITION	\$ -	\$ -	\$ -	\$ -	\$ -	\$ -	\$ -	\$ -	\$ -	\$ -
2. PLANS	\$ 15,803	\$ -	\$ -	\$ 15,803	\$ 15,803	\$ -	\$ 15,803	\$ 15,803	\$ -	\$ -
3. WORKING DRAWINGS	\$ 86,250	\$ -	\$ -	\$ 86,250	\$ 83,750	\$ 2,500	\$ 86,250	\$ 83,750	\$ -	\$ 2,500
4. CONSTRUCTION	\$ 956,487	\$ -	\$ -	\$ 956,487	\$ 956,487	\$ -	\$ 956,487	\$ 956,487	\$ -	\$ -
5. CONTINGENCY	\$ -	\$ -	\$ -	\$ -	\$ -	\$ -	\$ -	\$ -	\$ -	\$ -
6. ARCHITECTURAL AND ENGINEERING OVERSIGHT	\$ 22,171	\$ -	\$ -	\$ 22,171	\$ 20,280	\$ 1,891	\$ 22,171	\$ 20,280	\$ -	\$ 1,891
7. TESTS AND INSPECTIONS	\$ 8,237	\$ -	\$ -	\$ 8,237	\$ 8,237	\$ -	\$ 8,237	\$ 8,237	\$ -	\$ -
8. CONSTRUCTION MANAGEMENT	\$ 38,250	\$ -	\$ -	\$ 38,250	\$ 38,250	\$ -	\$ 38,250	\$ 32,674	\$ 5,577	\$ -
9. TOTAL CONSTRUCTION COSTS (4 THRU 8 ABOVE)	\$ 1,025,145	\$ -	\$ -	\$ 1,025,145	\$ 1,023,254	\$ 1,891	\$ 1,025,145	\$ 1,017,677	\$ 5,577	\$ 1,891
10. FURNITURE AND GROUP II EQUIPMENT	\$ -	\$ -	\$ -	\$ -	\$ -	\$ -	\$ -	\$ -	\$ -	\$ -
11. TOTAL PROJECT COST	\$ 1,127,198	\$ -	\$ -	\$ 1,127,198	\$ 1,122,807	\$ 4,391	\$ 1,127,198	\$ 1,117,231	\$ 5,577	\$ 4,391

OK

Issues and Concerns

1. No issues or concerns at this time.

Next 90 Days

1. Complete financial close-out.



New Signal Lights at Vacaville Center and Annex Driveways



New Signal Lights Controller Cabinet

CLOSED PROJECTS



**MEASURE Q BOND
CLOSED PROJECTS**

PROJECT NAME	FINAL COST⁽¹⁾	QUARTER CLOSED
FF CAMPUS		
Performing Arts Building (Phase 1 B1200 Renovation):		
Performing Arts Costume Workshop	\$95,386	9/30/2017
Performing Arts Swing Space	\$1,137,703	3/31/2018
Performing Arts Building (Phase 1, B1200 Renovation)	\$18,976,510	12/31/2018
VV CAMPUS		
VV Classroom Building Purchase & Renovation:		
Vacaville Classroom Building Purchase	\$2,492,118	9/30/2015
Vacaville Classroom Building Renovation (Phase 1)	\$1,100,200	6/30/2017
Biotechnology & Science Building:		
Biotechnology & Science Swing Space	\$31,730	6/30/2016
Biotechnology & Science Building ⁽²⁾	\$32,161,129	9/30/2019
Vacaville Center HVAC Upgrade ⁽²⁾	\$2,150,306	9/30/2019
VJ CAMPUS		
Vallejo Property Purchase Belvedere	\$4,794,343	9/30/2015
Vallejo Property Purchase Northgate	\$6,871,471	6/30/2015
Autotechnology Building:		
Autotechnology Building	\$22,454,303	6/30/2018
Autotechnology Swing Space	\$1,281,659	3/31/2018
Vallejo Center HVAC Upgrade	\$2,135,178	9/30/2018
INFRASTRUCTURE IMPROVEMENTS		
IT Infrastructure Improvements:		
IT Infrastructure Improvements (Phase 1)	\$4,010,980	6/30/2017
IT Infrastructure Improvements (Phase 2) – B100 Generator Project	\$490,321	9/30/2018
Utility Infrastructure Upgrade (Energy):		
Utility Infrastructure Upgrade (Energy) – ESCO Lighting	\$628,994	3/31/2015
Utility Infrastructure Upgrade (Energy) – ESCO Mechanical	\$5,857,375	3/31/2016
Utility Infrastructure Upgrade – Site Lighting Improvements	\$150,321	12/31/2016
Utility Infrastructure Upgrade – Fairfield Substation #1 & #2 Replacement	\$2,088,015	12/31/2018
Utility Infrastructure Upgrade – Solar Volatic	\$16,659,074	12/31/2018
ADA & CLASSROOM IMPROVEMENTS		
Small Capital Projects:		
Building 100 Adjunct Center	\$77,334	3/31/2015
Building 100 Staff Lounge	\$33,165	3/31/2015
HVAC Systems	\$115,372	3/31/2015

PROJECT NAME	FINAL COST⁽¹⁾	QUARTER CLOSED
Building 1400 FF&E	\$35,450	12/31/2018
Vacaville FF&E/Shelving Design & Installation	\$6,930	12/31/2018
Baseball Field	\$5,303	12/31/2018
Vacaville and Vallejo Center Signage	\$11,480	12/31/2018
Child Development FF&E	\$1,988	12/31/2018
Building 100 Data Center	\$5,000	12/31/2018
21st Century Classroom (Phase 1)	\$141,059	6/30/2016
Middle College High School	\$196,184	12/31/2016
Building 1600 Classroom Improvement	\$38,189	3/31/2016
Building 1800 Classroom Improvement	\$32,670	6/30/2016
Building 300 Feasibility Study	\$23,445	12/31/2018
Building 1600 Re-Roofing	\$205,007	9/30/2016
CDFS Building Window Shades & Building 200 Kitchen Renovation	\$209,067	12/31/2016
Building 1300 Kiln Fence	\$44,408	9/30/2016
Building 100 Academic Success and Tutoring Expansion	\$204,568	3/31/2017
21st Century Classroom (Phase 2)	\$139,937	12/31/2016
Building 1800 Mechatronics Presentation Walls	\$51,947	12/31/2018
Building 1400 Food Service Area Assessment	\$18,800	12/31/2018
Hydronic Pumps Replacement	\$96,731	9/30/2016
FF&E Replacement (Phase 1)	\$348,466	9/30/2018
Asbestos Abatement (B100, B1900)	\$26,980	12/31/2018
Site Lighting Improvements (FF) (Alternate)	\$35,350	12/31/2018
Building 100 Lobby Tables, Electrical and Lighting	\$19,300	12/31/2018
FF Campus Entry Sidewalk Improvements - Phase 1	\$36,358	12/31/2018
Hydronic Pump Insulation	\$11,975	12/31/2018
Glides for New Classroom Furniture	\$4,780	12/31/2018
Swing Space Portables	\$6,707	12/31/2018
Fire Alarm Panel Connectors	\$5,554	12/31/2018
B100 Lobby Tables	\$7,866	12/31/2018
Fairfield Campus Directories	\$65,453	12/31/2018
Bench for Fairfield Campus Entry	\$1,915	12/31/2018
Softball Bleachers Replacement Project	\$490,172	6/30/2018
B1800 Exiting Corridor	\$160,167	12/31/2018
B1800 Makers Space & Robotics Lab Renovation	\$433,666	12/31/2018
Building 1200 Signage	\$8,180	12/31/2018
Vacaville & Vallejo Centers HVAC Upgrade Design	\$102,066	3/31/2019
B600 Room 604 Renovation	\$106,340	6/30/2019
ADA Improvements:		
Fairfield Campus Entry Sidewalk Improvements (ADA Improvements)	\$438,082	12/31/2018
⁽¹⁾ Final cost included other funding sources.		
⁽²⁾ Final Project Sheet included with this Quarterly Report.		



Solano Community College Biotechnology and Science Building

A/E: The Smith Group

Contractor: Rudolph & Sletten

Status: Complete

PROJECT SUMMARY

Project: Biotechnology & Science Building

Project Scope:

New Biotechnology Building to provide biotechnology and science instructional and student support spaces. The project will include the following components: planning, assessments, surveys, design and construction of the building and associated site work; furniture, fixtures and equipment, project/construction management; and swing space classroom spaces at the existing Vacaville Center.

Project Manager: Jason Yi **Status:** Complete

Construction Manager: Cary Talbott

Original Project Budget: \$27,800,000 **Current Project Budget:** \$32,224,506

Project Start: November 2014 **Project End:** December 2017

Legend	
<input type="checkbox"/>	Not Started
<input type="checkbox"/>	In Progress
<input checked="" type="checkbox"/>	Completed

SCHEDULE

DESCRIPTION	Design			DSA	BID	IN CONST	% Comp.	OCCUPIED	CLOSE-OUT	ON SCHED	COMMENTS
	SD	DD	CD								
	■	■	■	■	■	■	100%	■	■	Yes	

OK

BUDGET

FUNDING SOURCE: Measure Q

JCAF	Amount Budgeted			Total Budget (A)	Encumbered (B)	Forecast to Complete (C)	Forecast at Completion (B+C)	Expenditures to Date (E)	Encumbrance Balance (B-E=F)	Budget Balance (A-B=G)
	Measure Q	State Capital Outlay	Prop 39							
1. SITE ACQUISITION	\$ -	\$ -	\$ -	\$ -	\$ -	\$ -	\$ -	\$ -	\$ -	\$ -
2. PLANS	\$ 513,472	\$ -	\$ -	\$ 513,472	\$ 513,472	\$ -	\$ 513,472	\$ 513,472	\$ -	\$ -
3. WORKING DRAWINGS	\$ 949,164	\$ -	\$ -	\$ 949,164	\$ 949,164	\$ -	\$ 949,164	\$ 949,164	\$ -	\$ -
4. CONSTRUCTION	\$ 26,259,598	\$ -	\$ -	\$ 26,259,598	\$ 26,259,598	\$ -	\$ 26,259,598	\$ 26,259,598	\$ -	\$ -
5. CONTINGENCY	\$ 29,552	\$ -	\$ -	\$ 29,552	\$ -	\$ -	\$ -	\$ -	\$ -	\$ 29,552
6. ARCHITECTURAL AND ENGINEERING OVERSIGHT	\$ 161,244	\$ -	\$ -	\$ 161,244	\$ 153,854	\$ -	\$ 153,854	\$ 153,854	\$ -	\$ 7,390
7. TESTS AND INSPECTIONS	\$ 315,520	\$ -	\$ -	\$ 315,520	\$ 315,520	\$ -	\$ 315,520	\$ 315,520	\$ -	\$ -
8. CONSTRUCTION MANAGEMENT	\$ 1,274,056	\$ -	\$ -	\$ 1,274,056	\$ 1,274,056	\$ -	\$ 1,274,056	\$ 1,274,056	\$ -	\$ -
9. TOTAL CONSTRUCTION COSTS (4 THRU 8 ABOVE)	\$ 28,039,970	\$ -	\$ -	\$ 28,039,970	\$ 28,003,028	\$ -	\$ 28,003,028	\$ 28,003,028	\$ -	\$ 36,942
10. FURNITURE AND GROUP II EQUIPMENT	\$ 2,721,900	\$ -	\$ -	\$ 2,721,900	\$ 2,695,464	\$ -	\$ 2,695,464	\$ 2,695,464	\$ -	\$ 26,436
11. TOTAL PROJECT COST	\$ 32,224,506	\$ -	\$ -	\$ 32,224,506	\$ 32,161,129	\$ -	\$ 32,161,129	\$ 32,161,129	\$ -	\$ 63,378

OK

Issues and Concerns

1. No issues or concerns at this time.

Next 90 Days

1. Project complete.



Biotechnology and Science Entrance



Chemistry Class



Solano Community College Vacaville Center HVAC Upgrade Project

A/E: EDesignC Inc.

Contractor: Bel Air Construction

Status: Complete



PROJECT SUMMARY

Project: Vacaville Center HVAC Upgrade

Project Scope:
This project will include replacement of air conditioning units, installation of rooftop condensing units, new hydronic heating system, and rezoning of existing ductwork, replacement of controls, and removal and replacement of suspended ceiling system.

Project Manager: Lucky Lofton
Construction Manager: Bob Collins **Status:** Complete
Original Project Budget: \$1,500,000 **Current Project Budget:** \$2,150,306
Project Start: December 2017 **Project End:** September 2018

Legend	
<input type="checkbox"/>	Not Started
<input type="checkbox"/>	In Progress
<input checked="" type="checkbox"/>	Completed

SCHEDULE

DESCRIPTION	Design			DSA	BID	IN CONST	% Comp.	OCCUPIED	CLOSE-OUT	ON SCHED	COMMENTS	OK
	SD	DD	CD									
Close Out Phase	<input checked="" type="checkbox"/>	<input checked="" type="checkbox"/>	<input checked="" type="checkbox"/>	<input checked="" type="checkbox"/>	<input checked="" type="checkbox"/>	<input checked="" type="checkbox"/>	100%	<input checked="" type="checkbox"/>	<input checked="" type="checkbox"/>	Yes		

BUDGET

FUNDING SOURCE: Measure Q

JCAF	Amount Budgeted			Total Budget (A)	Encumbered (B)	Forecast to Complete (C)	Forecast at Completion (B+C)	Expenditures to Date (E)	Encumbrance Balance (B-E=F)	Budget Balance (A-B=G)	OK
	Measure Q	State Capital Outlay	Prop 39								
1. SITE ACQUISITION	\$ -	\$ -	\$ -	\$ -	\$ -	\$ -	\$ -	\$ -	\$ -	\$ -	
2. PLANS	\$ 649	\$ -	\$ -	\$ 649	\$ 649	\$ -	\$ 649	\$ 649	\$ -	\$ -	
3. WORKING DRAWINGS	\$ 15,308	\$ -	\$ -	\$ 15,308	\$ 15,308	\$ -	\$ 15,308	\$ 15,308	\$ -	\$ -	
4. CONSTRUCTION	\$ 2,022,490	\$ -	\$ -	\$ 2,022,490	\$ 2,022,490	\$ -	\$ 2,022,490	\$ 2,022,490	\$ -	\$ -	
5. CONTINGENCY	\$ -	\$ -	\$ -	\$ -	\$ -	\$ -	\$ -	\$ -	\$ -	\$ -	
6. ARCHITECTURAL AND ENGINEERING OVERSIGHT	\$ 25,910	\$ -	\$ -	\$ 25,910	\$ 25,910	\$ -	\$ 25,910	\$ 25,910	\$ -	\$ -	
7. TESTS AND INSPECTIONS	\$ 18,190	\$ -	\$ -	\$ 18,190	\$ 18,190	\$ -	\$ 18,190	\$ 18,190	\$ -	\$ -	
8. CONSTRUCTION MANAGEMENT	\$ 67,760	\$ -	\$ -	\$ 67,760	\$ 67,760	\$ -	\$ 67,760	\$ 67,760	\$ -	\$ -	
9. TOTAL CONSTRUCTION COSTS (4 THRU 8 ABOVE)	\$ 2,134,350	\$ -	\$ -	\$ 2,134,350	\$ 2,134,350	\$ -	\$ 2,134,350	\$ 2,134,350	\$ -	\$ -	
10. FURNITURE AND GROUP II EQUIPMENT	\$ -	\$ -	\$ -	\$ -	\$ -	\$ -	\$ -	\$ -	\$ -	\$ -	
11. TOTAL PROJECT COST	\$ 2,150,306	\$ -	\$ -	\$ 2,150,306	\$ 2,150,306	\$ -	\$ 2,150,306	\$ 2,150,306	\$ -	\$ -	

Issues and Concerns

1. No issues or concerns at this time.

Next 90 Days

1. Project complete.



Completed Passageway



Completed Entrance



New HVAC Electrical Panel

